



Standard Operating Procedure

Revised Paddock Setup

1. Purpose

Grand River Agricultural Society (GRAS) has identified increased risks for our Racing Paddock at Grand River Raceway (GRR) as it relates to COVID-19 and precautions it needs to take to ensure the safety of our employees, stakeholders, horses and to reduce the risk a COVID-19 virus outbreak in the Racing Paddock. GRAS must implement measures to protect racing operations and the livelihood for key stakeholders. This document outlines revised Paddock setup procedures including enhancements related to COVID-19 precautions.

2. Scope

The protocols and procedures herein, will apply to the operation of the Paddock at GRR.

3. Procedures, Guidelines and Directives

Race Paddock Setup

All stabling for horses at GRR is within the race paddock. The paddock, which is 120' x 280' contains;

- i) 100 standing stalls, of which 1 is used as a urine stall.
- ii) 16 box stalls of which 1 is used by the blacksmith and 4 are used as urine stalls.
- iii) test area including 6 box stalls and 2 wash stalls, outdoor walk area, and an office.
- iv) tack shop, washrooms, drivers' rooms, paddock judges office, TCO₂ test office, and storage.

GRR is currently under renovation, which includes an expansion of the race paddock. While scheduled to be completed well in advance of the race season, due to COVID-19 the project is not finished. Included is a 40' x 120' extension to the west end of the barn, where the horses enter, diagram is attached. The expansion area will include a workshop and an open area which can accommodate up to 12 box stalls.

GRR averages 80 horses per night for a 10 race card, with a maximum possibility of 90 horses. There will be 10 to 20 empty stalls per card to allow for some spacing. Stalls are 7' wide. A stall will not be used more than once for any card. In past years, races were set in order within the paddock. To allow for proper spacing races will now be positioned



within the paddock such that races will be isolated from each. Diagram of race order within the paddock is attached.

EIPH

The EIPH program will be suspended at GRR while paddock restrictions are in place. Horses in the program receive lasix 4 hours before scheduled post time. GRR would average 15 horses per night that are enrolled in the EIPH program. The box stalls for horses to be kept after lasix administration are within the race paddock. With planned restrictions, GRR cannot accommodate EIPH horses for 4 hours before schedule post time.

Post Time Schedule

GRAND RIVER RACEWAY

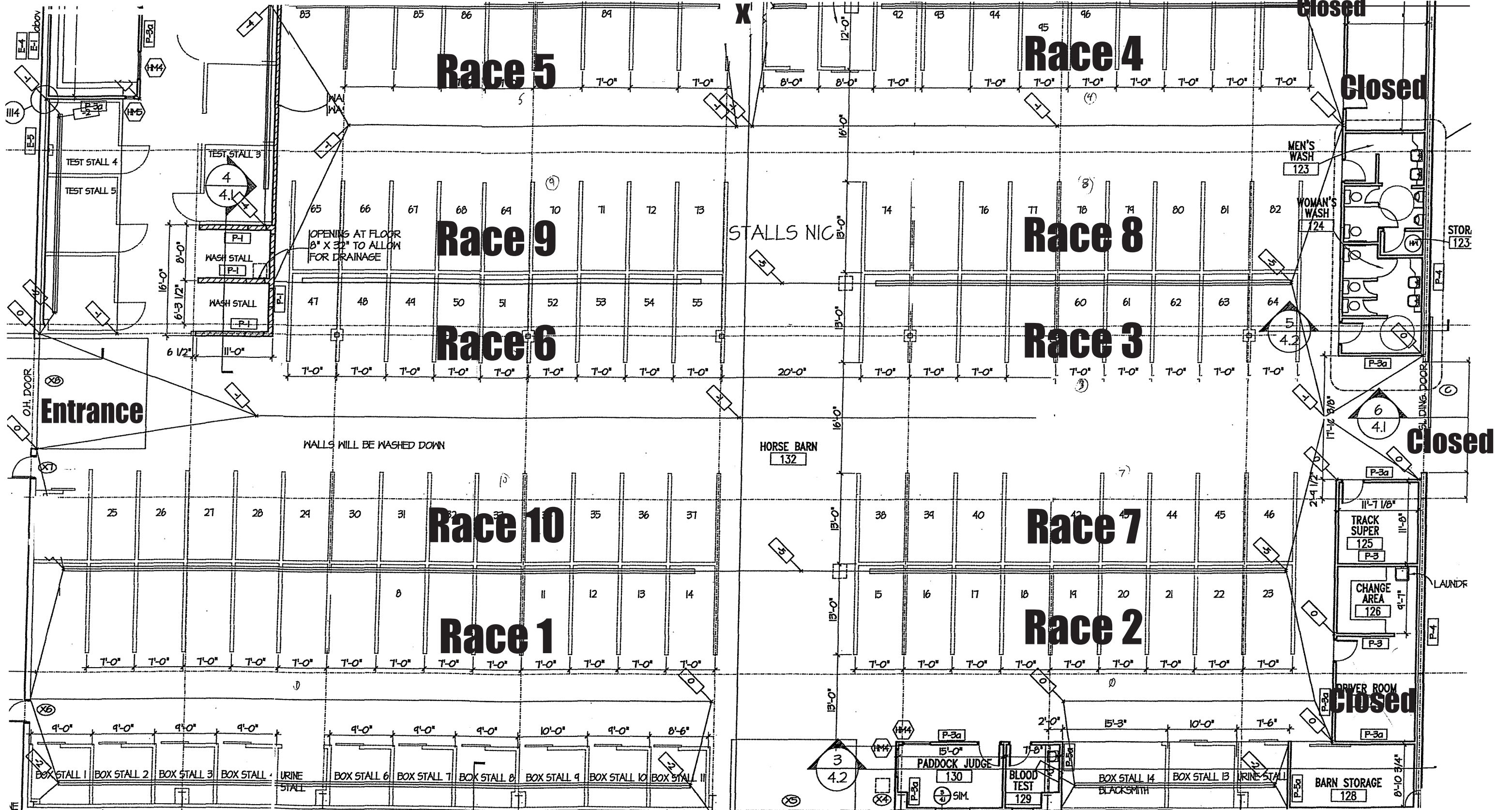
RACE	Arrive	POST TIME	DRAG	OFF TIME	OFFICIAL	Leave	set
1	5:00pm	6:30pm	:05	6:35pm	6:40pm	7:10pm	10min
2	5:20pm	6:50pm	:05	6:55pm	7:00pm	7:30pm	10min
3	5:40pm	7:10pm	:05	7:15pm	7:20pm	7:50pm	10min
4	6:00pm	7:30pm	:05	7:35pm	7:40pm	8:10pm	10min
5	6:20pm	7:50pm	:05	7:55pm	8:00pm	8:30pm	10min
6	6:40pm	8:10pm	:05	8:15pm	8:20pm	8:50pm	15min
7	7:05pm	8:35pm	:05	8:40pm	8:45pm	9:15pm	15min
8	7:30pm	9:00pm	:05	9:05pm	9:10pm	9:40pm	10min
9	7:50pm	9:20pm	:05	9:25pm	9:30pm	10:00pm	10min
10	8:10pm	9:40pm	:05	9:45pm	9:50pm	10:20pm	

While GRR will encourage trainers to arrive 1 hour before scheduled post time, 1 ½ hour before scheduled post time will be planned. Trainers will be encouraged to be efficient and exit within ½ hour after the race. The post time schedule will ensure that no more than 6 races will be in the race paddock at any given time, for an average of 48 horses.

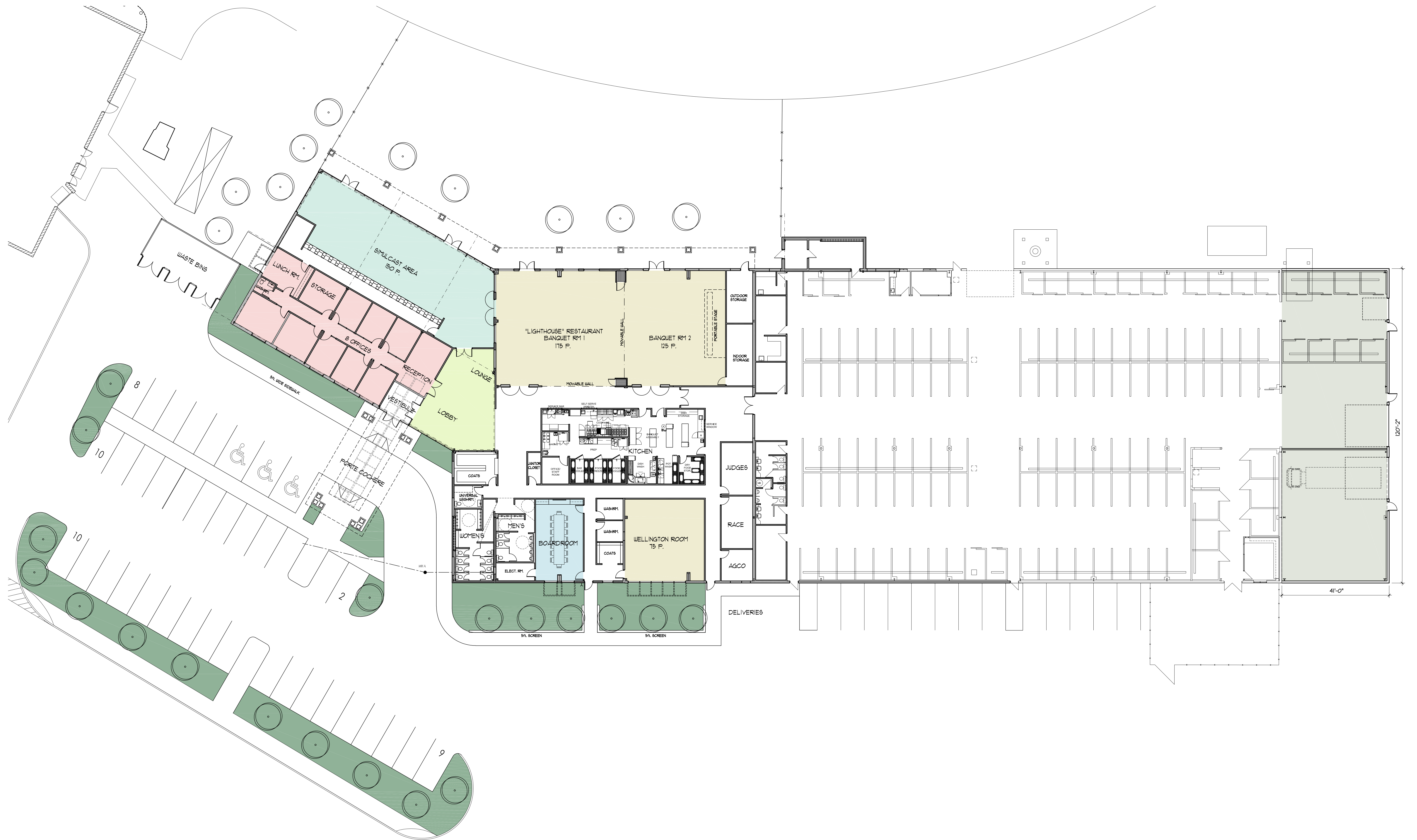
Main Gate Entrance X Control & Health Check

Drivers Exit

Entrance
Closed



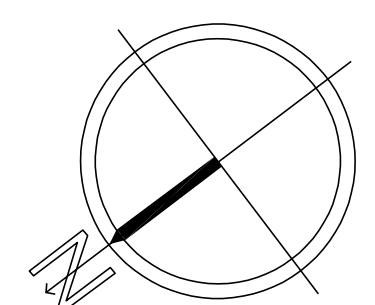
Exit to Track



GRAND RIVER AGRICULTURAL SOCIETY
 SHIP-in-BUILDING RENOVATION & ADDITION
 Elora, Ontario

FLOOR PLAN

Scale: 1/16"=1'-0"



WASYLKO
 ARCHITECT INC.
 370 QUEENS AVE
 LONDON ON
 N6B 1X6
 519.663.0888
 FAX 663.5238