

GRAND RIVER RACEWAY

presents

HARNESS THE HOPE

Friday, August 30, 2024 | Post Time: 6:30 pm

Supporting those affected by breast cancer

All funds raised during event are in support of:

Harness the Hope 

DONATE HERE

Donations will be matched by
Grand River Ag Society up to \$12,500!



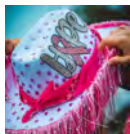
Event Details



Harness the Hope &

Buy Harness the Hope Swag

Get your pink swag! The Harness the Hope booth will be on The GrandWay Patio. Portion of funds raised go to breast cancer initiatives.



Best Dressed Competition

Show off your pink and win a great prize! Prizes for best dressed – guests, horse, and groom. Register at the Harness the Hope booth. Contest winner announced after Race #7.



Get your NEIGHbourhood Activity pack!

Visit the mutuel tellers in The Grandway Hall to get your free bag.

ELORAFERGUSTODAY.com

Get your picture with EloraFergusToday!

EloraFergusToday.com is here capturing the event and all of our wonderful guests!



Lauren Roy is here!

Lauren Roy will be singing the National Anthem before the races begin.



Food Trucks

Endless Inspirations is here! Visit them at the far end of the East Gate.

PICTURE US
— Photo & Video Experience Curators —

Picture Us photobooth in The GrandWay Hall

Picture Us is a photo and video experience. Grab a photo with friends, the photos are available to you to keep and share on social!

TREAT
yourself

Sweet treats on sale!

Fancy That Cake cookies and Edible Promotions pink chocolate ribbons are on sale at all GrandWay bars and at the Harness the Hope booth. Proceeds going to Harness the Hope.



Bid on Silent Auction items

We've got a variety of items showcased near the Harness the Hope booth. Place your bid! Auction closes at 8:00 pm.

DONATE HERE:

Tonight all funds raised during the event are in support of:

Harness the Hope &



Our Emcees for the night!

MEET TAMMY AND CHAR FROM STUDIO BOUTIQUE

Studio Boutique is owned by Best Friends Tammy & Charlene. Tammy a long time entrepreneur opened up her first Boutique in 2020 (yes two weeks before the pandemic) and in December 2020 life changes brought her back to Ontario. In March 2021, her long time friend Char decided to join forces and open up a second location in Fergus, Ontario. Charlene left a 23 year Interior design career to help Tammy open Studio Boutique in downtown Fergus, ON. Charlene's creative background, sense of style, and pure talent for trending design is a huge compliment for the Boutique. Come in and meet the girls. Cheers.



Thank you for joining us!

Sponsored Named Races

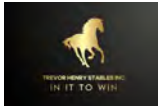



RACE 1 Elements Casino Grand River  **ELEMENTSCASINO**
IT'S ALL HERE | GRAND RIVER

RACE 3 2H Media 


RACE 5 **Harness the Hope sponsored by Skyline Group of Companies**  

RACE 6 The Cheesmond and Giddy Families

RACE 8 Trevor Henry Stables Inc. 

RACE 9 RLB LLP: Off to the RLB Races  Chartered Professional Accountants

RACE 10 Cut and Design Hair Salon 

RACE 11 Team Terri 

Broadcast Sponsor 

Cookie Sponsor 

Media Sponsor 

Featured Drinks at The GrandWay bars

\$12

The Pink Ribbon
Cocktail

Rose with a bubbly twist
Rose wine topped with prosecco.

\$5.50

The Pink Pacer
Mocktail

Cranberry Lemonade
Cranberry juice, 7Up, topped with a maraschino cherry.

Visit the
SILENT AUCTION



near the
Harness the Hope
booth on
The GrandWay patio!
Closes at 8:00 pm.



TAKEOUT AVAILABLE.
Seating right next to the track!

Check out the menu at
thegrandway.com

JOIN THE FUN!

All ages welcome!

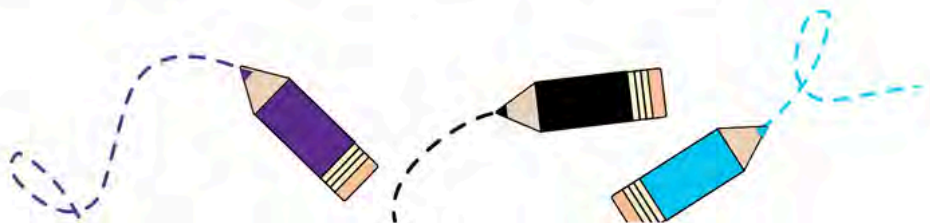


NEIGHbourhood

- LEARN ABOUT HORSERACING
- GET FREE STUFF
- DO FUN ACTIVITIES
- AND MORE...

See GRR Ambassador, Tom, or a mutuel teller
to receive your NEIGHbourhood activity bag!

grandriverraceway.com



Grand River Raceway Entries

HORSES	TRAINER	DRIVER	
ABOUT A BOY	11	BOUGHTON, DAVID M	4,7
ACEFORTYFOURBEAVER	9	COULTER, SCOTT	2,5,8
A FINE BORDEAUX	4	FILLION, SAMUEL	2,6,10
ANGEL FLY AWAY	7	GODDARD, MARK A	3,5
ARTSALIVE	10	GOIS, ONDREJ	8
AXEL BOVINO	3	GUGLIELMI, NELLO	11
BANK ON LUCAS	2	HARRIS, J BRADLEY	3,5,8,10
BELVEDERE KATHY	6	HAUGHAN, ANTHONY P	1,2,3,4,5,9,10,11
B JS CHOICE	5	HENRIKSEN, DAGFIN E	6
BLUE HERON	2	HENRY, TRAVIS J	1,2,3,5,8,10,11
BOOTS N BRIAN	11	HOUSE, LORNE S	2,7,10,11
BOZAK	9	HUDON, STEVEN	8
BRIGHTSIDE MASEO	5	KELLY, COLIN	7
CABOT TOWER	1	LACHANCE, MARTIN E	9
CALL ME MO	3	MACDONALD, BRETT A	1,2,6,8,9,10
CASUAL GUY	2	MACKENZIE, PAUL G	1,3,11
CEREAL KILLER	11	RATCHFORD, TODD	1,5,9,11
CHARMO CASH	4	RENAUD, JEAN BERNARD	3,5,7,9
CHESTERMAN	10	RICHARDSON, BRUCE M	6,7,10
DEUCE HANOVER	5	ROONEY, GARRETT L	1,3,6,11
DONTPLAYWITHFIRE	9	RYAN, JASON D	1,3,5,8,9,10,11
DREAMY FELLA	11	SMITH, THOMAS W	4
DUCHENNE	8	STORRIE, AUSTIN	1,4,5,9,10,11
EXOTIC DRAGON	8	STEWART, NICHOLAS	1
FATED FIRE	8	THIESSEN, DARYL	6,8,9
FEAR THE CRUSH	8	TOSCANI, GINO	9
FEAR THE DICE	11	YOUNG, SCOTT R	3,4
FEEL ITINYOURHANDS	1		
GANDALF THE BAY	10		
GIGITYGIGITYGIGTY	10		
GIN MASTER	4		
HAPPY LOOKER	1		
HES STILL WATCHING	3		
IM A CAPTAIN	10		
ITS NOT MY VAULT	7		
JEMENAR	1		
J M CELEBRITY	6		
JS BETTHISLADY	1		
LIL RED SPORTSSTAR	11		
LONGSHOT PANIC	3		
MACWOW	5		
MADEWRITE	9		
MAGICAL AOINE	5		
MASSEDONIA	2		
MATTS TUITION	11		
MCSEASHORE	9		
MIKI BURKE	11		
MILITARY SECRET	11		
MR COMMODORE	3		
MS KIRSI	6		
MVP KAMALA	1		
OUTLAW JESSE JAMES	3		
PEBBLE BEACH PRO	10		
PRICE CONTROL	10		
RAMIRO	4		
RAW POWER	3		
REDLAND WRANGLER	3		
RED MENACE	9		
ROYAL ME	7		
SHEILAS BRUSH	1		
SILVER MANALISHI	6		
SMOKIN HOT DUDE	5		
SNOWPORT	9		
SOUTHWIND INFUSION	10		
SOUTHWOLD GEMA	6		
SUNDAY SHOES	4		
SWEET GADGETS	8		
SWEET SWIRL	7		
TALBOT EHBESEA	6		
TAMARA HANOVER	1		
TH EMMETT	2		
TIE GAME	2		
TORQUE DELIGHT	9		
TREASURES WATCHING	8		
VERY BLUE CHIP	11		
VOGUE BLUE CHIP	5		
VOOM VOOM	8		
VOWEL FOR VANNA	7		
WATCH HER DEWITT	8		
WATCHING SUNSET	10		
WATCH YOUR MOUTH	5		
WICKED ENDING	9		
WILDCAT DELIGHT	1		
WORLD REVIVAL	5		
ZIPPENRIPPEN	3		

Track Speed Ratings

SEVEN-EIGHTHS MILE TRACK

WOODBINE MOHAWK PARK	1:55.0
----------------------	--------

FIVE-EIGHTHS MILE TRACKS

FRASER DOWNS	1:59.0
GEORGIAN DOWNS	1:57.2
GRAND RIVER RACEWAY	
KAWARTHA DOWNS	1:58.0
NORTHLANDS PARK	1:57.4
RIDEAU CARLETON RACEWAY	1:58.1
HIAWATHA HORSE PARK	1:57.1
STAMPEDE PARK	1:58.1

HALF-MILE TRACKS

CHARLOTTETOWN DRIVING PARK	2:01.0
CLINTON RACEWAY	2:00.3
DRESDEN RACEWAY	2:00.2
EXHIBITION PARK RACEWAY	2:01.3
FLAMBORO DOWNS	1:58.0
FREDERICTON RACEWAY	2:00.4
HIPPODROME d'AYLMER	2:03.1
HANOVER RACEWAY	2:00.3
INVERNESS RACEWAY	2:02.2
LEAMINGTON RACEWAY	2:01.0
HIPPODROME de QUEBEC	2:02.2
SUMMERSIDE RACEWAY	2:01.1
NORTHSIDE DOWNS	2:04.1
HIPPODROME TROIS-RIVIERES	2:01.4
TRURO RACEWAY	2:01.0
WESTERN FAIR RACEWAY	2:00.1

Trainer Changes

Race	Horse	Trainer Change
3	CALL ME MO	Ronald A Macdonald to Nelson J White
3	LONGSHOT PANIC	David Pilon to Wayne A Smith
7	VOWEL FOR VANNA	Matthew Bax to John J Holding

GRAND RIVER RACEWAY

By Ken Middleton, Jr. - Friday, August 30

Most Probable Winner:

Race 1 - #2 Wildcat Delight

Longshot Special

Race 6 - #5 Belvedere Kathy

Race 6 Selections 3-4-1-2

3 SILVER MANALISHI makes her way to Elora in search of a maiden-breaking score for trainer Dion. The filly has the speed needed to handle this group.

4 TALBOT EHBESEA was a distant third over this oval last week. She can improve against this group.

1 MS KIRSI takes a break from Mohawk Park. The rail should add to her appeal this evening. Contender.

Race 1 Selections 2-5-3-1

2 WILDCAT DELIGHT gets some serious class relief to work with this evening, and it could prove to be the difference maker for the daughter of Bettors Delight.

5 CABOT TOWER went home empty handed in her last two starts, but class relief should help her in here.

3 HAPPY LOOKER has gone through some recent struggles, but she still might be good enough to share.

Race 7 Selections 5-2-1-3

5 ITS NOT MY VAULT totes a perfect record into this outing for trainer Baxter, who will look to keep the ball rolling with the daughter of The Bank. Top call again.

2 SWEET SWIRL went to the front and didn't look back in her latest assignment. Exacta factor in here.

1 ANGEL FLY AWAY went a long way on the lead last time, but two foes got to him late. Trifecta factor.

Race 2 Selections 4-3-6-5

4 BLUE HERON showed good wheels on the end of the mile in his August 10 qualifier for trainer Beelby. The son of Archangel can do some damage in here.

3 BANK ON LUCAS has shown improvement in his last couple of assignments. He merits respect again.

6 TIE GAME moves in with some softer company this evening and it just might lead to an improved effort.

Race 8 Selections 2-7-8-4

2 WATCH HER DEWITT powered to the top last time and rolled to an easy victory in 1:53.3. The mare gets a great post to work from in her quest to double up.

7 FATED FIRE has nabbed cheques in five of her last six outings. She can make her presence felt again.

8 DUCHENNE has been ultra consistent in recent weeks for trainer Beaton. She can share once again.

Race 3 Selections 8-2-3-4

8 MR COMMODORE had zero luck in his last four tries at Mohawk Park, but he was a winner over this oval five lines down his page. He can bounce back.

2 AXEL BOVINO returns to action and does so with a sharp-looking qualifier under his belt. Major danger.

3 RAW POWER rallied to grab the show dough in his latest effort. His inside post makes him a solid threat.

Race 9 Selections 1-5-6-3

1 BOZAK has yet to hit the board from six attempts, but this might be a better spot for the rookie to gain some confidence. I'll look for him to improve in here.

5 RED MENACE kicked home in :28.4 to grab the runner-up spot in his latest. He merits respect again.

6 MADEWRITE makes his debut following a pair of qualifying preps for trainer Boyd. Trifecta factor here.

Race 4 Selections 4-3-2-1

4 SUNDAY SHOES has hit the board in each of his last four starts, but he's still looking for his first win. He just missed in his last two tries. Top call tonight.

3 A FINE BORDEAUX gets a change of scenery in here and he does so with hopples added. Contender.

2 GIN MASTER trotted an even mile in a recent prep at Mohawk Park. He opts to try this oval in his debut.

Race 10 Selections 1-5-4-3

1 WATCHING SUNSET had a rough trip last time at Mohawk Park and the end result was an eighth place finish. He finds an easier spot here and gets the rail.

5 CHESTERMAN was no match for Mohawk Park foes in his last two attempts. He can rebound here.

4 GANDALF THE BAY has nabbed shares in five of his last six outings. He can crack the top three here.

Race 5 Selections 2-7-6-8

2 DEUCE HANOVER has gone through a rough patch in his last four assignments, but maybe things will get better tonight. He hooks an easier group here.

7 SMOKIN HOT DUDE brings a two-race winning streak into this assignment. He merits major respect.

6 BRIGHTSIDE MASEO has hit the ticket in each of his last four tries for trainer Walker. Top three threat.

Race 11 Selections 1-5-9-6

1 MILITARY SECRET has done good things in his last two outings for trainer Sherman, who gets the rail to work from tonight. The veteran gets the nod here.

5 VERY BLUE CHIP has hit the board in five of his last six assignments. The gelding is an Exacta factor.

9 DREAMY FELLA has been putting up terrific stats so far this season. He's a logical top three contender.

Betting Basics

Some essentials to get you started with making a wager.

1 How to wager



Place your bet by visiting a teller, or using a self-serve terminal.

To place a bet here are just 5 things you need to know:

- 1 Name of racetrack (choose from any track in the simulcast feeds)
- 2 Number of the race
- 3 Amount of your bet (e.g. \$2)
- 4 Type of bet (see step 2)
- 5 Horse's number (see step 4)

Once you have decided what you want to bet, head to the nearest seller's window and use the sample statement as your guide:

Hello, (Racetrack), race 6, \$2 to WIN on Horse #4

How to use a self-serve terminal:

- 1 Swipe your Cash Card/Insert Cash
- 2 Enter the initial PIN #1234 (then choose a new PIN)
- 3 Press/Tap the track you would like to bet: (defaults to current race)
- 4 Tap the Horse Number: **#4**
- 5 Press/Tap the Bet Type: **WIN**
- 6 Press/Tap the Bet Amount: **\$2**
- 7 Press/Tap the Race Number: **Race #6**
- 8 Press Green **"Make BET"** button
- 9 Press/Tap the **"Finish with Receipt"** button
- 10 Be sure to check your ticket to confirm it's the bet you wanted

To get a Cash Card or for assistance ask a teller, or a staff member.

2 Types of bets



Single horse bets (minimum \$2.00 bet is required)

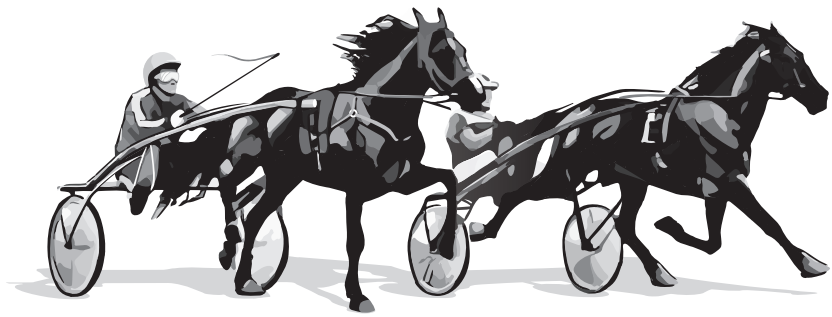
Bet type	Level of difficulty	Explanation and expectation
Win	U U U	Your horse must finish 1st; payoff determined by the win odds.
Place	U U	Your horse must finish 1st or 2nd; payoffs better than to show.
Show	U	Your horse must finish 1st, 2nd, or 3rd; modest payoffs.

Exotic multiple-horse bets

Bet type	Level of difficulty	Explanation and expectation
Exacta*	U U U U	Your horses must finish 1st and 2nd in exact order; riskier bet that can pay a little or a lot, depending on the horses' odds.
Daily double	U U U U U	Pick the winners of two designated consecutive races.
Pick 3, Win 4, Pick 5, Pick 6	U U U U U U	Select the winners of a designated set of consecutive races. The wager must be made prior to the start of the first race in the multi-race wager.
Triactor*	U U U U U U U	Your horses must finish 1st, 2nd, and 3rd in exact order; can be expensive to play if you use a lot of horses.
Superfecta*	U U U U U U U U	Your horses must finish 1st, 2nd, 3rd, and 4th; big payoff possible.

* Exotic bets require the horses to finish in the EXACT order you select, unless you "BOX" the bet, in which case your selections can finish in any order.

For more information visit ONTARIORACING.com



3 Choosing your horse



How to read the program

<p>1 Red- Ag17⁸ Ag17⁸ Ag10⁸ Ag3⁸ Jy19⁸ Jy12⁸</p>	<p>2 B c 3. 12 FlmD 9 FlmD 7 Moh 7 Moh</p>	<p>3 Mach Three-Wheres The Beach-Beach Towel D-ConfedCup D-ConfedCup D-OnSS-gf 3yr-Open</p>	<p>4 26 ft 26 ft 12 ft 21 ft</p>	<p>5 SOMEBEACHSOMEWHERE 50000 m 180000 m 50000 m 1100000 m 50000 m</p>	<p>6 Paul MacDonell 157 A Red-White (1195-141-121-119 .207)</p>	<p>7 Tr. Brent MacGrath (9-8-1-0 .950) Schooner Stables, Bible Hill, NS Breeder: Stephanie Smith, OH</p>	<p>8 2008 1:48³MM ft 9 8 1 0 89% \$1,511,500 2007 1:49⁵S Moh ft 6 6 0 0 100% \$812,592 Life 1:48³MM 3yo 14 wins \$2,324,092</p>	<p>9 PMacDnll BMacGrth *15 Somebeachsmwahr SantnnBlChp ThMhgnPn 9 PMacDnll BMacGrth *05 Somebeachsmwahr DecSlstr SantnnBlchp 6 PMacDnll BMacGrth *05 Somebeachsmwahr KeystonHrt DecSlstr 8 PMacDnll BMacGrth *05 Somebeachsmwahr KeystonHrt ThMhgnPn 6 PMacDnll BMacGrth *10 ArtOfddl Somebeahsmwahr SharThDight 9 PMacDnll BMacGrth *20 Somebeachsomwahr ArtOfddl BadlndsNtr 8</p>
---	---	--	---	---	--	---	---	--

All of the numbers and letters in the program might seem confusing or overwhelming at first, but focusing on these sections makes choosing a horse simple.

- 1 Horse's number in the race
- 2 Horse's post position colour
- 3 Horse's colour, sex, age, sire (father), dam (mother), sire of the dam
- 4 Morning line odds
- 5 Horse's name
- 6 Driver and Driver Record (Name, # of wins, # of 2nds, # of 3rds, winning %)
- 7 Trainer information
- 8 Horse's Lifetime record (with best win time, track size, track, age, lifetime wins and lifetime earnings)
- 9 Horse's current record (# of races, # wins, # of 2nds, # of 3rds, and money earned)

4 The odds



Odds are also important to consider when choosing your horse. Horses that are thought to have a better chance of winning will typically have lower odds.

Morning line odds

Odds listed in the race program are the "morning line" odds. These are predictions of how the public will bet on the race. They are set by the track's handicapper when the race program is published, before the wagering starts.

The actual odds will be posted on the **Television** or in-field on the **Tote Board** before the race; they change up until post time, depending on how customers are betting on each horse in the race.

Calculating a \$2 win prize

To calculate a win prize, find the Odds of a horse on the **Television** or **Tote Board** (in-field board).

Multiply the first number by 2, then divide that number by the second digit (if there is one), and then add \$2. Simple as that!

Odds	1/2	2/1	7/2	5/1	10/1
Pays	\$3.00	\$6.00	\$9.00	\$12.00	\$22.00

Helpful facts for betting

- Some racetracks have a television simulcast commentator who tries to identify winning horses (handicaps) between the races. Listen and see if you can pick up any good tips to bet on.
- A good betting method is to choose horses with current odds two to three times higher than their morning line odds.

3 Tips to remember

WIN BETS on the FAVOURITE pay 32% of the time
PLACE BETS on the FAVOURITE pay 53% of the time
SHOW BETS on the FAVOURITE pay 67% of the time

* Numbers listed above are approximate, may vary by racetrack.

Proudly supported by



1

PACE

\$0.20 TRIFECTA & EXACTA & \$0.20 SUPERFECTA & PICK 5- \$5000 GUARANTEED(1-2-3-4-5) & DAILY DOUBLE (Races 1 and 2)

1 MILE

PURSE \$5800. FILLIES & MARES - N/W \$1,500 LAST 3 OR \$2,260 LAST 4 (W/O \$2,500 LAST 5 N/E).

WARM-UP PAD

PROBABLE FAVOURITES: 2-5-4-1

ASK FOR HORSE BY PROGRAM NUMBER

Table with columns: Date, Track, CCndVar, Class, Purse, 1/4, 1/2, 3/4, Fin, Fld, PP, 1/4, 1/2, 3/4, Str., Fin., 1/4, L1/2, L3/4, L1/4, Time Odds Drv, Trn, First, Second, Third. Rows include race details for horses like JEMENAR, WILDCAT DELIGHT, HAPPY LOOKER, FEEL ITINYOURHANDS, CABOT TOWER, MVP KAMALA, TAMARA HANOVER, SHEILAS BRUSH, and JS BETHISLADY.

2

TROT
1 MILE

\$0.20 TRIFECTA & EXACTA & PICK 4 \$2500 GUARANTEED(2-3-4-5) & \$0.20 SUPERFECTA
PURSE \$8000. PROSPECT SERIES: 2 YEAR OLD COLT & GELDING TROT. LEG 4A. STARTING FEE \$100 CDN

WARM-UP PAD

PROBABLE FAVOURITES: 3-5-6-4

ASK FOR HORSE BY PROGRAM NUMBER

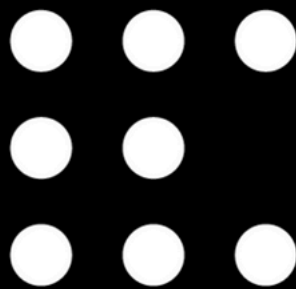
Date	Track	CCndVar	Class	Purse	1/4	1/2	3/4	Fin	Fld	PP	1/4	1/2	3/4	Str.	Fin.	1/4	L1/2	L3/4	L1/4	Time	Odds	Drv	Trn	First	Second	Third			
1	6-1	Anthony Haughan 185 Green-White-Gold (565-70-76-75-.242)										Tr: Matthew Trelford (6-0-1-0-.92) sy Q2:04 Wbs7/8										2024	4	0	1	0	\$1,500		
	RED	TH EMMETT† (2, 7/8, 2:04-Q \$1,500)										Matthew & Roy Trelford, Mildmay, ON										2023	0	0	0	0	\$0		
Aug24	10	Hnvr	28ft†	Balncd image	45000	:29 ³	1:00 ²	1:31 ¹	2:00 ⁴	8	7	4 ^{1/2}	5 ^{1/2}	6 ⁴	7 ¹⁰	7 ¹⁸	:30 ²	:31 ¹	:30 ²	:32 ²	2:04 ²	44 ⁷⁰	HeTr	TreM	ShtrGrn	CptnSzk	FrstClssRI		
Aug17	4	Hnvr	23sy†-3	Balncd image	6000	:31 ²	1:04 ¹	1:35 ¹	2:05 ²	7	3	2 ^{1/2}	2 ²	2 ^{1/2}	2 ³	2 ⁴	:31 ³	:33	:30 ⁴	:30 ⁴	2:06 ¹	25 ⁵⁰	HeTs	TreM	ShtrGrn	ThEmmett	Macthenight		
Jul23	7	Wbs7/8	24ft†	2y-nw1r8000l	16000	:28 ³	:58	1:28 ⁴	1:57 ¹	9	x7	x8dis	9dis	9dis	9dis	9p8p7dis					125 ⁶⁵	CuIT	TreM	CoverBand	TieGame	NrthmDrfr			
Jul12	4	Grvr5/8	24ft†	Prospect	8000	:29 ⁴	1:01 ²	1:31 ²	2:00 ⁴	9	5	7 ⁹ 1/2	7 ¹²	7 ¹³	7 ¹⁶	6 ¹⁹	:31 ³	:32 ¹	:30 ¹	:30 ³	2:04 ³	12 ⁴⁵	CouS	TreM	SeemeZoom	Massedonia	Capitalist		
Jul5	8	Wbs7/8	24ft†	2yr-qu		:30 ³	1:03	1:34 ²	2:02 ⁴	4	x	7dis	7dis	7dis	7dis	7dis							nb	McND	TreM	YGssdt	LfAsItCms	HayDad	
Jun29	5	Wbs7/8	18sy†-3	2yr-qu		:32 ¹	1:02 ¹	1:33 ²	2:04	1	3 ⁷	3 ⁵	3 ³ 1/2	3 ⁴ 1/2	1h		:33 ³	:29 ³	:30 ⁴	:30	2:04	nb	MacJ	TreM	ThEmmett	WndlIBlChp	JayportCash		
2	8-1	Lorne House 159 Black-Grey-White (462-61-72-78-.274)										Tr: Cassidy Schneider (493-68-64-46-.241)										2024	1	0	0	0	\$400		
	BLUE	CASUAL GUY (\$400)										Colonel Schneider Jr, Arthur, ON										2023	0	0	0	0	\$0		
Aug18	3	GeoD5/8	21gd-1	Prospect	8000	:31 ³	1:03 ²	1:34 ³	2:04	6	3x	6 ²⁴	6 ¹⁶	6 ¹⁷	6 ¹⁸	5 ²¹ 3/4	:36 ²	:30 ¹	:31 ²	:30 ²	2:08 ²	20 ²⁵	ByrS	SchC	Massedonia	SundayShoes	BankOnLucas		
Aug7	4	Grvr5/8	24ft	2yr-qu		:31	1:02 ³	1:34	2:03 ³	3	3	3 ³	3 ⁴	3 ⁵ 3/4	2 ⁵	2 ⁴ 3/4	:31 ³	:31 ⁴	:31 ¹	:30	2:04 ³	nb	HouL	SchC	AnglFlyAwy	CasualGuy	JMCelebrity		
3	2-1	Brett Macdonald 135 Burgundy-White-Black (1101-151-154-142-.257)										Tr: Scott McEneny (66-12-5-4-.244) ft 2:01 ² KD5/8										2024	5	1	0	1	\$4,960		
	WHITE	BANK ON LUCAS† (2, 5/8, 2:01 ² , 1 \$4,960)										Scott McEneny, Martwest Racing Lp, Cantucky Farm Inc, ON										2023	0	0	0	0	\$0		
Aug18	3	GeoD5/8	21gd-1	Prospect	8000	:31 ³	1:03 ²	1:34 ³	2:04	6	1	4 ^{1/2}	4 ^{1/2}	3 ⁹ 2	2 ²	3 ¹	:32 ²	:31 ⁴	:30 ⁴	:29 ¹	2:04 ¹	3 ⁶⁵	FilS	McES	Massedonia	SundayShoes	BankOnLucas		
Aug9	4	KD5/8	20ft†	Prospect	8000	:30	1:01 ²	1:31 ¹	2:01 ²	5	3	2 ²	3 ^{1/2}	3 ^{1/2}	2 ²	1 ^{hd}	:30 ²	:31 ¹	:29 ⁴	:30	2:01 ²	2 ¹⁰	FilS	McES	BankOnLucas	SundayShoes	Massedonia		
Jul30	2	Wbs7/8	24ft	Onss-rs	20000	:28 ¹	:57 ³	1:27 ⁴	1:58 ²	10	2	x8 ²⁴	8 ²³	8 ¹⁴ 3/4	8 ¹² 1/2	7 ¹⁴ 3/4	:33	:29 ¹	:28 ³	:30 ³	2:01 ²	3 ⁸⁵	MacJ	McES	HpLucas	NrthmDrfr	HstrnSlstr		
Jul18	9	Wbs7/8	20ft	2y-nw1r8000l	16000	:29 ²	:59	1:29 ³	1:58 ⁴	10	2	4 ^{1/4}	4 ⁹ 1/4	4 ⁵ 1/4	5 ^{1p} 3/4	6 ⁷ 5	:30 ¹	:30 ¹	:30 ¹	:29 ¹	1:59 ⁴	15 ²⁵	MacJ	McES	RoyalLife	BlssMFthr	DrknsCks		
Jul12	7	Wbs7/8	23gd-1	Onss-rs	20000	:29 ¹	1:00 ¹	1:30 ³	1:58 ³	9	7	7 ¹⁴ 1/4	7 ¹³ 3/4	8 ¹⁰ 1/4	8 ¹² 1/4	8 ¹² 1/2	:32 ²	:30 ³	:29 ³	:28 ²	2:01	34 ⁴⁰	CuIT	McES	Day	HayDad	TheGovernor		
Jul12	2	Wbs7/8	20ft	2yr-qu		:30 ³	1:02	1:31 ³	2:00 ¹	9	9	8 ¹⁰ 1/4	8 ¹¹ 1/4	6 ⁹ ix ¹⁰	x8 ¹⁶	8 ³⁰	:32 ³	:31 ³	:29 ²	:32 ³	2:06 ¹	nb	HeTr	McES	Ten	GdGillyHnvr	ShtrGrn		
Jun26	1	Grvr5/8	25ft	2yr-qu		:30 ¹	1:03 ¹	1:33	2:04 ³	3	3	1 ³ 1/4	1 ³	1 ² 3/4	1 ²	1 ^{1/4}	:30 ³	:32 ³	:29 ⁴	:31 ³	2:04 ³	nb	HeTr	McES	BankOnLucas	StsNtMlyVlt	SeemeZoom		
4	4-1	Scott Coulter 163 Tan-Black-White (592-90-76-86-.271)										Tr: Clark Beelby (32-5-3-3-.239)										2024	0	0	0	0	\$0		
	GREEN	BLUE HERON†										Coyote Wynd Farms, Oakville, ON										2023	0	0	0	0	\$0		
Aug10	5	Wbs7/8	20ft†	Qua		:30	:59	1:28 ³	1:58 ³	6	6	8 ⁸ 3/4	6 ¹³ 1/2	6 ¹⁴ 1/2	6 ¹³ 1/2	3 ¹⁰	:31 ⁴	:29 ⁴	:29 ⁴	:29 ¹	2:00 ³	nb	DruJ	BeeC	Manforce	Ebullient	BlueHeron		
5	5-2	Travis Henry 170 Light Blue-White (1415-245-235-218-.316)										Tr: Dale Fritz, Walkerton, Edward Acheson, Proton Station, ON										2024	5	2	1	1	\$9,960		
	BLACK	MASSEDONIA (2, 5/8, 2:01 ⁴ , 2 \$9,960)										Dale Fritz, Walkerton, Edward Acheson, Proton Station, ON										2023	0	0	0	0	\$0		
Aug18	3	GeoD5/8	21gd-1	Prospect	8000	:31 ³	1:03 ²	1:34 ³	2:04	6	2	3 ³	3 ³	2 ¹ 1/2	3 ³ 1/2	1h	:32 ¹	:31 ⁴	:30 ⁴	:29 ¹	2:04	1 ⁶⁰	HeTs	FriD	Massedonia	SundayShoes	BankOnLucas		
Aug14	5	Grvr5/8	25ft	2yr-qu		:30 ⁴	1:02 ³	1:33 ¹	2:02 ³	3	3	1 ³ 3/4	1 ²	1 ³ 3/4	1 ³	1 ² 1/4	:30 ⁴	:31 ⁴	:30 ³	:29 ²	2:02 ³	nb	HauA	FriD	Massedonia	EndswlStn	Kama		
Aug9	4	KD5/8	20ft	Prospect	8000	:30	1:01 ²	1:31 ¹	2:01 ²	5	5x	5 ¹⁷	5 ⁹ 3/4	5 ⁴	4 ⁵	3 ³ 3/4	:33 ²	:29 ²	:29 ¹	:30 ¹	2:02 ¹	1 ¹⁵	HeTs	FriD	BankOnLucas	SundayShoes	Massedonia		
Aug3	1	Hnvr	26ft	Nw10000lcd	4600	:30	1:01 ¹	1:31 ²	2:02 ⁴	6	5	x6 ¹⁸ 1/4	6dis	6dis	6dis	6dis	:33 ³							1 ¹⁵	HeTs	FriD	HdMAWshky	ChpHppnd	LtrnDnl
Jul24	1	Grvr5/8	20ft	2yr-nw1r1ft	6000	:30	1:01 ¹	1:30 ⁴	2:01 ⁴	6	3	1 ¹ 3/4	1 ¹	1h	1 ¹ 3/4	1h	:30	:31 ¹	:29 ³	:31	2:01 ⁴	6 ⁶⁰	HeTs	FriD	Massedonia	SundayShoes	ThAvery		
Jul12	4	Grvr5/8	24ft	Prospect	8000	:29 ⁴	1:01 ²	1:31 ²	2:00 ⁴	9	6	3 ⁴ 3/4	3 ³ 1/4	4 ⁴ 3/4	4 ⁵ 1/4	2 ⁶	:30 ⁴	:31 ¹	:30 ²	:29 ³	2:02	3 ⁶⁵	HeTs	FriD	SeemeZoom	Massedonia	Capitalist		
Jul3	3	Grvr5/8	26ft	2yr-qu		:30 ⁴	1:02 ¹	1:33 ⁴	2:03 ⁴	3	3	2 ³	2 ¹ 1/4	2 ² onk	1 ^{nk}	1 ²	:31 ²	:31 ¹	:31 ¹	:30	2:03 ⁴	nb	RoyL	FriD	Massedonia	MuskieMan	WldtrkyHnvr		
Jun8	2	Wbs7/8	17ft-1	2yr-qu		:29 ⁴	:58 ³	1:28 ¹	2:01 ¹	1	1	7 ¹⁸ 3/4	7 ²¹ 1/4	7 ²⁰	7 ¹³ 1/2	7 ¹³ 3/4	:33 ³	:29 ¹	:29 ²	:31 ⁴	2:04	nb	FriD	FriD	DrknsCks	GoBlue	CntryLgn		
6	3-1	Samuel Fillion 155 Blue-White (1272-204-205-209-.304)										Tr: Robert Kyle Fellows (570-96-85-87-.302) sy Q2:03 ² Wbs7/8										2024	4	0	1	0	\$4,800		
	YELLOW	TIE GAME† (2, 7/8, 2:03 ² -Q \$4,800)										N Yolanda Fellows, ON-Blair Corbeil, Mike McAllister, AB-James Ross, ON										2023	0	0	0	0	\$0		
Aug23	4	Wbs7/8	22ft†	Qua		:29 ³	:58 ⁴	1:28 ¹	1:58 ¹	6	6	6 ¹⁰	6 ¹⁰ 1/2	6 ⁸ 3/4	6 ⁵	7 ¹²	:31 ³	:29 ¹	:29 ¹	:30 ³	2:00 ³	nb	RoyL	FelR	YGtItKmp	SprgrnMily	BrsnsnshnD		
Aug9	5	KD5/8	20ft†	Onss-rs	20000	:29 ²	1:00 ³	1:29 ³	1:59 ²	8	4	7 ¹⁰ 3/4	7 ⁵ 1/2	8 ⁶ 3/4	7 ⁹	7 ¹²	:31 ³	:30	:29 ²	:30 ⁴	2:01 ⁴	22 ⁸⁵	YouS	FelR	WndlIBlChp	StnbdrPrs	SeemeZoom		
Aug1	3	Wbs7/8	26ft†	2y-nw1r8000l	16000	:30 ⁴	1:01	1:30 ²	1:58 ⁴	7	1	5 ⁵	5 ⁹ 1/4	4 ⁹ 8 ^{1/2}	4 ⁷ 1/2	5 ⁹ 3/4	:31 ⁴	:31	:29 ¹	:28	2:00	7 ⁴⁰	HeTr	FelR	Ntrctgld	CsnHlfx	SundayShoes		
Jul23	7	Wbs7/8	23ft†	2y-nw1r8000l	16000	:28 ³	:58	1:28 ⁴	1:57 ¹	9	2	4 ⁷ 3/4	4 ⁹ 3/4	5 ⁹ 3	4 ⁸ 1/4	2 ¹³ 1/4	:30 ¹	:29	:30 ¹	:30 ²	1:59 ⁴	27 ²⁰	FilS	FelR	CoverBand	TieGame	NrthmDrfr		
Jul12	7	Wbs7/8	23gd-1	Onss-rs	20000	:29 ³	1:00 ¹	1:30 ³	1:58 ³	9	3	1 ³ 1/2	1 ⁴ 1/4	1 ¹ 1/4	2 ² 1/2	7 ⁸ 1/2	:29 ³	:30 ³	:30 ²	:29 ³	2:00 ¹	7 ²⁵	FilS	FelR	Day	HayDad	TheGovernor		
Jun29	9	Wbs7/8	18sy†-3	2yr-qu		:32	1:02	1:32 ¹	2:03 ²	1	1	1 ⁴ 1/2	1 ⁵ 1/2	1 ² 1/2	1 ⁵	1 ⁷ 1/4	:32	:30	:30 ¹	:31 ¹	2:03 ²	nb	McND	FelR	TieGame	DAIAlexander			
Jun22	10	Wbs7/8	25ft	2yr-qu		:30 ³	1:02 ¹	1:33 ¹	2:01 ³	2x	x4x ³	5 ⁹ 8 ^{1/2}	5 ⁷ 1/4	5 ⁸ 1/2	6 ¹⁰		:31 ¹	:32 ³	:30 ⁴	:29	2:03 ³	nb	McND	FelR	FrstClssRI</				

CUT ✂ DESIGN
hair salon

FULL SERVICE HAIR SALON

WWW.CUTANDESIGN.CA

In loving memory of Grandma Heather



ELEMENTSCASINO

GRAND RIVER



FANCY THAT CAKE

Elegant wedding cakes
for modern couples.
Every slice tells a story
of love and creativity.

Visit us online

WWW.FANCYTHATCAKE.CA

INFO@FANCYTHATCAKE.CA

[@FANCYTHATCAKE](https://www.instagram.com/FANCYTHATCAKE)

Looking for a unique corporate gift?

Our custom logo cookies are the perfect solution for your corporate gifting needs. Edible logo cookies offer a unique and delicious way to leave a lasting mark on clients, partners, and employees!



ASK FOR HORSE BY PROGRAM NUMBER

Table with columns: Date, Track, Cnd, Var, Class, Purse, 1/4, 1/2, 3/4, Fin, Fld, PP, 1/4, 1/2, 3/4, Str., Fin., 1/4, 1/2, 1 1/4, 1 1/2, Time, Odds, Drv, Trn, First, Second, Third. Rows include race details for various horses like CALL ME MO, AXEL BOVINO, RAW POWER, HES STILL WATCHING, LONGSHOT PANIC, OUTLAW JESSE JAMES, ZIPPENRIPPEN, MR COMMODORE, and REDLAN WRANGLER.

CALL ME MO Trainer Change: Ronald A Macdonald to Nelson J White
LONGSHOT PANIC Trainer Change: David Pilon to Wayne A Smith

4

TROT
1 MILE

\$0.20 TRIFECTA & EXACTA

PURSE \$8000. PROSPECT SERIES: 2 YEAR OLD COLT & GELDING TROT. LEG 4A. STARTING FEE \$100 CDN

WARM-UP PAD

PROBABLE FAVOURITES: 4-3-2-1

ASK FOR HORSE BY PROGRAM NUMBER

Date	Track	CCndVar	Class	Purse	1/4	1/2	3/4	Fin	Fld	PP	1/4	1/2	3/4	Str.	Fin.	1/4	L1/2	L3/4	L1/4	Time	Odds	Drv	Trn	First	Second	Third		
1	8-1	RAMIRO		Anthony Haughan	185	Green-White-Gold (565-70-76-75-.242)				Tr: Meg Crone (275-50-39-39-.307)										2024	1	0	0	0	\$0			
RED	Bk g 2 by Archangel-Seawind Pascale-Deweycheatumnhowe	Breeder: Seawind Amg Stbs 2005 Inc,Boucouteche,NB-Ted Macdonnell,Allentford,ON										Last 5 Sts - \$0					Last 10 Sts - \$0											
Aug21	5	Grvr ^{5/8}	18ft	2yr-nw1rft	6000	:30 ⁴	1:02	1:31	2:00 ⁴	9	2	5 ⁶ / ₁₆	5 ⁹ / ₁₆	5 ¹⁰	6 ¹²	6 ¹⁴ / ₁₆	:32	:31 ²	:29 ³	:30 ³	2:03 ³	23 ²⁰	HauA	CroM	MvYrMss	TrtSlstr	TlbtEhbs	
Aug2	4	Wbs ^{7/8}	24ft	Qua		:30 ²	1:01 ³	1:31 ³	2:00	7	6 ⁹ / ₁₆	6 ⁸ / ₁₆	6 ¹⁰ / ₁₆	6 ⁸ / ₁₆	7 ¹⁸		:32 ¹	:31	:30 ²	:30	2:03 ³	nb	HauA	CroM	RoxieHart	RslvIndd	BrbSttn	
2	6-1	GIN MASTER		Austin Sorrie	163	Blue-Yellow (835-128-91-94-.251)				Tr: Marcel Barrieau (3-0-0-1-.111)										2024	0	0	0	0	\$0			
BLUE	B g 2 by Wheeling N Dealin-Shestheonetowatch-Kadabra LCYS 20,000	Breeder: Northfields Farm Inc,Meaford,ON										Last 5 Sts - \$0					Last 10 Sts - \$0											
Aug23	2	Wbs ^{7/8}	24ft	Qua		:31 ²	1:00 ³	1:30 ³	2:01 ⁴	6	7 ⁸	7 ¹³ / ₁₆	6 ⁹ / ₁₆	5 ⁴ / ₁₆	5 ⁸		:33	:30 ¹	:29 ²	:30 ⁴	2:03 ²	nb	SorA	BarM	CheekyLass	UltraMyles	TymIEmrld	
3	5-2	A FINE BORDEAUX		Dave Boughton	148	Blue-Yellow-White (22-2-1-4-.176)				Tr: Scott McEneny (66-12-5-4-.244)										2024	3	0	0	0	\$0			
WHITE	B c 2 by Green Manalishi S-Sweet Mademoiselle-Varenne HBG 25,000	Breeder: Winning Key Inc,Leechburg,PA										Last 5 Sts - \$0					Last 10 Sts - \$0											
Aug27	5	Wbs ^{7/8}	23ft	2yr-nw1r8000l	16000	:29 ¹	:59 ¹	1:29 ²	1:58	9	8	8 ¹³	8 ¹³ / ₁₆	7 ^X ¹⁰ / ₁₆	7 ³⁰ / ₁₆	7dis		:31 ⁴	:30	:29 ⁴		60 ³⁵	BouD	McES	WndrsBlChp	WldtrkyHnvr	WhityWhls	
Aug15	1	Wbs ^{7/8}	23ft	2yr-nw1r9500l	16000	:29 ³	1:01	1:30	1:58	10	5	9 ¹² / ₁₆	8 ¹⁰ / ₁₆	9 ⁰ ¹⁰ / ₁₆	7 ¹³	7 ¹⁰		:32	:31	:29 ¹	:27 ⁴	2:00	111 ⁴⁰	BouD	McES	NghtPhntm	WndrsBlChp	Ten
Aug8	4	Wbs ^{7/8}	23ft	Onss-rs	20000	:29 ¹	:59 ¹	1:30 ¹	1:58 ³	10	7	8 ⁰ ¹¹ / ₁₆	8 ¹² / ₁₆	7 ⁰⁷	8 ^X ¹³ / ₁₆	9 ³¹		:31 ³	:30	:30	:33 ¹	2:04 ⁴	37 ⁶⁵	BouD	McES	WndlBlChp	TheGovernor	Gravenhurst
Jul30	8	Wbs ^{7/8}	24ft	Onss-rs	20000	:29 ¹	:59 ¹	1:30 ¹	1:58 ³	10	7	8 ⁰ ¹¹ / ₁₆	8 ¹² / ₁₆	7 ⁰⁷	8 ^X ¹³ / ₁₆	9 ³¹		:31 ³	:30	:30	:33 ¹	2:04 ⁴	37 ⁶⁵	BouD	McES	WndlBlChp	TheGovernor	Gravenhurst
Jul24	6	Grvr ^{5/8}	27ft	2yr-qua		:31	1:02 ¹	1:32 ²	2:02 ⁴	1	1	3 ³ / ₁₆	3 ⁴ / ₁₆	1 ⁰¹	1 ³	1 ¹ / ₂		:31 ³	:31 ³	:29 ¹	:30 ²	2:02 ⁴	nb	BouD	McES	AFnBrdx	WngsOfGrm	HpLucas
Jul2	4	Wbs ^{7/8}	20ft	2yr-qua		:30 ⁴	1:00 ⁴	1:31 ¹	2:00 ²	1x	7dis	7dis	7dis	7dis	7dis								nb	FilS	McES	AlimonyMike	HpLucas	Getthegreen
4	9-5	SUNDAY SHOES		Scott Young	166	Burgundy-Gold (458-50-52-57-.213)				Tr: David Frey (80-11-13-12-.277)										2024	5	0	3	1	\$8,420			
GREEN	B g 2 by Wheeling N Dealin-Pointe Shoes-Muscle Mass	Breeder: Stuart & Patricia Bolender,Elora,ON										Last 5 Sts - \$8,420					Last 10 Sts - \$8,420											
Aug18	3	GeoD ^{5/8}	21gd-1	Prospect	8000	:31 ³	1:03 ²	1:34 ³	2:04	6	4	2 ¹ / ₂	1 ¹ / ₂	1 ¹ / ₂	1 ²	2 ^h		:31 ⁴	:31 ³	:31 ¹	:29 ²	2:04	6 ³⁰	YouS	FreD	Massedonia	SundayShoes	BankOnLucas
Aug9	4	KD ^{5/8}	20ft	Prospect	8000	:30	1:01 ²	1:31 ¹	2:01 ²	5	1	1 ²	1 ¹ / ₄	1 ¹	1 ²	2 nd		:30	:31 ²	:29 ⁴	:30 ¹	2:01 ²	1 ⁴⁰	YouS	FreD	BankOnLucas	SundayShoes	Massedonia
Aug1	3	Wbs ^{7/8}	26ft	2yr-nw1r8000l	16000	:30 ⁴	1:01	1:30 ²	1:58 ⁴	7	5	1 ¹ / ₂	2 ¹ / ₄	2 ⁰ ¹ / ₂	2 ¹ / ₄	3 ³ / ₄		:30 ⁴	:30 ³	:29 ¹	:29	1:59 ³	3 ¹⁰	YouS	FreD	Tnctrgld	CsnHlfx	SundayShoes
Jul24	1	Grvr ^{5/8}	20ft	2yr-nw1rft	6000	:30	1:01 ¹	1:30 ⁴	2:01 ⁴	6	2	2 ¹ / ₄	3 ²	3 ²	2 ¹ / ₄	2 ^h		:30 ²	:31 ¹	:29 ³	:30 ³	2:01 ⁴	13 ⁸⁰	YouS	FreD	Massedonia	SundayShoes	ThAvery
Jul12	2	Wbs ^{7/8}	23gd-1	Onss-rs	20000	:30	1:00 ³	1:30 ⁴	1:59 ²	8	6	1 ¹ / ₄	3 ³ / ₄	3 ⁴ / ₁₆	5 ⁹ / ₁₆	5 ¹⁹		:30	:31 ²	:30 ¹	:31 ³	2:03 ¹	39 ⁶⁰	YouS	FreD	GoBlue	GccGccG	LittleArrow
Jul2	2	Wbs ^{7/8}	20ft	2yr-qua		:30 ³	1:02	1:31 ³	2:00 ¹	4	4	5 ⁵ / ₁₆	5 ⁶ / ₁₆	5 ⁸	4 ¹¹	4 ¹¹		:31 ³	:31 ³	:30	:29 ¹	2:02 ²	nb	YouS	FreD	Ten	GdGilyHnvr	ShttrGrn
Jun22	8	Wbs ^{7/8}	25ft	2yr-qua		:30 ¹	1:00	1:31 ⁴	2:02	1	1	7 ¹² / ₁₆	6 ¹³ / ₁₆	6 ⁸	6 ⁸ / ₁₆	6 ⁵		:32 ³	:30	:30 ⁴	:29 ³	2:03	nb	YouS	FreD	ExtnddSsn	BeauBear	NrthmDrtr
5	10-1	CHARMBO CASH		Thomas Smith	168	Red-White (90-4-10-15-.161)				Tr: Jayne Walker (84-4-10-13-.165)										2024	7	0	0	0	\$1,308			
BLACK	B g 2 by Green Manalishi S-Hetties Charm-Angus Hall	Breeder: John Rier,Kitchener,Randy Rier,Hanover,ON										Last 5 Sts - \$940					Last 10 Sts - \$1,308											
Aug17	4	Hnvr	23syI-3	Balncd image	6000	:31 ²	1:04 ¹	1:35 ¹	2:05 ²	7	7	5 ⁷	5 ⁶	5 ⁵	5 ¹⁴	5 ¹⁸		:32 ⁴	:32 ³	:30 ⁴	:32 ⁴	2:09	31 ⁷⁵	SmiT	WalJ	ShtrGrn	ThEmmett	Macthenight
Aug9	3	KD ^{5/8}	20ft	Onss-rs	20000	:30	1:01 ²	1:31	2:00 ⁴	9	4	8 ¹⁴	8 ¹² / ₁₆	6 ⁰ ¹²	6 ¹⁵ / ₁₆	7 ²⁰ / ₁₆		:32 ⁴	:31	:29 ³	:31 ³	2:05	29 ⁶⁵	SmiT	WalJ	ArmstdFrbll	CsnHlfx	LmcltLChps
Jul30	3	Wbs ^{7/8}	24ft	Onss-rs	20000	:28 ³	:58	1:27 ³	1:56 ⁴	9	2	7 ¹³ / ₁₆	7 ¹² / ₁₆	6 ¹¹	7 ¹⁸	8 ²² / ₁₆		:31	:29 ²	:29 ²	:31 ²	2:01 ¹	114 ¹⁰	SmiT	WalJ	HayDad	ThBrACd	ModeloGold
Jul17	5	Grvr ^{5/8}	20ft	Nw1r5000lcd	6500	:29	1:00 ¹	1:29	1:59 ⁴	9	1	x8 ²⁶	9dis	9dis	9dis	9dis		:34 ¹					57 ⁰⁰	SmiT	WalJ	JeanieT	FlexOnThem	Grgfthngl
Jul12	4	Grvr ^{5/8}	24ft	Prospect	8000	:29 ⁴	1:01 ²	1:31 ²	2:00 ⁴	9	3	6 ⁹ / ₁₆	6 ¹⁰ / ₁₆	6 ¹⁰	6 ¹² / ₁₆	4 ¹⁵ / ₁₆		:31 ³	:31 ⁴	:30	:30 ³	2:04	9 ⁶⁵	SmiT	WalJ	SeemeZoom	Massedonia	Capitalist
Jul6	3	Hnvr	24ft	Nw10500lcd	4600	:30 ³	1:02	1:34	2:06	5	1	5 ¹¹	5 ⁹ / ₁₆	5 ⁶	5 ⁴	4 ⁷		:32 ¹	:31	:31 ²	:32 ¹	2:07 ²	3 ⁸⁰	SmiT	WalJ	LntnrDnl	ExpdtnPss	Teasin
Jun29	5	Hnvr	24ft	Nw10000lcd	4600	:29 ⁴	1:01 ¹	1:32 ²	2:03 ⁴	7	4	7 ⁹	6 ¹⁹ / ₁₆	6 ²⁰	6 ²³	6 ²⁶		:31 ³	:33 ²	:31 ²	:32 ³	2:09	4 ²⁵	SmiT	WalJ	HdMAWshsky	Saturday	CmprHnvr
Jun15	1	Hnvr	20ft	Qua-t&p		:30 ²	1:02 ³	1:34 ¹	2:05	2	2	2 ⁸	2 ⁷	2 ⁵	2 ⁷	2 ¹¹ / ₁₆		:32	:32	:31 ¹	:32 ¹	2:07 ²	nb	SmiT	WalJ	RngdBch	CharmboCash	

**CIVIL DESIGN
CONSTRUCTION SERVICES
ENVIRONMENTAL
GEOTECHNICAL
WATER RESOURCES**



* Grand River Raceway Racetrack Expansion

GEI Consultants is a consulting engineering and environmental firm that delivers value by providing professional services to improve our world's built environments. With more than 1,500 staff and 57 offices in Canada and the US, GEI provides multi-disciplined engineering and technical services to a range of private and public sector clients domestically and abroad.

WWW.CANADA.GEICONCONSULTANTS.COM

INFO@GEICONCONSULTANTS.COM

Barrie | Guelph | Hamilton | Kitchener | Listowel | London | Markham | Owen Sound | Vaughan

5

PACE
1 MILE

\$.20 TRIFECTA & EXACTA & SUPER HI-5
PURSE \$7500. HORSES & GELDINGS - N/W \$16,500 LIFETIME (W-ALL)

WARM-UP PAD

PROBABLE FAVOURITES: 2-1-3-8

ASK FOR HORSE BY PROGRAM NUMBER

Date	Track	CCndVar	Class	Purse	1/4	1/2	3/4	Fin	Flt	PP	1/4	1/2	3/4	Str.	Fin.	1/4	L1/2	L3/4	L1/4	Time	Odds	Drv	Trn	First	Second	Third					
1	5-2	Anthony Haughan 185 Green-White-Gold (565-70-76-75-.242)										Tr: Marc Crone (275-50-39-39-.307)																			
WORLD REVIVAL (3, 7/8, 1:55, 3 \$19,625)															Hutt Racing Stable, Malvern, PA																
BREEDER: Winbak Farm, Chesapeake City, MD															Last 5 Sts - \$5,000																
RED	B g 3 by Stag Party-Revival Cards-Royal Mattiesty HBG 12,000	Last 10 Sts - \$13,625																													
Aug13	9	GeoD ^{5/8}	24ft	Nw2r18200l	9500	:29	:58	:1:27	1:55 ⁴	8	1x	8 ²⁷	8 ^{dis}	8 ^{dis}	8 ^{dis}	:34	6 ⁶⁰	HauA	CroM	RustysBett	FtThCptn			2024	9	2	3	0	\$13,625		
Aug2	8	Grv ^{5/8}	25ft	Nw17000lcd	7500	:28	:57	:1:26	1:54 ³	5	4	3 ⁵	3 ^{3/4}	2 ^{01 1/2}	2 ^{3/4}	4 ^{1 3/4}	:29	:28	:28	:28	1:55	2:00	2	2	2023	8	1	2	0	\$6,000	
Jul15	7	Grv ^{5/8}	24ft	Prospect	8000	:26	:56	:1:24	1:53 ³	9	5	7 ^{9 1/2}	8 ⁷	7 ⁰⁶	7 ⁵	5 ^{2 3/4}	:28	:29	:28	:28	1:54	1:54	4	4	HauA	CroM	TrckyMcWckyLmbrghnL	LottoMax			
Jul6	3	Sar ^{5/8}	23ft	Prospect	8000	:27	:57	:1:26	1:55 ¹	9	1	4 ^{3 3/4}	2 ^{1 3/4}	1 ^{1 1/4}	1 ¹	1 ^{8 3/4}	:27	:30	:28	:28	1:55	1:55	4	4	HauA	CroM	WldRvvl	ThjckdMnms	AcrtfryDk		
Jun24	5	Wbs ^{7/8}	25ft	Prspctstrtrs	12000	:28	:57	:1:25	1:53 ³	9	x4	9 ^{12 1/4}	9 ^{12 1/4}	8 ^{1 1/2}	8 ^{1 1/2}	7 ¹⁰	:30	:29	:27	:28	1:53	1:53	3	3	JamJ	CroM	LmbrghnL	BlykDmtr	Moonwalker		
Jun16	3	Clntn	24ft	Prospect	8000	:29	:1:00	:1:29	1:58 ¹	8	6	5 ⁷	5 ^{6 3/4}	6 ⁰⁴	4 ^{3 1/4}	2 ^{be 2 1/2}	:31	:30	:28	:28	1:58	1:58	7	20	HauA	CroM	BlykDmtr	WldRvvl	Moonwalker		
2	8-5	J Bradley Harris 155 White-Green-Black (924-129-133-103-.256)										Tr: Shawn Steacy (272-28-36-32-.215)																			
DEUCE HANOVER (3, 7/8, 1:53, 2 \$18,720)															David McDonald, A K Malik Stable, Bc Reichheld Stables, On-Stephen Downey, NB																
BREEDER: Hanover Shoe Farms Inc, Hanover, PA															Last 5 Sts - \$2,160																
Last 10 Sts - \$17,070																															
BLUE	B c 3 by Bettors Delight-Dont Deny Me-Allamerican Ingot HBG 40,000	Last 5 Sts - \$2,160																													
Aug24	11	Wbs ^{7/8}	23ft	Nw23750lcd	18000	:26	:54	:1:22	1:50 ²	8	1	7 ⁸	7 ^{9 1/4}	8 ^{08 1/4}	7 ^{1 1/4}	6 ^{8 1/2}	:28	:27	:27	:28	1:52	1:52	4	2	4	2	DruJ	StEs	FsnchtHnvr	AClssYnk	CriAssnss
Aug5	6	Grv ^{5/8}	25ft	Nwss-rs	20000	:26	:56	:1:23	1:52 ²	9	2	8 ¹⁰	9 ^{1 1/2}	7 ¹²	6 ^{12 1/4}	6 ¹⁹	:28	:29	:27	:30	1:56	1:56	2	3	3	6	HauA	CroM	CntryKmd	ChkHnvr	MlWktsDm
Jul27	3	Wbs ^{7/8}	24ft	Nw24500lcd	18000	:27	:56	:1:24	1:51	8	3	6 ^{10 3/4}	6 ^{8 1/2}	7 ^{06 1/4}	7 ^{8 1/2}	8 ^{8 1/2}	:29	:28	:27	:27	1:52	1:52	3	3	3	3	DruJ	StEs	LikeAGlove	WlchHrtly	GndfTthBy
Jul19	7	Wbs ^{7/8}	22ft	Onss-rs	20000	:27	:55	:1:22	1:50 ³	8	8	8 ^{12 1/4}	7 ^{12 1/4}	7 ^{8 1/4}	7 ^{5 3/4}	7 ^{8 3/4}	:29	:27	:27	:28	1:52	1:52	3	3	3	3	DruJ	StEs	McPleasant	TheVicar	DnckEhskppr
Jul8	3	Wbs ^{7/8}	25ft	Nw19650lcd	18000	:27	:55	:1:23	1:51 ²	8	6	7 ^{12 1/4}	7 ^{10 3/4}	7 ⁹	7 ^{5 1/2}	3 ^{8 1/4}	:29	:28	:27	:26	1:51	1:51	3	3	3	3	DruJ	StEs	WlchHrtly	BrdyHnvr	DcHnvr
Jul2	3	Wbs ^{7/8}	20ft	Nw1r7500lcd	17000	:28	:58	:1:26	1:53 ²	10	8	2 ^{0nk}	1 ^{1 3/4}	1 ^{1 3/4}	1 ^{1 3/4}	1 ^{hd}	:28	:30	:28	:26	1:53	1:53	5	25	DruJ	StEs	DcHnvr	McPleasant	BrstlMntn		
3	3-1	Scott Coulter 163 Tan-Black-White (592-90-76-86-.271)										Tr: Harry Pouton (87-8-11-11-.204)																			
WATCH YOUR MOUTH L (2, 5/8, 1:58, 2 \$13,664)															Anco Capital Mgmt Inc, Innisfil, ON																
BREEDER: Amanda Riley, Rosensath, ON															Last 5 Sts - \$858																
Last 10 Sts - \$12,384																															
WHITE	B g 3 by Hes Watching-Hudson Gal-Astreos	Last 5 Sts - \$858																													
Aug9	8	Grv ^{5/8}	20ft	Nw2r15000l-L	7500	:27	:56	:1:25	1:54 ²	7	3	4 ^{3 1/4}	4 ^{4 1/2}	5 ⁴	5 ^{3 1/4}	7 ^{5 1/2}	:28	:29	:28	:29	1:55	1:55	3	3	3	3	CouS	PouH	AllBtsOnRd	VncndBlChp	ImACaptain
Aug2	6	Grv ^{5/8}	25ft	Nw1r8800lcd-L	6600	:27	:57	:1:25	1:54	6	3	1 ³	1 ^{4 1/4}	1 ⁵	1 ³	4 ²	:27	:29	:28	:29	1:52	1:52	3	3	3	3	HauA	CroM	BrghtsDms	BbbyBnBrkr	BJSChoice
Jul26	3	Grv ^{5/8}	24ft	Nw1r9000l-L	6600	:26	:55	:1:24	1:53 ²	7	2	1 ^{1 3/4}	1 ^{1 1/2}	1 ^h	2 ^{1 1/2}	6 ^{16 1/2}	:26	:28	:29	:32	1:56	1:56	9	25	RyaJ	PouH	LarjonLevi	JlsHnvr	Bobcaygeon		
Jul19	3	Grv ^{5/8}	20ft	Nw1r8600l-L	6600	:27	:56	:1:24	1:54	8	5	4 ^{3 1/4}	4 ^{9 1/4}	2 ⁰¹	5 ⁵	5 ^{4 1/4}	:27	:29	:28	:29	1:54	1:54	1	1	1	1	RatT	PouH	LarjonLevi	Minotaur	DAMagicMike
Jun24	1	GeoD ^{5/8}	25ft	Nw2r18400l-L	8900	:27	:56	:1:24	1:54 ²	8	2	3 ³	2 ^{1 1/2}	3 ^{4 1/4}	5 ^{6 1/2}	8 ^{2 1/4}	:29	:29	:29	:33	1:54	1:54	2	2	2	2	RyaJ	PouH	RustysBett	HrbrtAmbrs	FtThCptn
Jun24	2	Wbs ^{7/8}	25ft	Nw15000lcd	18000	:27	:56	:1:24	1:51 ²	6	1	5 ^{5 1/2}	4 ^{4 3/4}	4 ^{4 1/2}	4 ^{10 1/2}	6 ^{5 18 1/4}	:28	:28	:28	:30	1:55	1:55	4	25	MacA	PouH	WtchngSnst	WlchHrtly	SansSouci		
4	12-1	Mark Goddard 220 Black-Red-White (16-1-2-2-.173)										Tr: Mark Goddard (273-12-25-46-.150)																			
B JS CHOICE (3, 7/8, 1:56, 1 \$8,126)															William Brown, Hanover, ON																
BREEDER: William Brown, Rick Rier, Hanover, ON															Last 5 Sts - \$2,216																
Last 10 Sts - \$7,816																															
GREEN	B g 3 by Big Jim-Karans Choice-Sportswriter	Last 5 Sts - \$2,216																													
Aug20	7	GeoD ^{5/8}	16ft	Prospect	8000	:28	:58	:1:27	1:55 ³	6	4	6 ^{7 1/2}	5 ^{04 1/2}	6 ^{05 1/2}	5 ^{5 1/2}	8 ²	:30	:28	:29	:29	1:57	1:57	1	1	1	1	FilS	GodM	OnyxBovino	GltrSBg	RiseNGrnd
Aug16	8	Grv ^{5/8}	23gd-1	Nw1r8000l	6600	:27	:56	:1:26	1:55 ⁴	8	3	6 ⁷	5 ^{04 1/4}	x ^{8 13}	8 ⁵	8 ³	:29	:28	:31	:28	1:52	1:52	1	1	1	1	RyaJ	GodM	SmknHtDd	Minotaur	Bobcaygeon
Aug9	7	Grv ^{5/8}	20ft	Nw1r8000l	6600	:28	:58	:1:27	1:56 ²	6	4	6 ^{8 3/4}	6 ^{7 3/4}	5 ^{04 1/2}	4 ^{2 1/2}	4 ^{1 1/4}	:30	:30	:28	:28	1:56	1:56	2	4	RyaJ	GodM	LrjnLkr	BrghtsDms	Minotaur		
Aug2	6	Grv ^{5/8}	25ft	Nw1r8800lcd	6600	:27	:57	:1:25	1:54	6	5	6 ^{9 1/2}	4 ^{9 1/4}	4 ⁰⁸	3 ^{3 1/4}	3 ²	:29	:29	:28	:27	1:54	1:54	1	1	1	1	RyaJ	GodM	BrghtsDms	BbbyBnBrkr	BJSChoice
Jul26	1	Grv ^{5/8}	24ft	Nw4280l	6200	:28	:57	:1:26	1:56	6	2	4 ⁷	4 ⁰⁷	3 ^{3 1/4}	2 ^{1 1/2}	4 ^{2 1/2}	:29	:29	:27	:29	1:52	1:52	3	3	3	3	RyaJ	GodM	AcrtfryHwk	MckslHnvr	BrghtsDms
Jul15	9	Grv ^{5/8}	24ft	Prospect	8000	:26	:54	:1:23	1:53	8	7	8 ^{14 1/4}	8 ¹¹	7 ^{8 1/4}	5 ^{8 3/4}	4 ^{8 1/4}	:28	:27	:28	:29	1:54	1:54	2	2	2	2	RyaJ	GodM	MappoOrley	DAWckdShn	RcktFrgh
5	10-1	Austin Sorrie 163 Blue-Yellow (835-128-91-94-.251)										Tr: Blake Macintosh (470-79-56-62-.278)																			
MACWOW (2, 5/8, 1:58, 2 \$17,022)															Hutt Racing Stable, Malvern, PA																
BREEDER: Winbak Farm, Chesapeake City, MD															Last 5 Sts - \$2,762																
Last 10 Sts - \$4,522																															
BLACK	B g 3 by McWicked-Pleasant Yet Bad-Badlands Hanover LEX-SEL 35,000	Last 5 Sts - \$2,762																													
Jul30	1	GeoD ^{5/8}	22ft	Nw2r17400l	9500	:27	:57	:1:26	1:56 ¹	9	3	7 ⁹	7 ⁰⁶	6 ⁰⁴	6 ^{1 1/2}	7 ⁰⁸	:29	:29	:28	:30	1:57	1:57	1	1	1	1	SorA	MacB	SldNnHnvr	FrrVtr	JmmyWhnrs
Jul23	8	GeoD ^{5/8}	22ft	Nw1r16400l	8900	:28	:57	:1:26	1:55 ³	6	5x	6 ^{8 3/4}	6 ⁵	6 ^{4 1/2}	6 ^{5 1/4}	4 ^{5 1/4}	:29	:30	:28	:29	1:56	1:56	2	2	2	2	ThiD	MacB	HrbrtAmbrs	SldNnHnvr	FtThCptn
Jul15	2	Grv ^{5/8}	24ft	Prospect	8000	:26	:55	:1:25	1:54	8	4	4 ⁵	4 ⁵	6 ^{5 3/4}	6 ⁵	5 ^{9 1/2}	:27	:29	:30	:29	1:55	1:55	3	3	3	3	MaPa	MacB	VgBlChp	JmrSpkAwy	HnlVcnd
Jul6	5	Sar ^{5/8}	23ft	Prospect	8000	:27	:57	:1:26	1:56	8	7	5 ^{06 1/4}	5 ⁷	5 ^{3 1/2}	5 ^{3 1/2}	6 ^{3 3/4}	:28	:31	:28	:29	1:56	1:56	1	1	1	1	DesR	MacB	SweetAleX	Zppnrrppn	RiseNGrnd
Jun28	3	Grv ^{5/8}	19ft	Nw1r8000lcd	6600	:27	:57	:1:26	1:54 ⁴	6	2	2 ^{1 1/2}	2 ^{1 1/2}	2 ²	2 ^{1 1/2}	2 ^{1 1/2}	:28	:30	:28	:28	1:55	1:55	2	2	2	2	MaPa	MacB	DAMagicMike	Macwov	PflsLstShdw
Jun16	3	Clntn	24ft	Prospect	8000	:29	:1:00	:1:29	1:58 ¹	8	7	8 ^{12 3/4}	8 ^{12 1/4}	8 ^{8 1/2}	7 ⁸	5 ^{be 10 1/4}	:32	:30	:28	:29	2:00	2:00	3	3	3	3	MaPa	MacB	BlykDmtr	WldRvvl	Moonwalker
6	9-2	Todd Ratchford Maroon-Grey (580-72-61-76-.226)										Tr: Julie Walker (186-37-31-22-.330)																			
BRIGHTSIDE MASEO (3, 7/8, 1:54, 3 \$13,722)															Darlene Carr, Dundas, ON																
BREEDER: W Terry Fried, Bright, ON															Last 5 Sts - \$7,569																
Last 10 Sts - \$13,722																															
YELLOW	B g 3 by Panther Hanover-Brightside Maude-Modern Art	Last 5 Sts - \$7,569																													
Aug16	7	Grv ⁵																													

6

TROT
1 MILE

\$0.20 TRIFECTA & EXACTA & \$0.20 SUPERFECTA & LATE PICK 5(6-7-8-9-10)
PURSE \$8000. PROSPECT SERIES: 2 YEAR OLD FILLY TROT. LEG 4A. STARTING FEE \$100 CDN.

WARM-UP PAD

PROBABLE FAVOURITES: 4-3-1-2

ASK FOR HORSE BY PROGRAM NUMBER

Date	Track	°C	nd	Var	Class	Purse	1/4	1/2	3/4	Fin	Fld	PP	1/4	1/2	3/4	Str.	Fin.	1/4	L/2	L/4	L/4	Time	Odds	Drv	Trn	First	Second	Third					
1	4-1 MS KIRSI (\$2,400)					Brett Macdonald 135 Burgundy-White-Black (1101-151-154-142-.257)											Tr: Rodney Hughes (48-1-4-8-.122) Howard Taylor,Philadelphia,PA											2024	4	0	0	1	\$2,400
RED	B f 2 by Muscle Mass-Kirsi Hanover-Donato Hanover LEX-SEL 47,000					Breeder: Winbak Farm,Chesapeake City,MD											Last 5 Sts - \$2,400											Last 10 Sts - \$2,400					
Aug13	5	Wbs	7/8	23ft	2f-nw1r8000l	16000	:28 ³	:58 ³	:1:28 ³	:1:57 ³	9	1	1 ^{13/4}	2 ^{11/2}	3 ^{21/2}	7 ⁷	9 ^{161/4}	:28 ³	:30 ¹	:30 ¹	:31 ⁴	2:00 ⁴	6 ¹⁵	JamJ	HuGR	LilyLace	Stovid	Angelic					
Jul30	6	Wbs	7/8	24ft	Onss-rs	20000	:28	:59	:1:28 ¹	:1:57 ⁴	9	7	6 ^{81/2}	4 ^{933/4}	2 ^{933/4}	6 ^{81/2}	8 ^{123/4}	:29 ¹	:30 ³	:29	:31 ³	2:00 ²	14 ¹⁰	JamJ	HuGR	IvyLynn	WimFngrd	Dartford					
Jul16	8	Wbs	7/8	26ft	Onss-rs	20000	:29 ¹	:1:00 ¹	:1:30	:1:58 ¹	7	6	7 ^{101/4}	6 ^{73/4}	6 ^{83/4}	5 ^{81/4}	3 ⁷	:31 ¹	:30 ³	:30	:27 ⁴	1:59 ³	23 ²⁰	JamJ	HuGR	FoxyAmee	RoyalSauce	MsKirsi					
Jul5	1	Wbs	7/8	24gd-1	2f-nw1r5000l	16000	:29 ⁴	:1:01	:1:31 ¹	:2:00	10	4x	5 ^{71/4}	5 ^{71/2}	2 ^{111/2}	4 ^{31/2}	10p9 ⁹	:31 ¹	:31 ¹	:29	:30 ²	2:01 ⁴	14 ⁷⁵	JamJ	HuGR	EntertainMe	Stovid	RichGirl					
Jun28	2	Wbs	7/8	18ft	2yr-f-qua		:30 ²	:1:01 ³	:1:31 ⁴	:2:00 ¹	1	1	4 ^{81/4}	4 ^{83/4}	4 ^{41/2}	4 ⁴	4 ^{41/2}	:31 ³	:31 ²	:29 ³	:28 ²	2:01	nb	McCB	HuGR	ClarissaW	GmMnsJy	BnksAMlln					
Jun13	3	Wbs	7/8	22ft	2yr-f-qua		:31	:1:02	:1:31 ³	:2:00	3	3	3 ^{41/4}	3 ^{31/2}	3 ⁴	3 ¹⁰	6 ^{151/4}	:31 ⁴	:30 ⁴	:29 ⁴	:30 ³	2:03	nb	McCB	HuGR	Monalishi	MagicSix	Dartford					
2	6-1 SOUTHWOLD GEMA (\$2,400)					Garrett Rooney 150 Red-White-Black (951-219-156-153-.375)											Tr: Angela Carroll (129-21-13-23-.278) Garrett Rooney,Angela Carroll,Iona,ON											2024	2	0	1	0	\$2,400
BLUE	B f 2 by Wheeling N Dealin-Las Vegas Seelster-Kadabra					Breeder: Garrett Rooney,Angela Carroll,Iona,ON											Last 5 Sts - \$2,400											Last 10 Sts - \$2,400					
Aug17	1	Sar	5/8	21sy-3	Prospect	8000	:29 ¹	:1:01 ¹	:1:32 ³	:2:04 ⁴	6	4	5 ^{79/4}	5 ⁷	3 ^{31/4}	3 ^{51/2}	2 ^{33/4}	:30 ¹	:31 ⁴	:30 ³	:32 ²	2:05 ³	6 ⁸⁰	RooG	CarA	SweetSwirl	SthwldGm	HwmcGldr					
Aug2	2	Grvr	5/8	25ft	Prospect	8000	:29	:1:00 ¹	:1:30 ¹	:1:59 ¹	7	6	7 ^{141/2}	6 ^{93/4}	6 ¹⁷	5 ¹⁹	5 ^{203/4}	:31 ⁴	:32 ¹	:31 ²	:29 ¹	2:03 ²	24 ⁸⁰	RooG	CarA	ItsNtMyVlt	Hadley	SweetSwirl					
Jul27	2	Sar	5/8	27ft-1	Qua-t&p		:30 ²	:1:02 ⁴	:1:33 ²	:2:03	3	3	3 ^{33/4}	3 ^{31/2}	3 ^{31/2}	3 ⁸	3 ^{33/4}	:31 ¹	:32 ¹	:30 ³	:31	2:05	nb	RooG	CarA	Toretto	SprtyBbb	SthwldGm					
3	3-1 SILVER MANALISHI (\$6,840)					Bruce Richardson Green-Yellow (100-8-13-10-.185)											Tr: Rene Dion (73-16-5-12-.312) ft Q1:59 ⁴ Wbs7/8											2024	6	0	0	0	\$6,840
WHITE	Ro f 2 by Green Manalishi S-Crystal Girl-Angus Hall					Breeder: Silver Stables,Venise-En-Quebec,QC											Last 5 Sts - \$6,840											Last 10 Sts - \$6,840					
Aug15	2	Wbs	7/8	23ft	2fnw1r10000l	16000	:29 ²	:59 ²	:1:29 ¹	:1:58 ¹	6	2	5 ^{51/2}	5 ^{61/4}	5 ⁵	4 ⁷	4 ^{91/4}	:30 ²	:30 ¹	:29 ³	:29 ⁴	2:00	14 ⁴⁵	JamJ	DioR	RoxieHart	RslvIndd	IntrntlVL					
Aug6	7	Wbs	7/8	19ft	Onss-rs	20000	:29	:59 ³	:1:28 ⁴	:1:57 ⁴	9	9x	9 ²²	9 ^{141/4}	8 ^{171/2}	8 ^{231/2}	8p7 ^{303/4}	:33 ²	:29	:29 ⁴	:31 ⁴	2:04	21 ⁴⁰	JamJ	DioR	RichGirl	MarieH	DADreamGirl					
Jul30	5	Wbs	7/8	24ft	Onss-rs	20000	:27 ⁴	:58 ²	:1:28 ⁴	:1:57 ²	9	2	4 ^{33/4}	3 ³	5 ³	4 ^{41/2}	5 ^{53/4}	:28 ³	:30 ²	:30 ²	:29 ¹	1:58 ³	28 ⁰⁰	JamJ	DioR	WellsFargo	RichGirl	EarthaK					
Jul18	5	Wbs	7/8	20ft	2f-nw1r8000l	16000	:29 ³	:58 ⁴	:1:28 ²	:1:57 ¹	9	1	2 ^{13/4}	2 ²	2 ^{21/2}	5 ^{41/4}	6 ^{133/4}	:30	:29 ¹	:29 ³	:31 ¹	2:00	26 ⁰⁰	FilS	TouJ	MdlySlstr	ExqstTst	SprgrMlly					
Jul11	2	Wbs	7/8	22ft	Onss-gl	95000	:28 ³	:58 ²	:1:27 ³	:1:55 ³	7	2	4 ^{31/4}	4 ⁵	5 ^{53/4}	5 ¹⁰	5be ^{163/4}	:29 ¹	:30 ¹	:29 ²	:30 ¹	1:59	13 ⁹⁰	MacJ	TouJ	Monalishi	ExqstTst	LilSweet					
Jul2	4	Wbs	7/8	20ft	2f-nw1r5000l	16000	:30 ²	:1:01 ⁴	:1:31 ³	:1:59 ¹	10	x5	10 ^{141/2}	10 ¹⁵	10 ^{91/2}	10 ^{143/4}	10 ¹⁶	:33 ¹	:31 ³	:28 ³	:29	2:02 ²	5 ⁸⁰	FilS	TouJ	RoxieHart	Brsnshnd	LstngDrm					
Jun21	7	Wbs	7/8	23ft	2yr-f-qua		:31 ¹	:1:01 ¹	:1:30 ⁴	:1:59 ⁴	7	1 ⁵	1 ⁵	1 ⁵	1 ⁵	1 ⁵	1 ⁵	:31 ¹	:30	:29 ³	:29	1:59 ⁴	nb	FilS	TouJ	SvrMnlsh	SprtSlstr	MsvEmtn					
Jun8	6	Wbs	7/8	17ft-1	2yr-f-qua		:32 ¹	:1:03 ²	:1:31 ²	:2:02 ¹	4	2	2 ^{3/4}	2 ^{3/4}	2 ²	4 ^{31/2}	4 ^{41/2}	:32 ³	:31 ¹	:29 ⁴	:29 ²	2:03	nb	FilS	TouJ	Monalishi	ExqstTst	BadenBaden					
4	5-2 TALBOT EHBESEA (\$720)					Samuel Fillion 155 Blue-White (1272-204-205-209-.304)											Tr: Robert Kyle Fellows (570-96-85-87-.302) N Yolanda Fellows,ON-Blair Corbell,AB-Windermere Stable Lic,NY											2024	5	0	0	1	\$720
GREEN	B f 2 by Muscle Mass-Talbot Eh Plus-Kadabra LCYS 64,000					Breeder: Karen Carroll,Shedden,ON											Last 5 Sts - \$720											Last 10 Sts - \$720					
Aug21	5	Grvr	5/8	18ft	2yr-nw1r1ft	6000	:30 ⁴	:1:02	:1:31	:2:00 ⁴	9	7	2 ^{11/2}	2 ^{11/2}	3 ^{31/2}	3 ^{43/4}	3 ⁸	:31	:31 ¹	:29 ²	:30 ⁴	2:02 ²	6 ³⁵	FilS	FelR	MvYrMss	TrtSlstr	TlbtEhbs					
Aug6	7	Wbs	7/8	19ft	Onss-rs	20000	:29	:59 ³	:1:28 ⁴	:1:57 ⁴	9	5	4 ^{51/2}	4 ^{41/2}	5 ^{41/2}	6 ^{63/4}	7p6 ^{121/2}	:30	:30 ²	:29 ¹	:30 ³	2:00 ¹	61 ⁷⁰	McND	FelR	RichGirl	MarieH	DADreamGirl					
Jul16	6	Wbs	7/8	26ft	Onss-rs	20000	:29 ²	:1:01 ¹	:1:30 ⁴	:1:59 ¹	9	6	5 ^{981/4}	8 ^{81/4}	6 ^{951/4}	7 ^{53/4}	8 ^{93/4}	:30 ³	:32 ¹	:29	:29 ²	2:01 ¹	24 ²⁰	JamJ	FelR	CheekyLass	RichGirl	Iblvnnlgs					
Jul2	4	Wbs	7/8	20ft	2f-nw1r5000l	16000	:30 ²	:1:01 ⁴	:1:31 ³	:1:59 ¹	10	6	7 ^{91/2}	7 ^{91/2}	6 ^{43/4}	7x ^{51/2}	x7 ^{71/2}	:32 ¹	:31 ²	:29	:28	2:00 ³	38 ⁵⁰	MacJ	FelR	RoxieHart	Brsnshnd	LstngDrm					
Jun21	2	Wbs	7/8	25ft	2yf-nw1r1ft	16000	:28 ²	:59 ²	:1:29 ³	:1:57 ³	10	6	6 ¹⁰	6 ^{91/4}	6 ^{71/4}	8 ¹²	8p7 ^{151/2}	:30 ²	:30 ⁴	:29 ⁴	:29 ³	2:00 ³	28 ¹⁰	McND	FelR	Telos	BrightGreen	SisterSara					
Jun13	1	Wbs	7/8	22ft	2yr-f-qua		:32 ³	:1:02 ³	:1:31 ²	:2:00 ¹	1	1	3 ³	3 ⁴	3 ^{61/4}	3 ⁴	3 ^{121/2}	:33 ¹	:30 ¹	:29 ¹	:30	2:02 ³	nb	FilS	FelR	ThMonica	VwIFrVnn	TlbtEhbs					
5	8-1 BELVEDERE KATHY (\$0)					Dagfin Henriksen 167 Blue-Red-White (69-5-2-10-.136)											Tr: Dagfin Henriksen (98-10-6-15-.187) ft Q2:08 Trrvs											2024	0	0	0	0	\$0
BLACK	B f 2 by Alarm Detector-First To The Front-Angus Hall					Breeder: Michael Venneri,St Catharines,ON											Last 5 Sts - \$0											Last 10 Sts - \$0					
Aug23	2	Wbs	7/8	22ft	Qua		:31 ²	:1:00 ³	:1:30 ³	:2:01 ⁴	1	2 ^{nk}	1 ^{23/4}	1 ²	2 ²	6 ¹²	:31 ²	:29 ¹	:30	:33 ³	2:04 ¹	nb	HenD	HenD	CheekyLass	UltraMyles	TymEmrld						
Jul21	1	Trrvs	22ft	Qua		:34 ¹	:1:07 ³	:1:41 ³	:2:14 ¹	2x	2 ²⁹	x2dis	2dis	2dis	2 ²⁷	:40	:2:19 ³	nb	AugM	AugM	SivrPrsch	BldrKthty	Mstrpt					BigBank					
Jul14	1	Trrvs	30ft	Qua		:32	:1:03	:1:34 ³	:2:08	4	1 ^{81/2}	1 ¹⁴	1 ²⁷	1 ^{281/2}	1 ^{243/4}	:32	:31	:31 ³	:33 ²	:2:08	nb	AugM	AugM	BldrKthty	HwmcGldr			Gwandalina					
Jul6	1	Trrvs	22ft-1	2yr-qua		:32 ⁴	:1:05 ²	:1:38 ²	:2:10	1	3 ⁵	3 ⁶	2 ^{71/2}	2 ⁶	2 ^{71/2}	:33 ⁴	:32 ⁴	:33 ¹	:31 ³	:2:11 ²	nb	AugM	AugM	MscldHrs	BldrKthty			Gwandalina					
6	10-1 J M CELEBRITY (\$1,200)					Daryl Thiessen 171 Black-Blue-White (857-119-127-114-.265)											Tr: Steve Watson (51-9-8-5-.296) Steve Watson,Guelph,ON											2024	4	0	0	0	\$1,200
YELLOW	B f 2 by Trixton-Charlotte Chaplin-Chapter Seven LCYS 12,000					Breeder: R K Joe Miskokomon,Muncey,ON											Last 5 Sts - \$1,200											Last 10 Sts - \$1,200					
Aug17	1	Sar	5/8	21sy-3	Prospect	8000	:29 ¹	:1:01 ¹	:1:32 ³	:2:04 ⁴	6	1	4 ^{49/4}	4 ^{51/4}	5 ⁵	5 ^{91/4}	5 ^{101/2}	:30 ¹	:32	:31 ²	:33 ¹	2:06 ⁴	9 ⁵⁰	ThiD	WatS	SweetSwirl	SthwldGm	HwmcGldr					
Aug7	4	Grvr	5/8	24ft	2yr-qua		:31	:1:02 ³	:1:34	:2:03 ³	2	2	4 ^{41/2}	6 ^{83/4}	4 ^{951/4}	3 ^{51/4}	3 ^{31/4}	:31 ⁴	:32 ³	:30 ³	:29 ³	2:04 ³	nb	ThiD	WatS	AnglFlyAwy	CasualGuy	JMCelebrity					
Aug2	2	Grvr	5/8	25ft	Prospect	8000	:29	:1:00 ¹	:1:30 ¹	:1:59 ¹	7	2	x3 ^{5</}																				



station earthTM
TOTAL HOME TECHNOLOGIES



• Audio • Video • Shading • Lighting www.stationearth.com

RW

**Ron Wilkin
Jewellers**

Est. 1967



109 St. Andrew Street West Fergus, ON | 519-843-1225

48 West Mill Street Elora, ON | 226-384-1225

info@ronwilkinjewellers.com

www.ronwilkinjewellers.com



TREVOR HENRY STABLES INC

IN IT TO WIN


519-820-6434
Arthur, Ontario



At RLB, Communities Count.

Our Experts Provide:

- Accounting Services
- Business Advisory Services
- Business Valuations
- Succession & Estate Planning
- Tax Planning
- HR Consulting
- IT Consulting

 519.822.9933

Learn more at rlb.ca

7

TROT
1 MILE

\$0.20 TRIFECTA & EXACTA & LATE PICK 4(7-8-9-10)

PURSE \$8000. PROSPECT SERIES: 2 YEAR OLD FILLY TROT. LEG 4A. STARTING FEE \$100 CDN.

WARM-UP PAD

PROBABLE FAVOURITES: 5-2-3-1

ASK FOR HORSE BY PROGRAM NUMBER

Date	Track	CCndVar	Class	Purse	1/4	1/2	3/4	Fin	Fld	PP	1/4	1/2	3/4	Str.	Fin.	1/4	L1/2	L3/4	L1/4	Time	Odds	Drv	Trn	First	Second	Third		
1 8-1 ANGEL FLY AWAY Jean Bernard Renaud Green-Black-White (118-17-15-12-.248) Tr: Julie Walker (186-37-31-22-.330) ft Q2:03 Grvr ^{5/8} 2024 1 0 0 0 \$0																												
RED B f 2 by Archangel-Pine Knolls-Yankee Glide Tr: Leonard Gamble, Etobicoke, ON Last 5 Sts - \$0 Last 10 Sts - \$0																												
Aug14	7	Grv ^{5/8}	24ft	Nw1r5000lcd	6500	:28 ³	:59 ²	1:28 ²	1:58 ²	7	1	x6dis	6dis	7dis	7dis	1 ⁵	1 ⁴ / ₄	:31	:31 ³	:31 ²	:29 ³	2:03 ³	8 ⁵⁵ RenJ	WalJ	TrstrCrnm	ChpHppnd	EyOfAnEgl	\$0
Aug7	4	Grv ^{5/8}	24ft	2yr-qua		:31	1:02 ⁴	1:34	2:03 ³		5	1 ¹ / ₂	1 ² / ₄	1 ³	1 ⁵							nb RenJ	WalJ	AnglFlyAwy	CasualGuy	JMCelebrity	\$0	
2 9-5 SWEET SWIRL Dave Boughton 148 Blue-Yellow-White (22-2-1-4-.176) Tr: Donald Lindsey (125-14-13-20-.223) ft Q2:02 Grvr ^{5/8} 2024 5 1 1 2 \$7,895																												
BLUE B f 2 by Muscle Mass-Ms Paige-Andover Hall HBG 16,000 Breeder: Winbak Farm, Chesapeake City, MD Last 5 Sts - \$7,895 Last 10 Sts - \$7,895																												
Aug17	1	Sar ^{5/8}	21sy ¹⁻³	Prospect	8000	:29 ¹	1:01 ¹	1:32 ³	2:04 ⁴	6	6	1 ¹ / ₄	1 ³ / ₄	1 ¹ / ₂	1 ⁵	1 ³ / ₄	:29 ¹	:32	:31 ²	:32 ¹	2:04 ⁴	6 ³⁵ HauA	LinD	SweetSwirl	SthwldGm	HwmcGldr	\$0	
Aug2	2	Grv ^{5/8}	23ft	Prospect	8000	:29	1:00 ¹	1:30 ¹	1:59 ¹	7	7	1 ¹ / ₂	1 ¹ / ₂	1 ¹ / ₄	2 ¹ / ₂	3 ³ / ₄	:29	:31 ¹	:30	:29 ³	1:59 ⁴	9 ³⁵ BouD	LinD	ItsNtMyVlt	Hadley	SweetSwirl	\$0	
Jul23	2	GeoD ^{5/8}	22ft	Prospect	8000	:30 ⁴	1:01 ¹	1:31 ¹	2:00 ³	5	5	1 ¹ / ₄	1 ¹ / ₂	1 ¹ / ₂	2h	3 ¹ / ₄	:30 ⁴	:30 ²	:30	:29 ⁴	2:01	3 ⁷⁵ BouD	LinD	ItsNtMyVlt	DADreamGirl	SweetSwirl	\$0	
Jul16	1	Wbs ^{7/8}	26ft	Onss-rs	20000	:29	:59	1:28	1:57 ³	9	4	7 ¹² / ₁₆	6 ¹¹ / ₁₆	4 ⁹⁸ / ₁₆	3 ¹⁰ / ₁₆	6 ¹¹ / ₁₆	:31 ²	:30	:28 ¹	:30 ¹	1:59 ⁴	38 ²⁰ BouD	LinD	ThMonica	EarthaK	BnksAMlln	\$0	
Jun29	4	GeoD ^{5/8}	25gd ¹⁻¹	Nw1r5000lcd	7900	:31 ³	1:00 ²	1:29 ³	2:00 ¹	8	7	5 ⁴ / ₄	5 ¹⁰ / ₄	4 ⁸	3 ⁴ / ₂	3p2 ⁷ / ₄	:32 ³	:29 ⁴	:28 ⁴	:30 ³	2:01 ⁴	35 ⁸⁵ BouD	LinD	TwstOfTbby	SweetSwirl	FstAsLghtng	\$0	
Jun19	8	Grv ^{5/8}	31ft	2yr-qua		:30 ²	1:02	1:32	2:02		1	1 ⁴ / ₄	1 ² / ₄	1 ²	1 ⁴ / ₄	1 ⁵ / ₄	:30 ²	:31 ³	:30	:30	2:02	nb BouD	LinD	SweetSwirl	GrscScrt		\$0	
Jun12	1	Grv ^{5/8}	23ft	2yr-qua		:32 ¹	1:03 ³	1:32 ⁴	2:01 ³		3	3 ³ / ₂	2x ²	7dis	6dis	6dis	:32 ⁴	:31 ¹				nb BouD	LinD	CvIndRylyt	DoubleArch	TlrsChc	\$0	
Jun5	1	Grv ^{5/8}	23ft	Qua		:30 ¹	1:01	1:31 ⁴	2:01		1x	4 ¹⁸	4 ²¹	4 ¹⁸	4 ²³	4 ³¹	:34	:31 ¹	:30 ¹	:31 ⁴	2:07 ¹	nb BouD	LinD	Veracruz	HeyDude	BadLiB	\$0	
3 6-1 VOWEL FOR VANNA Bruce Richardson Green-Yellow (100-8-13-10-.185) Tr: John Holding (49-3-7-8-.195) 2024 5 0 0 0 \$1,000																												
WHITE B f 2 by Resolve-Harlequin Seelster-Duke Of York Breeder: Bax Stable, Campbellville, ON Last 5 Sts - \$1,000 Last 10 Sts - \$1,000																												
Aug15	8	Wbs ^{7/8}	23ft	2fnw1r10000l	16000	:29 ²	:59 ⁴	1:30	1:58 ²	7	4x	7 ¹³ / ₁₆	7 ⁹ / ₁₆	5 ⁵ / ₁₆	6 ¹² / ₁₆	6 ¹³ / ₁₆	:32	:29 ³	:29 ²	:31 ¹	2:02 ¹	75 ³⁵ BaxM	BaxM	ClarissaW	EngmBvn	PmcssDrm	\$0	
Aug6	1	Wbs ^{7/8}	19ft	Onss-rs	20000	:29	1:00 ³	1:30 ¹	1:58 ⁴	7	5	6 ⁸	6 ¹⁰ / ₁₆	6 ⁷ / ₁₆	6 ¹⁰ / ₁₆	6 ¹¹	:30 ³	:32	:29 ¹	:29 ¹	2:01	42 ⁶⁰ RatT	BaxM	WngsOfGrn	GreenGlider	AllStrAngl	\$0	
Jul30	7	Wbs ^{7/8}	24ft	Onss-rs	20000	:29 ¹	1:00	1:30 ¹	1:58 ⁴	8	1	3 ³ / ₄	3 ³ / ₂	3 ² / ₂	6 ⁶ / ₁₆	6 ⁸ / ₁₆	:29 ³	:31	:30 ¹	:29 ³	2:00 ²	27 ⁶⁰ RatT	BaxM	CoreResolve	SisterSara	Alarming	\$0	
Jul16	8	Wbs ^{7/8}	26ft	Onss-rs	20000	:29 ¹	1:00 ¹	1:30	1:58 ¹	7	7	1 ⁰ / ₁	2 ¹	2 ⁰ / ₁	3 ⁵ / ₁₆	5 ¹³ / ₁₆	:29 ¹	:31 ¹	:29 ⁴	:30 ³	2:00 ⁴	16 ⁰⁰ RatT	BaxM	FoxyAmees	RoyalSauce	MsKirsi	\$0	
Jul2	4	Wbs ^{7/8}	20ft	2f-nw1r5000l	16000	:30 ²	1:01 ⁴	1:31 ³	1:59 ¹	10	8	8 ¹¹	8 ¹¹	8 ⁹ / ₁₆	9 ¹¹ / ₁₆	9 ¹²	:32 ³	:31 ²	:29 ²	:28 ¹	2:01 ³	60 ⁹⁰ RatT	BaxM	RoxieHart	Brsnsnshnd	LstngDrm	\$0	
Jun13	1	Wbs ^{7/8}	22ft	2yr-f-qua		:32 ³	1:02 ³	1:31 ²	2:00 ¹		2	2 ¹ / ₂	2 ²	2 ⁴ / ₂	2 ² / ₂	2 ⁹ / ₁₆	:32 ⁴	:30 ¹	:29 ¹	:29 ⁴	2:02	nb RatT	BaxM	ThMonica	VwFrVnn	TlbtEnbs	\$0	
4 10-1 ROYAL ME Lorne House 159 Black-Grey-White (462-61-72-78-.274) Tr: Cassidy Schneider (493-68-64-46-.241) 2024 2 0 0 0 \$640																												
GREEN B f 2 by Royalty For Life-Whole Lot Of Sugar-Windsong Espoir Dr: Steve Taylor, Kitchener, ON Last 5 Sts - \$640 Last 10 Sts - \$640																												
Aug17	1	Sar ^{5/8}	21sy ³	Prospect	8000	:29 ¹	1:01 ¹	1:32 ³	2:04 ⁴	6	3	2 ¹ / ₄	2 ³ / ₄	2 ¹ / ₂	2 ⁵	4 ⁹ / ₁₆	:29 ²	:32 ¹	:31 ¹	:33 ¹	2:06 ³	15 ⁹⁰ HouL	SchC	SweetSwirl	SthwldGm	HwmcGldr	\$0	
Aug10	6	GeoD ^{5/8}	18ft	Nw1r5000lcd	8500	:29 ²	:59 ³	1:29 ¹	1:59 ³	7	1	7 ¹⁰	7 ⁹	7 ¹⁰	7 ¹⁴	7 ²² / ₁₆	:31 ²	:30	:29 ⁴	:32 ⁴	2:04	32 ⁴⁵ ByrS	SchC	PCPeterbilt	GIMHandsome	WhtHvldn	\$0	
Jul31	5	Grv ^{5/8}	29ft	Qua		:30 ²	1:02	1:31	2:00		3	2 ¹ / ₄	2 ³ / ₄	4 ⁰ / ₂	3 ¹⁶	4 ²⁴	:30 ⁴	:31 ³	:31	:31 ²	2:04 ⁴	nb HouL	SchC	PCPeterbilt	AllStrAngl	Fishmsmgn	\$0	
Jul24	4	Grv ^{5/8}	27ft	2yr-qua		:31 ¹	1:02 ³	1:31	2:03 ²		1	2 ² / ₂	2 ³	x5dis	5dis	5dis	:31 ³	:31 ³				nb HouL	SchC	AllStrAngl	MvYrMss	Nightingale	\$0	
5 8-5 ITS NOT MY VAULT Colin Kelly 164 Orange-Black-White (766-121-103-106-.278) Tr: Kim Baxter (3-3-0-0-.1000) ft 1:59 ¹ Grvr ^{5/8} 2024 3 3 0 0 \$12,000																												
BLACK B f 2 by The Bank-Moms Apple Pie-Striking Sahbra LCYS 22,000 Breeder: Winbak Farm, Chesapeake City, MD Last 5 Sts - \$12,000 Last 10 Sts - \$12,000																												
Aug2	2	Grv ^{5/8}	25ft	Prospect	8000	:29	1:00 ¹	1:30 ¹	1:59 ¹	7	3	5 ⁸	4 ⁴ / ₂	2 ⁰ / ₄	1 ¹ / ₂	1 ³ / ₄	:30 ³	:30 ²	:29 ¹	:29	1:59 ¹	6 ¹⁰ KelC	BaxK	ItsNtMyVlt	Hadley	SweetSwirl	\$0	
Jul23	2	GeoD ^{5/8}	22ft	Prospect	8000	:30 ⁴	1:01 ¹	1:31 ¹	2:00 ³	5	4	3 ³ / ₄	3 ³	3 ³	1h	1 ¹	:31 ²	:30 ²	:30	:28 ⁴	2:00 ³	6 ⁵⁰ KelC	BaxK	ItsNtMyVlt	DADreamGirl	SweetSwirl	\$0	
Jul12	2	Grv ^{5/8}	24gd ¹⁻¹	Prospect	8000	:31 ²	1:03 ¹	1:33 ²	2:02 ³	6	4	4 ⁶ / ₂	4 ⁶	2 ⁰ / ₂	2 ¹ / ₄	1 ^{nk}	:32 ³	:31 ⁴	:29 ²	:28 ⁴	2:02 ³	6 ⁷⁵ KelC	BaxK	ItsNtMyVlt	HwmcGldr	Shsmnlsh	\$0	
Jul3	1	Grv ^{5/8}	26ft	2yr-qua		:30 ³	1:04 ¹	1:35	2:04 ²		4	2 ²	2 ³ / ₄	1 ³ / ₄	1 ⁶	1 ³	:31	:33 ³	:30 ²	:29 ²	2:04 ²	nb KelC	BaxK	ItsNtMyVlt	PCChthch	JMCelebrity	\$0	
Jun26	1	Grv ^{5/8}	25ft	2yr-qua		:30 ³	1:03 ¹	1:33	2:04 ³		5	4 ⁵ / ₄	3 ³ / ₄	3 ⁴ / ₂	3 ³ / ₄	2 ⁹ / ₄	:31 ³	:32 ³	:29 ³	:31	2:04 ⁴	nb KelC	BaxK	BankOnLucas	ItsNtMyVlt	SeemeZoom	\$0	
Jun21	7	Wbs ^{7/8}	23ft	2yr-f-qua		:31 ¹	1:01 ¹	1:30 ⁴	1:59 ⁴		3	6 ¹² / ₁₆	6 ¹⁵ / ₁₆	6 ²¹	6 ¹⁸	7 ²⁸ / ₁₆	:33 ³	:30 ³	:30 ⁴	:30 ³	2:05 ³	nb RoyL	BaxK	StvrMnlsh	SprtSistr	MssvEmtn	\$0	

VOWEL FOR VANNA Trainer Change: Matthew Bax to John J Holding



PACE
1 MILE

\$0.20 TRIFECTA & EXACTA & \$0.20 SUPERFECTA & LATE PICK 3(8-9-10)
PURSE \$6500. FILLIES & MARES -NW \$3,610 LAST 3. AE: OPT. CLAIMING \$15,000 (W-ALL) OR NW
\$5,670 L3 TO DRAW OUTSIDE.

WARM-UP PAD

PROBABLE FAVOURITES: 2-4-8-3

ASK FOR HORSE BY PROGRAM NUMBER

Table with columns: Date, Track, Cnd, Var, Class, Purse, 1/4, 1/2, 3/4, Fin, Fld, PP, 1/4, 1/2, 3/4, Str., Fin., 1/4, L1/2, L3/4, L1/4, Time, Odds, Drv, Trn, First, Second, Third. Rows include race details for programs 1-8, listing horses like FEAR THE CRUSH, WATCH HER DEWITT, SWEET GADGETS, VOOM VOOM, EXOTIC DRAGON, TREASURES WATCHING, FATED FIRE, and DUCHENNE.



Deborah Keeble

519 855 6444

519 803 7168

keebed@gmail.com

ediblepromotions.ca

Edible Promotions

ediblepromotions

Show your good taste!



Wellington County
Lymphedema & Post Surgical Massage

181 St Andrew St E. Fergus N1M 1P9 | 519.831.1160

BREADALBANE INN
BOUTIQUE HOTEL • ITALIAN RESTAURANT • GASTRO PUB



LAUREN ROY
FOUNDER

Boutique.
ENTERTAINMENT

647.444.5769

WWW.BOUTIQUEENTERTAINMENT.CA

HELLO@BOUTIQUEENTERTAINMENT.CA

@BOUTIQUE.ENTERTAINMENT



sarahanthon.c21.ca

Thank you to everyone who has made a donation to Harness the Hope tonight. If you wish to still donate, you may do so at grandriverraceway.com/harness-the-hope/ or scan the QR code:



Things people don't tell you about your friend having cancer.

It's annoying.

When people say, what are we going to do, you will feel pretty useless. It's not like you can do the surgery yourself (I mean, unless you're a surgeon I guess)...

People from the community will ask you for their address. Always offer to pick whatever it is up and drop it off - you never know, it might be something good! This does not last forever.

You can use their cancer to get out of things.

The first few days of no hair - it's distracting. Despite that, don't tell them to wear a hat.

Asking them to run an errand for you while they're in the city for an appointment is a very kind gesture if you think about it and makes them feel useful.

No matter how hard you try, you won't be able to come up with an answer for why this happened. It's not their job to manage your feelings on this - they have enough to manage. Seriously, a whole binder of things, maybe even a spreadsheet.


They might forget to tell you updates such as, I have a surgery date. It's not on purpose.

You have no excuse though and are supposed to keep them in the loop on your life updates. Even if they can't process them in that moment. Consider starting a newsletter.

Continue to invite them to things; be very understanding but also act totally shocked when they can't make it.

It's helpful for them if they have different people for different things - a person they can be angry with, sad with, optimistic with, pragmatic with, quiet with, "normal" with, make dark jokes with, etc.. Sometimes though they require you to step outside your lane(s) - you've never felt more pressure than in those moments. Treat yourself if you nail it.

There is no such thing as "back to normal".

love you Gids 

Donated and written by Sally Litchfield, Katie Giddy's bestie

ASK FOR HORSE BY PROGRAM NUMBER

Table with columns: Date, Track, Cnd, Var, Class, Purse, 1/4, 1/2, 3/4, Fin, Fld, PP, 1/4, 1/2, 3/4, Str, Fin., 1/4, L1/2, L3/4, L1/4, Time, Odds, Drv, Trn, First, Second, Third. Rows include race details for horses like BOZAK, MCSEASHORE, SNOWPORT, TORQUE DELIGHT, RED MENACE, MADEWRITE, WICKED ENDING, ACEFORTYFOURBEAVER, and DONTPLAYWITHFIRE.

10

PACE
1 MILE

\$0.20 TRIFECTA & EXACTA & \$0.20 SUPERFECTA & DAILY DOUBLE (Races 10 and 11)
PURSE \$8000. HORSES & GELDINGS - N/W 2 RACES OR \$30,000 LIFETIME (W-ALL). AE: NW \$2,250 L3
TO DRAW OUTSIDE.

WARM-UP PAD

PROBABLE FAVOURITES: 1-5-3-4

ASK FOR HORSE BY PROGRAM NUMBER

Date	Track	°C	nd	Var	Class	Purse	¼	½	¾	Fin	Flt	PP	¼	½	¾	Str.	Fin.	¼	L½	L¾	L¼	Time	Odds	Drv	Trn	First	Second	Third
1	2-1 WATCHING SUNSET (3, ¼, 1:51 ² , 3 \$42,341) Tr: Craig Barss (31-4-3-7-.258) ft 1:51 ² Wbs ^{7/8} 2024 13 3 0 2 \$35,660 185 Green-White-Gold (565-70-76-75-.242) Tr: Gino Toscani, Mount Hope (159-29-22-14-.288) ft 1:52 ⁴ Wbs ^{7/8} 2023 4 0 1 0 \$6,681 Breeder: Nurko Sokolovic, Waterloo, Craig Barss, Cobourg, ON Last 5 Sts - \$3,550 Last 10 Sts - \$25,500 B c 3 by Hes Watching-Midnight Jet-Jeremes Jet																											
Aug24	12	Wbs ^{7/8}	23	ft	Nw2r34750lcd	19000	:27	:57 ⁴	1:25 ²	1:52 ³	8	1	6 ⁶	5 ⁹⁴ / ₁₆	3 ⁹ / ₁₆	4 ¹ / ₂	8 ¹⁰	:28 ¹	:29 ⁴	:27 ¹	:28 ⁴	1:54 ²	16 ²⁵	McND	BarC	McPleasant	PmrfFrstStr	LikeAGlove
Aug5	7	Gvr ^{5/8}	20	ft	Onss-rs	20000	:27 ¹	:56 ¹	1:23 ⁴	1:51 ⁴	9	5	5 ⁷	5 ⁹⁶	4 ⁹² / ₁₆	4 ³ / ₁₆	4 ³ / ₁₆	:28 ³	:28 ⁴	:26 ⁴	:28 ¹	1:52 ¹	2 ⁶⁵	MacB	LenA	LakersBank	AlvnsAThrll	McPleasant
Jul27	8	Wbs ^{7/8}	24	ft	Nw2r30000lcd	19000	:27	:55	1:23 ³	1:50 ³	8	7	8 ¹¹	8 ¹⁰³ / ₁₆	8 ⁵³ / ₁₆	8 ⁶ / ₁₆	5 ¹ / ₂	:29 ¹	:28	:27 ³	:26 ³	1:51 ²	22 ⁴⁰	JamJ	BarC	TheVicar	CntryKmd	PmrfFrstStr
Jul19	4	Wbs ^{7/8}	22	ft	Onss-rs	20000	:28	:56 ¹	1:24	1:50 ³	8	8	8 ¹⁵ / ₁₆	8 ¹¹³ / ₁₆	8 ¹⁰ / ₁₆	7 ¹⁰³ / ₁₆	5 ⁸ / ₁₆	:31	:27 ³	:27 ²	:26 ¹	1:52 ¹	20 ⁵	JamJ	BarC	ChainGang	CntryKmd	Gtgygtygty
Jul13	8	Wbs ^{7/8}	26	ft	Nw2r30000lcd	19000	:26 ⁵	:55 ⁴	1:23 ¹	1:50 ⁴	8	2	4 ⁵	4 ⁹⁴ / ₁₆	3 ⁹ / ₁₆	3 ¹ / ₁₆	7 ⁹ / ₁₆	:27 ³	:29	:27	:28 ¹	1:51 ⁴	8 ⁶⁵	McND	BarC	BstNightEvr	PmrfFrstStr	LousWorld
Jul1	2	Wbs ^{7/8}	24	ft	Nw15000lcd	18000	:26 ²	:55	1:23	1:51 ⁴	9	2	3 ¹ / ₂	4 ²³ / ₁₆	1 ⁰ / _{nk}	1 ³ / ₂	1 ¹ / ₄	:26 ³	:29	:27 ²	:28 ⁴	1:51 ⁴	5 ⁴⁵	CuIT	BarC	WtchgSnst	WlchHrtly	Chesterman
2	10-1 IM A CAPTAIN (3, ¼, 1:52 ¹ , 4 \$21,663) Tr: Ashley Lendvoy (159-29-22-14-.288) ft 1:52 ⁴ Wbs ^{7/8} 2024 13 1 0 3 \$18,103 135 Burgundy-White-Black (1101-151-154-142-.257) Tr: Gino Toscani, Mount Hope (159-29-22-14-.288) ft 1:51:58 ² Pht ^{5/8} 2023 5 0 0 0 \$3,560 Breeder: Jeffrey Snyder, New York, NY Last 5 Sts - \$2,200 Last 10 Sts - \$14,860 B g 3 by Captaintreachous-Michelles Power-Camluck HBG 115,000																											
Aug16	2	Gvr ^{5/8}	23	gd-1	Nw2r17000l	7500	:28	:55 ⁴	1:24 ³	1:53 ⁴	7	2	2 ¹ / ₂	3 ²	3 ³	3 ³	4 ³ / ₁₆	:28 ¹	:28	:29	:29 ¹	1:54 ²	4 ¹⁵	HeTs	LenA	TimelyBet	BrightSdms	ImACaptain
Aug9	8	Gvr ^{5/8}	20	ft	Nw2r15000l	7500	:27 ⁴	:56 ¹	1:24 ¹	1:54 ²	7	6	1 ¹	2 ¹ / ₂	3 ²	3 ¹ / ₂	3 ³ / ₁₆	:28 ³	:29	:28 ⁴	:29 ¹	1:52 ¹	2 ⁶⁵	MacB	LenA	AllBttsOnRd	VncnsBlChp	ImACaptain
Aug2	7	Gvr ^{5/8}	25	ft	Nw2r37800l	8000	:26 ²	:55 ³	1:24 ¹	1:52 ³	6	4	4 ⁵ / ₁₆	4 ⁵	6 ⁵ / ₁₆	6 ⁴ / ₁₆	5 ⁴	:27 ²	:29 ¹	:28 ³	:28 ¹	1:53 ²	30 ⁴⁵	MacB	LenA	WldDchHldy	OnyxBovino	ArznJcksn
Jul12	6	Gvr ^{5/8}	24	ft	Nw2r30000l	8000	:27 ⁵	:55 ³	1:25	1:54	8	4	3 ³	4 ¹ / ₂	4 ¹ / ₂	4 ³ / ₁₆	7 ¹⁰	:28 ¹	:28 ¹	:28 ⁴	:30 ¹	1:56	9 ⁸⁰	HeTs	LenA	WldDchHldy	DnckEhskppr	FilyWtchr
Jul1	2	Wbs ^{7/8}	24	ft	Nw12000lcd	18000	:26 ⁵	:55 ⁴	1:23	1:51 ⁴	9	4	4 ⁷	7 ⁹⁵ / ₁₆	6 ⁸ / ₁₆	7 ¹¹ / ₁₆	7 ¹³	:27 ²	:29 ²	:28 ¹	:30 ¹	1:54 ²	27 ³⁰	FilS	LenA	WtchgSnst	WlchHrtly	Chesterman
Jun24	2	Wbs ^{7/8}	25	ft	Nw15000lcd	18000	:27 ¹	:56	1:24 ¹	1:51 ²	6	3	6 ⁷	6 ⁸³ / ₁₆	5 ⁶	6 ¹¹	5 ⁴ / ₁₆	:28 ³	:29 ¹	:27 ³	:28 ⁴	1:54 ¹	11 ²⁰	FilS	LenA	WtchgSnst	WlchHrtly	SansSouci
3	3-1 SOUTHWIND INFUSION (3, ¼, 1:52 ¹ , 4 \$25,245) Tr: Ashley Lendvoy (159-29-22-14-.288) ft 1:53 ² Gvr ^{5/8} 2024 20 4 4 0 \$25,245 163 Blue-Yellow (835-128-91-94-.251) Tr: Gino Toscani, Mount Hope (159-29-22-14-.288) ft 1:53:02 ⁹ Fimd 2023 0 0 0 0 \$0 Breeder: Southwind Farms Llc, Pennington, NJ Last 5 Sts - \$6,150 Last 10 Sts - \$9,930 B g 3 by Always B Miki-Southwind Inertia-Captaintreachous LEX-SEL 52,000																											
Jul26	6	Gvr ^{5/8}	24	ft	Nw2r30000lcd	8000	:26 ¹	:56 ¹	1:24	1:52 ¹	6	6	3 ³	2 ⁰ / _{nk}	2 ⁰ / ₁₆	4 ³ / ₁₆	6 ⁶ / ₁₆	:27 ²	:28 ⁴	:27 ⁴	:29 ⁴	1:53 ¹	33 ⁸⁰	SorA	LenA	PrnCntrl	OnyxBovino	DAMcDreamy
Jul19	6	Gvr ^{5/8}	20	ft	Nw2r30000lcd	8000	:27	:56 ¹	1:24	1:53 ¹	7	2	5 ⁷ / ₁₆	5 ⁸ / ₁₆	5 ⁵	5 ⁵	6 ⁶	:28 ³	:29	:27 ³	:29 ¹	1:52 ¹	11 ⁰⁰	LaGB	LenA	HrbtAmbrs	RJRingo	StyClHnvr
Jul12	6	Gvr ^{5/8}	24	ft	Nw2r30000l	8000	:27 ⁵	:55 ³	1:25	1:54	8	7	7 ⁹ / ₁₆	6 ⁹ / ₁₆	4 ⁹ / ₁₆	5 ³ / ₁₆	5 ⁸	:29 ³	:27 ⁴	:28 ¹	:30	1:55 ³	20 ⁹⁰	HarJ	LenA	WldDchHldy	DnckEhskppr	FilyWtchr
Jul5	2	Gvr ^{5/8}	25	ft	Nw2r30000l	8000	:27 ¹	:56 ³	1:25	1:53 ²	5	1	2 ¹ / ₂	2 ¹ / ₂	3 ¹ / ₂	2 ²	2 ^h	:27 ²	:29 ²	:28 ²	:28 ¹	1:53 ²	2 ⁰	SorA	LenA	OnyxBovino	SthwldInfsn	DnckEhskppr
Jun28	9	Gvr ^{5/8}	19	ft	Nw17500lcd	7500	:27	:56 ¹	1:24 ⁴	1:53 ²	9	5	2 ² / ₁₆	2 ¹ / ₂	2 ¹ / ₂	2 ¹ / ₂	2 ^h	:28 ²	:29	:28 ³	:28 ¹	1:53 ²	32 ⁵⁵	SorA	LenA	SthwldInfsn	StyClHnvr	GltdrSbg
Jun21	5	Gvr ^{5/8}	25	ft	Nw2r31250l	8000	:27 ³	:57 ²	1:26	1:54	7	2	5 ⁷ / ₁₆	5 ⁶ / ₁₆	4 ⁹ / ₁₆	4 ³ / ₁₆	4 ⁶ / ₁₆	:29	:29 ³	:28	:28 ³	1:55 ¹	7 ⁹ / ₁₆	HeTs	LenA	StLdsCrmnl	FilyWtchr	MaxPatrick
4	4-1 GANDALF THE BAY (3, ¼, 1:53, 2 \$25,846) Tr: Paul Ritchie (49-7-8-10-.301) ft 1:53 Wbs ^{7/8} 2024 18 2 1 4 \$25,846 170 Green-White (1131-164-181-150-.278) Tr: Paul Ritchie, Mono (49-7-8-10-.301) gd Q2:09 ⁹ Fimd 2023 0 0 0 0 \$0 Breeder: Steven Chinni, Neptune, NJ Last 5 Sts - \$12,560 Last 10 Sts - \$16,625 B g 3 by Lazarus N-Seaside Shadow-Shadow Play HBG 27,000																											
Aug17	12	Wbs ^{7/8}	22	ft	Nw2r31500lcd	19000	:27 ⁵	:57 ²	1:25 ¹	1:52	9	2	4 ⁴ / ₁₆	5 ⁵ / ₁₆	7 ⁶ / ₁₆	6 ⁶ / ₁₆	5 ³ / ₁₆	:28 ²	:30	:28	:26 ²	1:52 ¹	67 ³⁵	HudP	RitP	McPleasant	TheVicar	LakersBank
Aug10	12	Wbs ^{7/8}	19	ft	Nw2r30000lcd	19000	:27	:55 ¹	1:23 ³	1:52	8	2	3 ² / ₁₆	4 ⁵ / ₁₆	4 ⁴ / ₁₆	4 ⁶ / ₁₆	6 ² / ₁₆	:28 ³	:29	:27 ³	:28 ¹	1:52 ¹	11 ⁰⁰	HudP	RitP	Alrtlrtrt	WlchHrtly	BlOnSnshn
Aug3	3	Wbs ^{7/8}	26	ft	Nw2r36500lcd	19000	:27 ⁴	:55 ⁴	1:24	1:52 ²	9	5	3 ² / ₁₆	4 ⁸ / ₁₆	6 ⁵ / ₁₆	7 ⁵ / ₁₆	5 ² / ₁₆	:28 ¹	:29 ¹	:27 ³	:27 ⁴	1:52 ⁴	34 ⁸⁰	HudP	RitP	PmrfFrstStr	BoldSpirit	BlOnSnshn
Jul27	3	Wbs ^{7/8}	24	ft	Nw24500lcd	18000	:27	:56 ⁴	1:24 ¹	1:51	8	5	3 ³ / ₁₆	4 ⁹	4 ³ / ₁₆	4 ³ / ₁₆	3 ³ / ₁₆	:27 ⁴	:29 ³	:27 ³	:27	1:52	25 ⁰⁵	HudP	RitP	LikeAGlove	WlchHrtly	GndfThBy
Jul16	5	Wbs ^{7/8}	26	ft	Nw1r7500lcd	17000	:28 ²	:56 ²	1:24 ²	1:53	10	6	1 ³ / ₁₆	2 ¹ / ₁₆	1 ³ / ₁₆	1 ³ / ₁₆	1 ⁴ / ₁₆	:28 ²	:28 ²	:27 ³	:28 ¹	1:53	3 ⁵⁰	HudP	RitP	GlndfThBy	PrtStChrls	SmlsFrMls
Jul9	1	Wbs ^{7/8}	25	ft	Nw1r7500lcd	17000	:27 ³	:56 ²	1:25	1:51 ⁴	9	4	4 ³ / ₁₆	4 ⁴ / ₁₆	4 ³ / ₁₆	4 ⁶ / ₁₆	4 ⁴	:28 ¹	:29 ¹	:28 ²	:26 ⁴	1:52 ³	37 ⁴⁰	HudP	RitP	McPleasant	MelsLegacy	Gansbaai
5	5-2 CHESTERMAN L (3, ¼, 1:54, 1 \$26,240) Tr: Anthony Beaton (293-60-49-42-.345) gd 1:54 Wbs ^{7/8} 2024 12 1 2 3 \$26,240 170 Light Blue-White (1415-245-235-218-.316) Tr: Domenic Chiaravalle, Teresa Davidson, Cantucky Farm, Inc (462-61-72-78-.274) 2023 0 0 0 0 \$0 Breeder: David Willmot, King City, Clay Harland Homer, Toronto, ON Last 5 Sts - \$3,840 Last 10 Sts - \$16,200 B c 3 by Bettors Delight-Wickaninish-Somebeachsomewhere LCYS 72,000																											
Aug24	11	Wbs ^{7/8}	23	ft	Nw23750lcd-L	18000	:26 ⁴	:54 ²	1:22 ²	1:50 ²	8	7	1 ² / ₁₆	1 ¹ / ₂	1 ^h	4 ³ / ₁₆	7 ⁹	:26 ⁴	:27 ³	:28	:29 ⁴	1:52 ¹	12 ¹⁰	HeTr	BeaA	FsnchtHnvr	AClssYnk	CnAssnss
Aug17	12	Wbs ^{7/8}	22	ft	Nw2r31500lcd-L	19000	:27 ⁵	:57 ¹	1:23 ¹	1:52	9	8	5 ⁶ / ₁₆	4 ⁴ / ₁₆	3 ⁹² / ₁₆	7 ¹ / ₁₆	9 ¹ / ₁₆	:28 ³	:33 ²	:27 ³	:28 ¹	1:54 ¹	17 ⁰⁰	FilS	BeaA	McPleasant	TheVicar	LakersBank
Aug5	8	Gvr ^{5/8}	25	ft	Onss-rs-L	20000	:26	:55	1:22 ⁴	1:51 ¹	9	5	9 ⁰ / ₁₀	6 ⁴ / ₁₆	3 ⁹ / ₁₆	3 ¹ / ₁₆	3 ²	:28	:28	:27 ¹	:28 ¹	1:51 ³	38 ⁵⁵	HeTr	BeaA	TheVicar	SprtsActvr	Chesterman
Jul19	2	Wbs ^{7/8}	22	ft	Onss-rs-L	20000	:26 ⁵	:55	1:23 ²	1:51 ²	9	2	5 ⁵ / ₁₆	4 ⁹	5 ⁹	8 ⁸ / ₁₆	9 ¹¹ / ₁₆	:27 ⁴	:28 ²	:28 ²	:29	1:53 ¹						

PICTURE US

— Photo & Video Experience Creators —

Providing unforgettable experiences to weddings, social functions, corporate events, and brand activations in South-Western Ontario.



: (519) 578- 0925



: pictureuskw@gmail.com



: pictureus_kw



: Picture Us

More information
www.pictureus.ca



Tonight's photobooth sponsored in
memory of Theresa Schnarr

October 14, 1964 - April 6, 2009

11

PACE
1 MILE

\$0.20 TRIFECTA & EXACTA & SUPER HI-5
PURSE \$4500. HORSES & GELDINGS - CLAIMING \$8,000. (W-ALL)

WARM-UP PAD

PROBABLE FAVOURITES: 1-2-9-6

ASK FOR HORSE BY PROGRAM NUMBER

Date	Track	°C	nd	Var	Class	Purse	1/4	1/2	3/4	Fin	Flt	PP	1/4	1/2	3/4	Str.	Fin.	1/4	L1/2	L3/4	L1/4	Time	Odds	Drv	Trn	First	Second	Third
1	9-5	CL \$8000	Garrett Rooney	150 Red-White-Black (951-219-156-153-375)	Tr: Michelle Sherman (111-11-17-23-253)	gd 1:55 ³ Grv ⁵ / ₈	2024	17	2	5	1	\$14,439																
	MILITARY SECRET L (4, 7/8, 1:50 ² , 25 \$243,602)	Sean Downey, Strathroy, ON	ft 1:50 ³ Wbs ⁷ / ₈	2023	22	8	1	2	\$54,300																			
RED	B g 8 by Captaintreachous-Turnofftheights-Jennas Beach Boy LEX-SEL 45,000	Breeder: Riverview Breeding Lic, FL-Visionary Breeders Linc, Minisk Farms Linc, NJ	Last 5 Sts - \$5,725	Last 10 Sts - \$11,739																								
Aug24	7 Sar ⁵ / ₈ 25ft	8000clmcd-L	4000 :28 :58 ⁴ :1:26 ³ :1:55 ²	7	5	5 ⁷	2 ⁹ / ₁₆	2 ¹⁰ / ₁₆	2 ¹⁵ / ₁₆	2 ⁴ / ₈	:29 ¹ :29 ³ :27 ² :29 ¹ :1:55 ³	6 ³⁵ HouL	SheM	Lin/Large	MltrySort	PrrzHnvr												
Aug16	4 Grv ⁵ / ₈ 23gd-1	8000clmcd-L	4500 :27 ¹ :56 ¹ :1:25 ³ :1:55 ³	7	7	1 ⁹ / ₁₆	1 ¹¹ / ₁₆	1 ¹³ / ₁₆	1 ¹⁴ / ₁₆	:29 ¹ :29 ² :29 ² :30 ¹ :1:55 ³	6 ³⁰ RaIT	SheM	MltrySort	Absc	VryBlChp													
Aug9	9 Grv ⁵ / ₈ 20ft	8000clmhp-L	7000 :28 ² :58 :1:26 ³ :1:55 ³	8	7	8 ¹⁰	8 ⁹	7 ⁷ / ₁₆	6 ⁶ / ₁₆	6 ⁸ / ₁₆	:30 ² :29 ² :28 ¹ :29 ¹ :1:57 ¹	6 ⁶⁵ HalS	SheM	Chrgprh	AboutABoy	Parsons												
Jul27	11 Sar ⁵ / ₈ 27ft	8000clmcd-L	3800 :27 ² :56 ⁴ :1:24 ⁴ :1:54 ³	8	5	2 ¹ / ₁₆	3 ¹ / ₁₆	3 ² / ₁₆	2 ¹ / ₁₆	:27 ³ :29 ³ :28 :29 ³ :1:54 ⁴	6 ¹³⁵ DesR	SheM	FearTheDice	MltrySort	Lin/Large													
Jul20	7 GeoD ⁵ / ₈ 23ft	8000clm-L	6100 :29 ² :58 ² :1:26 ⁴ :1:55 ³	7	3	4 ⁴ / ₁₆	4 ³	2 ⁹ / ₁₆	2 ⁹ / ₁₆	:30 ² :28 ³ :28 ¹ :29 :1:56 ¹	1 ⁹⁰ HeTs	SheM	MachSilver	MltrySort	DreamyFella													
2	5-2	CL \$10000	Lorne House	159 Black-Grey-White (462-61-72-78-.274)	Tr: Riley Simpson (91-10-9-15-.219)	ft 1:55 ⁴ Grv ⁵ / ₈	2024	29	2	1	4	\$14,739																
	MIKI BURKE (4, 5/8, 1:55 ⁴ , 4 \$26,670)	Shen Guo, Waterloo, ON	ft 1:57 ⁴ Stga	2023	10	2	2	0	\$11,931																			
BLUE	B g 4 by Always B Miki-Sweet Paprika-Artiscape HBG 120,000	Breeder: Walnridge Farm Inc, Cream Ridge, Sherri Meirs, Creamridge, NJ	Last 5 Sts - \$1,895	Last 10 Sts - \$3,755																								
Aug24	3 Sar ⁵ / ₈ 25ft	8000clmcd	3800 :28 ¹ :58 ⁴ :1:27 ² :1:56 ³	6	3	5 ⁹	4 ⁹	5 ⁴ / ₁₆	5 ⁵ / ₁₆	5 ^{dh} / ₁₆	:30 :29 ² :28 ⁴ :29 ³ :1:57 ⁴	2 ³⁰ DoyR	SimR	NorthernSpy	BtrThnCsh	SnrAdvsr												
Aug17	12 Sar ⁵ / ₈ 21gd-2	Op10000clm	4800 :27 ³ :58 ¹ :1:27 ⁴ :1:56 ³	9	9	8 ¹³ / ₁₆	8 ¹⁰ / ₁₆	7 ¹¹ / ₁₆	8 ²² / ₁₆	8 ²⁵ / ₁₆	:30 ² :29 ⁴ :30 :31 ² :2:01 ⁴	4 ²⁰⁰ RyAJ	SimR	ThrdTmLcky	CldBrClng	GrystinChO												
Aug3	4 Sar ⁵ / ₈ 23gd-1	Op10000clm	4500 :27 ¹ :56 ³ :1:25 ³ :1:54 ²	8	4	7 ¹² / ₁₆	7 ¹¹ / ₁₆	7 ¹³ / ₁₆	7 ¹³ / ₁₆	:29 ¹ :29 ⁴ :28 ³ :30 ¹ :1:59 ¹	9 ¹⁰ RaDJ	SimR	lshhdmm	SpeakOrWar	GrystinChO													
Jul27	10 Sar ⁵ / ₈ 27ft	8000clmcd	3600 :28 ¹ :59 ¹ :1:28 :1:57 ⁴	8	4	5 ⁸ / ₁₆	3 ³	2 ⁰ / ₁₆	2 ^{nk}	1 ^{ns}	:30 ² :29 ² :28 ¹ :29 ¹ :1:57 ⁴	6 ³⁰ HouL	SimR	MikiBurke	ThLnRngr	SandWalker												
Jul17	10 Grv ⁵ / ₈ 20ft	2000clmcd	6200 :27 ² :55 ⁴ :1:24 ³ :1:54 ³	9	3	8 ¹¹ / ₁₆	7 ⁹	7 ⁵ / ₁₆	8 ⁷ / ₁₆	7 ⁸	:29 ² :28 ¹ :28 :30 ³ :1:56 ¹	8 ³⁰ DesR	SimR	AlddnLc	IaintNoMack	EslyThBst												
3	12-1	CL \$8000	Todd Ratchford	Maroon-Grey (580-72-61-76-.226)	Tr: Boyd Wilson (89-5-12-14-.183)	ft 1:53 Wbs ⁷ / ₈	2024	24	1	5	1	\$14,446																
	LIL RED SPORTSSTAR (6, 7/8, 1:53, 5 \$62,469)	Harold Wilson, Guelph, ON	ft 1:56 ⁴ Flmd	2023	20	3	3	3	\$19,687																			
WHITE	B g 6 by Sportswriter-Rambaran Star-Rambaran	Breeder: Dan & Kim Sergeant, Stratfordville, ON	Last 5 Sts - \$1,004	Last 10 Sts - \$2,966																								
Aug24	3 Hnvr 26ft	8000clmcd	3500 :27 ⁴ :57 ² :1:28 ⁴ :1:59 ²	8	2	6 ⁶ / ₁₆	6 ⁴	5 ³	3 ⁴ / ₁₆	3 ⁷ / ₁₆	:29 :29 ¹ :31 ¹ :31 ² :2:00 ¹	6 ² DruJ	WiLB	RdRnncly	StythrtyDV	LIRdSprsrr												
Aug17	5 Hnvr 23sy-3	8000clmcd	3500 :28 ² :58 ³ :1:30 ² :2:01 ⁴	7	8	6 ¹⁰	6 ⁷ / ₁₆	6 ⁴ / ₁₆	4 ³ / ₁₆	4 ⁵ / ₁₆	:30 ³ :29 ² :31 ¹ :31 ³ :2:02 ⁴	8 ⁴⁵ DesR	WiLB	StLdsMschf	MstrFncr	RdRnncly												
Aug11	1 Clntr 20ft	8000clmcd	3600 :29 :1:00 ² :1:30 ³ :2:01 ³	8	6	3 ³ / ₁₆	3 ³ / ₁₆	5 ⁴	5 ³ / ₁₆	4 ⁶ / ₁₆	:29 ⁴ :31 ² :30 ¹ :31 ² :2:02 ⁴	4 ⁷⁰ DesR	WiLB	KsllBtr	SkyVlcty	PynFrPrs												
Aug4	8 Clntr 27ft	8000clmcd	3800 :28 ¹ :57 ³ :1:28 ² :1:58 ²	8	3	4 ⁴ / ₁₆	4 ⁴ / ₁₆	6 ⁰⁵	4 ⁴ / ₁₆	4 ⁷ / ₁₆	:28 ³ :30 :30 ⁴ :30 ⁴ :1:59 ¹	7 ¹⁵ DesR	WiLB	HghwyVgbdn	MysrDvc	KsllBtr												
Jul30	4 GeoD ⁵ / ₈ 22ft	8000clmcd	5800 :28 ² :56 ³ :1:25 ² :1:55	6	2	5 ⁶	5 ⁹ / ₁₆	5 ⁹ / ₁₆	6 ⁹	6 ¹⁴ / ₁₆	:29 ³ :28 ⁴ :28 ⁴ :30 ⁴ :1:58	11 ⁴⁵ HeTs	WiLB	Crosscut	CriKlkr	PrrctlyBl												
4	15-1	CL \$8000	Paul MacKenzie	160 Red-Black-White (592-43-82-71-.189)	Tr: Candice Morel (53-5-2-5-.146)	ft 1:58 ¹ Flmd	2024	24	0	2	0	\$3,825																
	BOOTS N BRIAN (5, 5/8, 1:55 ⁴ , 12 \$102,023)	Candice Morel, Caledonia, ON	ft 1:58 ¹ Flmd	2023	35	2	5	5	\$17,683																			
GREEN	B lg k 11 by Vintage Master-Jos Peach Pie-Northern Luck	Breeder: Candice Morel, Caledonia, ON	Last 5 Sts - \$630	Last 10 Sts - \$880																								
Aug3	6 GeoD ⁵ / ₈ 28ft	8000clmcd	5800 :29 ³ :59 ² :1:29 ¹ :1:59	7	4	6 ⁶	6 ⁵ / ₁₆	6 ⁰³	5 ⁴	6 ⁸ / ₁₆	:30 ² :29 ³ :29 ³ :30 ⁴ :2:00 ⁴	4 ¹⁵⁵ SalM	MoRc	DapperFella	ArtstcPck	KeepItDirty												
Jul27	4 GeoD ⁵ / ₈ 26ft	8000clmcd	5800 :28 ¹ :58 ¹ :1:27 ¹ :1:56	6	6	6 ⁷ / ₁₆	6 ⁸ / ₁₆	6 ⁶ / ₁₆	6 ⁷ / ₁₆	6 ⁶ / ₁₆	:30 :29 ³ :29 ² :30 ¹ :1:59	2 ⁶⁵ SalM	MoRc	Crosscut	ArtstcPck	PrrctlyBl												
Jul19	7 Grv ⁵ / ₈ 20ft	8000clmcd	4200 :26 ¹ :57 :1:25 ⁴ :1:55 ²	8	6	5 ⁴ / ₁₆	5 ⁸ / ₁₆	7 ⁰⁷	7 ⁸ / ₁₆	8 ⁹ / ₁₆	:27 ⁴ :30 ² :29 :30 :1:57 ¹	5 ⁸⁰ SalM	MoRc	FrThShdw	VryBlChp	KnkdSlstr												
Jul13	8 GeoD ⁵ / ₈ 27ft	8000clmcd	5250 :28 :57 ³ :1:26 ² :1:56 ¹	8	2	6 ⁶	5 ⁵	4 ⁶ / ₁₆	3 ⁷ / ₁₆	4 ¹ / ₁₆	:29 ¹ :29 ² :29 :30 ⁴ :1:58 ²	18 ⁹⁵ SalM	MoRc	DreamyFella	TmStndStll	PssntPnc												
Jun29	3 GeoD ⁵ / ₈ 25gd-1	8000clmcd	5250 :27 ¹ :57 :1:27 :1:59 ¹	6	scratched - vet(sick)	scratched - vet(sick)	scratched - vet(sick)	scratched - vet(sick)	scratched - vet(sick)	scratched - vet(sick)	scratched - vet(sick)	scratched - vet(sick)	scratched - vet(sick)	scratched - vet(sick)	scratched - vet(sick)	scratched - vet(sick)	scratched - vet(sick)	scratched - vet(sick)	scratched - vet(sick)									
5	8-1	CL \$12000	Travis Henry	170 Light Blue-White (1415-245-235-218-.316)	Tr: Boyd Wilson (89-5-12-14-.183)	ft 1:53 DD ⁵ / ₈	2024	23	3	2	3	\$30,780																
	VERY BLUE CHIP (3, 3/8, 1:53 ⁴ , 4 \$39,165)	Owen Wilson, Ferguson, ON	ft 1:56 ³ Phl ⁵ / ₈	2023	6	1	1	0	\$8,385																			
BLACK	B g 3 by Heston Blue Chip-Abes Lady-Somebeachsomewhere HBG 11,000	Breeder: Best Bet Stables Llc, Boca Raton, FL	Last 5 Sts - \$4,615	Last 10 Sts - \$5,299																								
Aug24	1 Hnvr 26ft	8000clmcd	3800 :29 ¹ :1:00 :1:30 ¹ :1:59 ¹	8	4	2 ^{ns}	1 ¹	1 ¹	1 ² / ₁₆	1 ² / ₁₆	:29 ² :30 ³ :30 ¹ :29 :1:59 ¹	6 ⁵⁰ DruJ	WiLB	VryBlChp	JstClMPT	BrngYrFr												
Aug16	4 Grv ⁵ / ₈ 23gd-1	8000clmcd-L	4500 :27 ¹ :56 ¹ :1:25 ³ :1:55 ³	7	2	2 ⁴	2 ¹ / ₁₆	2 ¹ / ₁₆	2 ¹ / ₁₆	2 ¹ / ₁₆	:27 ² :29 :29 ² :30 ² :1:56 ¹	10 ²⁵ KelC	WiLB	MltrySort	Absc	VryBlChp												
Aug10	9 GeoD ⁵ / ₈ 18ft	8000clmcd-L	4800 :28 ¹ :57 ³ :1:27 :1:58 ¹	9	3	1 ¹ / ₁₆	1 ¹ / ₁₆	2 ^h	3 ¹ / ₁₆	6 ⁴ / ₁₆	:27 ³ :30 :29 ² :32 :1:59 ¹	10 ¹⁰ RyAJ	WiLB	Briggs	GoMud	AcfrtyZs												
Aug2	9 Grv ⁵ / ₈ 25ft	8000clm-L	4500 :26 ¹ :55 :1:24 ³ :1:55 ³	7	6	1 ³ / ₁₆	1 ⁸ / ₁₆	1 ⁴	1 ⁴	2 ^{be} / ₁₆	:26 ⁴ :28 ¹ :29 ³ :31 :1:55 ³	10 ³⁵ KelC	WiLB	Absc	VryBlChp	FstyLkFr												
Jul19	7 Grv ⁵ / ₈ 20ft	8000clmcd-L	4200 :28 ¹ :57 :1:25 ⁴ :1:55 ²	8	3	1 ²	1 ³ / ₁₆	1 ¹	1 ¹ / ₁₆	2 nd	:26 ⁴ :30 ¹ :28 ⁴ :29 ³ :1:55 ²	5 ⁷⁵ HeTs	WiLB	FrThShdw	VryBlChp	KnkdSlstr												
6	4-1	CL \$8000	Austin Sorrie	163 Blue-Yellow (835-128-91-94-.251)	Tr: Ashley Lendvoy (159-29-22-14-.288)	ft 1:56 ¹ Grv ⁵ / ₈	2024	19	3	1	1	\$18,773																
	ABOUT A BOY (7, 1:53 ² , 24 \$172,937)	Ashley Lendvoy, Hamilton, Dayna White, Troy, ON	ft 1:56 ¹ Grv ⁵ / ₈	2023	6	0	3	2	\$4,914																			
YELLOW	B g 10 by Dali-Beauty Delight-Bettors Delight	Breeder: Paul Bernard, Saint-Hyacinthe, QC	Last 5 Sts - \$4,848	Last 10 Sts - \$12,262																								
Aug16	4 Grv ⁵ / ₈ 23gd-1	8000clmcd	4500 :27 ¹ :56 ¹ :1:25 ³ :1:55 ³	7	3	5 ⁵ / ₁₆	5 ⁶	4 ⁹	4 ³ / ₁₆	4 ³ / ₁₆	:28 ² :29 :28 ⁴ :30 ¹ :1:56 ²	6 ¹⁵ HeTs	LenA	MltrySort	Absc	VryBlChp												
Aug9	9 Grv ⁵ / ₈ 20ft	8000clmhp	7000 :28 ² :58 :1:26 ³ :1:55 ³	8	5	2 ¹ / ₁₆	3 ¹ / ₁₆	3 ² / ₁₆	2 ² / ₁₆	2 ²	:28 ³ :29 ³ :28 ⁴ :29 :1:56	6 ⁶⁵ OueA	LenA	Chrgprh	AboutABoy	Parsons												
Aug2	9 Grv ⁵ / ₈ 25ft	8000clm	4500 :26 ¹ :55 :1:24 ³ :1:55 ³	7	7	7 ¹³	7 ¹⁴ / ₁₆	7 ⁸	7 ⁵	6 ² / ₁₆	:29 ² :28 ² :28 ² :30 :1:56 ¹	13 ⁹⁵ HeTs	LenA	Absc	VryBlChp	FstyLkFr												
Jul23	10 Wbs ⁷ / ₈ 23ft	8500clmhp	8000 :27 ² :56 ¹ :1:25 :1:52 ³	9	scratched - vet(sick)	scratched - vet(sick)	scratched - vet(sick)	scratched - vet(sick)	scratched - vet(sick)	scratched - vet(sick)	scratched - vet(sick)	scratched - vet(sick)	scratched - vet(sick)	scratched - vet(sick)	scratched - vet(sick)	scratched - vet(sick)	scratched - vet(sick)	scratched - vet(sick)										
Jul13	4 GeoD ⁵ / ₈ 27ft	8000clm	6100 :28 ⁴ :57 ⁴ :1:27 ¹ :1:56 ⁴	5	3	2 ²	2 ¹																					

Grand River Drivers by Wins June 5, 2024 - Aug. 26, 2024

DRIVERS	minimum of 17 starts				MONEY	URS	WIN
	Sts	1st	2nd	3rd			
Henry Travis J	211	41	37	39	255,753	.3533	19%
Ryan Jason D	201	32	38	30	251,768	.3140	16%
Macdonald Brett A	174	27	27	25	181,718	.2893	16%
Sorrie Austin	119	20	11	13	110,952	.2558	17%
Harris J Bradley	150	18	29	26	150,015	.2852	12%
Haughan Anthony P	139	17	17	19	113,679	.2358	12%
Ratchford Todd	70	17	9	7	82,450	.3476	24%
Kelly Colin	96	15	8	9	90,372	.2338	16%
Cullen Travis A	58	13	7	5	79,609	.3199	22%
Coulter Scott	138	11	18	20	99,016	.2005	8%
Fillion Samuel	99	10	18	18	89,652	.2626	10%
Mcclure Bob	28	10	3	5	105,865	.4762	36%
Moore Tyler	63	10	10	3	68,696	.2628	16%
Young Scott R	71	10	6	9	82,841	.2300	14%
Hudon Steven	60	9	4	12	56,008	.2537	15%
Roy Louis-philippe	25	7	4	3	75,597	.4089	28%
Jamieson Jody C	19	6	5	3	183,819	.5146	32%
Macdonald James A	26	6	4	2	186,485	.3419	23%
Renaud Jean Bernard	43	5	7	5	37,393	.2455	12%
Rooney Garrett L	47	5	7	7	39,413	.2388	11%
Hensley Ed F	18	4	4	1	23,120	.3642	22%
Hudon Phillippe	42	4	9	5	41,278	.2540	10%
Thiessen Daryl	54	4	6	6	31,991	.1728	7%

Grand River Trainers by Wins June 5, 2024 - Aug. 26, 2024

TRAINERS	minimum of 17 starts				MONEY	URS	WIN
	Sts	1st	2nd	3rd			
Lendvov Ashley	51	14	5	6	64,340	.3682	27%
Dupont Marie Helene	24	11	7	2	77,600	.6481	46%
Bossence Kyle J	35	9	3	6	59,261	.3619	26%
Walker Julie A	52	9	10	5	55,693	.3120	17%
Cullen Jodie M	46	8	5	6	49,107	.2778	17%
Etsell Mark G	18	8	1	0	79,189	.4753	44%
Mcnaire R Gregg	32	7	6	6	73,649	.3854	22%
Toscani Laura	48	7	3	8	43,192	.2361	15%
Beaton Anthony B	28	6	5	6	131,290	.3849	21%
Moreau Richard	29	6	4	3	33,804	.3180	21%
Steaey Shawn F	40	6	9	10	67,668	.3583	15%
Boyd Rod V	18	5	2	3	24,485	.3951	28%
Crone Meg J	30	5	2	4	34,664	.2481	17%
Holliday David L	18	5	2	2	27,139	.3765	28%
Libby Jason A	17	5	2	1	23,294	.3791	29%
Fellows Robert Kyle	30	4	9	6	86,043	.3667	13%
Ratchford Mary M	22	4	5	3	25,733	.3535	18%
Dupuis Matthew D	42	3	6	7	35,297	.2063	7%
Fritz Dale W	17	3	7	1	21,474	.4248	18%
Goddard Mark A	41	3	4	8	27,169	.1924	7%
Hollingsworth Benjamin	27	3	4	5	26,643	.2551	11%
Horner Michael A	28	3	4	2	22,525	.2103	11%
Kwietniowski Michael J	25	3	6	4	25,457	.3067	12%

Winning Post Positions June 5, 2024 - Aug. 26, 2024

	Pace								
	1	2	3	4	5	6	7	8	9
Starts	234	234	234	234	232	220	176	97	83
Wins	47	26	23	37	50	26	14	3	8
Win%	20.1	11.1	9.8	15.8	21.6	11.8	8.0	3.1	9.6

	Trot								
	1	2	3	4	5	6	7	8	9
Starts	103	103	103	103	103	99	78	50	39
Wins	13	14	14	19	19	13	3	5	3
Win%	12.6	13.6	13.6	18.4	18.4	13.1	3.8	10.0	7.7



Winning Favourite June 5, 2024 - Aug. 26, 2024

Races	337		1	2	3	4	5	6	7	8	9	
Favourites or co-Favourites	342		-	-	-	-	-	-	-	-	-	
Favourites finishing 1st	166	48.5%	1/2	166	36	43	46	29	11	4	2	0
Favourites finishing 2nd	60	17.5%	%	49.3	10.7	12.8						
Favourites finishing 3rd	45	13.2%	3/4	192	60	44	22	11	4	4	0	0
Favourites finishing 4th - 11th	71	20.8%	%	57.0	17.8	13.1						

Winning Trips

June 5 to Aug. 26, 2024. Includes 337 races. Table shows the position of the winner at 1/2 and 3/4 points. Percentages not indicated for 4th through 9th as not all races had full fields.

Pari-mutuel wagering is conducted by:
Woodbine Entertainment Group

Racing is Conducted by:

Grand River Raceway Corporation

7445 Wellington County Rd. 21
Elora, ON • N0B 1S0
Admin: (519) 846-5455
Email: info@grandriverraceway.com
Web: www.grandriverraceway.com

Grand River Raceway Corporation

Chair D. Whale
Director C. Lindsay
Director B. Ross
Director K. Giddy
Director I. Scott
Director D. Key

Racing Officials

Associate Judge John Dorion
Associate Judge Larry Hughes
Associate Judge Matthew Gregory
Associate Judge
Track Veterinarian P. Meyers D.V.M
Race Secretary Jim Gillespie
Race Office C. Pattison
Starter M. Strome
Paddock Judge L. Jackson
Charter R. Cudmore
Announcer G. Guy
Photographer Tiffany Chantel Photography (519-889-1049)

Management Team

Raceway Manager J. MacDonell
Vice President - Operations K. Giddy
Vice President - Finance I. Scott
Facilities Manager D. McCaig
Human Resources Manager R. Edmondson

A.G.C.O.

Chair D. Forestell
Vice Chair P. Sloyan
Member H. Reinhart
Member N. Desai
Member D. McLarty
Member C. Vaccarino

AGCO ADMINISTRATION

CEO & Registrar Dr. K. Schnarr
Chief Operating Officer D. Phillips
Deputy Chief Operating Officer J. Locke
Director Regulatory Compliance - Racing Operations K. Cunningham
Director Regulatory Compliance - Racing Operations J. Wannamaker
Senior Manager Racing T. Durand
Manager Racing D. Morretti
Senior Manager, Veterinarian Services Dr. A. Chambers
Manager Veterinarian Services P. Chesterfield

First Turn Printing

The Official Program is published each racing day by First Turn Printing Office: 12 Dawson Road, Unit 3 Orangeville, Ontario, Canada. L9W 2W2. Telephone (519) 938-1523. © 2023 First Turn Printing. All rights reserved. Material printed herein may not be reproduced, retransmitted, or stored in any data retrieval system without the written permission of the copyright owners. Opinions expressed and information published herein are not to be construed as encouragement to wager. Every effort is made to ensure the accuracy of the information contained herein but First Turn Printing and the racing association cannot accept any responsibility for loss or inconvenience attributed to errors or omissions.

Children

Children are welcome at Grand River Raceway, but must be under adult supervision at ALL times.

Program Policy – Grand River Raceway 'live' racing programs only:

If less than 5 races have run, guests may exchange the program for another 'live' program. The actual canceled program must be presented for exchange. No refunds.

If 5 or more races have run, there will be no exchange.

General Operations

Supervision of the pari-mutuel betting and drug control services is provided by the Canadian Pari-Mutuel Agency (CPMA), a division of Agriculture Canada. All pools are calculated and distributed in accordance with these Regulations. All tickets should be held until the result of the race is declared official. No minor shall purchase or cash a pari-mutuel ticket. Approximate odds represent the probable pay-out price of the win pool at the time they are posted and have no bearing on the pay-out price for any other pool. Where approximate odds for any horse are posted as "1-9", the pay-out price based on a \$2 bet on the win pool may be as low as \$2.10. All tickets should be kept until the result of the race is declared official. No ruling made by the Judges or the Alcohol And Gaming Commission of Ontario (AGCO) with regard to distribution of purse money or the placing of horses in the order of finish, after the race has been declared official shall have any bearing on the pay-out prices or distribution of pari-mutuel pools. In the case of foreign separate pool betting, the rules of racing are those of the governing body that regulates the race.

Cancellation Policy

In the event that cancellation of races should result for any reason after four races have been run, no refunds or issuance of rain checks will be made. If a cancellation results before the completion of four races, and upon producing the day's Official Program at the seller's booth, a next day's racing program will be exchanged.

Refunds

Subject to the provisions of the Federal Regulations, all monies bet in all pools on a race are refunded in the event that the race is canceled, declared off, declared no contest or postponed beyond the racing card for which it was scheduled. Subject to the Regulations, all monies bet on a horse are refunded if the horse is a late scratch or does not receive a fair start. Where a horse that is part of an entry is a late scratch and at least one horse of that entry or mutual field starts in the race, all tickets purchased on that entry or mutual field remain valid, and the purchase price of any such ticket shall not be refunded.

Fair Start

The starter shall have control of the horses from the formation of the post parade until a start has been determined. For purpose of this rule, the determination of the start is when the horses have passed the starting point and have been released by the starter. 22.03 (h) There shall be no recall after the horses have been released by the starter. 22.03 (i) The starter shall endeavour to get all horses away in position and on gait. The starter shall only sound a recall for the following reasons: (i) A horse scores ahead of the starting gate; (ii) There is interference before the horses have reached the starting point; (iii) A horse has broken equipment, which the starter notices; (iv) A horse falls before the starting point; (v) A horse coming to the starting gate in the wrong position; (vi) A malfunction of the starting gate or in the interests of safety. 22.03 (l) If a horse has not reached the Fair Start Pole when the horses are released at the starting point by the starter, the judges shall cause the "inquiry" sign to be displayed immediately.

Breaking Rule

When a horse breaks from its gait in a race the driver shall: (a) take the horse to the outside of other horses where clearance exists and; (b) properly attempt to pull the horse to its gait; (c) lose ground while on the break. If there has been no violation of (a), (b) or (c) above, the horse shall not be set back unless a contending horse on its gait is lapped on the hind quarter of the breaking horse at the finish, however, notwithstanding the foregoing, if interference caused by another driver(s) or horse(s) has caused the horse to be on a break at the finish, the judges may, in their discretion determine not to set the horse back even if a contending horse on its gait is lapped on the hind quarter of the breaking horse at the finish. The judges may set any horse back one or more places if, in their judgment, any of the above violations have been committed, or if the horse goes on an extended break, and the driver may be penalized.

Entry or Field in an Exacta

Exacta pools on races that have an entry (1 and 1A and/or 2 and 2B) or mutual field (14f, 15f...) will not offer a wager combining both halves of the same betting interest (ie. 1-1, 2-2, field-field). If the same betting interest finishes first and second, the exactor payout will be on those horses finishing first and third.

Daily Double & Late Double Betting

Where the daily double feature is operated, the daily double is a betting transaction in which the purchaser of a ticket undertakes to select the winners of each of the two races specified for the daily double and that if the purchaser of a daily double ticket fails to pick the winner of the first half of the daily double his bet is void and that all tickets in the second half of the daily double not coupled with the declared official winner of the first half of the daily double are void no matter what circumstances might affect the programmed running of the second half of the daily double. The daily double is operated as an entirely separate pool and is not affected by wagering in other pools operated on the daily double races. Should a horse or horses (not coupled with a starter) be excused from starting in the second race of the daily double after the first race of the daily double has been declared official, holders of all daily double tickets on such horses, coupled with the winner of the daily double race, shall participate in the Consolation Double pool.

Exacta Betting

Where the exacta feature is operated, the exacta is a betting transaction in which the purchaser of a ticket undertakes to select the first two horses to finish, in the exact order of finish, in the race on which the feature is operated.

Trifecta Betting

A Trifecta bet is a betting transaction in which the purchaser of a ticket undertakes to select the first three horses representing different betting interests to finish, in the exact official order of finish, in the race on which the feature is operated.

Superfecta Betting

A Superfecta bet is a betting transaction in which the purchaser of a ticket undertakes to select the first four horses representing different betting interests to finish, in the exact official order of finish, in the race on which the feature is operated.

Super Hi-5 Betting

The Super Hi-5 wager is a betting transaction in which the purchaser of a ticket undertakes to select the first five horses representing different betting interests to finish, in the exact official order of finish, in the race on which the feature is operated. In the event no one correctly selects all five winners in order, 100 per cent of the net pool will be carried over to the next Super Hi-5 race.

Pick-3 or Pick-4 Betting

The Pick 3 & Pick 4 bets are betting transactions in which a purchaser of a ticket undertakes to select the official winners of each of three or four successive races specified for the Pick 3 & Pick 4 respectively. Winning tickets for the Pick 3 & Pick 4 are determined in the following sequence: A) winners of all legs, B) most winners, then refund. If there is a change of surface in any leg that is NOT made known to the public prior to wagering for that pool closing, that leg will pay on all runners. If there are no winners in any leg of a pool, the entire pool is refunded.

Pick 5 Betting

The Pick 5 bet is a betting transaction in which a purchaser of a ticket undertakes to select the official winners of each of five successive races specified for the Pick 5 respectively. If no one has correctly selected all 5 winners, the entire net pool is carried over to the next available Pick 5.

Pick 3, Pick 4 & Pick 5 Scratches

In the event a Pick 3, Pick 4 or Pick 5 ticket designates as a selection a horse which is scratched, excused or determined by the Stewards/Judges to be a non-starter in any of the races comprising the Pick 3, Pick 4 or Pick 5 the favourite, as evidenced by the amount wagered in the win pool at the time of the start of the race in which the scratch occurred, will be substituted for the non-starting selection. In the event that the money bet in the win pool for two or more favourites is identical, the selection with the lowest program number shall be substituted for the non-starting selection. However, if a scratch occurs in any leg of the Pick 3, Pick 4 or Pick 5 pools before the pool is closed, a ticket including the scratched horse may be cancelled.

Pari-Mutuel Deductions

The Association deducts and retains the following percentages from wagers placed on Grand River Raceway in Ontario which are then shared with the horsepeople. Horsepeople receive a further 2% on all wagers and an additional 2% on trifecta wagering. The Ontario Government retains .5% on all bets placed in Ontario. The Canadian Government retains .8% on all wagers placed in Canada.

Win, Place, Show: 13.65%, Exacta: 17.2%, Trifecta: 21.7%, Super: 23%; all other pools: 11.7%.

Allowances

Allowances for Ontario Sired horses at Signature tracks is 50% and are based on the condition of the class. Allowances for purse earnings at Signature tracks are 25% for fillies and mares (vs colts and geldings) and are based on the conditions of the race only.

Rule 7.15

No association shall allow a person under 18 years of age to purchase or cash a ticket. For the purposes of this rule, a "ticket" is defined as a receipt or voucher that is issued by an association for one or more bets on a race or races. The association shall ensure that signs are clearly posted in all areas, or in application forms, where tickets are purchased or cashed, advising the public of the age restriction.

Advance Notice Of New Bet Cancellation Options

No claim shall be considered for tickets thrown away, lost, changed, destroyed or mutilated beyond recognition. Payment of wagers will only be made upon presentation of valid parimutuel tickets. The following Bet Cancellation Policy is in effect at Grand River Raceway and the Grand River Teletheatre site. A bet can be cancelled up until "stop betting" for the following reasons: 1) A wrong ticket (even after you have left the mutual window) e.g. wrong track; 2) A change in race surface (turf - dirt) or race distance; 3) A scratch of part of an entry (1-1A) or part of a field Self Serve Cancellation; Cancellation of Self Serve Tickets via mutual sellers (see below)

Mutuel Teller Cancellation

1) Open cancellation: ticket must be cancelled prior to stop betting of the race.

2) For tickets of \$100 or more you must write your name, address and telephone number on the back of the ticket before requesting the cancellation. You will also be required to present 1 piece of photo identification to the teller.

When your bets cannot be cancelled:

1) After a pool has been closed (ie betting has been stopped)

2) For tickets of \$100 or more, if photo ID is not presented or a full name, address and telephone number has not been legibly written on the back of the ticket

3) Under circumstances affecting the integrity of a pool or display of pari-mutuel data

4) An officer or the association refuses to cancel and refund the bet under subsection 57

Children

Children are welcome at Grand River Raceway, but must be under adult supervision at ALL Times.

Grand River Raceway Race Night Schedule

June - September | Monday/Wednesday/Friday | Post Time: 6:30 pm



2024

JUNE						
S	M	T	W	T	F	S
						1
2	3	4	5	6	7	8
9	10	11	12	13	14	15
16	17	18	19	20	21	22
23	24	25	26	27	28	29
30						

JULY						
S	M	T	W	T	F	S
	1	2	3	4	5	6
7	8	9	10	11	12	13
14	15	16	17	18	19	20
21	22	23	24	25	26	27
28	29	30	31			

AUGUST						
S	M	T	W	T	F	S
				1	2	3
4	5	6	7	8	9	10
11	12	13	14	15	16	17
18	19	20	21	22	23	24
25	26	27	28	29	30	31

SEPTEMBER						
S	M	T	W	T	F	S
1	2	3	4	5	6	7
8	9	10	11	12	13	14
15	16	17	18	19	20	21
22	23	24	25	26	27	28
29	30					

*Monday, August 5 - Industry Day; Post time: 12:30pm

7445 Wellington County Road 21, Elora, ON N0B1S0

grandriverraceway.com • 519-846-5455



***145 St. Andrew St., W., Fergus
WWW.STUDIOBOUTIQUE.NET
LADIES FASHIONS & ACCESSORIES***

2h media

A user first marketing agency.

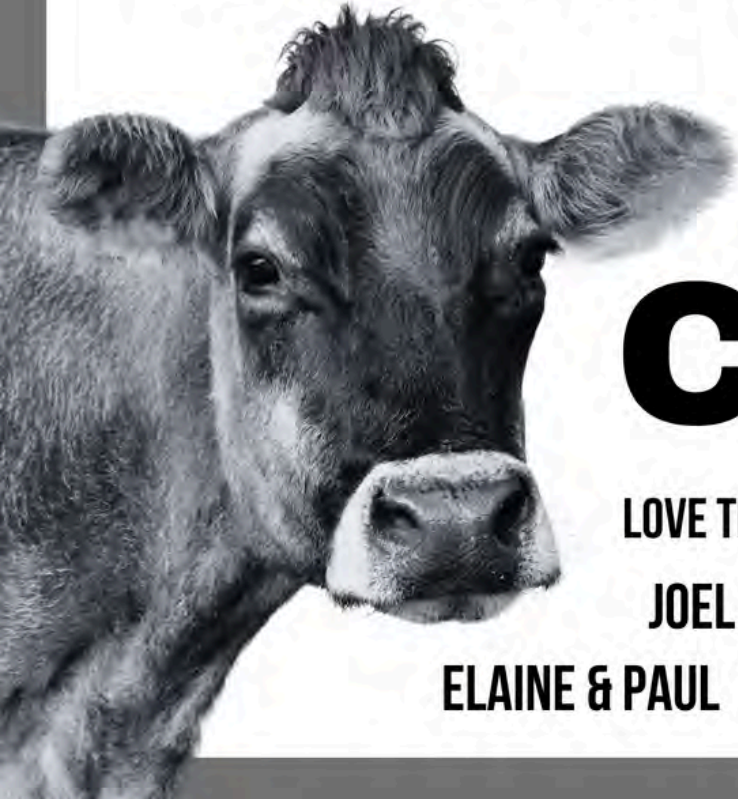
- Digital Advertising
- Landing Pages
- Search Engine Optimization (SEO)
- Explainer Videos
- Marketing Consulting



Web: <https://2h.media>
Email: hello@2h.media
Phone: (519) 835-3009



MOOOO...VE OVER CANCER



LOVE THE CHEESMOND AND GIDDY FAMILIES

JOEL & KATIE NAMIAH & ISABELLE

ELAINE & PAUL TOMAS & LEANNE LIZZIE & ALEX



ELORAFERGUS
TODAY.com



**Sign up
now**
for our email
newsletter
while you wait!



Live life on your terms. Define and protect your legacy.

Extraordinary service that is personal

Customized, disciplined, and
long-term investment strategy

Committed community supporters,
fundraisers, and partners



At Elinesky Schuett Private Wealth, we are experts at multi-generational wealth management and legacy preservation. No matter your needs along your wealth journey, we deliver the holistic expertise, experience, and support you need to bring your financial goals to life.

Looking for expert advice?

We understand the trust our clients have put in us - and we work every day to raise the bar for what you should expect from wealth management.

If that interests you, please get in touch with us.



Elinesky Schuett Private Wealth



Wealth Management
Dominion Securities

elineskyschuett.com | elineskyschuett@rbc.com
519 822 2024

RBC Dominion Securities Inc.* and Royal Bank of Canada are separate corporate entities which are affiliated. *Member-Canadian Investor Protection Fund. RBC Dominion Securities Inc. is a member company of RBC Wealth Management, a business segment of Royal Bank of Canada. ® / ™ Trademark(s) of Royal Bank of Canada. Used under licence. © 2024 RBC Dominion Securities Inc. All rights reserved.



NOTIMEFORCANCER.CA

"IT'S TWO DAYS BEFORE CHRISTMAS, I HAVE PRESENTS TO WRAP, TWO FAMILY GATHERINGS, FRIENDS TO SEE, BAKING, I'M PLANNING A FUNDRAISER, I HAVE SOME SNEAKY 'WHILE IT'S QUIET AT WORK' VACATION BOOKED, AND FOR GOD'S SAKE WE ARE BUILDING A NEW RACE TRACK! I DON'T HAVE TIME FOR CANCER..."

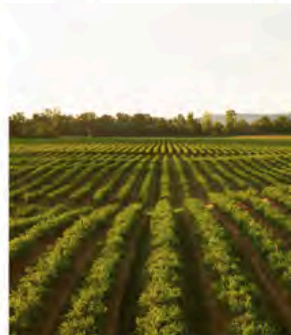
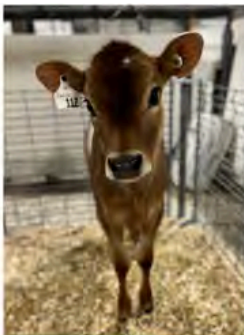
JOIN ME WITH TEARS AND LAUGHTER AS I SHARE MY PERSONAL CANCER JOURNEY.

KATIE GIDDY, VICE PRESIDENT OPERATIONS, GRAND RIVER RACEWAY



**Grand River
Agricultural Society**

is matching your
donations up to **\$12,500**
from tonight's
Harness the Hope Night!



OUR MISSION

Supporting innovation, education, economic growth, and community enabling agriculture and the environment to thrive.



Invest in the essentials.

Multi-Residential | Warehousing & Logistics
Essential Retail | Renewable Infrastructure



Scan to book a meeting
SkylineWealthManagement.ca

Thank you to our donors!



**Grand River
Agricultural Society**



ELORA FERGUS TODAY.com

2h media



FANCY
THAT
CAKE



ELEMENTS CASINO
IT'S ALL HERE | GRAND RIVER

Elinesky Schuett Private Wealth



**Wealth Management
Dominion Securities**

GEI Consultants



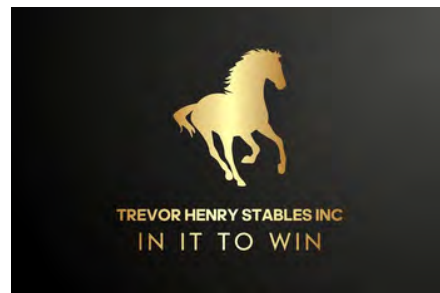
**Studio
BOUTIQUE**



PICTURE US
— Photo & Video Experience Creators —



SV LAW
EXCELLENCE IN OUR COMMUNITY



Wellington County
Lymphedema & Post Surgical Massage

RW
Ron Wilkin Jewellers
Est. 1967

BREADALBANE INN
BOUTIQUE HOTEL • ITALIAN RESTAURANT • GASTRO PUB



station earth
TOTAL HOME TECHNOLOGIES