

FRIDAY, SEPTEMBER 20, 2024

Official Program

\$2.50 taxes Included

# HARNESS RACING

FROM



POST TIME 6:30 PM

HOME OF THE BRAND NEW 5/8-MILE TRACK!

# EXPECT AN EXPERIENCE.

[GRANDRIVERRACEWAY.COM](http://GRANDRIVERRACEWAY.COM)

# Grand River Raceway Entries

## HORSES

ALLSTARWATUACALLIT	3
ANCHOR SO REEL	8
ARAGONITE	3
ART GIZMO	1
ARTISTIC MEADOW	5
BETTER THAN NEVER	7
BETTOR DEAL	5
BETTOR TALKER	6
BIG HONOR	1
B JS CHOICE	3
BRAVE CHIC	5
BROOKLYN STRONG	7
CABOT TOWER	8
CARSONS GOUDA	2
COUNTRY MOUSE	1
DALI DALITE	8
DARKSIDE OF WICKED	1
E L CITADEL	2
EYES ON THE PRIZE	5
FATED FIRE	2
FEEL ITINYOURHANDS	5
FULLOF PERSONALITY	8
GEARSON	1
GET IN LINE	1
HAPPY LOOKER	8
HAZEE COAST	4
HES STILL WATCHING	1
IM A CAPTAIN	4
KINNDER KENOGAMI	3
KOUNTRY GRACE	6
LADYSMITH	2
LAND OF PARADISE	8
LARJON LEVI	4
LARJON LOOKER	3
LMC PEANUTS WATCHN	6
LYONS BRUSHMARKS	7
MAGICAL AOINE	4
MAPPO ORILEY	4
MCSEASHORE	6
MEILLEUR FROMAGE	2
MISS SOPHIA ROSE	5
NOGASEDDIE	3
RAVE REVIEW	8
SHEILAS BRUSH	5
SMOKIN HOT DUDE	3
SNAKE EYES HANOVER	8
SOUTHWIND CIRCUIT	7
SOUTHWIND INFUSION	7
SOUTHWIND JUDGE	6
STATE ONE SMILEY	3
STEADYASWEGO	5
STONEBRIDGE ALIEN	6
THE TURNING POINT	2
THEYMAKEUSBETTER	3
TORQUE DELIGHT	1
TRIBAL DANCER	8
URGENT BAY	1
VOGUE BLUE CHIP	7
WICKED JOULES	6

## TRAINER

BARRINGTON, SHAYNE A	1,2
BISSETT, PATRICK D	3,4,5,8
BOSSENCE, KYLE J	7
BOURASSA, RAPHAEL	2
BOURASSA, RENE	3
BOYD, ROD V	7,8
BURGESS, GRAHAM L	1
COCHRANE, VERNON A	3
DANCETOVIC, GORDON G	3
DAWSON, CARL W	1
FORGIE, PAM M	2
GODDARD, MARK A	3,5
GREGG, VICKI J	2
HORNER, MICHAEL A	4,7
HUDON, PATRICK J	6
HUGHES, RODNEY M	6
JACOBSON, TIM W	2
KEELING, MICHAEL J	6
KENNEDY, BRITTANY E	5
KINGSHOTT, GARY W	1
LENDVOY, ASHLEY	4,5,7,8
LOUGHED, JOHN H	7
MACARTHUR, LYLE G	1
MACDONALD, GARRY L	1
MACDONELL, MARK A	4
MARTIN, HARRY L	2
MCCORMACK, MARK	5
MICHAEL, R GREGG	6
MCNIVEN, SCOTT P	8
MONTOUR, JOSEPH	5
NIXON, DEAN L	3
OBRIAN, DANIEL R	7
OLIVER, KENNETH D	5,8
PERRAULT, WILFORD	6
SHEWELT, BRIAN D	3
SIMPSON, RILEY M	8
STEACY, SHAWN F	4,6
TAYLOR, STEPHEN P	8
WALKER, JULIE A	1,3
WALLACE, BENJAMIN	1
WINACOTT, MARK W	5,8
WOODWARD, JACIE	8
WOODWARD, JASON R	3

## DRIVER

BOYD, NICHOLAS R	6
COULTER, SCOTT	1,2
DAWSON, CARL W	1
FILLION, SAMUEL	2,3,4,8
GODDARD, MARK A	3
GREGG, LOUIS P	2
HARRIS, J BRADLEY	1,3,4,5,6,7,8
HAUGHAN, ANTHONY P	6
HENRY, TRAVIS J	3,4,5,6,7,8
HORNER, MICHAEL A	4,7
HOUSE, LORNE S	8
HUDON, PATRICK J	1,3,6
MACDONALD, BRETT A	1,2
MACDONELL, MARK A	4
MACKENZIE, PAUL G	1,5,8
OBRIAN, DANIEL R	7
RATCHFORD, TODD	2,3,5,6,8
RENAUD, JEAN BERNARD	1,3
ROONEY, GARRETT L	5,8
RYAN, JASON D	1,2,5,7,8
SORRIE, AUSTIN	3,5,6,7,8
THIESSEN, DARYL	1,3,5

# Track Speed Ratings

## SEVEN-EIGHTHS MILE TRACK

WOODBINE MOHAWK PARK	1:55.0
----------------------	--------

## FIVE-EIGHTHS MILE TRACKS

FRASER DOWNS	1:59.0
--------------	--------

GEORGIAN DOWNS	1:57.2
----------------	--------

GRAND RIVER RACEWAY	
---------------------	--

KAWARTHA DOWNS	1:58.0
----------------	--------

NORTHLANDS PARK	1:57.4
-----------------	--------

RIDEAU CARLETON RACEWAY	1:58.1
-------------------------	--------

HIAWATHA HORSE PARK	1:57.1
---------------------	--------

STAMPEDE PARK	1:58.1
---------------	--------

## HALF-MILE TRACKS

CHARLOTTETOWN DRIVING PARK	2:01.0
----------------------------	--------

CLINTON RACEWAY	2:00.3
-----------------	--------

DRESDEN RACEWAY	2:00.2
-----------------	--------

EXHIBITION PARK RACEWAY	2:01.3
-------------------------	--------

FLAMBORO DOWNS	1:58.0
----------------	--------

FREDERICTON RACEWAY	2:00.4
---------------------	--------

HIPPODROME d'AYLMER	2:03.1
---------------------	--------

HANOVER RACEWAY	2:00.3
-----------------	--------

INVERNESS RACEWAY	2:02.2
-------------------	--------

LEAMINGTON RACEWAY	2:01.0
--------------------	--------

HIPPODROME de QUEBEC	2:02.2
----------------------	--------

SUMMERSIDE RACEWAY	2:01.1
--------------------	--------

NORTHSIDE DOWNS	2:04.1
-----------------	--------

HIPPODROME TROIS-RIVIERES	2:01.4
---------------------------	--------

TRURO RACEWAY	2:01.0
---------------	--------

WESTERN FAIR RACEWAY	2:00.1
----------------------	--------

# Trainer Changes

Race	Horse	Trainer Change
3	ARAGONITE	Patrick J Hunt to Dean L Nixon
3	KINNDER KENOGAMI	Jean-Francois Reid to Rene Bourassa

# GRAND RIVER RACEWAY

By Ken Middleton, Jr. - Friday, September 20

**Most Probable Winner:**

Race 1 - #4 Torque Delight

**Longshot Special**

Race 8 - #3 Land Of Paradise

## **Race 1 Selections 4-9-5-6**

**4 TORQUE DELIGHT** went to the front and didn't look back last time en route to a 1:57.1 score. The gelding has the speed needed to handle this group. Top call.

**9 HES STILL WATCHING** picked up shares in each of his last two assignments. Exacta factor in this spot.

**5 GET IN LINE** gets a bit of post relief to work with tonight. It could lead to an improved performance.

## **Race 5 Selections 2-6-7-4**

**2 STEADYASWEGO** was a solid runner-up in her most recent assignment for trainer Kennedy, who gets a great post to work from tonight. Top call in here.

**6 BETTOR DEAL** got away poorly last time and never managed to get involved. She can rebound tonight.

**7 FEEL ITINYOURHANDS** threw in a real clunker last time after racing well two starts ago. Trifecta factor.

## **Race 2 Selections 5-2-3-6**

**5 THE TURNING POINT** was a fast-closing runner-up in last week's second start on Lasix. She's put up solid numbers so far this season. Slight edge tonight.

**2 LADYSMITH** gets a change of scenery tonight and it might suit her. I'll use her on the Exacta ticket here.

**3 FATED FIRE** has picked up shares in her last six starts. She can work her way onto the ticket tonight.

## **Race 6 Selections 7-6-3-2**

**7 BETTOR TALKER** came on strong to grab the show dough in last week's pari-mutuel debut. The colt can build on that effort in here. He gets the nod.

**6 KOUNTRY GRACE** has hit the board in his last two attempts. I can see that trend continuing in this spot.

**3 WICKED JOULES** was a solid runner-up in his debut for trainer Perrault. Top three threat again.

## **Race 3 Selections 4-2-7-9**

**4 KINNDER KENOGAMI** was a solid winner two starts ago, but he lacked staying power versus tougher foes in his latest. He can bounce back here.

**2 STATE ONE SMILEY** totes a four-race winning streak into this tilt for trainer Shewfelt. Exacta factor.

**7 ARAGONITE** qualified in good order at Mohawk Park following some down time. Top three threat.

## **Race 7 Selections 3-4-5-6**

**3 SOUTHWIND INFUSION** was a lapped-on runner-up in his most recent performance for trainer Lendvoy. The gelding has the speed needed to beat this group.

**4 BETTER THAN NEVER** made a costly miscue behind the gate last time out. He can make amends.

**5 SOUTHWIND CIRCUIT** had a rough trip last time and finished up the track. He can bounce back here.

## **Race 4 Selections 6-5-2-4**

**6 LARJON LEVI** has racked up six wins so far this season for trainer Bissett, who has to be pleased with his productivity. I'll rate him on top one more time.

**5 ALL BETS ON RED** has hit the board in five of his last six assignments. He's a logical threat once again.

**2 IM A CAPTAIN** has grabbed shares in five of his last six starts. He can crack the top three in this spot.

## **Race 8 Selections 7-6-5-2**

**7 SNAKE EYES HANOVER** earned a new lifetime mark in her latest outing after being treated to a ground-saving trip. She can double up in this spot.

**6 FULLOF PERSONALITY** was a lapped-on runner-up in her latest outing. She merits a long look again.

**5 CABOT TOWER** took home a small share in her latest assignment for trainer Oliver. Trifecta factor.



# WELCOME

On the



THE GRANDWAY

Patio

VIPs

*Wishing this beautiful couple all the best as they celebrate their wedding on the patio tonight!*

**Congratulations Shannon & Drew!**

---

**Book your 2025**



THE GRANDWAY *Patio Party*

**Get a VIP experience right next to the track!**

12+ people | starting at \$35/per person

(Patio Parties incl. reserved area, dinner, race program, access to bar, and more!)

Contact: [bookings@thegrandway.com](mailto:bookings@thegrandway.com)

# Grand River Raceway Race Night Schedule

June - September | Monday/Wednesday/Friday | Post Time: 6:30 pm



# 2024

JUNE						
S	M	T	W	T	F	S
						1
2	3	4	5	6	7	8
9	10	11	12	13	14	15
16	17	18	19	20	21	22
23	24	25	26	27	28	29
30						

JULY						
S	M	T	W	T	F	S
	1	2	3	4	5	6
7	8	9	10	11	12	13
14	15	16	17	18	19	20
21	22	23	24	25	26	27
28	29	30	31			

AUGUST						
S	M	T	W	T	F	S
				1	2	3
4	5	6	7	8	9	10
11	12	13	14	15	16	17
18	19	20	21	22	23	24
25	26	27	28	29	30	31

SEPTEMBER						
S	M	T	W	T	F	S
1	2	3	4	5	6	7
8	9	10	11	12	13	14
15	16	17	18	19	20	21
22	23	24	25	26	27	28
29	30					

\*Monday, August 5 - Industry Day; Post time: 12:30pm

7445 Wellington County Road 21, Elora, ON N0B1S0

[grandriverraceway.com](http://grandriverraceway.com) • 519-846-5455

# Betting Basics

Some essentials to get you started with making a wager.

## 1 How to wager



Place your bet by visiting a teller, or using a self-serve terminal.

### To place a bet here are just 5 things you need to know:

- 1 Name of racetrack (choose from any track in the simulcast feeds)
- 2 Number of the race
- 3 Amount of your bet (e.g. \$2)
- 4 Type of bet (see step 2)
- 5 Horse's number (see step 4)

Once you have decided what you want to bet, head to the nearest seller's window and use the sample statement as your guide:

**Hello, (Racetrack), race 6, \$2 to WIN on Horse #4**

### How to use a self-serve terminal:

- 1 Swipe your Cash Card/Insert Cash
- 2 Enter the initial PIN #1234 (then choose a new PIN)
- 3 Press/Tap the track you would like to bet: (defaults to current race)
- 4 Tap the Horse Number: **#4**
- 5 Press/Tap the Bet Type: **WIN**
- 6 Press/Tap the Bet Amount: **\$2**
- 7 Press/Tap the Race Number: **Race #6**
- 8 Press Green **"Make BET"** button
- 9 Press/Tap the **"Finish with Receipt"** button
- 10 Be sure to check your ticket to confirm it's the bet you wanted

To get a Cash Card or for assistance ask a teller, or a staff member.

## 2 Types of bets



### Single horse bets (minimum \$2.00 bet is required)

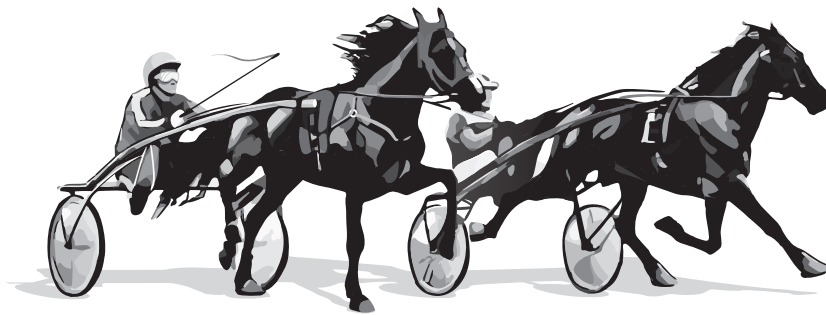
Bet type	Level of difficulty	Explanation and expectation
Win	UUU	Your horse must finish 1st; payoff determined by the win odds.
Place	UU	Your horse must finish 1st or 2nd; payoffs better than to show.
Show	U	Your horse must finish 1st, 2nd, or 3rd; modest payoffs.

### Exotic multiple-horse bets

Bet type	Level of difficulty	Explanation and expectation
Exacta*	UUUU	Your horses must finish 1st and 2nd in exact order; riskier bet that can pay a little or a lot, depending on the horses' odds.
Daily double	UUUUUU	Pick the winners of two designated consecutive races.
Pick 3, Win 4, Pick 5, Pick 6	UUUUUUUU	Select the winners of a designated set of consecutive races. The wager must be made prior to the start of the first race in the multi-race wager.
Triactor*	UUUUUUUU	Your horses must finish 1st, 2nd, and 3rd in exact order; can be expensive to play if you use a lot of horses.
Superfecta*	UUUUUUUUUU	Your horses must finish 1st, 2nd, 3rd, and 4th; big payoff possible.

\* Exotic bets require the horses to finish in the EXACT order you select, unless you "BOX" the bet, in which case your selections can finish in any order.

For more information visit [ONTARIORACING.com](http://ONTARIORACING.com)



## 3 Choosing your horse



### How to read the program

1 2 3 4 5

1	Red- Ag17 <sup>8</sup> Ag17 <sup>8</sup> Ag10 <sup>8</sup> Ag3 <sup>8</sup> Jy19 <sup>8</sup> Jy12 <sup>8</sup>	12 9 7 7 8 5	B c 3 FlmD FlmD Moh Moh M M	Mach Three-Wheres The Beach-Beach Towel 26 ft 26 ft 12 ft 21 ft ft ft	D-ConfedCup D-ConfedCup D-OnSS-gf 3yr-Open MPace MPace	493000 m 50000 m 180000 m 50000 m 1100000 m 50000 m	:26 <sup>1</sup> :26 <sup>2</sup> :25 <sup>4</sup> :26 <sup>1</sup> :26 :27 <sup>1</sup>	:55 <sup>2</sup> :56 :54 :55 :51 <sup>4</sup> :55	1:22 <sup>4</sup> 1:22 <sup>4</sup> 1:21 <sup>3</sup> 1:22 <sup>2</sup> 1:19 <sup>1</sup> 1:22 <sup>1</sup>	1:49 <sup>2</sup> 1:51 <sup>3</sup> 1:49 <sup>2</sup> 1:49 1:47 1:48 <sup>3</sup>	2 3 3 5 2 5	1 <sup>3/4</sup> o1 <sup>1</sup> 4 <sup>6/4</sup> o1 <sup>1/2</sup> o4 <sup>2/2</sup> o1 <sup>3/4</sup>	1 <sup>3/4</sup> 1 <sup>3/4</sup> 1 <sup>3/4</sup> 1 <sup>3/4</sup> 1 <sup>3/4</sup> 1 <sup>1/4</sup>	1 <sup>1/4</sup> 1 <sup>1/4</sup> 1 <sup>2/4</sup> 1 <sup>2/4</sup> 1 <sup>2/4</sup> 1 <sup>2/4</sup>	1 <sup>2/4</sup> 1 <sup>2/4</sup> 1 <sup>2/4</sup> 1 <sup>2/4</sup> 1 <sup>2/4</sup> 1 <sup>2/4</sup>	1 <sup>4</sup> 1 <sup>3/4</sup> 1 <sup>43/4</sup> 1 <sup>2</sup> 2 <sup>nk</sup> 1 <sup>4/2</sup>	1:49 <sup>2</sup> 1:51 <sup>3</sup> 1:49 <sup>2</sup> 1:49 1:47 1:48 <sup>3</sup>	26 <sup>1</sup> 26 <sup>2</sup> 27 26 <sup>1</sup> 26 <sup>2</sup> 27 <sup>1</sup>	29 <sup>1</sup> 29 <sup>3</sup> 27 28 <sup>4</sup> 25 <sup>2</sup> 27 <sup>4</sup>	27 <sup>2</sup> 28 <sup>4</sup> 27 <sup>3</sup> 27 <sup>2</sup> 27 <sup>2</sup> 27 <sup>1</sup>	26 <sup>3</sup> 26 <sup>4</sup> 27 <sup>4</sup> 26 <sup>3</sup> 27 <sup>4</sup> 26 <sup>2</sup>
---	---	-----------------------------	---	---	---	--	---	--	--	--	----------------------------	--	--	--	--	--	--	---	---	--	--

6

Paul MacDonell 157 A Red-White (1195-141-121-119 .207)

#### SOME BEACHSOMEWHERE

7

Tr. Brent MacGrath (9-8-1-0 .950)

Schooner Stables, Bible Hill, NS  
Breeder: Stephanie Smith, OH

8 9

2008	1:48 <sup>3</sup> MM	ft	9	8	1	0	89%	\$1,511,500
2007	1:49 <sup>3</sup> S	Moh	ft	6	6	0	100%	\$812,592
Life	1:48 <sup>3</sup> MM		3yo	14	wins			\$2,324,092
PMacDnll	BMacGrth	*15	Somebeachsmwahr	SantnnBlChp	ThMhgnPn	9		
PMacDnll	BMacGrth	*05	Somebeachsmwahr	DecSlstr	SantnnBlchp	6		
PMacDnll	BMacGrth	*05	Somebeachsmwahr	KeystonHrt	DecSlstr	8		
PMacDnll	BMacGrth	*05	Somebeachsmwahr	KeystonHrt	ThMhgnPn	6		
PMacDnll	BMacGrth	*10	ArtOffdl	Somebeahsmwahr	SharThDight	9		
PMacDnll	BMacGrth	*20	Somebeachsomwahr	ArtOffdl	BadlndsNtr	8		

All of the numbers and letters in the program might seem confusing or overwhelming at first, but focusing on these sections makes choosing a horse simple.

- Horse's number in the race
- Horse's post position colour
- Horse's colour, sex, age, sire (father), dam (mother), sire of the dam
- Morning line odds
- Horse's name
- Driver and Driver Record (Name, # of wins, # of 2nds, # of 3rds, winning %)
- Trainer information
- Horse's Lifetime record (with best win time, track size, track, age, lifetime wins and lifetime earnings)
- Horse's current record (# of races, # wins, # of 2nds, # of 3rds, and money earned)

## 4 The odds



Odds are also important to consider when choosing your horse. Horses that are thought to have a better chance of winning will typically have lower odds.

### Morning line odds

Odds listed in the race program are the "morning line" odds. These are predictions of how the public will bet on the race. They are set by the track's handicapper when the race program is published, before the wagering starts.

The actual odds will be posted on the **Television** or in-field on the **Tote Board** before the race; they change up until post time, depending on how customers are betting on each horse in the race.

### Calculating a \$2 win prize

To calculate a win prize, find the Odds of a horse on the **Television** or **Tote Board** (in-field board).

Multiply the first number by 2, then divide that number by the second digit (if there is one), and then add \$2. Simple as that!

Odds	1/2	2/1	7/2	5/1	10/1
Pays	\$3.00	\$6.00	\$9.00	\$12.00	\$22.00

### Helpful facts for betting

- Some racetracks have a television simulcast commentator who tries to identify winning horses (handicaps) between the races. Listen and see if you can pick up any good tips to bet on.
- A good betting method is to choose horses with current odds two to three times higher than their morning line odds.

### 3 Tips to remember

**WIN BETS** on the FAVOURITE pay 32% of the time  
**PLACE BETS** on the FAVOURITE pay 53% of the time  
**SHOW BETS** on the FAVOURITE pay 67% of the time

\* Numbers listed above are approximate, may vary by racetrack.

Proudly supported by



Must be 18 years or older to bet. Please play responsibly.

1

PACE

\$0.20 TRIFECTA & EXACTA & \$0.20 SUPERFACTA & PICK 5- \$5000 GUARANTEED(1-2-3-4-5) & DAILY DOUBLE (Races 1 and 2)

1 MILE

PURSE \$8700. HORSES & GELDINGS - N/W OF 1 RACE OR \$3,600 LIFETIME (W-ALL). AE: 3 YEAR OLDS

N/A #390 PS IN 2024.

WARM-UP PAD

PROBABLE FAVOURITES: 4-9-5-6

ASK FOR HORSE BY PROGRAM NUMBER

Table with columns: Date, Track, CCndVar, Class, Purse, 1/4, 1/2, 3/4, Fin, Fld, PP, 1/4, 1/2, 3/4, Str., Fin., 1/4, L 1/2, L 3/4, L 1/4, Time Odds, Drv, Trn, First, Second, Third. Rows include race details for programs 1 through 9, listing horses like Big Honor, Darkside of Wicked, Urgent Bay, Torque Delight, Get in Line, Country Mouse, Art Gizmo, Gearson, and Hes Still Watching.



# 2

**PACE**  
1 MILE

**\$0.20 TRIFECTA & EXACTA & PICK 4 \$2500 GUARANTEED(2-3-4-5) & \$0.20 SUPERFECTA**  
**PURSE \$9700. FILLIES & MARES - N/W \$5,000 LAST 3 (W/O \$9,700 LAST 5 N/E) AE: CLAIMING**  
\$18,000 (W-ALL). (STARTERS FOR A PURSE \$15,000 OR MORE LAST START N/E).

WARM-UP PAD

**PROBABLE FAVOURITES: 2-6-5-4**

### ASK FOR HORSE BY PROGRAM NUMBER

Date	Track	°CndVar	Class	Purse	1/4	1/2	3/4	Fin	Fld	PP	1/4	1/2	3/4	Str.	Fin.	1/4	L/2	L/4	L/4	Time	Odds	Drv	Trn	First	Second	Third		
<b>1</b>																												
<b>8-1 Todd Ratchford</b> Maroon-Grey (645-81-68-83-.227)														<b>Tr: Harry Martin</b> (46-3-10-9-.251) ft 1:55 <sup>2</sup> GeoD <sup>5/8</sup> 2024 19 1 3 5 \$13,713														
<b>MEILLEUR FROMAGE</b> (6, 5/8, 1:55 <sup>2</sup> , 9 \$82,690)														<b>Harry Martin, Hanover, ON</b> ft 1:56 <sup>3</sup> Clntr 2023 27 4 4 3 \$36,253														
Breeder: Harry Martin, Hanover, ON Last 5 Sts - \$3,009 Last 10 Sts - \$8,251																												
RED	B m 6 by Betterthancheddar-Bali Seelster-Intrepid Seelster																											
Sep14	2	Hnvr	28ft	Nw3000I3cd	5500	:28	:59	1:28	1:57	8	3	5 <sup>7/2</sup>	4 <sup>2</sup> / <sub>4</sub>	3 <sup>3</sup> / <sub>4</sub>	4 <sup>1</sup> / <sub>4</sub>	:29	:30	:29	:28	1:57	5 <sup>5</sup> / <sub>8</sub>	HarJ	MarH	AzucarJack	RdSkyTnght	VlntrOfLd		
Sep6	5	Grvr <sup>5/8</sup>	16ft	F-nw1920I3s	6300	:27	:55	1:24	1:53	8	4	2 <sup>ns</sup>	2 <sup>1</sup> / <sub>2</sub>	3 <sup>1</sup> / <sub>4</sub>	3 <sup>1</sup> / <sub>4</sub>	:27	:28	:29	:29	1:54	3 <sup>20</sup> / <sub>8</sub>	HarJ	MarH	LdyGtLcky	MllrFrmg	Flltnrhdns		
Sep1	6	Clntr	20ft	Nw2500I3cd	6200	:28	:57	1:26	1:57	8	7	8 <sup>10</sup> / <sub>12</sub>	8 <sup>10</sup> / <sub>12</sub>	7 <sup>4</sup> / <sub>2</sub>	5 <sup>3</sup> / <sub>4</sub>	3 <sup>1</sup> / <sub>4</sub>	:30	:29	:27	:30	1:58	6 <sup>5</sup> / <sub>10</sub>	HarJ	MarH	MrCheeseman	HesSporty	MllrFrmg	
Aug24	5	Hnvr	28ft	Nw3000I3cd	5000	:28	:59	1:28	1:57	7	7	7 <sup>9</sup>	7 <sup>6</sup>	7 <sup>4</sup> / <sub>2</sub>	6 <sup>5</sup>	5 <sup>3</sup>	:30	:30	:28	:28	1:57	1 <sup>3</sup> / <sub>60</sub>	RyaJ	MarH	PmbrkLgcyN	MdmWlTr	ExtcDrgn	
Aug16	3	Grvr <sup>5/8</sup>	23gd-1	F-nw3000I3cd	6800	:26	:54	1:23	1:54	7	6	4 <sup>9</sup>	5 <sup>9</sup> / <sub>4</sub>	7 <sup>6</sup> / <sub>2</sub>	6 <sup>5</sup> / <sub>4</sub>	6 <sup>4</sup> / <sub>4</sub>	:27	:30	:29	:28	1:52	5 <sup>0</sup> / <sub>90</sub>	RyaJ	MarH	Duchenne	ThTrngPnt	LdyGtLcky	
Aug4	8	GeoD <sup>5/8</sup>	25ft	F-nw1500I3cd	7700	:27	:56	1:25	1:55	9	4	6 <sup>7</sup>	6 <sup>5</sup> / <sub>2</sub>	6 <sup>4</sup> / <sub>2</sub>	4 <sup>2</sup>	1 <sup>hd</sup>	:28	:28	:29	:29	1:55	8 <sup>4</sup> / <sub>5</sub>	RyaJ	MarH	MllrFrmg	PJDen	CtCtck	
Jul26	8	Grvr <sup>5/8</sup>	24ft	F-nw1920I3s	5800	:26	:55	1:23	1:54	7	4	4 <sup>3</sup> / <sub>2</sub>	4 <sup>5</sup>	4 <sup>2</sup> / <sub>2</sub>	4 <sup>1</sup> / <sub>4</sub>	3 <sup>3</sup> / <sub>4</sub>	:27	:29	:28	:30	1:54	2 <sup>9</sup> / <sub>70</sub>	RatT	MarH	RightMatch	StrbrdgrDrm	MllrFrmg	
Jul19	10	Grvr <sup>5/8</sup>	20ft	F-nw1500I3cd	5800	:27	:55	1:24	1:53	8	7	3 <sup>9</sup> / <sub>2</sub>	3 <sup>9</sup>	3 <sup>9</sup>	3 <sup>9</sup>	4 <sup>9</sup>	:27	:29	:29	:30	1:55	3 <sup>1</sup> / <sub>60</sub>	RatT	MarH	ThTrngPnt	CozeyUp	ShlsBrsh	
<b>2</b>																												
<b>9-5 CL \$2700 Samuel Fillion</b> 155 Blue-White (1408-224-230-223-.302)														<b>Tr: Raphael Bourassa</b> (154-24-31-22-.315) ft 1:54 <sup>1</sup> Grvr <sup>5/8</sup> 2024 12 1 7 1 \$18,176														
<b>LADYSMITH</b> (3, 7/8, 1:53 <sup>2</sup> , 3 \$57,320)														<b>Michel Lagace, Terrebonne, QC</b> ft 1:53 <sup>2</sup> Wbs <sup>7/8</sup> 2023 21 2 6 2 \$36,147														
Breeder: David Willmot, King City, Clay Harland Homer, Toronto, ON Last 5 Sts - \$7,720 Last 10 Sts - \$16,316																												
BLUE	B m 4 by Bettors Delight-Wickanish-Somebeachsomewhere LSYS 26,000																											
Sep12	10	Wbs <sup>7/8</sup>	20ft	F-pop up	20000	:26	:55	1:24	1:52	10	6	1 <sup>01</sup>	3 <sup>1</sup> / <sub>2</sub>	4 <sup>1</sup> / <sub>2</sub>	5 <sup>2</sup> / <sub>4</sub>	6 <sup>3</sup>	:26	:29	:28	:29	1:53	5 <sup>10</sup> / <sub>10</sub>	HudP	BoRa	ChlssChc	GtngEchrd	RoyalTell	
Sep5	7	Wbs <sup>7/8</sup>	20ft	F-pop up	12000	:26	:56	1:24	1:52	10	4	3 <sup>3</sup>	3 <sup>3</sup>	4 <sup>3</sup>	4 <sup>2</sup> / <sub>4</sub>	2 <sup>ns</sup>	:27	:29	:28	:27	1:53	1 <sup>9</sup> / <sub>70</sub>	HudP	BoRa	BtrBDrnnN	Ladysmith	CmpssrsDV	
Aug28	9	Grvr <sup>5/8</sup>	22ft	F-2000Clmcd	6800	:26	:54	1:23	1:52	7	1	1 <sup>1</sup> / <sub>2</sub>	1 <sup>1</sup> / <sub>2</sub>	1h	1h	2 <sup>ns</sup>	:26	:28	:28	:29	1:52	5 <sup>0</sup> / <sub>90</sub>	FllS	BoRa	Bttrntmchm	Ladysmith	RoyalTell	
Aug20	10	Wbs <sup>7/8</sup>	15ft	F-2000Clmcd	11000	:27	:56	1:24	1:53	10	9	1 <sup>1</sup> / <sub>2</sub>	1 <sup>1</sup> / <sub>2</sub>	1 <sup>ns</sup>	2 <sup>3</sup> / <sub>4</sub>	3 <sup>1</sup> / <sub>4</sub>	:27	:29	:28	:28	1:53	9 <sup>90</sup> / <sub>10</sub>	BoR	BoRa	AlwysActch	NMnyHny	Ladysmith	
Aug14	2	Grvr <sup>5/8</sup>	24ft	F-2000Clmcd	6800	:26	:56	1:24	1:53	6	3	2 <sup>2</sup>	2 <sup>1</sup> / <sub>4</sub>	2 <sup>1</sup> / <sub>2</sub>	2h	2 <sup>ns</sup>	:27	:29	:27	:28	1:53	2 <sup>20</sup> / <sub>10</sub>	FllS	BoRa	DngrsCrvs	Ladysmith	GmmAcn	
Aug7	10	Grvr <sup>5/8</sup>	22ft	F-2000Clmcd	6200	:26	:55	1:24	1:54	9	2	1 <sup>nk</sup>	1 <sup>1</sup> / <sub>2</sub>	2 <sup>1</sup> / <sub>2</sub>	2 <sup>nk</sup>	1h	:26	:29	:29	:29	1:54	6 <sup>25</sup> / <sub>10</sub>	FllS	BoRa	Ladysmith	LoveOnMe	NMnyHny	
Jul24	9	Grvr <sup>5/8</sup>	20ft	F-2000Clmcd	6200	:27	:57	1:26	1:55	5	scratched - judges(ineligible)																	
Jul17	7	Grvr <sup>5/8</sup>	20ft	F-2000Clmcd	6800	:27	:57	1:24	1:53	6	4	2 <sup>1</sup>	2 <sup>1</sup> / <sub>2</sub>	2 <sup>3</sup> / <sub>2</sub>	2 <sup>4</sup>	2 <sup>2</sup> / <sub>4</sub>	:27	:29	:28	:28	1:53	16 <sup>15</sup> / <sub>10</sub>	MacB	MoR	UltmtTwx	FshnFrwd	DchssOBtrt	
<b>3</b>																												
<b>6-1 Brett Macdonald</b> 135 Burgundy-White-Black (1210-165-168-158-.257)														<b>Tr: Pam Forgie</b> (95-22-18-9-.368) ft 1:52 <sup>1</sup> Grvr <sup>5/8</sup> 2024 24 4 5 0 \$36,655														
<b>FATED FIRE</b> (3, 5/8, 1:51 <sup>3</sup> , 10 \$96,390)														<b>Mindy Findling Repko, Delray Beach, FL</b> ft 1:51 <sup>3</sup> Scd <sup>5/8</sup> 2023 27 4 3 5 \$41,225														
Breeder: John Barnard, Miami, FL Last 5 Sts - \$6,385 Last 10 Sts - \$16,835																												
WHITE	B m 4 by Straight Shooting-Shes Meant To Be-Sagebrush																											
Sep7	2	Hnvr	12ft	Nw3000I3cd	5500	:28	:58	1:26	1:57	6	8	3 <sup>4</sup>	3 <sup>9</sup>	3 <sup>9</sup>	2 <sup>9</sup>	3 <sup>2</sup>	4 <sup>5</sup> / <sub>4</sub>	:29	:29	:28	:31	1:58	1 <sup>50</sup> / <sub>10</sub>	HarJ	ForP	VlntrOfLd	LmlnDCcnt	VcsAlcs
Aug30	8	Grvr <sup>5/8</sup>	24ft	F-nw3610I3cd	6500	:26	:56	1:24	1:53	8	7	2 <sup>1</sup> / <sub>2</sub>	3 <sup>1</sup> / <sub>2</sub>	2 <sup>9</sup>	2h	2 <sup>hd</sup>	:26	:30	:28	:29	1:53	3 <sup>20</sup> / <sub>10</sub>	MacB	ForP	WtchHrDwtl	FatedFire	ExtcDrgn	
Aug24	2	Hnvr	28ft	Invitation	10000	:28	:59	1:26	1:55	8	5	6 <sup>8</sup> / <sub>2</sub>	5 <sup>5</sup>	5 <sup>4</sup> / <sub>4</sub>	4 <sup>6</sup>	4 <sup>5</sup> / <sub>4</sub>	:30	:29	:27	:28	1:56	2 <sup>1</sup> / <sub>80</sub>	HarJ	ForP	GasSurreal	Sportline	CzlmSpcl	
Aug9	3	Grvr <sup>5/8</sup>	20ft	F-nw3300I3cd	6500	:26	:55	1:24	1:52	7	7	7 <sup>11</sup> / <sub>2</sub>	7 <sup>8</sup> / <sub>2</sub>	4 <sup>9</sup>	4 <sup>3</sup> / <sub>4</sub>	4 <sup>4</sup>	:28	:28	:27	:28	1:53	8 <sup>50</sup> / <sub>10</sub>	MacB	ForP	Cntgttmymnd	MsQuickSand	Duchenne	
Aug4	7	GeoD <sup>5/8</sup>	25ft	F-nw6650I3cd	12000	:28	:58	1:26	1:54	7	5	1 <sup>01</sup>	1 <sup>1</sup> / <sub>2</sub>	1 <sup>1</sup>	1 <sup>1</sup>	2h	:28	:29	:28	:28	1:54	3 <sup>0</sup> / <sub>5</sub>	MacB	ForP	SlsbrkOlymp	FatedFire	ExtcDrgn	
Jul26	7	Grvr <sup>5/8</sup>	24ft	F-nw5450I3cd	7200	:26	:56	1:24	1:52	6	5	1 <sup>1</sup> / <sub>2</sub>	2 <sup>1</sup> / <sub>2</sub>	3 <sup>2</sup>	3 <sup>1</sup> / <sub>4</sub>	2 <sup>1</sup> / <sub>4</sub>	:26	:29	:28	:28	1:52	10 <sup>10</sup> / <sub>10</sub>	HauA	ForP	MsQuickSand	FatedFire	GtngEchrd	
Jun29	2	Wbs <sup>7/8</sup>	24ft	F-nw8000I5cd	18000	:27	:55	1:23	1:51	8	3	5 <sup>8</sup> / <sub>2</sub>	5 <sup>1</sup> / <sub>4</sub>	5 <sup>5</sup>	6 <sup>6</sup>	7 <sup>6</sup> / <sub>2</sub>	:28	:28	:27	:28	1:52	3 <sup>6</sup> / <sub>65</sub>	MacB	ForP	FlightCrewN	CheesySmile	ElisRsnA	
Jun21	6	Grvr <sup>5/8</sup>	25ft	F-nw5000I3cd	7200	:27	:55	1:24	1:52	8	6	2 <sup>1</sup> / <sub>4</sub>	2 <sup>1</sup> / <sub>2</sub>	2 <sup>2</sup>	2 <sup>2</sup> / <sub>4</sub>	4 <sup>1</sup> / <sub>4</sub>	:27	:28	:28	:27	1:52	4 <sup>4</sup> / <sub>5</sub>	MacB	ForP	FatedFire	SwtGdgts	DngrsCrvs	
<b>4</b>																												
<b>4-1 Jason Ryan</b> 170 Green-White (1241-183-194-172-.280)														<b>Tr: Tim Jacobson</b> (36-3-4-3-.172) ft 1:54 GeoD <sup>5/8</sup> 2024 23 3 3 1 \$22,147														
<b>E L CITADEL</b> (4, 7/8, 1:53 <sup>3</sup> , 14 \$126,197)														<b>James Edward Lewis, Angus, ON</b> ft 1:53 <sup>3</sup> Wbs <sup>7/8</sup> 2023 29 3 7 5 \$39,762														
Breeder: James Edward Lewis, Angus, ON Last 5 Sts - \$9,635 Last 10 Sts - \$11,572																												
GREEN	Br m 8 by Big Jim-E L Miss Barracuda-Camluck																											
Sep12	8	Wbs <sup>7/8</sup>	20ft	Pop up	12000	:27	:56	1:24	1:52	6	6	6 <sup>8</sup>	6 <sup>6</sup> / <sub>4</sub>	6 <sup>6</sup>	5 <sup>5</sup> / <sub>2</sub>	4 <sup>2</sup> / <sub>2</sub>	:28	:28	:28	:27	1:53	1 <sup>3</sup> / <sub>25</sub>	YouS	JacT	Duchenne	StrbrdgrDrm	MndngFnc	
Sep5	7	Wbs <sup>7/8</sup>	20ft	F-pop up	12000	:26	:56	1:24	1:52	10	9	9 <sup>11</sup> / <sub>4</sub>	9 <sup>1</sup> / <sub>4</sub>	9 <sup>9</sup> / <sub>8</sub>	8 <sup>8</sup> / <sub>2</sub>	6 <sup>3</sup> / <sub>4</sub>	:29	:29	:27	:27	1:53	8 <sup>0</sup> / <sub>95</sub>	YouS	JacT	BtrBDrnnN	Ladysmith	CmpssrsDV	
Aug29	2	Wbs <sup>7/8</sup>	19ft	F-pop up	12000	:26	:55	1:24	1:52	8	4	6 <sup>7</sup> / <sub>4</sub>	6 <sup>7</sup> / <sub>4</sub>	4 <sup>9</sup>	5 <sup>6</sup>	8 <sup>10</sup> / <sub>4</sub>	:28	:28	:28	:29	1:54	6 <sup>50</sup> / <sub>10</sub>	McC	JacT	SltCrssng	MyOnlySnsn	LlsSnsn	
Aug25	7	GeoD <sup>5/8</sup>	22ft	F-nw3500I3cd	10000	:28	:57	1:25	1:55	7	5	1 <sup>1</sup> / <sub>2</sub>	1 <sup>1</sup> / <sub>2</sub>	1 <sup>1</sup> / <sub>2</sub>	1 <sup>hd</sup>	1 <sup>1</sup> / <sub>4</sub>	:28	:29	:28	:29	1:55	3 <sup>6</sup> / <sub>5</sub>	RyaJ	JacT	ELCitadel	VoomVoom	Bttrntmchm	
Aug11	10	GeoD <sup>5/8</sup>	16ft	F-nw1500I3cd	7350	:28	:57	1:26	1:55	8	5	1 <sup>1</sup> / <sub>2</sub>	1 <sup>1</sup> / <sub>2</sub>	1 <sup>1</sup>	1 <sup>1</sup>	1 <sup>nk</sup>	:28	:29	:28	:29	1:55	4 <sup>3</sup> / <sub>4</sub>	RyaJ	JacT	ELCitadel	TPrtvHnvr	VoomVoom	
Aug4	8	GeoD <sup>5/8</sup>	25ft	F-nw1500I3cd	7700	:27	:56	1:25	1:55	9	9	9 <sup>11</sup> / <sub>2</sub>	9 <sup>10</sup>	9 <sup>7</sup> / <sub>2</sub>	9 <sup>8</sup> / <sub>2</sub>	7 <sup>9</sup> / <sub>4</sub>	:29	:28	:28	:29	1:56	8 <sup>2</sup> / <sub>40</sub>	JacT	JacT	MllrFrmg	PJDen	CtCtck	
Jul28	1	GeoD <sup>5/8</sup>	28ft	F-nw1500I3cd	7700	:26	:55	1:23	1:53	9	3	2 <sup>hd</sup>	2 <sup>1</sup>	4 <sup>3</sup> / <sub>2</sub>	3 <sup>2</sup>	5 <sup>7</sup> / <sub>2</sub>	:26	:29	:28	:31	1:55	3 <sup>6</sup> / <sub>5</sub>	JacT	JacT	ThsGrIRls	RoyalTell	GldnLdr	
Jul20	8	Hnvr	27ft	Nw1650I3cd	4000	:28	:58	1:27	1:57	8	5	2 <sup>1</sup> / <sub>2</sub>	2 <sup>1</sup> / <sub>2</sub>	2 <sup>1</sup> / <sub>2</sub>	2 <sup>3</sup>	2 <sup>1</sup> / <sub>4</sub>	:28	:29	:29	:30	1:57	4 <sup>3</sup> / <sub>40</sub>	RyaJ	JacT	SpOfBrbn	ELCitadel	BrvdSlstr	
<b>5</b>																												
<b>3-1 Scott Coulter</b> 163 Tan-Black-White (638-98-80-94-.272)														<b>Tr: Shayne Barrington</b> (199-35-23-26-.283) ft 1:53 <sup>4</sup> Grvr <sup>5/8</sup> 2024 28 5 7 3 \$43,915														
<b>THE TURNING POINT L</b> (4, 1, 1:52 <sup>2</sup> , 9 \$91,180)														<b>Sylvain Cote, Joliette, Robert Bernicky, L'Ange-Gardien, QC</b> ft 1:52 <sup>2</sup> M <sup>1</sup> 2023 24 3 5 0 \$32,715														
Breeder: Lyndar Stables, IN-Ervin Miller Stable Inc, PA-Omer Miller, IL Last 5 Sts - \$7,525 Last 10 Sts - \$11,065																												
BLACK	Br m 5 by Jk Endofanera-Ty Chis Legacy-A Rocknroll Dance																											
Sep12	8	FldM	22ft	F-2000Clmcd-L	7200	:28	:58	1:2																				

ASK FOR HORSE BY PROGRAM NUMBER

Table with columns: Date, Track, Cnd, Var, Class, Purse, 1/4, 1/2, 3/4, Fin, Fld, PP, 1/4, 1/2, 3/4, Str., Fin., 1/4, L/2, L/4, L/4, Time, Odds, Drv, Trn, First, Second, Third. Rows 1-9 contain race details for various horses like Larjon Looker, State One Smiley, Theymakeusbetter, Kinnder Kenogami, Allstarwatuacall, Nogaseddie, Aragonite, Smokin Hot Dude, and B J S Choice.

KINNDER KENOGAMI Trainer Change: Jean-Francois Reid to Rene Bourassa  
ARAGONITE Trainer Change: Patrick J Hunt to Dean L Nixon

ASK FOR HORSE BY PROGRAM NUMBER

Table with columns: Date, Track, Cnd, Var, Class, Purse, 1/4, 1/2, 3/4, Fin, Fld, PP, 1/4, 1/2, 3/4, Str., Fin., 1/4, L1/2, L3/4, L1/4, Time, Odds, Drv, Trn, First, Second, Third. Rows include program numbers 1-5 and horse names like MAGICAL AOINE L, IM A CAPTAIN, MAPPO ORILEY, HAZEE COAST, and LARJON LEVI.



THE GRANDWAY A GRANDWAY MURDER MYSTERY DINNER THEATRE

# GHOULS JUST WANNA HAVE FUN

In an effort to mend relationships and reverse bad first impressions, Ricki decides to invite the neighbourhood to a good, old-fashioned Halloween party...



SATURDAY, OCTOBER 5, 2024

3-COURSE DINNER AND INTERACTIVE SHOW  
DOORS OPEN 5:30 PM

BUY TICKETS: [THEGRANDWAY.COM/GRAND-EVENTS/](https://thegrandway.com/grand-events/)



## SAT, OCT 26

Doors open at 6:30 pm

Two great comedians.

\$30 +tax



Get tickets by  
scanning QR code:

[thegrandway.com](https://thegrandway.com)

Come for drinks and dinner!

Menu and bar will be available for purchase.

# Get tickets to a Guelph Storm game!

Season begins Sept 27!



Get Storm  
Tickets Here:



TONIGHT OUR FRIENDS FROM THE STORM ARE ENJOYING  
A STAFF OUTING ON THE GRANDWAY PATIO.

## WINBAK FARM'S 2024 Yearling Lineup



Selling Ontario-Sired Yearlings at:

Lexington (9/30-10/4) • London Classic (10/17 & 10/18)  
Harrisburg (11/4-11/6) • Harrisburg Mixed (11/7 & 11/8)

**Ontario Pacers Sired by:** Artspeak, Betterthancheddar, **Betting Line\***,  
Bettor's Delight, Cattlewash\*, McWicked, Shadow Play, Sportswriter & Stag Party

**Ontario Trotters Sired by:** Archangel, Green Manalishi S, Muscle Mass,  
My MVP, Resolve & Trixton

\*Introducing the 1<sup>st</sup> Ontario Crops from **Betting Line & Cattlewash!**



Visit [www.winbakfarm.com](http://www.winbakfarm.com) for Winbak Farm's 2024 Yearling Lineup!

**#1 Breeder for Ontario Sire Stakes in 2023!**

Joe & JoAnn Thomson, Winbak Farm Owners / Jack Burke, General Manager / Pat Woods, Canada Manager  
James Ladwig, Yearling Manager / 410.885.3059 / [james.ladwig@winbakfarm.com](mailto:james.ladwig@winbakfarm.com) / f / X / @

# JOIN THE FUN!

All ages welcome!

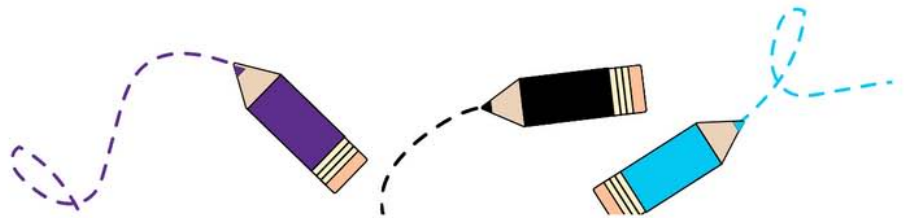


**NEIGH**bourhood

- LEARN ABOUT HORSERACING
- GET FREE STUFF
- DO FUN ACTIVITIES
- AND MORE...

See GRR Ambassador, Tom, or a mutuel teller to receive your NEIGHbourhood activity bag!

[grandriverraceway.com](http://grandriverraceway.com)



 THE GRANDWAY Lounge

**TAKEOUT AVAILABLE.**  
Seating right next to the track!

Check out the menu at  
**[thegrandway.com](http://thegrandway.com)**

# 5

**PACE**  
1 MILE

**\$0.20 TRIFECTA & EXACTA & SUPER HI-5**

**PURSE \$6500. POP UP SERIES: FILLIES & MARES: NOT AVERAGING \$650 PER START IN 2024 (MIN 10**

**STARTS). LEG 2. AE: LEG 1 STARTERS.**

WARM-UP PAD

**PROBABLE FAVOURITES: 2-4-6-5**

## ASK FOR HORSE BY PROGRAM NUMBER

Date	Track	°Cnd	Var	Class	Purse	1/4	1/2	3/4	Fin	Fld	PP	1/4	1/2	3/4	Str.	Fin.	1/4	L/2	L/4	L/4	Time	Odds	Drv	Trn	First	Second	Third	
<b>1</b>	<b>12-1</b>	<b>Todd Ratchford</b> Maroon-Grey (645-81-68-83-227)										<b>Tr: Joseph Montour</b> (19-0-4-1-134)										2024	17	0	4	1	\$5,745	
		<b>BRAVE CHIC</b> (3, 5/8, 1:59.2 \$14,169)										<b>Joseph Montour, Ohswaken, ON</b> ft 1:59.2 Sar <sup>9/16</sup>										2023	20	1	2	2	\$8,424	
	RED	B m 4	by Royal Mattjesty-Fit N	Bad-Badlands Hanover ONT-SEL	39,000																							
	Sep7	1	Sar <sup>5/8</sup>	14ft	8000clmcd	3800	:28	:57	1:27	1:58	9	1	4 <sup>1/2</sup>	3 <sup>4/4</sup>	2 <sup>nd</sup>	2 <sup>1</sup>	2 <sup>1/4</sup>	:28	:30	:28	:31	1:58	12 <sup>5</sup>	MooA	MonJ	MikiBurke	BraveChic	MtsTtn
	Aug31	2	Sar <sup>9/16</sup>	25ft	8000clmcd	3800	:28	:58	1:27	1:57	6	5	6 <sup>05/16</sup>	5 <sup>4/4</sup>	4 <sup>03/4</sup>	6 <sup>1/2</sup>	6 <sup>3/4</sup>	:29	:29	:29	:30	1:59	53 <sup>50</sup>	StEn	MonJ	LdyGtLcky	SnrAdvsr	Starbets
	Aug24	3	Sar <sup>9/16</sup>	25ft	8000clmcd	3800	:28	:58	1:27	1:56	6	5	6 <sup>13</sup>	6 <sup>3/4</sup>	6 <sup>03/4</sup>	6 <sup>5/4</sup>	5d <sup>h3/4</sup>	:30	:29	:28	:29	1:57	13 <sup>65</sup>	MooA	MonJ	NorthernSpyBtr	ThnCsh	SnrAdvsr
	Aug17	5	Sar <sup>9/16</sup>	21 sy-3	8000clmcd	3800	:28	:58	1:28	1:59	9	9	3 <sup>33/4</sup>	3 <sup>23/4</sup>	7 <sup>07</sup>	9 <sup>18</sup>	9 <sup>22/16</sup>	:29	:30	:30	:34	2:03	14 <sup>25</sup>	WraS	MonJ	HiPatrick	Rmissashlee	ChsSPrtty
	Aug10	3	Sar <sup>9/16</sup>	21 ft-1	8000clmcd	3800	:27	:57	1:27	1:58	8	3	2 <sup>1</sup>	1 <sup>1/2</sup>	2 <sup>1</sup>	2 <sup>2</sup>	2 <sup>2</sup>	:31	:29	:30	:32	1:59	13 <sup>40</sup>	WraS	MonJ	RaveReview	BraveChic	ChsSPrtty
	Aug3	11	Sar <sup>9/16</sup>	25ft	8000clmcd	3800	:28	:58	1:28	1:56	9	3	2 <sup>2</sup>	2 <sup>2</sup>	2 <sup>13/4</sup>	2 <sup>3</sup>	2 <sup>3/4</sup>	:28	:30	:29	:28	1:57	15 <sup>50</sup>	WraS	MonJ	CoveBeach	BraveChic	GrystnInO
<b>2</b>	<b>2-1</b>	<b>Garrett Rooney</b> 150 Red-White-Black (1019-238-170-159-378)										<b>Tr: Brittany Kennedy</b> (63-12-10-8-320)										2024	16	1	1	1	\$7,047	
		<b>STEADYASWEGO</b> (3, 1:55, 7 \$47,527)										<b>Brittany Kennedy, Moneyclip Racing, Shawn Bustin, ON</b> ft 1:54.5 Flmd										2023	17	4	3	4	\$30,205	
	BLUE	B m 4	by All Bets Off-Flight Of An Angel-Mach	Three																								
	Sep13	10	Grv <sup>5/8</sup>	22ft	F-pop up	6500	:26	:55	1:24	1:53	7	4	1 <sup>1/2</sup>	1 <sup>1/2</sup>	1 <sup>nd</sup>	2 <sup>15</sup>	2 <sup>1</sup>	:26	:29	:28	:29	1:53	6 <sup>150</sup>	Roog	KenB	SnkEysHnvr	Stdyswg	FrssSh
	Sep6	5	Grv <sup>5/8</sup>	16ft	F-nw1920l3s	6300	:27	:55	1:24	1:53	8	7	7 <sup>73/4</sup>	7 <sup>9</sup>	8 <sup>03/4</sup>	8 <sup>4/2</sup>	5 <sup>1/2</sup>	:28	:28	:28	:29	1:51	10 <sup>55</sup>	Roog	KenB	LdyGtLcky	MllrFrmg	Flltnrhnds
	Aug24	8	Sar <sup>9/16</sup>	25ft	Nw1500l3cd	4200	:27	:57	1:26	1:53	6	6	6 <sup>9/12</sup>	6 <sup>3/4</sup>	6 <sup>03/4</sup>	5 <sup>4</sup>	5 <sup>3/4</sup>	:29	:29	:28	:29	1:56	14 <sup>35</sup>	KenB	KenB	FrThShdw	ArkdnmCbb	Jemenar
	Aug11	10	Clntr	20ft	Nw1000l3cd	4000	:28	:58	1:28	1:58	7	6	7 <sup>10/16</sup>	6 <sup>26/16</sup>	5 <sup>03/4</sup>	7 <sup>8</sup>	7 <sup>18</sup>	:30	:29	:29	:32	2:01	19 <sup>45</sup>	GreL	KenB	MrCheesemanInsdAttD	JaysNTigers	
	Aug5	4	Dres	29gd-3	Nw1500l3cd	4900	:29	:53	1:33	2:00	8	5	7 <sup>8/12</sup>	5 <sup>24/16</sup>	5 <sup>03/4</sup>	5 <sup>1/2</sup>	5 <sup>1/2</sup>	:31	:33	:29	:27	2:01	12 <sup>40</sup>	Roog	KenB	LmasDCCnt	BlckRtRsd	JaysNTigers
	Jul20	2	Sar <sup>9/16</sup>	25ft	F-nw1500l3cd	4000	:27	:58	1:26	1:53	6	4	2 <sup>1/2</sup>	2 <sup>1/2</sup>	4 <sup>5</sup>	4 <sup>5</sup>	5 <sup>5</sup>	:27	:30	:29	:29	1:56	2 <sup>80</sup>	Roog	KenB	Jemenar	RysNARckt	LndOIPrds
<b>3</b>	<b>6-1</b>	<b>Travis Henry</b> 170 Light Blue-White (1535-267-253-238-317)										<b>Tr: Patrick Bissett</b> (254-39-28-44-272)										2024	30	5	3	5	\$18,182	
		<b>EYES ON THE PRIZE</b> (4, E, 1:54, 11 \$56,827)										<b>Tanya Lawson, Seaforth, ON</b> ft 1:56.2 Sar <sup>9/16</sup>										2023	23	3	2	4	\$16,774	
	WHITE	B m 5	by Vertical Horizon-Chase My Dream-Mystery Chase	ABYS 5,000																								
	Sep12	1	FldM	22ft	F-op10500clm	6000	:28	:59	1:27	1:53	9	2	4 <sup>4/4</sup>	7 <sup>8</sup>	6 <sup>6/12</sup>	6 <sup>7</sup>	6 <sup>8/4</sup>	:29	:31	:28	:28	1:57	36 <sup>65</sup>	ThiD	BiSP	ExtcDrng	YesImHungry	LaliaBlue
	Sep1	5	Clntr	20ft	Nw1500l3cd	5600	:27	:58	1:27	1:58	8	4	6 <sup>13</sup>	6 <sup>9</sup>	6 <sup>05</sup>	6 <sup>5</sup>	3 <sup>3/4</sup>	:29	:29	:29	:30	1:53	10 <sup>55</sup>	HeTs	BiSP	Dalhousie	LSnCntrl	EysOnThPrz
	Aug25	1	Clntr	29ft	Op9500clm	4200	:27	:59	1:27	1:58	8	2	6 <sup>8/4</sup>	6 <sup>05/4</sup>	5 <sup>23/4</sup>	5 <sup>3</sup>	3 <sup>1</sup>	:29	:30	:28	:30	1:58	3 <sup>50</sup>	RatT	BiSP	ClnkFkn	Shktfyggt	EysOnThPrz
	Aug16	10	Grv <sup>5/8</sup>	23gd-1	F-8000clmcd	4500	:27	:57	1:26	1:56	8	6	7 <sup>10</sup>	15 <sup>05/16</sup>	3 <sup>33/4</sup>	2 <sup>1</sup>	3 <sup>1/4</sup>	:29	:28	:29	:29	1:56	7 <sup>65</sup>	RatT	BiSP	TmsWnltn	RdDrtHSHt	EysOnThPrz
	Aug11	4	Clntr	20ft	F&m-8000clm	3800	:28	:59	1:26	1:59	8	3	3 <sup>3</sup>	2 <sup>1/2</sup>	2 <sup>1/2</sup>	2 <sup>1</sup>	3 <sup>1</sup>	:29	:30	:29	:31	1:59	10 <sup>40</sup>	RatT	BiSP	LimasAlln	BlckRtRsd	EysOnThPrz
	Aug4	1	Clntr	27ft	Op9500clm	4000	:28	:58	1:26	1:56	8	6	3 <sup>3/2</sup>	3 <sup>21/2</sup>	3 <sup>5/4</sup>	3 <sup>7</sup>	5 <sup>8</sup>	:28	:29	:29	:30	1:58	5 <sup>45</sup>	HeTs	BiSP	OddsOnKckff	Brigus	MllnmSlstr
<b>4</b>	<b>5-2</b>	<b>Jason Ryan</b> 170 Green-White (1241-183-194-172-280)										<b>Tr: Mark Goddard</b> (303-17-28-50-162)										2024	35	2	4	4	\$18,693	
		<b>MISS SOPHIA ROSE</b> (5, 5/8, 1:56, 5 \$47,303)										<b>William Brown, Hanover, ON</b> ft 1:56.3 Lon										2023	13	1	0	3	\$10,568	
	GREEN	B m 5	by Big Jim-Mach Denali-Mach	Three																								
	Sep13	5	Grv <sup>5/8</sup>	22ft	F-pop up	6500	:27	:56	1:26	1:56	7	4	6 <sup>8</sup>	6 <sup>07</sup>	2 <sup>3/4</sup>	1 <sup>hd</sup>	1 <sup>h</sup>	:28	:29	:28	:27	1:56	4 <sup>45</sup>	RyaJ	GodM	MssSphRs	FllrPrsnly	ArtstcMdw
	Sep5	7	Wbs <sup>7/8</sup>	20ft	F-pop up	12000	:26	:56	1:24	1:52	10	8	10 <sup>123/4</sup>	10 <sup>14/4</sup>	10 <sup>10/16</sup>	9 <sup>11</sup>	7 <sup>63/4</sup>	:29	:29	:27	:27	1:54	88 <sup>30</sup>	RoLJ	GodM	BtrBDrnN	LadySmith	CmpssrsDV
	Aug31	7	GeoD <sup>5</sup>	25ft	F-8000clmcd	6300	:28	:58	1:27	1:56	8	1	4 <sup>43/4</sup>	4 <sup>03/4</sup>	2 <sup>3/4</sup>	2 <sup>1/4</sup>	2 <sup>15</sup>	:29	:29	:28	:28	1:56	2 <sup>90</sup>	RyaJ	GodM	AcfrtyrDys	MssSphRs	Beth
	Aug26	4	Grv <sup>5/8</sup>	24ft	F-8000clmcd	4200	:26	:56	1:25	1:55	8	5	6 <sup>7/12</sup>	7 <sup>06/12</sup>	5 <sup>03/4</sup>	5 <sup>3/4</sup>	5 <sup>1/12</sup>	:28	:29	:28	:29	1:55	9 <sup>55</sup>	RyaJ	GodM	MyMaserati	CoveBeach	Tmwtsnns
	Aug19	4	Grv <sup>5/8</sup>	16ft	F&m-8000clm	3800	:28	:57	1:26	1:55	7	3	3 <sup>3/4</sup>	2 <sup>1/2</sup>	2 <sup>1/2</sup>	2 <sup>1</sup>	3 <sup>1</sup>	:28	:29	:29	:29	1:56	10 <sup>40</sup>	RyaJ	GodM	SnkEysHnvr	MssSphRs	AnchrSRI
	Aug16	10	Grv <sup>5/8</sup>	23gd-1	F-8000clmcd	4500	:27	:57	1:26	1:56	8	3	3 <sup>3</sup>	3 <sup>3/2</sup>	4 <sup>4</sup>	5 <sup>4</sup>	4 <sup>2/4</sup>	:27	:29	:29	:29	1:56	3 <sup>55</sup>	ThiD	GodM	Tmwtsnns	RdDrtHSHt	EysOnThPrz
<b>5</b>	<b>4-1</b>	<b>J Bradley Harris</b> 155 White-Green-Black (1023-136-145-116-249)										<b>Tr: Mark McCormack</b> (28-2-1-6-162)										2024	11	0	0	3	\$3,111	
		<b>ARTISTIC MEADOW</b> (7, 1:54, 23 \$118,617)										<b>Mark McCormack, Clinton, ON</b> ft 1:52.01 Clntr										2023	33	3	5	2	\$19,740	
	BLACK	B m 10	by Artistic Fella-Regs Last Dance-Fit For Life																									
	Sep13	5	Grv <sup>5/8</sup>	22ft	F-pop up	6500	:27	:56	1:26	1:56	7	2	5 <sup>6/12</sup>	5 <sup>6</sup>	7 <sup>07</sup>	5 <sup>4/4</sup>	3 <sup>1/2</sup>	:28	:29	:29	:28	1:56	19 <sup>10</sup>	HarJ	McCM	MssSphRs	FllrPrsnly	ArtstcMdw
	Sep1	5	Clntr	20ft	Nw1500l3cd	5600	:27	:58	1:27	1:58	8	5	3 <sup>5/12</sup>	3 <sup>3/2</sup>	7 <sup>6</sup>	8 <sup>17</sup>	8 <sup>21</sup>	:28	:30	:30	:33	2:02	41 <sup>00</sup>	FilJ	McCM	Dalhousie	LSnCntrl	EysOnThPrz
	Aug25	1	Clntr	29ft	Nw1500l3cd	4200	:27	:59	1:27	1:58	8	7	7 <sup>10/16</sup>	7 <sup>07</sup>	8 <sup>4/4</sup>	8 <sup>5/4</sup>	8 <sup>5/12</sup>	:29	:30	:28	:30	1:59	42 <sup>50</sup>	HarJ	McCM	ClnkFkn	Shktfyggt	EysOnThPrz
	Aug18	2	Clntr	23ft	Nw1500l3cd	4200	:28	:58	1:27	1:58	8	4	3 <sup>5/12</sup>	4 <sup>3/4</sup>	3 <sup>33/4</sup>	3 <sup>5/4</sup>	3 <sup>4/4</sup>	:29	:30	:29	:30	1:59	19 <sup>85</sup>	ThiD	McCM	VtsAlcS	SttOFFsr	ArtstcMdw
	Aug11	1	Clntr	20ft	Qua-t&p		:29	1:01	1:31	2:01	4	1	1 <sup>1/4</sup>	1 <sup>1/2</sup>	1 <sup>1/2</sup>	1 <sup>1</sup>	1 <sup>nk</sup>	:29	:31	:30	:30	2:01	1 <sup>h</sup>	NbHarJ	McCM	ArstMdw	Bala	StLdsMschf
	Aug4	1	Clntr	27ft	Qua		:29	1:00	1:29	1:59	1	1	3 <sup>9/4</sup>	3 <sup>3/4</sup>	3 <sup>10</sup>	3 <sup>15</sup>	3 <sup>10/12</sup>	:31	:30	:30	:30	2:01	3 <sup>5</sup>	nbDesR	McCM	AzucarJack	MddyScrdt	ArtstcMdw
<b>6</b>	<b>3-1</b>	<b>Daryl Thiessen</b> 171 Black-Blue-White (952-126-148-126-262)										<b>Tr: Ashley Lendvay</b> (180-29-25-18-271)										2024	28	2	4	4	\$16,439	
		<b>BETTOR DEAL</b> (5, 5/8, 1:54, 7 \$51,418)										<b>Gino Toscani, Mount Hope, ON</b> ft 1:54.1 Lon										2023	17	3	3	3	\$20,938	
	YELLOW</																											

WARM-UP PAD

PROBABLE FAVOURITES: 3-6-7-1

ASK FOR HORSE BY PROGRAM NUMBER

Table with columns: Date, Track, Cnd, Var, Class, Purse, 1/4, 1/2, 3/4, Fin, Fld, PP, 1/4, 1/2, 3/4, Str., Fin., 1/4, L1/2, L3/4, L1/4, Time, Odds, Drv, Trn, First, Second, Third. Rows include horses like Southwind Judge, LMC Peanuts Watchn, Wicked Joules, Stonebridge Alien, McSeashore, Country Grace, and Bettor Talker.



# 7

**PACE**  
1 MILE

**\$.20 TRIFECTA & EXACTA & \$.20 SUPERFECTA & DAILY DOUBLE (Races 7 and 8)**  
**PURSE \$10500. HORSES & GELDINGS - NW 2 RACES OR \$30,000 LIFETIME (W-ALL)**

WARM-UP PAD

PROBABLE FAVOURITES: 3-5-2-4

## ASK FOR HORSE BY PROGRAM NUMBER

Date	Track	°CndVar	Class	Purse	1/4	1/2	3/4	Fin	Fld	PP	1/4	1/2	3/4	Str.	Fin.	1/4	L1/2	L3/4	L1/4	Time	Odds	Drv	Trn	First	Second	Third	
<b>1</b>	<b>6-1 LYONS BRUSHMARKS</b> (3, 1:59 <sup>2</sup> , 1 \$43,082) <b>Tr: John Lougheed</b> (13-0-2-2-.136) <b>gd Q2:00<sup>2</sup> Hnvr</b> 2024 13 0 2 2 \$14,876 Breeder: Winbak Farm, Chesapeake City, MD <b>Last 5 Sts - \$1,786</b> <b>Last 10 Sts - \$8,586</b>																										
RED	B g 4 by	Sportswriter-Paints Hall-Blissful Hall	ONT-SEL 31,000																								
Sep12	3	Wbs7/8	20ft	Nw1r8500lcd	17000	:28	:57	1:26 <sup>1</sup>	1:53 <sup>4</sup>	6	5	3 <sup>1</sup> / <sub>4</sub>	3 <sup>3</sup> / <sub>4</sub>	4 <sup>3</sup> / <sub>2</sub>	5 <sup>4</sup>	5 <sup>3</sup> / <sub>4</sub>	:28 <sup>2</sup>	:29 <sup>1</sup>	:29 <sup>1</sup>	:27 <sup>4</sup>	1:54 <sup>3</sup>	35 <sup>5</sup>	BoT	LouJ	StyCIHnvr	MelsLegacy	Minotaur
Sep5	8	Wbs7/8	20ft	Nw1r8500lcd	17000	:26 <sup>1</sup>	:55	1:23	1:52 <sup>2</sup>	10	10	10 <sup>16</sup>	9 <sup>15</sup>	8 <sup>10</sup> / <sub>16</sub>	8 <sup>11</sup> / <sub>16</sub>	7 <sup>11</sup> / <sub>16</sub>	:30	:28	:27	:29 <sup>3</sup>	1:54 <sup>3</sup>	88 <sup>90</sup>	BoT	LouJ	BrsIIIMntn	JlsHnvr	MelsLegacy
Aug29	7	Wbs7/8	19ft	Nw1r8500lcd	17000	:27 <sup>1</sup>	:57	1:26 <sup>4</sup>	1:55	10	5	6 <sup>7</sup> / <sub>4</sub>	5 <sup>3</sup> / <sub>2</sub>	3 <sup>2</sup>	4 <sup>2</sup> / <sub>2</sub>	8 <sup>7</sup> / <sub>4</sub>	:28 <sup>4</sup>	:28 <sup>4</sup>	:29 <sup>3</sup>	:29 <sup>2</sup>	1:56 <sup>3</sup>	37 <sup>80</sup>	CuIT	LouJ	SportyBee	BrsIIIMntn	ZebKrafty
Aug23	5	Wbs7/8	22ft	Qua		:28 <sup>2</sup>	:56 <sup>2</sup>	1:24 <sup>3</sup>	1:52 <sup>2</sup>	3	3	3 <sup>4</sup> / <sub>4</sub>	3 <sup>3</sup>	3 <sup>3</sup>	3 <sup>4</sup> / <sub>4</sub>	6 <sup>9</sup> / <sub>2</sub>	:29 <sup>3</sup>	:27 <sup>2</sup>	:28 <sup>1</sup>	:29	1:54 <sup>1</sup>	nb	SorA	LouJ	LousWorld	FourByFour	StnsEddy
Aug17	1	Hnvr	23gd-2	Qua		:29 <sup>2</sup>	:1:00	1:30 <sup>1</sup>	2:00 <sup>2</sup>	1	1	1 <sup>1</sup> / <sub>2</sub>	1 <sup>2</sup>	1 <sup>1</sup> / <sub>2</sub>	1 <sup>1</sup> / <sub>2</sub>	1 <sup>1</sup> / <sub>4</sub>	:29 <sup>2</sup>	:30 <sup>3</sup>	:30 <sup>1</sup>	:30 <sup>1</sup>	2:00 <sup>2</sup>	nb	GreL	LouJ	LynsBrsHmks	WhstISht	
May9	7	FImD	14ft	Nw2r15000l	7800	:28 <sup>2</sup>	:57 <sup>3</sup>	1:26 <sup>2</sup>	1:55 <sup>3</sup>	8	8	3 <sup>3</sup> / <sub>4</sub>	3 <sup>3</sup>	5 <sup>3</sup>	4 <sup>2</sup> / <sub>2</sub>	3 <sup>1</sup> / <sub>2</sub>	:29 <sup>1</sup>	:29	:28 <sup>4</sup>	:28 <sup>4</sup>	1:55 <sup>4</sup>	38 <sup>70</sup>	CuIT	LouJ	GgtygytgytyDnckEhskppr	LynsBrsHmks	
Apr25	5	Wbs7/8	9ft	Nw1r7500lcd	17000	:27 <sup>1</sup>	:56 <sup>4</sup>	1:26 <sup>1</sup>	1:53 <sup>4</sup>	9	2	6 <sup>6</sup> / <sub>4</sub>	6 <sup>1</sup> / <sub>4</sub>	5 <sup>3</sup>	5 <sup>3</sup> / <sub>4</sub>	9 <sup>7</sup> / <sub>4</sub>	:28 <sup>2</sup>	:29 <sup>4</sup>	:28 <sup>3</sup>	:28 <sup>2</sup>	1:55 <sup>1</sup>	68 <sup>20</sup>	BoT	LouJ	AlrtIrt	BtOnSnshn	DabOcol
Apr18	5	Wbs7/8	12ft	Nw1r7500lcd	17000	:27 <sup>3</sup>	:57 <sup>1</sup>	1:26 <sup>3</sup>	1:54 <sup>1</sup>	10	4	3 <sup>1</sup> / <sub>4</sub>	3 <sup>3</sup>	5 <sup>3</sup> / <sub>4</sub>	5 <sup>2</sup> / <sub>4</sub>	5 <sup>2</sup> / <sub>4</sub>	:28	:29 <sup>4</sup>	:29 <sup>3</sup>	:27 <sup>1</sup>	1:54 <sup>3</sup>	74 <sup>05</sup>	MacB	LouJ	BthbchYnk	MattsBank	DabOcol
<b>2</b>	<b>3-1 BROOKLYN STRONG</b> (3, 1:56 <sup>1</sup> -Q, 1 \$21,002) <b>Tr: Daniel Obrian</b> (28-2-3-2-.154) <b>ft Q1:56<sup>1</sup> FImD</b> 2024 8 1 0 0 \$4,882 Breeder: Winbak Farm, Chesapeake City, MD <b>Last 5 Sts - \$4,882</b> <b>Last 10 Sts - \$6,922</b>																										
BLUE	B g 3 by	Shadow Play-Kims The Best-Betterhancheddar	LEX-SEL 22,000																								
Sep13	3	Gvr7/8	22ft	Nw2r30000lcd	9000	:27	:57	1:25 <sup>1</sup>	1:53 <sup>3</sup>	7	2	4 <sup>3</sup> / <sub>4</sub>	4 <sup>4</sup> / <sub>2</sub>	4 <sup>3</sup> / <sub>4</sub>	4 <sup>3</sup> / <sub>4</sub>	6 <sup>4</sup>	:28	:29 <sup>4</sup>	:28 <sup>1</sup>	:28 <sup>1</sup>	1:54 <sup>2</sup>	34 <sup>25</sup>	ObrD	ObrD	HazeeCoast	BtOnSnshn	SthwndInfsn
Sep7	1	FImD	19ft	Qua		:29 <sup>2</sup>	:59 <sup>1</sup>	1:28 <sup>2</sup>	1:57 <sup>3</sup>	9	7	2 <sup>2</sup> / <sub>4</sub>	2 <sup>3</sup> / <sub>4</sub>	2 <sup>2</sup> / <sub>4</sub>	2 <sup>3</sup> / <sub>4</sub>	3 <sup>6</sup> / <sub>2</sub>	:30	:29 <sup>4</sup>	:29	:30	1:58 <sup>4</sup>	nb	ObrD	ObrD	MjrLnG	HoneyJoe	BklynStrng
Aug5	6	Gvr7/8	25ft	Onss-rs	20000	:26 <sup>1</sup>	:56 <sup>3</sup>	1:23 <sup>1</sup>	1:52 <sup>2</sup>	9	7	7 <sup>9</sup> / <sub>16</sub>	5 <sup>3</sup> / <sub>2</sub>	6 <sup>9</sup>	7 <sup>12</sup> / <sub>16</sub>	9 <sup>26</sup> / <sub>16</sub>	:28 <sup>3</sup>	:28 <sup>3</sup>	:27 <sup>4</sup>	:32 <sup>1</sup>	1:57 <sup>3</sup>	93 <sup>40</sup>	ObrD	ObrD	CntryKmd	ChlkHnvr	McWkdTm
Jul30	2	GeoD7/8	22ft	Nw1r5000l	8500	:29 <sup>2</sup>	:59 <sup>1</sup>	1:27 <sup>2</sup>	1:58 <sup>3</sup>	7	5	2 <sup>1</sup> / <sub>2</sub>	3 <sup>2</sup>	3 <sup>2</sup> / <sub>4</sub>	3 <sup>1</sup> / <sub>2</sub>	1 <sup>4</sup>	:29 <sup>4</sup>	:29 <sup>4</sup>	:28 <sup>1</sup>	:30 <sup>4</sup>	1:58 <sup>3</sup>	11 <sup>00</sup>	ObrD	ObrD	BklynStrng	WnnsPhnx	AlwaysBSwtst
Jul2	4	GeoD7/8	21ft	Nw1r5000l	7900	:28 <sup>2</sup>	:57 <sup>2</sup>	1:26 <sup>1</sup>	1:56 <sup>4</sup>	4	2	1 <sup>4</sup>	3 <sup>2</sup> / <sub>2</sub>	3 <sup>2</sup> / <sub>2</sub>	3 <sup>2</sup> / <sub>4</sub>	4 <sup>8</sup> / <sub>4</sub>	:28 <sup>3</sup>	:29 <sup>1</sup>	:28 <sup>4</sup>	:31 <sup>4</sup>	1:58 <sup>2</sup>	4 <sup>85</sup>	ObrD	ObrD	RJRing	Montrego	Cheyenne
Jun25	4	Wbs7/8	21ft	Nw1r7500lcd	17000	:28 <sup>2</sup>	:57 <sup>3</sup>	1:25	1:53 <sup>1</sup>	8	7	8 <sup>10</sup> / <sub>16</sub>	8 <sup>12</sup> / <sub>16</sub>	6 <sup>1</sup> / <sub>4</sub>	7 <sup>6</sup>	7 <sup>13</sup> / <sub>16</sub>	:30 <sup>4</sup>	:29 <sup>4</sup>	:28 <sup>2</sup>	:29 <sup>1</sup>	1:56 <sup>2</sup>	86 <sup>50</sup>	ObrD	ObrD	TheVicar	BrotherJim	RcktFrght
Jun18	5	Wbs7/8	28ft	Nw1r7500lcd	17000	:27 <sup>2</sup>	:56	1:24 <sup>3</sup>	1:53 <sup>2</sup>	10	10	6 <sup>9</sup> / <sub>16</sub>	6 <sup>9</sup>	8 <sup>11</sup> / <sub>16</sub>	9 <sup>13</sup> / <sub>16</sub>	8 <sup>10</sup>	:28 <sup>3</sup>	:29 <sup>1</sup>	:29	:28 <sup>1</sup>	1:55 <sup>2</sup>	97 <sup>10</sup>	ObrD	ObrD	BSonny	RcktFrght	Gansbaai
Jun11	7	Wbs7/8	18ft	Nw1r7500lcd	17000	:26 <sup>1</sup>	:56 <sup>4</sup>	1:24 <sup>4</sup>	1:52 <sup>4</sup>	10	2	5 <sup>8</sup> / <sub>16</sub>	5 <sup>8</sup> / <sub>16</sub>	7 <sup>6</sup> / <sub>16</sub>	7 <sup>5</sup> / <sub>2</sub>	7 <sup>6</sup> / <sub>2</sub>	:28 <sup>2</sup>	:30 <sup>1</sup>	:27 <sup>2</sup>	:28	1:54	42 <sup>20</sup>	ObrD	ObrD	ImACaptain	SndctrHnvr	BSonny
<b>3</b>	<b>2-1 SOUTHWIND INFUSION</b> (3, 5/8, 1:53 <sup>2</sup> , 4 \$26,965) <b>Tr: Ashley Lendvay</b> (180-29-25-18-.271) <b>ft 1:53<sup>2</sup> Gvr7/8</b> 2024 23 4 4 1 \$26,965 Breeder: Southwind Farms Llc, Pennington, NJ <b>Last 5 Sts - \$1,720</b> <b>Last 10 Sts - \$8,910</b>																										
WHITE	B g 3 by	Always B Miki-Southwind Inertia-Captaintreacherous	LEX-SEL 52,000																								
Sep13	3	Gvr7/8	22ft	Nw2r30000lcd	9000	:27	:57	1:25 <sup>1</sup>	1:53 <sup>3</sup>	7	3	2 <sup>1</sup> / <sub>2</sub>	2 <sup>1</sup> / <sub>2</sub>	3 <sup>3</sup> / <sub>4</sub>	3 <sup>2</sup>	3 <sup>3</sup>	:27 <sup>1</sup>	:30	:28 <sup>2</sup>	:28	1:53 <sup>3</sup>	2 <sup>50</sup>	SorA	LenA	HazeeCoast	BtOnSnshn	SthwndInfsn
Sep6	9	Gvr7/8	16ft	Nw2r30000l	8500	:26 <sup>1</sup>	:55 <sup>1</sup>	1:24	1:52 <sup>2</sup>	9	3	8 <sup>9</sup> / <sub>16</sub>	7 <sup>7</sup>	8 <sup>7</sup> / <sub>16</sub>	8 <sup>10</sup>	6 <sup>12</sup> / <sub>16</sub>	:28 <sup>3</sup>	:28	:29	:29 <sup>1</sup>	1:54 <sup>4</sup>	57 <sup>00</sup>	MaPa	LenA	GndIThBy	WtchngSnst	Chesterman
Aug30	10	Gvr7/8	24ft	Nw2r30000lcd	8000	:26	:55	1:23	1:52	9	3	2 <sup>1</sup> / <sub>4</sub>	3 <sup>1</sup> / <sub>2</sub>	2 <sup>2</sup>	2 <sup>2</sup>	4 <sup>3</sup> / <sub>4</sub>	:26 <sup>2</sup>	:28 <sup>4</sup>	:28 <sup>1</sup>	:29 <sup>2</sup>	1:52 <sup>4</sup>	19 <sup>35</sup>	SorA	LenA	GndIThBy	WtchngSnst	Chesterman
Jul26	6	Gvr7/8	24ft	Nw2r30000lcd	8000	:26 <sup>1</sup>	:56 <sup>1</sup>	1:24	1:52 <sup>1</sup>	6	6	3 <sup>3</sup>	3 <sup>2</sup>	2 <sup>0</sup> / <sub>4</sub>	4 <sup>3</sup> / <sub>4</sub>	6 <sup>8</sup> / <sub>16</sub>	:27 <sup>2</sup>	:28 <sup>4</sup>	:27 <sup>4</sup>	:29 <sup>1</sup>	1:53 <sup>2</sup>	33 <sup>80</sup>	SorA	LenA	PrCntrl	OnyxBovino	DAMcDreamy
Jul19	6	Gvr7/8	20ft	Nw2r30000lcd	8000	:27	:56 <sup>1</sup>	1:24 <sup>1</sup>	1:53 <sup>1</sup>	7	2	5 <sup>7</sup> / <sub>4</sub>	5 <sup>8</sup> / <sub>4</sub>	5 <sup>5</sup>	5 <sup>5</sup>	6 <sup>6</sup>	:28 <sup>3</sup>	:29	:27 <sup>3</sup>	:29 <sup>1</sup>	1:54 <sup>2</sup>	11 <sup>00</sup>	LagB	LenA	HrbtAmbrs	RJRing	StyCIHnvr
Jul12	6	Gvr7/8	24ft	Nw2r30000l	8000	:27 <sup>2</sup>	:55 <sup>3</sup>	1:25	1:54	8	7	7 <sup>9</sup> / <sub>16</sub>	6 <sup>9</sup> / <sub>16</sub>	4 <sup>3</sup> / <sub>4</sub>	5 <sup>3</sup> / <sub>4</sub>	5 <sup>2</sup>	:29 <sup>3</sup>	:27 <sup>4</sup>	:28 <sup>1</sup>	:30	1:55 <sup>3</sup>	20 <sup>80</sup>	HarJ	LenA	WldChHllyDnckEhskppr	FlyWtchr	
Jul5	2	Gvr7/8	25ft	Nw2r30000l	8000	:27 <sup>1</sup>	:56 <sup>3</sup>	1:25	1:53 <sup>2</sup>	5	1	2 <sup>1</sup> / <sub>2</sub>	2 <sup>1</sup> / <sub>2</sub>	3 <sup>1</sup> / <sub>2</sub>	2 <sup>2</sup>	2 <sup>2</sup>	:27 <sup>2</sup>	:29 <sup>2</sup>	:28 <sup>2</sup>	:28 <sup>1</sup>	1:53 <sup>2</sup>	2 <sup>90</sup>	SorA	LenA	OnyxBovino	SthwndInfsn	DnckEhskppr
Jun28	9	Gvr7/8	19ft	Nw15000lcd	7500	:27	:56 <sup>1</sup>	1:24 <sup>4</sup>	1:53 <sup>2</sup>	9	5	2 <sup>2</sup> / <sub>4</sub>	2 <sup>1</sup> / <sub>2</sub>	2 <sup>1</sup> / <sub>2</sub>	2 <sup>2</sup>	1 <sup>3</sup>	:27 <sup>2</sup>	:29	:28 <sup>3</sup>	:28 <sup>2</sup>	1:53 <sup>2</sup>	32 <sup>55</sup>	SorA	LenA	SthwndInfsn	StyCIHnvr	GldtrSBg
<b>4</b>	<b>4-1 BETTER THAN NEVER</b> (3, 5/8, 1:55, 4 \$19,065) <b>Tr: Michael Horner</b> (222-32-25-20-.236) <b>ft 1:55 Gvr7/8</b> 2024 14 1 2 0 \$9,090 Breeder: Beechwood Acres, Burlington, Mark Horner, St Marys, ON <b>Last 5 Sts - \$4,315</b> <b>Last 10 Sts - \$5,765</b>																										
GREEN	B c 3 by	Betterhancheddar-Joywriter-Sportswriter																									
Sep13	3	Gvr7/8	22ft	Nw2r30000lcd	9000	:27	:57	1:25 <sup>1</sup>	1:53 <sup>3</sup>	7	5x	7 <sup>14</sup> / <sub>16</sub>	7 <sup>9</sup> / <sub>16</sub>	7 <sup>8</sup> / <sub>16</sub>	7 <sup>7</sup> / <sub>16</sub>	7 <sup>6</sup> / <sub>16</sub>	:30	:28 <sup>4</sup>	:28	:28	1:54 <sup>4</sup>	10 <sup>50</sup>	HorM	HorM	HazeeCoast	BtOnSnshn	SthwndInfsn
Sep6	8	Gvr7/8	16ft	Nw15000lcd	8000	:27 <sup>1</sup>	:56 <sup>1</sup>	1:25	1:54 <sup>4</sup>	6	4	6 <sup>8</sup> / <sub>16</sub>	6 <sup>1</sup> / <sub>4</sub>	6 <sup>0</sup> / <sub>4</sub>	6 <sup>3</sup> / <sub>4</sub>	4 <sup>3</sup> / <sub>4</sub>	:28 <sup>2</sup>	:29 <sup>1</sup>	:28 <sup>1</sup>	:29 <sup>1</sup>	1:54 <sup>3</sup>	22 <sup>95</sup>	HorM	HorM	DcHnvr	MgcIA	ImACaptain
Aug16	2	Gvr7/8	23gd-1	Nw2r17000l	7500	:28	:55 <sup>4</sup>	1:24 <sup>3</sup>	1:53 <sup>4</sup>	7	1	4 <sup>8</sup> / <sub>16</sub>	4 <sup>7</sup> / <sub>16</sub>	4 <sup>9</sup>	6 <sup>10</sup>	6 <sup>14</sup>	:29 <sup>4</sup>	:27 <sup>2</sup>	:28 <sup>2</sup>	:31	1:56 <sup>3</sup>	6 <sup>25</sup>	HorM	HorM	TimelyBet	BrghtsDms	ImACaptain
Aug9	8	Gvr7/8	20ft	Nw2r15000l	7500	:27 <sup>2</sup>	:56 <sup>3</sup>	1:25 <sup>1</sup>	1:54 <sup>2</sup>	7	1	2 <sup>0</sup> / <sub>1</sub>	1 <sup>1</sup> / <sub>2</sub>	1 <sup>4</sup>	1 <sup>5</sup>	5 <sup>4</sup> / <sub>4</sub>	:28	:28 <sup>3</sup>	:28 <sup>3</sup>	:30	1:55 <sup>1</sup>	2 <sup>65</sup>	HorM	HorM	AllBtsOnRd	VncndBIChp	ImACaptain
Aug2	4	Gvr7/8	25ft	Nw1r8800lcd	6600	:28 <sup>2</sup>	:58	1:26 <sup>4</sup>	1:55	5	1	3 <sup>3</sup>	3 <sup>3</sup> / <sub>4</sub>	2 <sup>0</sup> / <sub>1</sub>	2 <sup>1</sup> / <sub>4</sub>	1 <sup>8k</sup>	:29	:29 <sup>4</sup>	:28 <sup>1</sup>	:28	1:55 <sup>1</sup>	6 <sup>150</sup>	SorA	LenA	BtrThnHnvr	Minotaur	SmknHDD
Jul26	4	Gvr7/8	24ft	Nw17500l	7500	:28 <sup>1</sup>	:57 <sup>4</sup>	1:25 <sup>4</sup>	1:54	5	2	4 <sup>6</sup> / <sub>16</sub>	3 <sup>3</sup> / <sub>2</sub>	2 <sup>0</sup> / <sub>1</sub>													



## Grand River Drivers by Wins June 5, 2024 - Sept 13, 2024

DRIVERS	minimum of 20 starts				MONEY	URS	WIN
	Sts	1st	2nd	3rd			
Henry Travis J	254	48	44	46	306,507	.3456	19%
Ryan Jason D	230	38	42	37	288,584	.3203	17%
Macdonald Brett A	211	35	31	30	228,065	.2949	17%
Sorrie Austin	152	23	17	22	144,337	.2617	15%
Harris J Bradley	170	20	31	28	165,514	.2739	12%
Ratchford Todd	87	20	11	9	107,650	.3346	23%
Haughan Anthony P	164	17	19	19	125,015	.2066	10%
Kelly Colin	100	17	8	11	100,452	.2511	17%
Young Scott R	82	15	7	11	105,807	.2751	18%
Cullen Travis A	69	14	9	7	88,600	.3092	20%
Fillion Samuel	122	13	21	21	112,832	.2596	11%
Roy Louis-philippe	43	12	10	4	138,166	.4393	28%
Coulter Scott	152	11	20	23	106,088	.1959	7%
Hudon Steven	66	10	5	12	62,258	.2542	15%
Mcclure Bob	34	10	4	5	140,430	.4085	29%
Moore Tyler	65	10	10	3	68,696	.2547	15%
Jamieson Jody C	22	7	6	3	234,044	.5152	32%
Macdonald James A	30	6	6	3	229,625	.3444	20%
Renaud Jean Bernard	53	6	9	5	46,218	.2390	11%
Rooney Garrett L	54	6	8	8	46,608	.2428	11%
Thiessen Daryl	74	5	12	8	50,727	.1937	7%
Henry Trevor S	20	4	1	3	115,898	.2778	20%
Hudon Phillippe	54	4	10	5	46,427	.2078	7%
Richardson Bruce M	37	4	4	6	34,180	.2222	11%
Horner Michael A	21	3	2	2	18,750	.2275	14%

## Grand River Trainers by Wins June 5, 2024 - Sept 13, 2024

TRAINERS	minimum of 20 starts				MONEY	URS	WIN
	Sts	1st	2nd	3rd			
Lendvoy Ashley	65	14	7	10	72,276	.3265	22%
Dupont Marie Helene	24	11	7	2	77,600	.6481	46%
Steaey Shawn F	53	11	11	10	91,628	.3857	21%
Walker Julie A	64	11	13	5	70,793	.3108	17%
Bossence Kyle J	39	10	3	6	63,821	.3504	26%
Cullen Jodie M	54	10	6	9	60,208	.3025	19%
Mcnaair R Gregg	42	10	6	10	143,661	.3968	24%
Etsell Mark G	29	9	3	1	115,579	.3793	31%
Toscani Laura	53	8	3	8	47,442	.2327	15%
Fellows Robert Kyle	43	7	10	7	111,353	.3463	16%
Beaton Anthony B	32	6	5	8	134,020	.3576	19%
Moreau Richard	29	6	4	3	33,804	.3180	21%
Boyd Rod V	23	5	2	4	26,364	.3237	22%
Crone Meg J	34	5	2	4	36,304	.2190	15%
Goddard Mark A	47	5	4	9	35,479	.2175	11%
Holliday David L	23	5	3	2	29,539	.3188	22%
Horner Michael A	33	5	5	2	33,290	.2559	15%
Ratchford Mary M	23	5	5	3	29,733	.3816	22%
Dupuis Matthew D	51	3	6	8	38,347	.1765	6%
Hollingsworth Benjamin	27	3	4	5	26,643	.2551	11%
Kwietniowski Michael J	25	3	6	4	25,457	.3067	12%
Lester Brett M	27	3	2	8	22,640	.2510	11%
Lindsey Donald	32	3	0	5	16,970	.1458	9%
Macintosh Blake C	30	3	5	1	123,925	.2037	10%
Hudon Phillippe	20	2	4	4	17,749	.2778	10%

## Winning Post Positions June 5, 2024 - Sept 13, 2024

	Pace								
	1	2	3	4	5	6	7	8	9
Starts	272	272	272	272	270	254	198	110	95
Wins	52	34	26	48	54	32	14	4	8
Win%	19.1	12.5	9.6	17.6	20.0	12.6	7.1	3.6	8.4

	Trot								
	1	2	3	4	5	6	7	8	9
Starts	133	133	133	133	133	126	98	62	49
Wins	16	17	26	23	22	16	3	7	3
Win%	12.0	12.8	19.5	17.3	16.5	12.7	3.1	11.3	6.1



## Winning Favourite June 5, 2024 - Sept 13, 2024

Races	405
Favourites or co-Favourites	410
Favourites finishing 1st	203 49.5%
Favourites finishing 2nd	70 17.1%
Favourites finishing 3rd	54 13.2%
Favourites finishing 4th - 11th	83 20.2%

## Winning Trips

June 5 to Sept 13, 2024. Includes 405 races. Table shows the position of the winner at 1/2 and 3/4 points. Percentages not indicated for 4th through 9th as not all races had full fields.

	1	2	3	4	5	6	7	8	9
1/2	201	45	51	53	33	16	4	2	0
%	49.6	11.1	12.6						
3/4	235	73	51	24	12	6	4	0	0
%	58.0	18.0	12.6						

Pari-mutuel wagering is conducted by:  
**Woodbine Entertainment Group**

Racing is Conducted by:

## Grand River Raceway Corporation

7445 Wellington County Rd. 21

Elora, ON • N0B 1S0

Admin: (519) 846-5455

Email: info@grandriverraceway.com

Web: www.grandriverraceway.com

### Grand River Raceway Corporation

Chair ..... D. Whale  
Director ..... C. Lindsay  
Director ..... B. Ross  
Director ..... K. Giddy  
Director ..... I. Scott  
Director ..... D. Key

### Racing Officials

Associate Judge ..... Emma Pote  
Associate Judge ..... Andrew VantWout  
Associate Judge ..... Gary Patterson  
Associate Judge ..... K. Gillespie  
Track Veterinarian ..... P. Meyers D.V.M  
Race Secretary ..... Jim Gillespie  
Race Office ..... C. Pattison  
Starter ..... M. Strome  
Paddock Judge ..... L. Jackson  
Charter ..... R. Cudmore  
Announcer ..... G. Guy  
Photographer ..... Tiffany Chantel Photography (519-889-1049)

### Management Team

Raceway Manager ..... J. MacDonell  
Vice President - Operations ..... K. Giddy  
Vice President - Finance ..... I. Scott  
Facilities Manager ..... D. McCaig  
Human Resources Manager ..... R. Edmondson

### A.G.C.O.

Chair ..... D. Forestell  
Vice Chair ..... P. Stoyan  
Member ..... H. Reinhart  
Member ..... N. Desai  
Member ..... D. McLarty  
Member ..... C. Vaccarino

### AGCO ADMINISTRATION

CEO & Registrar ..... Dr. K. Schnarr  
Chief Operating Officer ..... D. Phillips  
Deputy Chief Operating Officer ..... L. Locke  
Director Regulatory Compliance - Racing Operations ..... K. Cunningham  
Director Regulatory Compliance - Racing Operations ..... J. Wannamaker  
Senior Manager Racing ..... T. Durand  
Manager Racing ..... D. Morretti  
Senior Manager, Veterinarian Services ..... Dr. A. Chambers  
Manager Veterinarian Services ..... P. Chesterfield

### First Turn Printing

The Official Program is published each racing day by First Turn Printing Office: 12 Dawson Road, Unit 3 Orangeville, Ontario, Canada. L9W 2W2. Telephone (519) 938-1523. © 2023 First Turn Printing. All rights reserved. Material printed herein may not be reproduced, retransmitted, or stored in any data retrieval system without the written permission of the copyright owners. Opinions expressed and information published herein are not to be construed as encouragement to wager. Every effort is made to ensure the accuracy of the information contained herein but First Turn Printing and the racing association cannot accept any responsibility for loss or inconvenience attributed to errors or omissions.

### Children

Children are welcome at Grand River Raceway, but must be under adult supervision at ALL times.

### Racing Policy – Grand River Raceway 'live' racing programs only:

If less than 5 races have run, guests may exchange the program for another 'live' program. The actual canceled program must be presented for exchange. No refunds.

If 5 or more races have run, there will be no exchange.

### General Operations

Supervision of the pari-mutuel betting and drug control services is provided by the Canadian Pari-Mutuel Agency (CPMA), a division of Agriculture Canada. All pools are calculated and distributed in accordance with these Regulations. All tickets should be held until the result of the race is declared official. No minor shall purchase or cash a pari-mutuel ticket. Approximate odds represent the probable pay-out price of the win pool at the time they are posted and have no bearing on the pay-out price for any other pool. Where approximate odds for any horse are posted as "1-9", the pay-out price based on a \$2 bet on the win pool may be as low as \$2.10. All tickets should be kept until the result of the race is declared official. No ruling made by the Judges or the Alcohol And Gaming Commission of Ontario (AGCO) with regard to distribution of purse money or the placing of horses in the order of finish, after the race has been declared official shall have any bearing on the pay-out prices or distribution of pari-mutuel pools. In the case of foreign separate pool betting, the rules of racing are those of the governing body that regulates the race.

### Cancellation Policy

In the event that cancellation of races should result for any reason after four races have been run, no refunds or issuance of rain checks will be made. If a cancellation results before the completion of four races, and upon producing the day's Official Program at the seller's booth, a next day's racing program will be exchanged.

### Refunds

Subject to the provisions of the Federal Regulations, all monies bet in all pools on a race are refunded in the event that the race is canceled, declared off, declared no contest or postponed beyond the racing card for which it was scheduled. Subject to the Regulations, all monies bet on a horse are refunded if the horse is a late scratch or does not receive a fair start. Where a horse that is part of an entry is a late scratch and at least one horse of that entry or mutual field starts in the race, all tickets purchased on that entry or mutual field remain valid, and the purchase price of any such ticket shall not be refunded.

### Fair Start

The starter shall have control of the horses from the formation of the post parade until a start has been determined. For purpose of this rule, the determination of the start is when the horses have passed the starting point and have been released by the starter. 22.03 (h) There shall be no recall after the horses have been released by the starter. 22.03 (i) The starter shall endeavour to get all horses away in position and on gait. The starter shall only sound a recall for the following reasons: (i) A horse scores ahead of the starting gate; (ii) There is interference before the horses have reached the starting point; (iii) A horse has broken equipment, which the starter notices; (iv) A horse falls before the starting point; (v) A horse coming to the starting gate in the wrong position; (vi) A malfunction of the starting gate or in the interests of safety. 22.03 (l) If a horse has not reached the Fair Start Pole when the horses are released at the starting point by the starter, the judges shall cause the "inquiry" sign to be displayed immediately.

### Breaking Rule

When a horse breaks from its gait in a race the driver shall: (a) take the horse to the outside of other horses where clearance exists and; (b) properly attempt to pull the horse to its gait; (c) lose ground while on the break. If there has been no violation of (a), (b) or (c) above, the horse shall not be set back unless a contending horse on its gait is lapped on the hind quarter of the breaking horse at the finish, however, notwithstanding the foregoing, if interference caused by another driver(s) or horse(s) has caused the horse to be on a break at the finish, the judges may, in their discretion determine not to set the horse back even if a contending horse on its gait is lapped on the hind quarter of the breaking horse at the finish. The judges may set any horse back one or more places if, in their judgment, any of the above violations have been committed, or if the horse goes on an extended break, and the driver may be penalized.

### Entry or Field in an Exacta

Exacta pools on races that have an entry (1 and 1A and/or 2 and 2B) or mutual field (14f, 15f...) will not offer a wager combining both halves of the same betting interest (ie. 1-1, 2-2, field-field). If the same betting interest finishes first and second, the exactor payout will be on those horses finishing first and third.

### Daily Double & Late Double Betting

Where the daily double feature is operated, the daily double is a betting transaction in which the purchaser of a ticket undertakes to select the winners of each of the two races specified for the daily double and that if the purchaser of a daily double ticket fails to pick the winner of the first half of the daily double his bet is void and that all tickets in the second half of the daily double not coupled with the declared official winner of the first half of the daily double are void no matter what circumstances might affect the programmed running of the second half of the daily double. The daily double is operated as an entirely separate pool and is not affected by wagering in other pools operated on the daily double races. Should a horse or horses (not coupled with a starter) be excused from starting in the second race of the daily double after the first race of the daily double has been declared official, holders of all daily double tickets on such horses, coupled with the winner of the daily double race, shall participate in the Consolation Double pool.

### Exacta Betting

Where the exacta feature is operated, the exacta is a betting transaction in which the purchaser of a ticket undertakes to select the first two horses to finish, in the exact order of finish, in the race on which the feature is operated.

### Trifecta Betting

A Trifecta bet is a betting transaction in which the purchaser of a ticket undertakes to select the first three horses representing different betting interests to finish, in the exact official order of finish, in the race on which the feature is operated.

### Superfecta Betting

A Superfecta bet is a betting transaction in which the purchaser of a ticket undertakes to select the first four horses representing different betting interests to finish, in the exact official order of finish, in the race on which the feature is operated.

### Super Hi-5 Betting

The Super Hi-5 wager is a betting transaction in which the purchaser of a ticket undertakes to select the first five horses representing different betting interests to finish, in the exact official order of finish, in the race on which the feature is operated. In the event no one correctly selects all five winners in order, 100 per cent of the net pool will be carried over to the next Super Hi-5 race.

### Pick 3 or Pick 4 Betting

The Pick 3 & Pick 4 bets are betting transactions in which a purchaser of a ticket undertakes to select the official winners of each of three or four successive races specified for the Pick 3 & Pick 4 respectively. Winning tickets for the Pick 3 & Pick 4 are determined in the following sequence: A) winners of all legs, B) most winners, then refund. If there is a change of surface in any leg that is NOT made known to the public prior to wagering for that pool closing, that leg will pay on all runners. If there are no winners in any leg of a pool, the entire pool is refunded.

### Pick 5 Betting

The Pick 5 bet is a betting transaction in which a purchaser of a ticket undertakes to select the official winners of each of five successive races specified for the Pick 5 respectively. If no one has correctly selected all 5 winners, the entire net pool is carried over to the next available PICK 5.

### Pick 3, Pick 4 & Pick 5 Scratches

In the event a Pick 3, Pick 4 or Pick 5 ticket designates as a selection a horse which is scratched, excused or determined by the Stewards/Judges to be a non-starter in any of the races comprising the Pick 3, Pick 4 or Pick 5 the favourite, as evidenced by the amount wagered in the win pool at the time of the start of the race in which the scratch occurred, will be substituted for the non-starting selection. In the event that the money bet in the win pool for two or more favourites is identical, the selection with the lowest program number shall be substituted for the non-starting selection. However, if a scratch occurs in any leg of the Pick 3, Pick 4 or Pick 5 pools before the pool is closed, a ticket including the scratched horse may be cancelled.

### Pari-Mutuel Deductions

The Association deducts and retains the following percentages from wagers placed on Grand River Raceway in Ontario which are then shared with the horsepeople. Horsepeople receive a further 2% on all wagers and an additional 2% on trifecta wagering. The Ontario Government retains .5% on all bets placed in Ontario. The Canadian Government retains .8% on all wagers placed in Canada.

Win, Place, Show: 13.65%, Exacta: 17.2%, Trifecta: 21.7%, Super: 23%; all other pools: 11.7%.

### Allowances

Allowances for Ontario Sired horses at Signature tracks is 50% and are based on the condition of the class. Allowances for purse earnings at Signature tracks are 25% for fillies and mares (vs colts and geldings) and are based on the conditions of the race only.

### Rule 7.15

No association shall allow a person under 18 years of age to purchase or cash a ticket. For the purposes of this rule, a "ticket" is defined as a receipt or voucher that is issued by an association for one or more bets on a race or races. The association shall ensure that signs are clearly posted in all areas, or in application forms, where tickets are purchased or cashed, advising the public of the age restriction.

### Advance Notice Of New Bet Cancellation Options

No claim shall be considered for tickets thrown away, lost, changed, destroyed or mutilated beyond recognition. Payment of wagers will only be made upon presentation of valid parimutuel tickets. The following Bet Cancellation Policy is in effect at Grand River Raceway and the Grand River Teletheatre site. A bet can be cancelled up until "stop betting" for the following reasons: 1) A wrong ticket (even after you have left the mutual window) e.g. wrong track; 2) A change in race surface (turf - dirt) or race distance; 3) A scratch of part of an entry (1-1A) or part of a field Self Serve Cancellation; Cancellation of Self Serve Tickets via mutual sellers (see below)

### Mutuel Teller Cancellation

1) Open cancellation: ticket must be cancelled prior to stop betting of the race.  
2) For tickets of \$100 or more you must write your name, address and telephone number on the back of the ticket before requesting the cancellation. You will also be required to present 1 piece of photo identification to the teller.

### When your bets cannot be cancelled:

- 1) After a pool has been closed (ie betting has been stopped)
- 2) For tickets of \$100 or more, if photo ID is not presented or a full name, address and telephone number has not been legibly written on the back of the ticket
- 3) Under circumstances affecting the integrity of a pool or display of pari-mutuel data
- 4) An officer or the association refuses to cancel and refund the bet under subsection 57

### Children

Children are welcome at Grand River Raceway, but must be under adult supervision at ALL Times.