

FRIDAY, AUGUST 9, 2024

Official Program

\$2.50 taxes Included

# HARNESS RACING

FROM



POST TIME 6:30 PM

HOME OF THE BRAND NEW 5/8-MILE TRACK!

# EXPECT AN EXPERIENCE.

[GRANDRIVERRACEWAY.COM](http://GRANDRIVERRACEWAY.COM)

## Grand River Raceway Entries

### HORSES

ABC	9
ABOUT A BOY	9
ACEFORTYFOUR HAWK	6
ALL BETS ON RED	8
ARDYNE GRAYSEE	4
ARIZONA JACKSON	1
BETTER THAN NEVER	8
BETTBEACH YANKEE	1
BETTOR BEAST	5
BETTORSTOPMENOW	6
B JS CHOICE	7
BLUE GLAMBER	2
BRIGHTSIDE MASEO	7
CABOT TOWER	3
CANTGETUOUTAMYMIND	3
CHOREOGRAPHER	9
COOL CUTE COOKIE	2
COVE BEACH	9
DUCHENNE	3
FATED FIRE	3
FEISTY LIKE FIRE	9
FIVE STAR LOU	5
HAPPY LOOKER	4
HARBORLITE AMBROSE	1
HARBORLITE JIMMIE	5
HES STILL WATCHING	6
IM A CAPTAIN	8
JKS LIFESAVER	9
KELLINA DIAMOND	3
LADIES FROM HELL	2
LARJON LOOKER	7
LASER	6
MAPLE	2
MILITARY SECRET	9
MINOTAUR	7
MS QUICK SAND	3
NORA D	3
NOT A BAD GUY	5
PARSONS	9
PJ DENA	2
PORT ST CHARLES	8
PRINT MEDIA	9
RAW POWER	7
REDLAND WRANGLER	7
RENEGADE BEACH	6
SEAS THE DAY	5
SHEILAS BRUSH	4
SHREDDAR	1
SMOKIN HOT DUDE	6
SPORTY BEE	8
SPORTY BOB	1
SWEET GADGETS	4
THE TURNING POINT	4
TOUCHANDGO HANOVER	5
TREASURES WATCHING	4
VINCENDI BLUE CHIP	8
WATCH HER DEWITT	2
WATCH YOUR MOUTH	8
WHATS YOUR LIMITS	5
WICKED ENDING	5
WILD DOC HOLLIDAY	1

### TRAINER

BARRINGTON, SHAYNE A	2,4
BEATON, ANTHONY B	3
BISSETT, PATRICK D	7
BLAIS, LUC	8
BOSSENCE, KYLE J	1,5
CHARLTON, STEPHEN	7
DARLING, JOHN B	5
DUPONT, MARIE HELENE	3
DUPUIS, MATTHEW D	3
FELLOWS, ROBERT KYLE	1
FORGIE, PAM M	3
GILES, COREY M	2
GILLARD, STEPHEN M	5
GODDARD, MARK A	7
GOIS, ONDREJ	4
HASKELL, KRISTOPHER D	8
HILL, CHRIS A	9
HOLMES, DARRYL W	4
HORNER, MICHAEL A	8
HUDON, STEVEN	6
LENDVOY, ASHLEY	1,8,9
LESTER, BRETT M	9
MACARTHUR, LYLE G	6
MACINNIS, VICTORIA	1
MAHON, GARY	3
MARFISI, DUANE F	2
MCENENY, SCOTT	5
MENNAIR, R GREGG	6
MERNER, GARRY M	3
MOISEYEV, JACK G	8
OLIVER, KENNETH D	3,4
PANOS, MATTHEW	6
POULTON, HARRY J	8
ROBSON, COURTNEY	9
SCHNEIDER, CASSIDY	5,6
SHERMAN, MICHELLE L	7,9
SQUIRES, R JOSEPH	9
STEACY, SHAWN F	5,7
STEEVES, ALLAN R	9
SUMNER, MICHAEL T	2
TOSCANI, LAURA	4
WALKER, JULIE A	6,7
WAXMAN, ISAAC S	2,9
WAXMAN, TESS	1
WELLWOOD, JAMES D	5
WEST, SCOTT T	9
WINACOTT, MARK W	4

### DRIVER

COULTER, SCOTT	1,2,3,4,5,6,7,8
DRURY, JONATHAN L	1
ENBERG, T MARIELLE	9
GOIS, ONDREJ	4
GUGLIELMI, NELLO	9
HALKES, STEPHEN B	9
HENRY, TRAVIS J	1,2,3,4,5,6,7
HORNER, MICHAEL A	8
HOUSE, LORNE S	5
HUDON, STEVEN	4,6
KELLY, COLIN	2,3,4
MACARTHUR, LYLE G	6
MACDONALD, BRETT A	1,3,4,5,8
MACKENZIE, PAUL G	5,7,8
MOORE, TYLER	2,6,8
OUELLETTE, ANITA	9
PILON, MARC ANDRE	9
RENAUD, JEAN BERNARD	6,7
ROONEY, GARRETT L	7
RYAN, JASON D	1,2,3,5,7,8
SALIS, MICHAEL	9
SORRIE, AUSTIN	1,2,3,5,8
STEACY, SHAWN F	5
ST PIERRE, DANIEL	9
THIESSEN, DARYL	3
WALKER, JULIE S	9
WAXMAN, ISAAC S	9

## Track Speed Ratings

### SEVEN-EIGHTHS MILE TRACK

WOODBINE MOHAWK PARK	1:55.0
----------------------	--------

### FIVE-EIGHTHS MILE TRACKS

FRASER DOWNS	1:59.0
GEORGIAN DOWNS	1:57.2
GRAND RIVER RACEWAY	
KAWARTHA DOWNS	1:58.0
NORTHLANDS PARK	1:57.4
RIDEAU CARLETON RACEWAY	1:58.1
HIAWATHA HORSE PARK	1:57.1
STAMPEDE PARK	1:58.1

### HALF-MILE TRACKS

CHARLOTTETOWN DRIVING PARK	2:01.0
CLINTON RACEWAY	2:00.3
DRESDEN RACEWAY	2:00.2
EXHIBITION PARK RACEWAY	2:01.3
FLAMBORO DOWNS	1:58.0
FREDERICTON RACEWAY	2:00.4
HIPPODROME d'AYLMER	2:03.1
HANOVER RACEWAY	2:00.3
INVERNESS RACEWAY	2:02.2
LEAMINGTON RACEWAY	2:01.0
HIPPODROME de QUEBEC	2:02.2
SUMMERSIDE RACEWAY	2:01.1
NORTHSIDE DOWNS	2:04.1
HIPPODROME TROIS-RIVIERES	2:01.4
TRURO RACEWAY	2:01.0
WESTERN FAIR RACEWAY	2:00.1

## Trainer Changes

Race	Horse	Trainer Change
4	THE TURNING POINT	Richard Moreau to Shayne A Barrington
6	BETTORSTOPMENOW	Camilla Christoforou to R Gregg McNair

# **GRAND RIVER RACEWAY**

**By Ken Middleton, Jr. – Friday, Aug. 9**

## **Most Probable Winner:**

Race 2 - #5 Watch Her Dewitt

## **Longshot Special**

Race 9 - #9 Print Media

## **Race 5 Selections 1-6-5-4**

**1 FIVE STAR LOU** gets a change of scenery to work with this evening, and he gets the rail to boot. The colt should like the softer landing spot. Top call here.

**6 WHATS YOUR LIMITS** gets into an easier spot in his quest to get things back on track. Exacta factor.

**5 NOT A BAD GUY** came first over and then faded in his latest. With some trip luck he can be a contender.

## **Race 1 Selections 3-5-2-4**

**3 WILD DOC HOLLIDAY** has nabbed three wins from his last four assignments, and I'm going to rank him in the top spot once again. He's clearly the one to beat.

**5 SPORTY BOB** has hit the board in more than half of his starts this year. I'll use him on the Exacta ticket.

**2 HARBORLITE AMBROSE** has been no worse than second in his last four attempts. Logical contender.

## **Race 6 Selections 2-6-3-1**

**2 BETTORSTOPMENOW** has been a big hot mess so far this season, but maybe he'll turn things around for new trainer McNair. I'll look for improvement.

**6 SMOKIN HOT DUDE** came on strong last time en route to grabbing the show dough. Exacta factor.

**3 HES STILL WATCHING** picked up small shares in his last two attempts. He can round out the Trifecta.

## **Race 2 Selections 5-6-4-3**

**5 WATCH HER DEWITT** has racked up 12 wins this season, and I can see her bolstering that total in this spot. She has the speed and skill to handle these.

**6 BLUE GLAMBER** turned a two-hole trip into a win in her latest at Mohawk Park. She can double up.

**4 LADIES FROM HELL** hooked a quick group last time and finished up the track. She can rebound.

## **Race 7 Selections 3-2-4-5**

**3 MINOTAUR** has had a few close calls in recent weeks for trainer Steacy, who gets an ideal post to work from tonight. I'll give him the nod in this contest.

**2 BRIGHTSIDE MASEO** turned a two-hole trip into a victory in his most recent outing. He can double up.

**4 B JS CHOICE** has picked up cheques in five of his last six assignments. He's a top three threat again.

## **Race 3 Selections 4-6-3-7**

**4 CANTGETUOUTAMYMIND** got in with some softer foes last time and capitalized on the opportunity by pacing to a 1:52.4 victory. She can double up tonight.

**6 MS QUICK SAND** has hit the board in four of her last five assignments. She's an Exacta factor in here.

**3 DUCHENNE** tagged along to grab the deuce in her most recent performance. She merits respect again.

## **Race 8 Selections 5-7-2-6**

**5 ALL BETS ON RED** had a rough trip two starts ago and as a result he was up the track. He bounced back nicely in his latest outing, however. Top call.

**7 PORT ST CHARLES** made a costly break last time and now he'll try to group. He merits serious respect.

**2 VINCENDI BLUE CHIP** gets class and post relief to work with this evening for trainer Blais. Trifecta factor.

## **Race 4 Selections 5-1-4-2**

**5 THE TURNING POINT** was a sharp winner in 1:53.4 in her latest assignment, and there's no reason to believe she can't be just as effective this evening.

**1 HAPPY LOOKER** was a solid runner-up in her last outing. The rail adds to her appeal this time around.

**4 SHEILAS BRUSH** has nabbed cheques in five of her last six assignments. She can play a minor role.

## **Race 9 Selections 7-2-3-6**

**7 MILITARY SECRET** has hit the board in nearly half of his starts this season and I'm going to look for him to hit the ticket again. In fact, he's the one to beat.

**2 COVE BEACH** was a front-stepping winner in his latest assignment. He merits major respect again.

**3 FEISTY LIKE FIRE** has picked up cheques in five of her last six outings. She can crack the top three.

# Betting Basics

Some essentials to get you started with making a wager.

## 1 How to wager



Place your bet by visiting a teller, or using a self-serve terminal.

### To place a bet here are just 5 things you need to know:

- 1 Name of racetrack (choose from any track in the simulcast feeds)
- 2 Number of the race
- 3 Amount of your bet (e.g. \$2)
- 4 Type of bet (see step 2)
- 5 Horse's number (see step 4)

Once you have decided what you want to bet, head to the nearest seller's window and use the sample statement as your guide:

**Hello, (Racetrack), race 6, \$2 to WIN on Horse #4**

### How to use a self-serve terminal:

- 1 Swipe your Cash Card/Insert Cash
- 2 Enter the initial PIN #1234 (then choose a new PIN)
- 3 Press/Tap the track you would like to bet: (defaults to current race)
- 4 Tap the Horse Number: **#4**
- 5 Press/Tap the Bet Type: **WIN**
- 6 Press/Tap the Bet Amount: **\$2**
- 7 Press/Tap the Race Number: **Race #6**
- 8 Press Green **"Make BET"** button
- 9 Press/Tap the **"Finish with Receipt"** button
- 10 Be sure to check your ticket to confirm it's the bet you wanted

To get a Cash Card or for assistance ask a teller, or a staff member.

## 2 Types of bets



### Single horse bets (minimum \$2.00 bet is required)

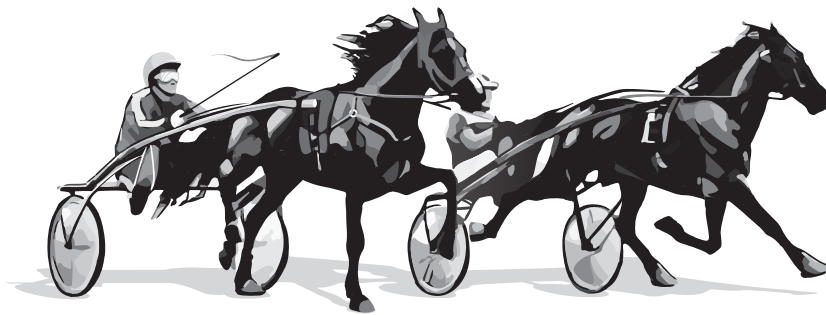
Bet type	Level of difficulty	Explanation and expectation
Win	UUU	Your horse must finish 1st; payoff determined by the win odds.
Place	UU	Your horse must finish 1st or 2nd; payoffs better than to show.
Show	U	Your horse must finish 1st, 2nd, or 3rd; modest payoffs.

### Exotic multiple-horse bets

Bet type	Level of difficulty	Explanation and expectation
Exacta*	UUUU	Your horses must finish 1st and 2nd in exact order; riskier bet that can pay a little or a lot, depending on the horses' odds.
Daily double	UUUUUU	Pick the winners of two designated consecutive races.
Pick 3, Win 4, Pick 5, Pick 6	UUUUUUUU	Select the winners of a designated set of consecutive races. The wager must be made prior to the start of the first race in the multi-race wager.
Triactor*	UUUUUUUU	Your horses must finish 1st, 2nd, and 3rd in exact order; can be expensive to play if you use a lot of horses.
Superfecta*	UUUUUUUUUU	Your horses must finish 1st, 2nd, 3rd, and 4th; big payoff possible.

\* Exotic bets require the horses to finish in the EXACT order you select, unless you "BOX" the bet, in which case your selections can finish in any order.

For more information visit [ONTARIORACING.com](http://ONTARIORACING.com)



# 3 Choosing your horse



## How to read the program

1 2 3 4 5

1	2	3	4	5
Red	12	flmD	26 ft	D-ConfedCup
Ag17 <sup>8</sup>	12	flmD	26 ft	D-ConfedCup
Ag17 <sup>8</sup>	12	flmD	26 ft	D-ConfedCup
Ag10 <sup>8</sup>	7	Moh	12 ft	D-OnSS-gf
Ag3 <sup>8</sup>	7	Moh	21 ft	3yr-Open
Jy19 <sup>8</sup>	8	M	ft	MPace
Jy12 <sup>8</sup>	8	M	ft	MPace

### SOMEBEACHSOMEWHERE

Paul MacDonell 157 A Red-White (1195-141-121-119 .207)

493000 m	:26 <sup>1</sup>	:55 <sup>2</sup>	1:22 <sup>4</sup>	1:49 <sup>2</sup>	2	1 <sup>3</sup> / <sub>4</sub>	1 <sup>3</sup> / <sub>4</sub>	1 <sup>1</sup> / <sub>4</sub>	1 <sup>2</sup> / <sub>4</sub>	1 <sup>4</sup>
50000 m	:26 <sup>2</sup>	:56	1:22 <sup>4</sup>	1:51 <sup>3</sup>	3	1 <sup>1</sup> / <sub>4</sub>	1 <sup>3</sup> / <sub>4</sub>	1 <sup>1</sup> / <sub>4</sub>	1 <sup>1</sup> / <sub>4</sub>	1 <sup>3</sup> / <sub>4</sub>
180000 m	:25 <sup>4</sup>	:54	1:21 <sup>3</sup>	1:49 <sup>2</sup>	3	4 <sup>6</sup> / <sub>4</sub>	1 <sup>3</sup> / <sub>4</sub>	1 <sup>2</sup> / <sub>4</sub>	1 <sup>2</sup> / <sub>4</sub>	1 <sup>4</sup> / <sub>4</sub>
50000 m	:26 <sup>1</sup>	:55	1:22 <sup>2</sup>	1:49	5	1 <sup>1</sup> / <sub>2</sub>	1 <sup>3</sup> / <sub>4</sub>	1 <sup>3</sup> / <sub>4</sub>	1 <sup>2</sup>	1 <sup>2</sup> / <sub>4</sub>
1100000 m	:26	:51 <sup>4</sup>	1:19 <sup>1</sup>	1:47	2	1 <sup>4</sup> / <sub>2</sub>	1 <sup>1</sup> / <sub>2</sub>	1 <sup>1</sup> / <sub>2</sub>	1 <sup>3</sup> / <sub>4</sub>	2 <sup>nk</sup>
50000 m	:27 <sup>1</sup>	:55	1:22 <sup>1</sup>	1:48 <sup>3</sup>	5	1 <sup>1</sup> / <sub>4</sub>	1 <sup>1</sup> / <sub>4</sub>	1 <sup>1</sup>	1 <sup>2</sup> / <sub>4</sub>	1 <sup>4</sup> / <sub>2</sub>

7

Tr. Brent MacGrath (9-8-1-0 .950)

Schooner Stables, Bible Hill, NS  
Breeder: Stephanie Smith, OH

1:49 <sup>2</sup>	26 <sup>1</sup>	29 <sup>1</sup>	27 <sup>2</sup>	26 <sup>3</sup>
1:51 <sup>3</sup>	26 <sup>2</sup>	29 <sup>3</sup>	28 <sup>4</sup>	26 <sup>4</sup>
1:49 <sup>2</sup>	27	27	27 <sup>3</sup>	27 <sup>4</sup>
1:49	26 <sup>1</sup>	28 <sup>4</sup>	27 <sup>2</sup>	26 <sup>3</sup>
1:47	26 <sup>2</sup>	25 <sup>2</sup>	27 <sup>2</sup>	27 <sup>4</sup>
1:48 <sup>3</sup>	27 <sup>1</sup>	27 <sup>4</sup>	27 <sup>1</sup>	26 <sup>2</sup>

8 9

2008	1:48 <sup>3</sup> MM	ft	9	8	1	0	89%	\$1,511,500
2007	1:49 <sup>3</sup> S	Moh	ft	6	6	0	100%	\$812,592
Life	1:48 <sup>3</sup> MM		3yo	14	wins			\$2,324,092
PMacDnll	BMacGrth	*15	Somebeachsmwhr	SantnnBlChp	ThMhgnPn	9		
PMacDnll	BMacGrth	*05	Somebeachsmwhr	DecSlstr	SantnnBlchp	6		
PMacDnll	BMacGrth	*05	Somebeachsmwhr	KeystonHrt	DecSlstr	8		
PMacDnll	BMacGrth	*05	Somebeachsmwhr	KeystonHrt	ThMhgnPn	6		
PMacDnll	BMacGrth	*10	ArtOffcl	Somebeahsmwhr	SharThDight	9		
PMacDnll	BMacGrth	*20	Somebeachsomwhr	ArtOffcl	BadlndsNtr	8		

All of the numbers and letters in the program might seem confusing or overwhelming at first, but focusing on these sections makes choosing a horse simple.

- 1 Horse's number in the race
- 2 Horse's post position colour
- 3 Horse's colour, sex, age, sire (father), dam (mother), sire of the dam
- 4 Morning line odds
- 5 Horse's name
- 6 Driver and Driver Record (Name, # of wins, # of 2nds, # of 3rds, winning %)
- 7 Trainer information
- 8 Horse's Lifetime record (with best win time, track size, track, age, lifetime wins and lifetime earnings)
- 9 Horse's current record (# of races, # wins, # of 2nds, # of 3rds, and money earned)

# 4 The odds



Odds are also important to consider when choosing your horse. Horses that are thought to have a better chance of winning will typically have lower odds.

### Morning line odds

Odds listed in the race program are the "morning line" odds. These are predictions of how the public will bet on the race. They are set by the track's handicapper when the race program is published, before the wagering starts.

The actual odds will be posted on the **Television** or in-field on the **Tote Board** before the race; they change up until post time, depending on how customers are betting on each horse in the race.

### Calculating a \$2 win prize

To calculate a win prize, find the Odds of a horse on the **Television** or **Tote Board** (in-field board).

Multiply the first number by 2, then divide that number by the second digit (if there is one), and then add \$2. Simple as that!

Odds	1/2	2/1	7/2	5/1	10/1
Pays	\$3.00	\$6.00	\$9.00	\$12.00	\$22.00

### Helpful facts for betting

- Some racetracks have a television simulcast commentator who tries to identify winning horses (handicaps) between the races. Listen and see if you can pick up any good tips to bet on.
- A good betting method is to choose horses with current odds two to three times higher than their morning line odds.

### 3 Tips to remember

**WIN BETS** on the FAVOURITE pay 32% of the time  
**PLACE BETS** on the FAVOURITE pay 53% of the time  
**SHOW BETS** on the FAVOURITE pay 67% of the time

\* Numbers listed above are approximate, may vary by racetrack.

Proudly supported by





# WELCOME

• On the



THE GRANDWAY

Patio

VIPs

*Wishing these groups a great evening on the patio tonight!*

**Race 5: Dan Allen Financial Race**

**Race 6: Crosby Auto's Thoroughbreds**

---

**Book your**  **THE GRANDWAY** *Patio Party*

**Get a VIP experience right next to the track!**

12+ people | starting at \$35/per person

(Patio Parties incl. reserved area, dinner, race program, access to bar, and more!)

Contact: [bookings@thegrandway.com](mailto:bookings@thegrandway.com)

1

PACE

\$.20 TRIFECTA & EXACTA & \$.20 SUPERFECTA & PICK 5- \$5000 GUARANTEED(1-2-3-4-5) & DAILY DOUBLE (Races 1 and 2)

1 MILE

PURSE \$8800. HORSES & GELDINGS - N/W 3 RACES OR \$50,000 LIFETIME (W-ALL) AE: NW \$30,000 LIFETIME (W-ALL) TO DRAW FOR INSIDE PP.

WARM-UP PAD

PROBABLE FAVOURITES: 5-3-2-1

ASK FOR HORSE BY PROGRAM NUMBER

Table with columns: Date, Track, CCndVar, Class, Purses, Race times, Str., Fin., Odds, Trn, First, Second, Third. Rows include horses like ARIZONA JACKSON, HARBORLITE AMBROSE, WILD DOC HOLLIDAY, SHREDDAR, SPORTRY BOB L, and BETTHEBEACH YANKEE.

WARM-UP PAD

PROBABLE FAVOURITES: 5-6-1-4

ASK FOR HORSE BY PROGRAM NUMBER

Table with columns: Date, Track, Cnd, Var, Class, Purse, 1/4, 1/2, 3/4, Fin, Fld, PP, 1/4, 1/2, 3/4, Str., Fin., 1/4, L1/2, L3/4, L1/4, Time, Odds, Drv, Trn, First, Second, Third. Rows include program numbers 1, 2, 3, 4, 5, 6 and horse details like PJ DENAL, COOL CUTE COOKIE, MAPLE L, LADIES FROM HELL, WATCH HER DEWITT, BLUE GLAMBER.



ASK FOR HORSE BY PROGRAM NUMBER

Table with columns for Date, Track, Cnd, Var, Class, Purity, and race results for various horses including Cabot Tower, Kellina Diamond, Duchenne, Cantgetuoutamylind, Nora D, Ms Quick Sand, Fated Fire, and others. Includes program numbers, odds, and final positions.

ASK FOR HORSE BY PROGRAM NUMBER

Table with columns: Date, Track, Cnd, Var, Class, Purse, 1/4, 1/2, 3/4, Fin, Fld, PP, 1/4, 1/2, 3/4, Str., Fin., 1/4, L1/2, L3/4, L1/4, Time, Odds, Drv, Trn, First, Second, Third. Rows include horses like HAPPY LOOKER, SWEET GADGETS L, ARDYNE GRAYSEE, SHEILAS BRUSH, THE TURNING POINT, and TREASURES WATCHING L.

THE TURNING POINT Trainer Change: Richard Moreau to Shayne A Barrington

5

PACE  
1 MILE

\$0.20 TRIFECTA & EXACTA & SUPER HI-5 - \$7500 GUARANTEED  
PURSE \$6000. 2 YEAR OLD COLTS & GELDINGS: NW 1 RACE LIFETIME.

WARM-UP PAD

PROBABLE FAVOURITES: 6-5-1-7

ASK FOR HORSE BY PROGRAM NUMBER

Table with columns: Date, Track, Cnd, Var, Class, Purse, 1/4, 1/2, 3/4, Fin, Fld, PP, 1/4, 1/2, 3/4, Str., Fin., 1/4, L1/2, L3/4, L1/4, Time, Odds, Drv, Trn, First, Second, Third. Rows include horses like FIVE STAR LOU, TOUCHANDGO HANOVER, HARBORLITE JIMMIE, WICKED ENDING, NOT A BAD GUY, WHATS YOUR LIMITS, SEAS THE DAY, and BETTOR BEAST.

# Giant Pink

## Patio Party

AUG 30 | 6:00 PM

Fundraiser for those affected by breast cancer.  
Portion of proceeds will be donated to Harness the Hope.

**BUY TICKETS: [grandriverraceway.com/events](http://grandriverraceway.com/events)**



# AUGUST 17

Doors open at 6:30 pm

Two great comedians.

\$30 +tax



Get tickets by  
scanning QR code:

**Come for drinks and dinner!**

Menu and bar will be available for purchase.

**[thegrandway.com](http://thegrandway.com)**

WARM-UP PAD

PROBABLE FAVOURITES: 2-1-3-6

ASK FOR HORSE BY PROGRAM NUMBER

Table with columns: Date, Track, Cnd, Var, Class, Purse, 1/4, 1/2, 3/4, Fin, Fld, PP, 1/4, 1/2, 3/4, Str., Fin., 1/4, L1/2, L3/4, L1/4, Time, Odds, Drv, Trn, First, Second, Third. Rows include horses like ACEFORTYFOUR HAWK, BETTORSTOPMENOW, HES STILL WATCHING, RENEGADE BEACH, LASER, and SMOKIN HOT DUDE.

BETTORSTOPMENOW Trainer Change: Camilla Christoforou to R Gregg McNair

# 7

**PACE**  
1 MILE

**\$0.20 TRIFECTA & EXACTA & \$0.20 SUPERFACTA & LATE PICK 3(7-8-9)**  
**PURSE \$6600. HORSES & GELDINGS - N/W 1 RACE OR \$8,000 LIFETIME (W-ALL)**

WARM-UP PAD

**PROBABLE FAVOURITES: 2-4-3-5**

**ASK FOR HORSE BY PROGRAM NUMBER**

Date	Track	Cnd	Var	Class	Purse	1/4	1/2	3/4	Fin	Fld	PP	1/4	1/2	3/4	Str.	Fin.	1/4	L1/2	L3/4	L4	Time	Odds	Drv	Trn	First	Second	Third
------	-------	-----	-----	-------	-------	-----	-----	-----	-----	-----	----	-----	-----	-----	------	------	-----	------	------	----	------	------	-----	-----	-------	--------	-------

<b>1</b>	<b>6-1 RAW POWER</b> (3, %s, 1:57 <sup>3</sup> , 1 \$9,657)				Garrett Rooney 150 Red-White-Black (892-201-146-143-369)											Tr: Michelle Sherman (99-10-16-22-264) ft 1:57 <sup>3</sup> Sar <sup>5</sup> %											2024	12	1	3	1	\$9,657
	BREEDER: Karen Carroll,Shedden,ON																															
	BREEDER: Sean Downey,Strathroy,ON																															
	BREEDER: Karen Carroll,Shedden,ON																															
	BREEDER: Karen Carroll,Shedden,ON																															
	BREEDER: Karen Carroll,Shedden,ON																															
	BREEDER: Karen Carroll,Shedden,ON																															

<b>2</b>	<b>8-5 BRIGHTSIDE MASEO</b> (3, %s, 1:54, 3 \$10,197)				Jean Bernard Renaud Green-Black-White (101-14-12-8-231)											Tr: Julie Walker (155-29-24-15-305) ft 1:54 Grvr <sup>5</sup> %											2024	4	1	0	1	\$4,572
	BREEDER: Darlene Carr,Dundas,ON																															
	BREEDER: W Terry Fried,Bright,ON																															
	BREEDER: W Terry Fried,Bright,ON																															
	BREEDER: W Terry Fried,Bright,ON																															
	BREEDER: W Terry Fried,Bright,ON																															
	BREEDER: W Terry Fried,Bright,ON																															

<b>3</b>	<b>3-1 MINOTAUR L</b> ( \$10,056)				Travis Henry 170 Light Blue-White (1313-224-222-196-314)											Tr: Shawn Steacy (231-25-31-26-220) ft 1:58 Fldm											2024	11	4	1	1	\$10,056
	BREEDER: Steve & Taylor Stewart,Paris,KY-Black Creek Farm,Grabill,IN																															
	BREEDER: Steve & Taylor Stewart,Paris,KY-Black Creek Farm,Grabill,IN																															
	BREEDER: Steve & Taylor Stewart,Paris,KY-Black Creek Farm,Grabill,IN																															
	BREEDER: Steve & Taylor Stewart,Paris,KY-Black Creek Farm,Grabill,IN																															
	BREEDER: Steve & Taylor Stewart,Paris,KY-Black Creek Farm,Grabill,IN																															
	BREEDER: Steve & Taylor Stewart,Paris,KY-Black Creek Farm,Grabill,IN																															

<b>4</b>	<b>2-1 B JS CHOICE</b> (3, %s, 1:56, 1 \$7,198)				Jason Ryan 170 Green-White (1016-141-162-139-272)											Tr: Mark Goddard (238-10-22-41-150) gd 1:56 Grvr <sup>5</sup> %											2024	9	1	1	1	\$7,198
	BREEDER: William Brown,Rick Rier,Hanover,ON																															
	BREEDER: William Brown,Rick Rier,Hanover,ON																															
	BREEDER: William Brown,Rick Rier,Hanover,ON																															
	BREEDER: William Brown,Rick Rier,Hanover,ON																															
	BREEDER: William Brown,Rick Rier,Hanover,ON																															
	BREEDER: William Brown,Rick Rier,Hanover,ON																															

<b>5</b>	<b>4-1 LARJON LOOKER</b> (3, %s, 1:57, 2 \$8,058)				Scott Coulter 163 Tan-Black-White (569-87-74-84-274)											Tr: Patrick Bissett (210-30-24-37-265) ft 1:57 Grvr <sup>5</sup> %											2024	5	2	1	0	\$7,758
	BREEDER: Larry Lane,Goderich,ON																															
	BREEDER: Larry Lane,Goderich,ON																															
	BREEDER: Larry Lane,Goderich,ON																															
	BREEDER: Larry Lane,Goderich,ON																															
	BREEDER: Larry Lane,Goderich,ON																															
	BREEDER: Larry Lane,Goderich,ON																															

<b>6</b>	<b>10-1 REDLAND WRANGLER</b> ( \$35,804)				Paul MacKenzie 160 Red-Black-White (551-42-75-66-191)											Tr: Stephen Charlton (64-3-11-9-189)											2024	24	0	8	3	\$18,102
	BREEDER: Stephen Charlton,Dundas,ON-Kathleen Charlton,Cornwall,PE																															
	BREEDER: Schooner II Stable,Turro,NS																															
	BREEDER: Schooner II Stable,Turro,NS																															
	BREEDER: Schooner II Stable,Turro,NS																															
	BREEDER: Schooner II Stable,Turro,NS																															
	BREEDER: Schooner II Stable,Turro,NS																															





PACE  
1 MILE

\$0.20 TRIFECTA & EXACTA & \$0.20 SUPERFECTA & LATE DOUBLE (Races 8 and 9)  
PURSE \$7500. HORSES & GELDINGS - N/W OF 2 RACES \$15,000 LIFETIME (W-ALL)

WARM-UP PAD

PROBABLE FAVOURITES: 2-1-3-5

ASK FOR HORSE BY PROGRAM NUMBER

Table with columns: Date, Track, Cnd, Var, Class, Purse, 1/4, 1/2, 3/4, Fin, Fld, PP, 1/4, 1/2, 3/4, Str., Fin., 1/4, L1/2, L3/4, L1/4, Time, Odds, Drv, Trn, First, Second, Third. Rows are numbered 1-7, each representing a race with multiple entries.

WARM-UP PAD

PROBABLE FAVOURITES: 4-3-5-7

ASK FOR HORSE BY PROGRAM NUMBER

Table with columns: Date, Track, Cnd, Var, Class, Purse, 1/4, 1/2, 3/4, Fin, Fld, PP, 1/4, 1/2, 3/4, Str., Fin., 1/4, L1/2, L3/4, L1/4, Time, Odds, Drv, Trn, First, Second, Third. Rows 1-9 contain race details for various programs including JKS LIFESAVER, COVE BEACH, FEISTY LIKE FIRE, CHOREOGRAPHER, ABOUT A BOY, PARSONS, MILITARY SECRET L, ABC, and PRINT MEDIA L.



# JOIN THE FUN!

All ages welcome!

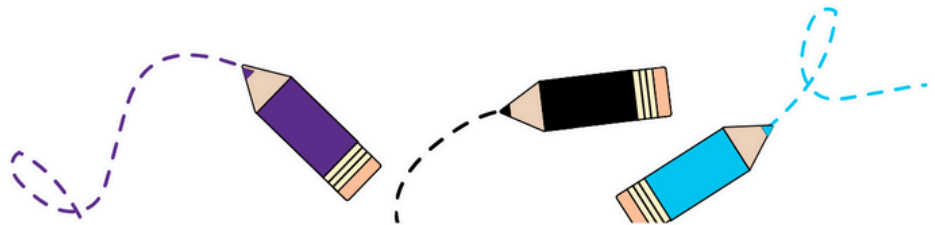


**NEIGH**bourhood

- LEARN ABOUT HORSERACING
- GET FREE STUFF
- DO FUN ACTIVITIES
- AND MORE...

See GRR Ambassador, Tom, or a mutuel teller to receive your NEIGHbourhood activity bag!

[grandriverraceway.com](http://grandriverraceway.com)



 THE GRANDWAY Lounge

**TAKEOUT AVAILABLE.**  
Seating right next to the track!

Check out the menu at  
**[thegrandway.com](http://thegrandway.com)**

# Grand River Raceway Race Night Schedule

June - September | Monday/Wednesday/Friday | Post Time: 6:30 pm



# 2024

JUNE						
S	M	T	W	T	F	S
						1
2	3	4	5	6	7	8
9	10	11	12	13	14	15
16	17	18	19	20	21	22
23	24	25	26	27	28	29
30						

JULY						
S	M	T	W	T	F	S
	1	2	3	4	5	6
7	8	9	10	11	12	13
14	15	16	17	18	19	20
21	22	23	24	25	26	27
28	29	30	31			

AUGUST						
S	M	T	W	T	F	S
				1	2	3
4	5	6	7	8	9	10
11	12	13	14	15	16	17
18	19	20	21	22	23	24
25	26	27	28	29	30	31

SEPTEMBER						
S	M	T	W	T	F	S
1	2	3	4	5	6	7
8	9	10	11	12	13	14
15	16	17	18	19	20	21
22	23	24	25	26	27	28
29	30					

\*Monday, August 5 - Industry Day; Post time: 12:30pm

7445 Wellington County Road 21, Elora, ON N0B1S0

[grandriverraceway.com](http://grandriverraceway.com) • 519-846-5455

## Grand River Drivers by Wins June 5, 2024 - Aug. 5, 2024

DRIVERS	minimum of 13 starts				MONEY	URS	WIN
	Sts	1st	2nd	3rd			
Henry Travis J	173	32	32	29	207,269	.3436	18%
Macdonald Brett A	147	25	20	21	156,365	.2933	17%
Ryan Jason D	153	24	25	26	191,991	.3043	16%
Harris J Bradley	121	15	24	23	125,647	.2975	12%
Kelly Colin	86	15	7	5	79,824	.2390	17%
Sorrie Austin	98	15	10	10	85,654	.2438	15%
Haughan Anthony P	110	14	15	17	94,706	.2545	13%
Ratchford Todd	59	14	8	4	67,809	.3352	24%
Cullen Travis A	46	12	5	4	60,628	.3502	26%
Moore Tyler	54	9	9	3	61,504	.2778	17%
Coulter Scott	115	8	16	18	81,700	.1990	7%
Young Scott R	52	8	5	5	48,525	.2393	15%
Hudon Steven	53	7	4	10	46,452	.2369	13%
Fillion Samuel	73	6	13	11	58,703	.2314	8%
McCure Bob	19	6	2	4	32,125	.4444	32%
Roy Louis-philippe	20	6	3	2	68,351	.4167	30%
Rooney Garrett L	45	5	7	7	39,413	.2494	11%
Hensley Ed F	14	3	3	0	17,465	.3333	21%
Hudon Phillippe	31	3	6	3	28,710	.2366	10%
Macdonald James A	20	3	3	2	115,920	.2667	15%
Renaud Jean Bernard	31	3	5	2	23,648	.2079	10%
Desroche Ryan P	25	2	0	2	13,481	.1067	8%
Spence Dale Pr	30	2	3	4	20,421	.1667	7%
Whelan Michael W	29	2	4	7	23,373	.2261	7%
Mackenzie Paul G	51	1	7	3	25,531	.1155	2%

## Grand River Trainers by Wins June 5, 2024 - Aug. 5, 2024

TRAINERS	minimum of 13 starts				MONEY	URS	WIN
	Sts	1st	2nd	3rd			
Dupont Marie Helene	21	10	5	2	70,575	.6402	48%
Lendvov Ashley	40	10	4	3	42,390	.3306	25%
Bossence Kyle J	30	9	2	4	40,036	.3815	30%
Cullen Jodie M	40	8	4	5	45,334	.2972	20%
Moreau Richard	29	6	4	3	33,804	.3180	21%
Toscani Laura	44	6	3	6	37,996	.2197	14%
Walker Julie A	36	6	5	2	32,698	.2623	17%
Beaton Anthony B	24	5	5	5	127,260	.3935	21%
Libby Jason A	15	5	2	1	22,919	.4296	33%
Mcnaire R Gregg	26	5	4	5	34,111	.3419	19%
Steady Shawn F	30	5	6	7	56,426	.3556	17%
Crone Meg J	19	4	2	3	21,392	.3216	21%
Boyd Rod V	14	3	2	3	17,609	.3651	21%
Dupuis Matthew D	33	3	4	5	28,712	.2088	9%
Fritz Dale W	14	3	4	1	16,924	.3968	21%
Goddard Mark A	27	3	2	6	20,695	.2263	11%
Kwietniowski Michael J	18	3	4	3	19,918	.3457	17%
Fellows Robert Kyle	25	2	9	4	33,167	.3333	8%
Hollingsworth Benjamin	21	2	4	4	21,621	.2646	10%
Horner Michael A	21	2	2	2	14,922	.1799	10%
Lester Brett M	20	2	2	6	17,408	.2556	10%
Macintosh Blake C	20	2	3	1	70,421	.2000	10%
Marfisi Duane F	13	2	3	2	17,653	.3333	15%
Ratchford Mary M	20	2	5	3	17,733	.2889	10%
Ryan Jason D	14	2	0	2	10,955	.1905	14%

## Winning Post Positions June 5, 2024 - Aug. 5, 2024

	Pace								
	1	2	3	4	5	6	7	8	9
Starts	187	187	187	187	186	174	145	86	75
Wins	40	21	20	29	37	18	11	3	8
Win%	21.4	11.2	10.7	15.5	19.9	10.3	7.6	3.5	10.7

	Trot								
	1	2	3	4	5	6	7	8	9
Starts	74	74	74	74	74	73	63	41	34
Wins	8	10	13	15	10	10	2	3	3
Win%	10.8	13.5	17.6	20.3	13.5	13.7	3.2	7.3	8.8



## Winning Favourite June 5, 2024 - Aug. 5, 2024

Races	261
Favourites or co-Favourites	265
Favourites finishing 1st	130 49.1%
Favourites finishing 2nd	50 18.9%
Favourites finishing 3rd	32 12.1%
Favourites finishing 4th - 11th	53 20.0%

## Winning Trips

June 5 to Aug. 5, 2024. Includes 261 races. Table shows the position of the winner at 1/2 and 3/4 points. Percentages not indicated for 4th through 9th as not all races had full fields.

	1	2	3	4	5	6	7	8	9
1/2	119	33	37	37	23	9	2	1	0
%	45.6	12.6	14.2						
3/4	143	53	32	18	9	3	3	0	0
%	54.8	20.3	12.3						

Pari-mutuel wagering is conducted by:  
**Woodbine Entertainment Group**

Racing is Conducted by:

## Grand River Raceway Corporation

7445 Wellington County Rd. 21

Elora, ON • N0B 1S0

Admin: (519) 846-5455

Email: info@grandriverraceway.com

Web: www.grandriverraceway.com

### Grand River Raceway Corporation

Chair	..... G. Green
Director	..... D. Whale
Director	..... B. Ross
Director	..... K. Giddy
Director	..... I. Scott
Director	..... D. Key

### Racing Officials

Associate Judge	..... Emma Pote
Associate Judge	..... Tyler Fines
Associate Judge	..... Gary Patterson
Associate Judge	..... K. Giddy
Track Veterinarian	..... P. Meyers D.V.M
Race Secretary	..... Jim Gillespie
Race Office	..... C. Pattison
Starter	..... M. Strome
Paddock Judge	..... L. Jackson
Charter	..... R. Cudmore
Announcer	..... G. Guy
Photographer	..... Tiffany Chantel Photography (519-889-1049)

### Management Team

Raceway Manager	..... J. MacDonald
Vice President - Operations	..... K. Giddy
Vice President - Finance	..... I. Scott
Facilities Manager	..... D. McCaig
Human Resources Manager	..... R. Edmondson

### A.G.C.O.

Chair	D. Forestell
Vice Chair	P. Stoyan
Member	H. Reinhart
Member	N. Desai
Member	D. McLarty
Member	C. Vaccarino

### AGCO ADMINISTRATION

CEO & Registrar	Dr. K. Schnarr
Chief Operating Officer	D. Phillips
Deputy Chief Operating Officer	J. Locke
Director Regulatory Compliance - Racing Operations	K. Cunningham
Director Regulatory Compliance - Racing Operations	J. Wannamaker
Senior Manager Racing	T. Durand
Manager Racing	D. Morretti
Senior Manager, Veterinarian Services	Dr. A. Chambers
Manager Veterinarian Services	P. Chesterfield

### First Turn Printing

The Official Program is published each racing day by First Turn Printing Office: 12 Dawson Road, Unit 3 Orangeville, Ontario, Canada. L9W 2W2. Telephone (519) 938-1523. © 2023 First Turn Printing. All rights reserved. Material printed herein may not be reproduced, retransmitted, or stored in any data retrieval system without the written permission of the copyright owners. Opinions expressed and information published herein are not to be construed as encouragement to wager. Every effort is made to ensure the accuracy of the information contained herein but First Turn Printing and the racing association cannot accept any responsibility for loss or inconvenience attributed to errors or omissions.

### Children

Children are welcome at Grand River Raceway, but must be under adult supervision at ALL times.

### Racing Policy – Grand River Raceway 'live' racing programs only:

If less than 5 races have run, guests may exchange the program for another 'live' program. The actual canceled program must be presented for exchange. No refunds.

If 5 or more races have run, there will be no exchange.

### General Operations

Supervision of the pari-mutuel betting and drug control services is provided by the Canadian Pari-Mutuel Agency (CPMA), a division of Agriculture Canada. All pools are calculated and distributed in accordance with these Regulations. All tickets should be held until the result of the race is declared official. No minor shall purchase or cash a pari-mutuel ticket. Approximate odds represent the probable pay-out price of the win pool at the time they are posted and have no bearing on the pay-out price for any other pool. Where approximate odds for any horse are posted as "1-9", the pay-out price based on a \$2 bet on the win pool may be as low as \$2.10. All tickets should be kept until the result of the race is declared official. No ruling made by the Judges or the Alcohol And Gaming Commission of Ontario (AGCO) with regard to distribution of purse money or the placing of horses in the order of finish, after the race has been declared official shall have any bearing on the pay-out prices or distribution of pari-mutuel pools. In the case of foreign separate pool betting, the rules of racing are those of the governing body that regulates the race.

### Cancellation Policy

In the event that cancellation of races should result for any reason after four races have been run, no refunds or issuance of rain checks will be made. If a cancellation results before the completion of four races, and upon producing the day's Official Program at the seller's booth, a next day's racing program will be exchanged.

### Refunds

Subject to the provisions of the Federal Regulations, all monies bet in all pools on a race are refunded in the event that the race is canceled, declared off, declared no contest or postponed beyond the racing card for which it was scheduled. Subject to the Regulations, all monies bet on a horse are refunded if the horse is a late scratch or does not receive a fair start. Where a horse that is part of an entry is a late scratch and at least one horse of that entry or mutual field starts in the race, all tickets purchased on that entry or mutual field remain valid, and the purchase price of any such ticket shall not be refunded.

### Fair Start

The starter shall have control of the horses from the formation of the post parade until a start has been determined. For purpose of this rule, the determination of the start is when the horses have passed the starting point and have been released by the starter. 22.03 (h) There shall be no recall after the horses have been released by the starter. 22.03 (i) The starter shall endeavour to get all horses away in position and on gait. The starter shall only sound a recall for the following reasons: (i) A horse scores ahead of the starting gate; (ii) There is interference before the horses have reached the starting point; (iii) A horse has broken equipment, which the starter notices; (iv) A horse falls before the starting point; (v) A horse coming to the starting gate in the wrong position; (vi) A malfunction of the starting gate or in the interests of safety. 22.03 (l) If a horse has not reached the Fair Start Pole when the horses are released at the starting point by the starter, the judges shall cause the "inquiry" sign to be displayed immediately.

### Breaking Rule

When a horse breaks from its gait in a race the driver shall: (a) take the horse to the outside of other horses where clearance exists and; (b) properly attempt to pull the horse to its gait; (c) lose ground while on the break. If there has been no violation of (a), (b) or (c) above, the horse shall not be set back unless a contending horse on its gait is lapped on the hind quarter of the breaking horse at the finish, however, notwithstanding the foregoing, if interference caused by another driver(s) or horse(s) has caused the horse to be on a break at the finish, the judges may, in their discretion determine not to set the horse back even if a contending horse on its gait is lapped on the hind quarter of the breaking horse at the finish. The judges may set any horse back one or more places if, in their judgment, any of the above violations have been committed, or if the horse goes on an extended break, and the driver may be penalized.

### Entry or Field in an Exacta

Exacta pools on races that have an entry (1 and 1A and/or 2 and 2B) or mutual field (14f, 15f...) will not offer a wager combining both halves of the same betting interest (ie. 1-1, 2-2, field-field). If the same betting interest finishes first and second, the exactor payout will be on those horses finishing first and third.

### Daily Double & Late Double Betting

Where the daily double feature is operated, the daily double is a betting transaction in which the purchaser of a ticket undertakes to select the winners of each of the two races specified for the daily double and that if the purchaser of a daily double ticket fails to pick the winner of the first half of the daily double his bet is void and that all tickets in the second half of the daily double not coupled with the declared official winner of the first half of the daily double are void no matter what circumstances might affect the programmed running of the second half of the daily double. The daily double is operated as an entirely separate pool and is not affected by wagering in other pools operated on the daily double races. Should a horse or horses (not coupled with a starter) be excused from starting in the second race of the daily double after the first race of the daily double has been declared official, holders of all daily double tickets on such horses, coupled with the winner of the daily double race, shall participate in the Consolation Double pool.

### Exacta Betting

Where the exacta feature is operated, the exacta is a betting transaction in which the purchaser of a ticket undertakes to select the first two horses to finish, in the exact order of finish, in the race on which the feature is operated.

### Trifecta Betting

A Trifecta bet is a betting transaction in which the purchaser of a ticket undertakes to select the first three horses representing different betting interests to finish, in the exact official order of finish, in the race on which the feature is operated.

### Superfecta Betting

A Superfecta bet is a betting transaction in which the purchaser of a ticket undertakes to select the first four horses representing different betting interests to finish, in the exact official order of finish, in the race on which the feature is operated.

### Super Hi-5 Betting

The Super Hi-5 wager is a betting transaction in which the purchaser of a ticket undertakes to select the first five horses representing different betting interests to finish, in the exact official order of finish, in the race on which the feature is operated. In the event no one correctly selects all five winners in order, 100 per cent of the net pool will be carried over to the next Super Hi-5 race.

### Pick-3 or Pick-4 Betting

The Pick 3 & Pick 4 bets are betting transactions in which a purchaser of a ticket undertakes to select the official winners of each of three or four successive races specified for the Pick 3 & Pick 4 respectively. Winning tickets for the Pick 3 & Pick 4 are determined in the following sequence: A) winners of all legs, B) most winners, then refund. If there is a change of surface in any leg that is NOT made known to the public prior to wagering for that pool closing, that leg will pay on all runners. If there are no winners in any leg of a pool, the entire pool is refunded.

### Pick 5 Betting

The Pick 5 bet is a betting transaction in which a purchaser of a ticket undertakes to select the official winners of each of five successive races specified for the Pick 5 respectively. If no one has correctly selected all 5 winners, the entire net pool is carried over to the next available PICK 5.

### Pick 3, Pick 4 & Pick 5 Scratches

In the event a Pick 3, Pick 4 or Pick 5 ticket designates as a selection a horse which is scratched, excused or determined by the Stewards/Judges to be a non-starter in any of the races comprising the Pick 3, Pick 4 or Pick 5 the favourite, as evidenced by the amount wagered in the win pool at the time of the start of the race in which the scratch occurred, will be substituted for the non-starting selection. In the event that the money bet in the win pool for two or more favourites is identical, the selection with the lowest program number shall be substituted for the non-starting selection. However, if a scratch occurs in any leg of the Pick 3, Pick 4 or Pick 5 pools before the pool is closed, a ticket including the scratched horse may be cancelled.

### Pari-Mutuel Deductions

The Association deducts and retains the following percentages from wagers placed on Grand River Raceway in Ontario which are then shared with the horsepeople. Horsepeople receive a further 2% on all wagers and an additional 2% on trifecta wagering. The Ontario Government retains .5% on all bets placed in Ontario. The Canadian Government retains .8% on all wagers placed in Canada.

Win, Place, Show: 13.65%, Exacta: 17.2%, Trifecta: 21.7%, Super: 23%; all other pools: 11.7%.

### Allowances

Allowances for Ontario Sired horses at Signature tracks is 50% and are based on the condition of the class. Allowances for purse earnings at Signature tracks are 25% for fillies and mares (vs colts and geldings) and are based on the conditions of the race only.

### Rule 7.15

No association shall allow a person under 18 years of age to purchase or cash a ticket. For the purposes of this rule, a "ticket" is defined as a receipt or voucher that is issued by an association for one or more bets on a race or races. The association shall ensure that signs are clearly posted in all areas, or in application forms, where tickets are purchased or cashed, advising the public of the age restriction.

### Advance Notice Of New Bet Cancellation Options

No claim shall be considered for tickets thrown away, lost, changed, destroyed or mutilated beyond recognition. Payment of wagers will only be made upon presentation of valid pari-mutuel tickets. The following Bet Cancellation Policy is in effect at Grand River Raceway and the Grand River Teletheatre site. A bet can be cancelled up until "stop betting" for the following reasons: 1) A wrong ticket (even after you have left the mutual window) e.g. wrong track; 2) A change in race surface (turf - dirt) or race distance; 3) A scratch of part of an entry (1-1A) or part of a field Self Serve Cancellation; Cancellation of Self Serve Tickets via mutual sellers (see below)

### Mutuel Teller Cancellation

1) Open cancellation: ticket must be cancelled prior to stop betting of the race.  
2) For tickets of \$100 or more you must write your name, address and telephone number on the back of the ticket before requesting the cancellation. You will also be required to present 1 piece of photo identification to the teller.

When your bets cannot be cancelled:

- 1) After a pool has been closed (ie betting has been stopped)
- 2) For tickets of \$100 or more, if photo ID is not presented or a full name, address and telephone number has not been legibly written on the back of the ticket
- 3) Under circumstances affecting the integrity of a pool or display of pari-mutuel data
- 4) An officer or the association refuses to cancel and refund the bet under subsection 57

### Children

Children are welcome at Grand River Raceway, but must be under adult supervision at ALL Times.