

FRIDAY, JUNE 14, 2024

Official Program

\$2.50 taxes Included

HARNESS RACING

FROM



POST TIME 6:30 PM

HOME OF THE BRAND NEW 5/8-MILE TRACK!

EXPECT AN EXPERIENCE.

GRANDRIVERRACEWAY.COM

Grand River Raceway Entries

HORSES

ABOUT A BOY	9
ACEFORTYFOUR HAWK	10
A DISRUPTOR	4
ALLSTAR FINEST	7
ALLSTARWATUACALLIT	10
ALL THE CHEDDAR	5
ALWAYS B SWEETEST	10
ARTSALIVE	5
AT EASE HANOVER	5
BETTOR BE EARLY	10
BIG DIAMOND	3
B JS CHOICE	10
BLUE GLAMBER	3
BOONDOGGLE	2
BRIGGS	1
BRIGUS	1
BROKEN	3
BROOKDALE GEORGE	6
BROOKDALE J MAC	6
CABOT TOWER	7
CARSONS GOUDA	8
CEREAL KILLER	9
CONTROL THE SMILE	5
COOL CUTE COOKIE	4
CRAZY WORLD	5
DIALMEUP	4
EASILY THE BEST	2
FATED FIRE	8
FEAR THE CRUSH	8
FEISTY LIKE FIRE	9
FILLY WATCHER	1
GETTING EUCHRED	8
GLADIATOR S BG	2
HAPPY LOOKER	7
HAZEE COAST	1
HEY JUDE HANOVER	2
HIGHLAND HOT SAUCE	1
HOGWASH	6
JULIUS HANOVER	6
LADIES FROM HELL	4
LAILA BLUE	8
LAND OF PARADISE	3
LA SUN CONTROL	5
LOLAS SUNSHINE	3
MACHIN A TRICK	9
MARZANNK HANOVER	3
MEILLEUR FROMAGE	3
MEL'S LEGACY	6
MINOTAUR	10
MS MACHINGBIRD	7
MUCKSAIL HANOVER	6
MY MOTHER PEARL	8
MY ONLY SUNSHINE	7
ONYX BOVINO	2
PARTY PASS	10
PAYNE FOR PRES	9
PJ DENA	4
P L QUICKSAND	5
PORT ST CHARLES	10
POUND CAKE JIM	10
PRIVATE DANCE	10
SAILORS SHADOW	2
SHADOWS SHADOW	1
SHEILAS BRUSH	7
SILVERBACK JACK	9
SOLID NINE HANOVER	1
SOME CAMEO	4
SOUTHWIND INFUSION	1
SPORTS DUCHESS	8
SPORTY BOB	5
ST LADS CRIMINAL	1
STONEBRIDGE DRAMA	7
SWEET ALEX	6
SWEET CHEESEUS	8
THE DARK PANTHER	6
THUMANN	2
VALENTINO OF LEDA	5
VOOM VOOM	3
VORACIOUS	5
WORLD REVIVAL	2

TRAINER

BELORE, BRENT D	8
BOSSENCE, KYLE J	3
BOURASSA, RENE	1
BOWEN, MICHELE	1
CECCHIN, KATHY L	1,5
COCHRANE, KATHRYN L	5,8
COCHRANE, TROY J	1
CRONE, MEG J	2,4
DANCETOVIC, GORDON G	7,10
DAWSON, CARL W	9
DEMERS, GERARD	8
DUNBAR, BRENT G	5
DUNCAN, KENNETH	6
DUPONT, MARIE HELENE	1,2
DUPUIS, MATTHEW D	2,5
EDWARDS, RICK A	5
FELLOWS, ROBERT KYLE	3,5
FORGIE, PAM M	8
GILES, COREY M	4
GODDARD, MARK A	6,10
GOOD, DOUGLAS J	8
GREGG, VICKI J	8
GUILLEMETTE, FRANCIS	9
HARDING, NATHAN L	4,7
HOFACKER, WILLIAM K	7
HOLLINGSWORTH, BENJAMIN	5,6,8
HORNER, MICHAEL A	1
HUDON, STEVEN	10
LAREAU, RICHARD	10
LENDVOY, ASHLEY	1,9
LEPAGE, LORIA	6
LESTER, BRETT M	9
LIBBY, JASON A	2
LINDSEY, DONALD	2,8
MANN, JARED A	7
MARFISI, DUANE F	3,4,5
MARTIN, HARRY L	3
MCCABE, LACEY R	2
MCNIVEN, SCOTT P	3
MOISEYEV, JACK G	10
MOORE, IAN	5
OLIVER, KENNETH D	1,7
PERREAULT, SANDRA	4
RATCHFORD, MARY M	3
ROBSON, COURTNEY	9
SCHNEIDER, CASSIDY	9
SPENCE, MACKENZIE B	10
STEACY, SHAWN F	10
SUMNER, MICHAEL T	4
THOMSON, JEFFREY J	10
TOSCANI, LAURA	10
WALKER, JULIE A	6,10
WHELAN, WALTER J	1,2,5,6
WILSON, BOYD R	2
WINACOTT, MARK W	3,7

DRIVER

BAILLARGEON, MARIO J	1
BELORE, BRENT D	8
COULTER, SCOTT	1,3,4,6,7,8,9,10
GREGG, LOUIS P	8,10
HARRIS, J BRADLEY	2,3,4,5,7,9,10
HAUGHAN, ANTHONY P	1,2,3,4,5,6,7,8,9
HENRY, TRAVIS J	1,2,3,5,6,7,8,9,10
HUDON, STEVEN	10
KELLY, COLIN	2,5,6,7
MACDONALD, BRETT A	1,2,3,4,5
MACKENZIE, PAUL G	5
RATCHFORD, TODD	3,8,10
RENAUD, JEAN BERNARD	6,10
ROONEY, GARRETT L	1,3,5
RYAN, JASON D	1,2,3,4,5,6,7,9,10
SORRIE, AUSTIN	1,2,7,8,9,10
SPENCE, DALE PR	5,6,8,10
WHELAN, MICHAEL W	1,2,4,5,6

Track Speed Ratings

SEVEN-EIGHTHS MILE TRACK

WOODBINE MOHAWK PARK	1:55.0
----------------------	--------

FIVE-EIGHTHS MILE TRACKS

FRASER DOWNS	1:59.0
GEORGIAN DOWNS	1:57.2
GRAND RIVER RACEWAY	
KAWARTHA DOWNS	1:58.0
NORTHLANDS PARK	1:57.4
RIDEAU CARLETON RACEWAY	1:58.1
HIAWATHA HORSE PARK	1:57.1
STAMPEDE PARK	1:58.1

HALF-MILE TRACKS

CHARLOTTETOWN DRIVING PARK	2:01.0
CLINTON RACEWAY	2:00.3
DRESDEN RACEWAY	2:00.2
EXHIBITION PARK RACEWAY	2:01.3
FLAMBORO DOWNS	1:58.0
FREDERICTON RACEWAY	2:00.4
HIPPODROME d'AYLMER	2:03.1
HANOVER RACEWAY	2:00.3
INVERNESS RACEWAY	2:02.2
LEAMINGTON RACEWAY	2:01.0
HIPPODROME de QUEBEC	2:02.2
SUMMERSIDE RACEWAY	2:01.1
NORTHSIDE DOWNS	2:04.1
HIPPODROME TROIS-RIVIERES	2:01.4
TRURO RACEWAY	2:01.0
WESTERN FAIR RACEWAY	2:00.1

Trainer Changes

Race	Horse	Trainer Change
2	GLADIATOR S BG	Jacques Dupont to Marie Helene Dupont
9	SILVERBACK JACK	Victor C Puddy to Carl W Dawson

Grand River Raceway

By Ken Middleton, Jr. - Friday, June 14

Most Probable Winner:

Race 1 - #9 St Lads Criminal

Longshot Special

Race 6 - #1 Mels Legacy

Race 1 Selections 9-5-7-2

9 ST LADS CRIMINAL did loads of winning last year and I can see him doing well in his return race based on how sharp his qualifier was. He gets the nod.

5 FILLY WATCHER has been first or second in each of his last four attempts. Exacta factor once again.

7 SOLID NINE HANOVER went wire-to-wire in his latest at Mohawk Park. He merits respect in this spot.

Race 6 Selections 2-5-4-8

2 BROOKDALE GEORGE came up just a neck short in his latest outing. The colt gets a good post to work from tonight and that makes him a logical win threat.

5 SWEET ALEX has hit the board in half of his starts this season for trainer Walker. Exacta factor tonight.

4 MUCKSAIL HANOVER had a good closing kick last time for Team Whelan. He's a top three threat here.

Race 2 Selections 1-7-6-5

1 ONYX BOVINO resurfaces after blowing up on a late lead last time. The gelding gets the pole position to work from as he tries to get back on track. Top call.

7 WORLD REVIVAL shoots for a Grand Slam in here for trainer Crone. He's a logical win threat again.

6 GLADIATOR S BG is perfect this season in his first three assignments. He takes on tougher foes tonight.

Race 7 Selections 2-3-1-4

2 HAPPY LOOKER gets a heaping helping of post relief to work with tonight, and that might be the edge she needs to find her way to victory lane. Top call.

3 STONEBRIDGE DRAMA rallied for a small share last time. She can play a bigger role against these.

1 SHEILAS BRUSH tagged along to grab the show dough last time. He can play a similar role tonight.

Race 3 Selections 3-5-6-8

3 BLUE GLAMBER gets a change of scenery to work with as she shoots for her fifth win of the year. She draws an excellent post in here. I'll give her the nod.

5 BROKEN has hit the board in each of her last three tries. Despite missing some time, she's worth a look.

6 VOOM VOOM was a respectable fourth in last week's return race. She can improve in this spot.

Race 8 Selections 7-1-3-6

7 FEAR THE CRUSH is one that I'll go to as I go price shopping in what appears to be a wide open race. She'll need a wake up call to do it. Slight edge here.

1 FATED FIRE turned in a gutsy effort last time and came away with a 1:54 score. She can double up.

3 SPORTS DUCHESS got off to a slow start last time and never got involved. She can improve in here.

Race 4 Selections 4-2-3-5

4 PJ DENA drops in for a discounted price tag as she gets a change of scenery to work with tonight. I'll look for her to be a speed presence in here. Top call.

2 A DISRUPTOR was a speedy third-place finisher in her latest outing. She merits respect once again.

3 DIALMEUP doesn't win very often, but quite often he gets in the hunt and grabs a share. Triacta factor.

Race 9 Selections 6-2-4-1

6 FEISTY LIKE FIRE drops in for a reduced price tag tonight for trainer Lester, who will be on the lookout for improvement with the gelding. He gets the nod.

2 ABOUT A BOY has hit the ticket in each of his last four attempts. The veteran is a logical Exacta factor.

4 CEREAL KILLER has been a steady cheque earner, but wins have been tough to come by for him.

Race 5 Selections 7-6-3-1

7 SPORTY BOB showed improvement in last week's debut on Lasix. The gelding is one of a handful of win candidates in this contest. He gets just a slight edge.

6 AT EASE HANOVER cruised to an easy win last time when given a change of scenery. Major danger.

3 CRAZY WORLD bounced back for a solid score in his latest, and I can see him doubling up in this spot.

Race 10 Selections 7-1-4-9

7 POUND CAKE JIM was a solid runner-up in his latest outing for trainer Walker, who had to be pleased with the performance. I'll give him the nod in here.

1 PORT ST CHARLES had a rough trip last time, but still managed to take home a small share. Contender.

4 MINOTAUR has picked up cheques in all five of his starts this season. He can play a minor role in here.

WELCOME

On the



THE GRANDWAY

Patio

VIPs

Tonight we are welcoming these great groups on our patio, thank you for celebrating with us tonight!

Race 5: SV LAW

Race 6: EQUITY EQUINE ESCAPE

Book your  **THE GRANDWAY** *Patio Party*

Get a VIP experience right next to the track!

12+ people | starting at \$35/per person
(Patio Parties incl. reserved area, dinner, race program, access to bar, and more!)

Contact: bookings@thegrandway.com

Betting Basics

Some essentials to get you started with making a wager.

1 How to wager



Place your bet by visiting a teller, or using a self-serve terminal.

To place a bet here are just 5 things you need to know:

- 1 Name of racetrack (choose from any track in the simulcast feeds)
- 2 Number of the race
- 3 Amount of your bet (e.g. \$2)
- 4 Type of bet (see step 2)
- 5 Horse's number (see step 4)

Once you have decided what you want to bet, head to the nearest seller's window and use the sample statement as your guide:

Hello, (Racetrack), race 6, \$2 to WIN on Horse #4

How to use a self-serve terminal:

- 1 Swipe your Cash Card/Insert Cash
- 2 Enter the initial PIN #1234 (then choose a new PIN)
- 3 Press/Tap the track you would like to bet: (defaults to current race)
- 4 Tap the Horse Number: **#4**
- 5 Press/Tap the Bet Type: **WIN**
- 6 Press/Tap the Bet Amount: **\$2**
- 7 Press/Tap the Race Number: **Race #6**
- 8 Press Green **"Make BET"** button
- 9 Press/Tap the **"Finish with Receipt"** button
- 10 Be sure to check your ticket to confirm it's the bet you wanted

To get a Cash Card or for assistance ask a teller, or a staff member.

2 Types of bets



Single horse bets (minimum \$2.00 bet is required)

Bet type	Level of difficulty	Explanation and expectation
Win	UUU	Your horse must finish 1st; payoff determined by the win odds.
Place	UU	Your horse must finish 1st or 2nd; payoffs better than to show.
Show	U	Your horse must finish 1st, 2nd, or 3rd; modest payoffs.

Exotic multiple-horse bets

Bet type	Level of difficulty	Explanation and expectation
Exacta*	UUUU	Your horses must finish 1st and 2nd in exact order; riskier bet that can pay a little or a lot, depending on the horses' odds.
Daily double	UUUUUU	Pick the winners of two designated consecutive races.
Pick 3, Win 4, Pick 5, Pick 6	UUUUUUU	Select the winners of a designated set of consecutive races. The wager must be made prior to the start of the first race in the multi-race wager.
Triactor*	UUUUUUUU	Your horses must finish 1st, 2nd, and 3rd in exact order; can be expensive to play if you use a lot of horses.
Superfecta*	UUUUUUUU	Your horses must finish 1st, 2nd, 3rd, and 4th; big payoff possible.

* Exotic bets require the horses to finish in the EXACT order you select, unless you "BOX" the bet, in which case your selections can finish in any order.

For more information visit ONTARIORACING.com

1

PACE

\$0.20 TRIFECTA & EXACTA & \$0.20 SUPERFECTA & PICK 5- \$5000 GUARANTEED(1-2-3-4-5) & DAILY DOUBLE (Races 1 and 2)

1 MILE

PURSE \$8000. HORSES & GELDINGS - N/W 2 RACES OR \$31,000 LIFETIME (W-ALL)

WARM-UP PAD

PROBABLE FAVOURITES: 5-9-2-7

ASK FOR HORSE BY PROGRAM NUMBER

Table with columns: Date, Track, Cnd, Var, Class, Purse, 1/4, 1/2, 3/4, Fin, Fld, PP, 1/4, 1/2, 3/4, Str., Fin., 1/4, L 1/2, L 3/4, L 1/4, Time, Odds, Drv, Trn, First, Second, Third. Rows 1-9 contain race details for various horses and programs.

WARM-UP PAD

PROBABLE FAVOURITES: 1-6-5-7

ASK FOR HORSE BY PROGRAM NUMBER

Table with columns: Date, Track, Cnd, Var, Class, Purse, 1/4, 1/2, 3/4, Fin, Fld, PP, 1/4, 1/2, 3/4, Str., Fin., 1/4, 1/2, 1/4, 1/4, Time, Odds, Drv, Trn, First, Second, Third. Rows include program numbers 1-8 and horse names like ONYX BOVINO, SAILORS SHADOW, BOONDOGGLE, HEY JUDE HANOVER, THUMANN, GLADIATOR S BG, WORLD REVIVAL, and EASILY THE BEST.

GLADIATOR S BG Trainer Change: Jacques Dupont to Marie Helene Dupont

3

PACE
1 MILE

\$0.20 TRIFECTA & EXACTA & \$0.20 SUPERFECTA & PICK 3(3-4-5)
PURSE \$6500. FILLIES & MARES - N/W \$3,000 LAST 3 OR \$4,500 LAST 5. AE: N/A \$720 P/S IN 2023
/24.

WARM-UP PAD

PROBABLE FAVOURITES: 3-1-5-8

ASK FOR HORSE BY PROGRAM NUMBER

Date	Track	Cnd	Var	Class	Purse	1/4	1/2	3/4	Fin	Fld	PP	1/4	1/2	3/4	Str.	Fin.	1/4	L1/2	L3/4	L1/4	Time	Odds	Drv	Trn	First	Second	Third	
1	5-2 JASON RYAN 170 Green-White (688-94-111-102-.275) Tr: Scott McNiven (142-19-21-24-.272) ft 1:57 ³ Lon 2024 20 2 2 3 \$15,124 LOLAS SUNSHINE (4, 1:56 ¹ , 10 \$101,162) Scott & Bradley McNiven, Thomas Brodhurst, Bradley Douglas, Bradly gd 1:56 ¹ Lon 2023 39 4 5 10 \$45,106 Breeder: Winbak Farm, Chesapeake City, MD Last 5 Sts - \$3,440 Last 10 Sts - \$6,268 B m 5 by Sunshine Beach-Lola Palooza-Western Hanover ONT-SEL 5,000																											
Jun7	4	Grv	16	F-nw3200l3cd	6500	:26 ¹	:55 ³	:1:23 ¹	1:54	9	2	5 ⁷	5 ⁵ / ₁₆	4 ² / ₃₂	3 ¹ / ₂	3 ¹ / ₄	:27 ³	:29 ³	:27 ³	:30	1:54 ¹	12 ⁵	RyaJ	McNS	FatedFire	StrghtDncr	LisSnsHn	
May28	3	Lon	17	F-nw1500l3cd	5600	:28 ³	:58 ³	:1:27 ¹	1:58 ³	7	6	4 ⁴ / ₂	3 ³ / ₁₆	2 ² / _h	2 ¹ / ₄	2 ¹ / ₂	:29 ²	:29 ³	:28 ¹	:31 ²	1:58 ³	5 ⁴	RyaJ	McNS	LndOfPrds	LisSnsHn	RdSkyTnght	
May22	1	Lon	25	F-nw2250l3cd	6300	:28	:57 ⁴	:1:26 ³	1:56 ⁴	7	7	7 ¹⁰ / ₁₆	6 ⁵ / ₁₆	7 ⁶ / ₁₆	7 ⁶ / ₁₆	6 ⁵ / ₁₆	:30	:28 ⁴	:29	:30 ¹	1:58	7 ⁶⁰	RyaJ	McNS	NoraD	ScTshChdr	BrydwnBtrB	
May15	11	Lon	18	F-nw200l1l3cd	6300	:28 ³	:58 ⁴	:1:27 ²	1:57	8	[8	5 ⁶	2 ¹	2 ¹	3 ¹ / ₂	3 ³ / ₂	:29 ⁴	:29 ¹	:28 ³	:30	1:57 ³	19 ⁷⁰	HauA	McNS	LdsFrmHll	ShkftYgtt	LisSnsHn	
May8	9	Lon	16	F-nw2000l3cd	6300	:28 ³	:58 ³	:1:27 ⁴	1:57 ⁴	7	4	5 ⁶	5 ⁵ / ₁₆	6 ⁴ / ₁₆	7 ⁵ / ₁₆	4 ²	:29 ⁴	:29 ⁴	:29	:29 ³	1:58 ¹	11 ⁹⁰	HauA	McNS	LdsFrmHll	MrznknHnvr	BrydwnBtrB	
May1	8	Lon	19	F-nw2000l3cd	6300	:27 ³	:58 ¹	:1:27 ¹	1:57	8	1	4 ⁴ / ₂	4 ⁴ / ₁₆	4 ³ / ₁₆	4 ³ / ₁₆	4 ³ / ₁₆	4 ²	:28 ²	:30 ⁴	:28 ⁴	:29 ²	1:57 ²	12 ²⁵	RyaJ	McNS	ThsGrIRls	PlyDhrs	ShkftYgtt
2	9-2 GARRETT ROONEY 150 Red-White-Black (688-144-102-114-.346) Tr: Harry Martin (14-0-5-2-.246) ft 1:56 ³ Clntn 2024 27 0 2 1 \$4,357 MEILLEUR FROMAGE (5, 1:56 ³ , 8 \$73,334) Harry Martin, Hanover, ON gd 1:56 ³ Clntn 2023 27 4 4 3 \$36,253 Breeder: Harry Martin, Hanover, ON Last 5 Sts - \$2,957 Last 10 Sts - \$5,082 B m 6 by Betterthancheddar-Bali Seelster-Intrepid Seelster																											
Jun7	2	Grv	16	F-nw1500l3cd	5800	:26 ¹	:55 ¹	:1:23 ⁴	1:53 ⁴	9	1	2 ¹ / ₂	2 ²	2 ²	3 ¹ / ₂	2 ³ / ₄	:26 ²	:29 ¹	:28 ³	:29 ⁴	1:55 ³	11 ⁷⁵	RyaJ	MarH	DngnsCrvs	MllrFrmg	ShlsBrsh	
Jun1	3	Hnvr	24	Qua		:30	1:01 ²	1:30 ³	1:59 ²	2	4	2 ² / ₂	2 ²	2 ⁴ / ₂	2 ⁷	2 ⁷	:30 ²	:31 ²	:29 ³	:29 ²	2:00	4 ¹⁵	RyaJ	MarH	CrnsnShlw	MllrFrmg		
May26	3	Clntn	25	Nw1500l3cd	4000	:29	:59	:1:29	1:59 ¹	8	x3	6 ¹² / ₁₆	6 ⁶	5 ⁵ / ₁₆	5 ⁴	4 ² / ₁₆	:31 ³	:28 ³	:29 ⁴	:29 ¹	1:59 ³	33 ⁰⁵	ThiD	MarH	Abc	RsrNvRtx	FullCredit	
May19	10	Clntn	27	Nw1800l3cd	4000	:28	:57 ⁴	:1:26 ³	1:56 ⁴	8	2	6 ¹⁰ / ₁₆	7 ⁸ / ₁₆	8 ¹² / ₁₆	8 ^{x17}	5 ¹² / ₁₆	:30	:29 ²	:29 ³	:30 ²	1:59 ²	5 ¹⁵	DesR	MarH	BryntSlstr	Abc	VcsAlcs	
May8	9	Lon	16	F-nw2000l3cd	6300	:28 ³	:58 ³	:1:27 ⁴	1:57 ⁴	7	6	2 ¹ / ₂	2 ¹ / ₄	3 ² / ₂	3 ²	3 ²	5 ²	:29 ⁴	:29 ⁴	:29	:30	1:58 ¹	11 ⁹⁰	HauA	McNS	LdsFrmHll	MrznknHnvr	BrydwnBtrB
May1	3	Lon	19	F-nw1500l3cd	5600	:26 ¹	:57 ³	:1:26 ⁴	1:56 ³	7	6	1 ⁹ / ₁₆	1 ²	1 ^{ns}	1 ^h	3 ² / ₄	:26 ⁴	:30 ⁴	:29 ¹	:30 ¹	1:57	7 ⁵⁵	RyaJ	MarH	SwtChss	MrznknHnvr	MllrFrmg	
3	2-1 SCOTT COULTER 163 Tan-Black-White (472-79-58-67-.282) Tr: Mark Winacott (72-6-9-.9-.171) ft 1:52 ³ Wbs7/8 2024 9 4 1 2 \$22,230 BLUE GLAMBER (3, 7/8, 1:51, 13 \$89,696) Jemaxpo Racing Stable Llc, Wellington, FL ft 1:51 Wbs7/8 2023 21 8 0 2 \$44,746 Breeder: Travis Cullen, Dundas, ON Last 5 Sts - \$10,050 Last 10 Sts - \$22,230 B m 4 by All Bets Off-Sayitall Bb-Tell All																											
Jun6	9	Wbs	7/8	F-13000clmhp	10000	:27	:56 ³	:1:25 ¹	1:52 ⁴	6	3	5 ⁶ / ₁₆	5 ⁶	4 ² / ₃₂	4 ³ / ₁₆	3 ¹ / ₄	:28 ²	:29 ²	:28 ¹	:27 ³	1:53 ³	4 ⁴⁵	CuIT	WinM	WtchHrDwt	SweetLoving	BlueGlambr	
May30	8	Wbs	7/8	F-13000clmhp	10000	:26 ¹	:56 ³	:1:25 ¹	1:53	6	4	6 ⁷ / ₁₆	6 ¹ / ₂	5 ⁵	5 ⁷	4 ² / ₁₆	:28 ¹	:29 ³	:28 ⁴	:27	1:53 ³	11 ²⁵	RoyL	LesB	WtchHrDwt	SweetLoving	Dialmeup	
May23	9	Wbs	7/8	F-15000clmhp	10000	:26 ¹	:56	:1:24	1:52 ¹	8	8	8 ¹⁴	7 ¹¹ / ₁₆	7 ⁸ / ₁₆	6 ⁴ / ₁₆	4 ² / ₁₆	:29 ³	:28 ³	:27	:27	1:52 ²	11 ²⁵	JonT	LesB	GldsRckn	WtchHrDwt	SweetLoving	
May16	10	Wbs	7/8	F-15000clmhp	10000	:27 ¹	:56 ³	:1:24 ⁴	1:53 ³	9	8	2 ¹ / ₂	2 ¹ / ₄	2 ¹ / ₄	2 ¹ / ₄	1 ⁴	:27 ²	:29 ³	:28 ¹	:27 ²	1:52 ³	11 ⁷⁵	RoyL	LesB	BlueGlambr	SweetLoving	Dialmeup	
May9	10	Wbs	7/8	F-12000clmhp	9000	:27 ¹	:57 ²	:1:25 ⁴	1:53 ⁴	9	8	5 ⁵ / ₁₆	3 ² / ₁₆	2 ¹	2 ¹	2 ¹ / ₄	2 ¹ / ₄	:27 ¹	:29 ⁴	:28	:28	1:54	11 ⁹⁰	JamJ	BarS	WtchHrDwt	BlueGlambr	Dialmeup
May2	10	Wbs	7/8	F-12000clmhp	9000	:27 ¹	:57	:1:25 ¹	1:53 ¹	10	8	1 ¹ / ₂	1 ¹ / ₂	1 ³ / ₄	1 ¹ / ₂	1 ⁴ / ₄	:27 ¹	:29 ⁴	:28 ²	:27 ⁴	1:53 ¹	11 ⁹⁰	JamJ	BarS	BlueGlambr	GrystnTrsr	HllblyJt	
4	8-1 ANTHONY HAUGHAN 185 Green-White-Gold (317-42-45-42-.255) Tr: Scott McNiven (142-19-21-24-.272) ft 1:58 ³ Lon 2024 21 1 3 2 \$12,896 LAND OF PARADISE (6, 7/8, 1:55 ¹ , 15 \$145,514) Scott & Bradley McNiven, Thomas Brodhurst, Shirley Griffin, ON ft 1:55 ¹ Sar7/8 2023 41 4 7 4 \$30,593 Breeder: Winbak Farm, Chesapeake City, MD Last 5 Sts - \$3,752 Last 10 Sts - \$6,251 B m 7 by Badlands Hanover-Blue Paradise-Artiscape LON-SEL 10,000																											
Jun7	4	Grv	16	F-nw3200l3cd	6500	:26 ¹	:55 ³	:1:23 ¹	1:54	9	3	6 ⁸ / ₁₆	6 ⁵ / ₁₆	5 ⁵ / ₁₆	5 ⁵ / ₁₆	6 ⁵ / ₁₆	:28	:28 ⁴	:28	:30 ¹	1:55	30 ⁶⁰	MaPa	McNS	FatedFire	StrghtDncr	LisSnsHn	
May28	3	Lon	17	F-nw3500l3cd	7800	:27 ¹	:57	:1:25 ⁴	1:58 ³	7	4	5 ⁸ / ₁₆	6 ⁵ / ₁₆	6 ⁵ / ₁₆	6 ⁴ / ₁₆	6 ⁴ / ₁₆	1 ^{ns}	:29 ⁴	:31 ²	:28 ²	:30 ³	1:58 ³	12 ²⁵	HauA	McNS	LndOfPrds	LisSnsHn	RdSkyTnght
May22	2	Lon	25	F-nw1500l3cd	5600	:28 ¹	:59 ⁴	:1:29	1:58	6	4	4 ⁵	4 ⁴ / ₁₆	4 ³ / ₁₆	3 ⁵	3 ¹ / ₂	:29 ⁴	:31	:28 ⁴	:29	1:58 ³	14 ⁰⁰	RyaJ	McNS	KndLkRlyty	OkJasmine	LndOfPrds	
May8	8	Lon	16	F-nw1600l3cd	5600	:27 ⁴	:57 ⁴	:1:26 ⁴	1:57 ¹	6	1	4 ⁶ / ₁₆	4 ⁸ / ₁₆	5 ⁴ / ₁₆	4 ⁴ / ₁₆	5 ² / ₁₆	:29	:30	:28 ⁴	:29 ⁴	1:57 ³	3 ⁴⁵	RyaJ	McNS	FthfIsNl	ShkftYgtt	ArtstMcW	
May1	3	Lon	19	F-nw1500l3cd	5600	:26 ¹	:57 ³	:1:26 ⁴	1:56 ²	7	2	2 ¹ / ₂	2 ²	4 ¹ / ₂	4 ³	3 ² / ₂	:27 ¹	:30 ⁴	:29	:30 ³	1:55 ¹	3 ¹⁵	CuIT	McNS	SwtChss	MrznknHnvr	MllrFrmg	
Apr24	10	Lon	8	F-nw2000l3cd	6300	:28 ²	:58	:1:27 ²	1:58 ¹	8	[8	7 ⁸ / ₁₆	8 ⁶	8 ⁸ / ₁₆	8 ⁷ / ₁₆	5 ⁵ / ₁₆	:30	:29 ¹	:29 ¹	:30 ⁴	1:59 ¹	53 ⁸⁵	ThiD	McNS	LdsFrmHll	BrydwnBtrB	Rndmrg	
5	3-1 TODD RATCHFORD Maroon-Grey (279-29-25-39-.200) Tr: Mary Ratchford (63-9-4-11-.280) ft 1:55 ¹ Flmd 2024 9 1 1 2 \$8,326 BROKEN L (3, 7/8, 1:54 ² , 10 \$108,345) Mary Ratchford, Caledonia, ON ft 1:55 ¹ Flmd 2023 32 4 3 2 \$21,154 Breeder: Pinske Stables, Plato, MN Last 5 Sts - \$6,846 Last 10 Sts - \$8,326 B m 6 by Somebeachsomewhere-Robin Cruiser-Yankee Cruiser																											
May25	4	Flmd	20	F-nw6500lcd-L	10500	:29 ²	:59 ²	:1:28	1:57	4		scratched - vet(sick)																
May18	8	Flmd	20	F-nw3500l3cd-L	7800	:27 ¹	:57	:1:25 ⁴	1:55	9	5	8 ¹⁷ / ₁₆	7 ⁹ / ₁₆	5 ⁴ / ₁₆	5 ³ / ₁₆	3 ³ / ₁₆	:30 ³	:28 ¹	:27 ⁴	:28 ⁴	1:55 ²	2 ⁶⁰	RatT	RatM	FtHCrsh	ThsGrIRls	Broken	
May11	9	Flmd	10	F-nw3965l3cd-L	7800	:28 ³	:58 ²	:1:26 ⁴	1:56 ⁴	9	4	6 ⁸	6 ⁵ / ₁₆	6 ³ / ₁₆	4 ² / ₁₆	2 ^h	:30 ¹	:29 ²	:27 ⁴	:29 ¹	1:56 ⁴	1 ⁶⁵	HeTs	RatM	MyMthrPri	Broken	ThsGrIRls	
May5	6	Flmd	19	F-nw1500l3cd-L	6600	:28 ³	:58 ²	:1:26 ⁴	1:55 ¹	7	1	1 ¹ / ₂	1 ¹ / ₂	1 ²	1 ² / ₂	1 ² / ₂	:28 ²	:30	:28 ²	:28 ²	1:55 ¹	1 ⁹⁵	RatT	RatM	Broken	CmpsrtsDV	LPTtGrS	
Apr28	1	Flmd	19	F-nw1500l3cd-L	6600	:28 ³	:58 ⁴	:1:27 ⁴	1:58	9	6	8 ¹² / ₁₆	8 ⁹	9 ¹² / ₁₆	7 ⁵ / ₁₆	5 ³ / ₁₆	:30 ⁴	:29 ⁴	:29	:29	1:55 ¹	16 ⁷⁵	RyaJ	RatM	RsrNvYtt	JaneDiamond	KlinDmnd	
Apr21	5	Flmd	6	F-nw1500l3cd-L	6600	:28	:58 ³	:1:27 ²	1:56 ³	9	4	5 ⁶ / ₁₆	6 ⁵ / ₁₆	6 ⁵ /														

INDUSTRY DAY

AUG 5 | POST TIME 12:30 PM

BUY VIP TICKETS FOR THE CAPTAIN'S QUARTERS

You'll get:

- reserved indoor seating
- front row seat to the action
- race program
- Picnic Box lunch
- ...and more!

Get tickets at grandriverraceway.com/events

WINBAK FARM'S *2024 Yearling Lineup*



Selling Ontario-Sired Yearlings at:

Lexington (9/30-10/4) • London Classic (10/17 & 10/18)
Harrisburg (11/4-11/6) • Harrisburg Mixed (11/7 & 11/8)

Ontario Pacers Sired by: Artspeak, Betterthancheddar, **Betting Line***,
Bettor's Delight, Cattlewash*, McWicked, Shadow Play, Sportswriter & Stag Party

Ontario Trotters Sired by: Archangel, Green Manalishi S, Muscle Mass,
My MVP, Resolve & Trixtion

***Introducing the 1st Ontario Crops from Betting Line & Cattlewash!**



Visit www.winbakfarm.com for Winbak Farm's 2024 Yearling Lineup!

#1 Breeder for Ontario Sire Stakes in 2023!

Joe & JoAnn Thomson, Winbak Farm Owners / Jack Burke, General Manager / Pat Woods, Canada Manager
James Ladwig, Yearling Manager / 410.885.3059 / james.ladwig@winbakfarm.com / f / X / @

ASK FOR HORSE BY PROGRAM NUMBER

Table with columns: Date, Track, Cnd, Var, Class, Purse, 1/4, 1/2, 3/4, Fin, Fld, PP, 1/4, 1/2, 3/4, Str., Fin., 1/4, L1/2, L3/4, L1/4, Time, Odds, Drv, Trn, First, Second, Third. Rows include horse details like ARTSALIVE, CRAZY WORLD, ALL THE CHEDDAR, VALENTINO OF LEDA L, AT EASE HANOVER, SPORTY BOB L, LA SUN CONTROL, CONTROL THE SMILE, and VORACIOUS.

ALSO ELIGIBLE: In the Event of a Scratch, Horse Below Moves In and Takes Post Position of Scratched Horse Unless Otherwise Announced

Three Breeds One Vision

Working Together
for a **Strong**
Horse Racing
Industry
in Ontario



delivering racing
and breeding
programs that

REWARD
PROMOTE
and
SUPPORT



Advocating for the Ontario Horse Racing Industry

ontarioracing.com





SIRES STAKES
1974-2024

YOU ARE INVITED
to attend the Ontario Sires Stakes
50th Anniversary Celebration Events
AT A TRACK NEAR YOU

50th Anniversary Celebration Dates

Flamboro Downs May 19	Woodbine Mohawk Park May 25	The Raceway at WFD May 31	Rideau Carleton Raceway June 23
Dresden Raceway July 1	Clinton Raceway July 7	Kawartha Downs July 19	Georgian Downs August 11
Hanover Raceway August 24	Grand River Raceway September 6	Hiawatha Horse Park September 7	

GRAND RIVER Raceway

RACE DATES

Date	ASG	SERIES	Leg	Date	ASG	SERIES	Leg
Monday, July 8	2CP	PROSPECT	1	Friday, August 30	2CT	PROSPECT	4A
Monday, July 8	2FP	PROSPECT	1	Wednesday, September 4	2CP	PROSPECT	4B
Friday, July 12	2FT	PROSPECT	1	Friday, September 6	2FT	GOLD LEG	4
Friday, July 12	2CT	PROSPECT	1	Friday, September 6	2CT	GOLD LEG	4
Monday, July 15	3CP	PROSPECT	3	Monday, September 9	2FP	PROSPECT	4B
Friday, July 19	2CP	PROSPECT	2	Wednesday, September 11	3FP	PROSPECT	5
Friday, August 2	2FT	PROSPECT	3A	Friday, September 13	2CT	GRASSROOTS	5
Monday, August 5	3CP	GRASSROOTS	4	Monday, September 16	2FT	GRASSROOTS	5
Wednesday, August 7	2FP	PROSPECT	3A	Wednesday, September 18	2FT	PROSPECT	5A
Monday, August 12	3FT	GOLD LEG	4	Friday, September 27	3CP	PROSPECT FINAL	
Wednesday, August 14	3CT	GOLD LEG	4	Friday, September 27	3FP	PROSPECT FINAL	
Monday, August 26	3CT	PROSPECT	4B	Friday, September 27	3CT	PROSPECT FINAL	
Friday, August 30	2FT	PROSPECT	4A	Friday, September 27	3FT	PROSPECT FINAL	

PROSPECT FINALS
\$120,000 in purses
Grand River Raceway
3YO: September 27

The Raceway at WFD
2YO: October 11

GRASSROOTS CHAMPIONSHIPS
\$600,000 in purses
Woodbine Mohawk Park
September 28

SUPER FINALS
\$2.4 Million in purses
Woodbine Mohawk Park
October 12

COMPLETE SCHEDULE



The OSS Program is administered by Ontario Racing
ontarioracing.com



grandriverraceway.com



oss.ontarioracing.com

Schedule accurate as at March 25, 2024. Please note that all dates are subject to change and it is recommended to confirm dates and post times with the track. For complete OSS information including schedules, stats, leader boards and more, please visit oss.ontarioracing.com. Complete track information may be found at ontarioracing.com

6

PACE
1 MILE

\$0.20 TRIFECTA & EXACTA & \$0.20 SUPERFACTA & LATE PICK 5(6-7-8-9-10)
PURSE \$6600. HORSES & GELDINGS - N/W 1 RACE OR \$8,000 LIFETIME (W-ALL). AE: 3YO N/A \$650 P/
S IN 2024.

WARM-UP PAD

PROBABLE FAVOURITES: 2-4-5-6

ASK FOR HORSE BY PROGRAM NUMBER

Date	Track	°CndVar	Class	Purse	1/4	1/2	3/4	Fin	Fld	PP	1/4	1/2	3/4	Str.	Fin.	1/4	L 1/2	L 3/4	L 1/4	Time	Odds	Drv	Trn	First	Second	Third																							
1	8-1	Jason Ryan 170 Green-White (688-94-111-102-275)										Tr: Mark Goddard (156-5-15-25-.138)										2024	2	0	0	1	\$792																						
MELS LEGACY (2, 7/8, 1:59 ² -Q \$1,222)																									2023	2	0	0	0	\$430																			
RED B c 3 by Big Jim-Mach Denali-Mach Three																									Breeder: William Brown,Hanover,ON										Last 5 Sts - \$1,222										Last 10 Sts - \$1,222				
Jun7	9	Grvr ^{5/8}	16ft	Nw1r8000lcd	6600	:28	:57 ³	1:26 ¹	1:55	8	2	3 ^{1/2}	4 ^{1/4}	3 ^{3/2}	3 ³	3 ^{3/4}	:28 ¹	:30 ¹	:28 ²	:29 ¹	1:56	5 ¹⁵	RyaJ	GodM	WrldRvvl	PndCkJm	MelsLegacy																						
Jun1	6	Hnvr	24ft	Nw1r7500lcd	8000	:29	:59 ³	1:29 ³	1:58 ⁴	6	2	3 ²	2 ^{1/4}	2 ^h	5 ²	6 ^{3/4}	:29 ²	:30 ²	:29 ⁴	:29 ¹	1:59 ²	15 ⁵⁵	RyaP	GodM	MoonWalker	GshsTrsr	Macwow																						
May24	5	Wbs ^{7/8}	19ft	Qua		:29 ²	:58 ¹	1:25 ⁴	1:54 ³	8	8	7 ^{103/4}	7 ¹⁵	7 ¹⁸	7 ¹⁷	6 ¹⁸	:31 ³	:29 ³	:28 ¹	:28 ⁴	1:58 ¹	nb	FilS	GodM	Cntr1ThFr	LottoMax	Cntr1thctm																						
Jul26	1	Grvr	25ft	Prospect	8600	:28 ²	:59 ¹	1:29	1:57 ⁴	6	5	4 ⁵	4 ⁵	4 ^{3/4}	x5 ^{5/2}	5 ^{93/4}	:29 ²	:30 ⁴	:29 ²	:29 ³	1:59 ¹	6 ⁸⁵	SorA	McNR	BettinAgain	LyonsZephrr	MappoOrley																						
Jul14	5	Wbs ^{7/8}	23ft	Onss-rs	23000	:28	:57 ²	1:25 ⁴	1:52 ³	10	6	9 ¹⁵	9 ¹⁵	9 ¹⁵	9 ^{23/2}	9 ^{23/2}	:31	:29 ²	:29 ¹	:28 ¹	1:58 ²	39 ¹⁰	McND	McNR	DoBetter	FntmBym	ErnwdBgrg																						
Jul7	3	Wbs ^{7/8}	22ft	2yr-qua		:30 ²	1:00	1:28 ²	1:56 ³	6	6	5 ⁷	4 ⁵	4 ⁵	4 ⁵	4 ⁵	:31 ⁴	:29 ¹	:28 ³	:28 ¹	1:57 ⁴	nb	McND	McNR	FntmBym	DAMcDreamy	MoonWalker																						
2	8-5	Dale Pr Spence 150 White-Orange-Green (221-24-24-25-.206)										Tr: Benjamin Hollingsworth (88-7-13-13-.210)										2024	8	0	1	0	\$5,730																						
BROOKDALE GEORGE (2, 2:00-Q, 1 \$6,880)																									2023	1	1	0	0	\$1,150																			
BLUE B c 3 by Always B Miki-Nuclear Light K-No Nukes HBG 20,000																									Breeder: Robert Key,Leechburg,PA										Last 5 Sts - \$3,010										Last 10 Sts - \$6,880				
Jun7	3	Grvr ^{5/8}	16ft	Nw1r8000lcd	6600	:27 ¹	:56 ¹	1:24 ³	1:54	9	1	2 ^{3/2}	2 ^{1/4}	2 ²	2 ^{13/4}	2 ^h	:27 ⁴	:28 ⁴	:28 ²	:29	1:54	2 ⁸⁵	SpaD	HoLB	MrCommodore	BrcldlGrg	VgBlChp																						
May31	3	Wbs ^{7/8}	20ft	Nw1r7500lcd	17000	:27	:56 ⁴	1:25	1:52 ²	10	5	4 ⁶	4 ^{5/4}	3 ^{24/2}	4 ^{13/4}	7 ⁴	:28 ¹	:30 ²	:28	:29 ²	1:59 ²	6 ⁵⁵	RyaP	GodM	DAWckdShn	Cntr1Cred	BSonny																						
May17	1	Wbs ^{7/8}	15gd-1	Nw1r7500lcd	17000	:26 ⁴	:56 ⁴	1:26 ¹	1:54 ¹	10	1	5 ^{63/4}	5 ^{7/4}	6 ⁶	6 ^{81/2}	9 ^{7/2}	:28 ¹	:30	:29 ¹	:28 ¹	1:55 ³	49 ⁸⁰	HudP	HoLB	CntryKmd	SldNnHnvr	Gndf1ThBy																						
May3	7	Wbs ^{7/8}	15ft	Nw1r7500lcd	17000	:27 ⁵	:57	1:25 ³	1:52 ²	9		scratched - vet(sick)												HoLB	LousWorld	OnyxBovino	DabOcolor																						
Apr25	5	Wbs ^{7/8}	6ft	Nw1r7500lcd	17000	:27 ¹	:56 ⁴	1:26 ¹	1:53 ²	9	9	9 ^{12 1/2}	9 ¹²	8 ^{8 1/4}	8 ⁶	7 ^{5 1/2}	:29 ³	:29 ³	:28 ¹	:27 ²	1:54 ⁴	85 ²⁰	HudP	HoLB	Altirtlr	McNR	DoBetter																						
Apr18	5	Wbs ^{7/8}	12ft	Nw1r7500lcd	17000	:27 ³	:57 ¹	1:26 ³	1:54 ¹	10	7	1 ^{ns}	2 ^{1/2}	3 ²	4 ²	4 ²	:27 ³	:29 ⁴	:29 ³	:27 ³	1:54 ³	24 ³⁵	JamJ	HoLB	BthbchYnk	MattsBank	DabOcolor																						
3	10-1	Travis Henry 170 Light Blue-White (950-158-154-137-.304)										Tr: Kenneth Duncan (14-1-1-2-.158)										2024	14	1	1	2	\$9,009																						
THE DARK PANTHER (3, 2:01 ⁴ , 1 \$9,729)																									2023	1	0	0	1	\$720																			
WHITE B g 3 by Betting Line-Moonlit Dance-Art Major HBG 25,000																									Breeder: David Goodrow Stable,Cambridge,ON										Last 5 Sts - \$1,572										Last 10 Sts - \$4,284				
Jun7	6	Grvr ^{5/8}	16ft	Nw1r8000lcd	6600	:27 ⁵	:57 ³	1:25 ⁴	1:56	8	7	3 ^{24/4}	4 ^{1/2}	4 ^{9 1/2}	3 ^{7/4}	3 ^{3/4}	:28 ²	:30	:28 ³	:30 ³	1:57 ³	11 ⁶⁰	HeTs	DunK	HrbrtAmrs	HyJdHnvr	ThDrkPntr																						
May30	2	Wbs ^{7/8}	16ft	Nw1r7500lcd	6600	:28 ¹	:58 ¹	1:26 ²	1:55	7	1	2 ^{33/4}	2 ³	3 ^{5/2}	3 ^{9/2}	5 ^{23/4}	:29	:29 ²	:28 ³	:30 ¹	1:57 ³	25 ⁴⁵	CouS	WheW	SweetAlex	RcktFrht	AcfrtyrZs																						
May23	4	FldM	21ft	Nw2r16250l	7800	:28	:57	1:26	1:55 ³	6	6	6 ^{9/2}	6 ^{7/2}	6 ⁸	6 ^{7/4}	6 ^{7/4}	:29 ⁴	:28 ³	:29 ¹	:29 ¹	1:57 ¹	20 ⁴⁰	ThiD	DunK	LgSlstr	Brigus	DnckEhskppr																						
May16	3	FldM	20ft	Nw2r15000l	7800	:28 ⁵	:58 ⁴	1:27 ¹	1:56 ²	7	3	6 ^{9/4}	6 ^{7/4}	6 ^{4 1/2}	6 ^{4 1/2}	6 ^{4 1/2}	:30 ²	:29 ⁴	:27 ⁴	:29 ²	1:57 ²	38 ⁰⁰	CouS	DunK	HghndHtSc	SthwndInfsn	ShdwsOfBmt																						
May11	3	FldM	20ft	Qua-h&d	6000	:29 ¹	:51 ⁴	1:31 ¹	1:59 ²	6	10	2 ^{1 1/2}	2 ^{1 1/2}	3 ^{23/4}	3 ^{1/2}	2 ^{10 1/4}	:30	:31 ¹	:30 ³	:30 ²	1:57 ²	nb	DunK	DunK	OntprNstrm	ThDrkPntr	Shdws																						
Apr18	7	FldM	12ft	Nw2r15000l	7800	:29	:59 ¹	1:28 ¹	1:57 ²	6	3	4 ^{83/4}	4 ^{7/2}	5 ^{7 1/2}	5 ⁸	5 ^{10 1/2}	:30 ⁴	:29 ⁴	:29	:29 ⁴	1:59 ²	25 ⁶⁰	ThiD	DunK	DnckEhskppr	Thumann	FmrsBch																						
4	5-2	Scott Couler 163 Tan-Black-White (472-79-58-67-.282)										Tr: Walter Whelan (151-5-23-26-.175)										2024	2	0	0	0	\$858																						
MUCKSAIL HANOVER (\$4,278)																									2023	7	0	0	1	\$3,420																			
GREEN B r c 3 by Betting Line-Musical Hanover-Rocknroll Hanover HBG 17,000																									Breeder: Hanover Shoe Farms Inc,Hanover,PA										Last 5 Sts - \$2,538										Last 10 Sts - \$4,278				
Jun7	3	Grvr ^{5/8}	16ft	Nw1r8000lcd	6600	:27 ¹	:56 ¹	1:24 ³	1:54	9	2	6 ⁸	6 ^{7/4}	5 ^{5 1/2}	5 ⁵	4 ^{3 1/4}	:28 ⁴	:28 ⁴	:28	:29	1:54 ³	14 ³⁵	WheM	WheW	MrCommodore	BrcldlGrg	VgBlChp																						
May23	6	FldM	21ft	Nw1r5000l	6600	:29	1:00	1:28 ⁴	1:57	7	5	5 ⁷	5 ^{5 1/2}	6 ^{53/4}	5 ⁷	5 ^{73/4}	:30 ²	:30 ⁴	:28 ⁴	:28 ³	1:58 ³	25 ⁴⁵	CouS	WheW	SweetAlex	RcktFrht	AcfrtyrZs																						
May18	4	FldM	22ft	Qua		:29	:58	1:27	1:56 ³	4	4	3 ¹²	3 ²³	4 ^{243/4}	4 ^{x28}	5 ^{403/4}	:31 ²	:31 ¹	:29 ²	:32 ⁴	2:04 ⁴	nb	SobM	WheW	Trb1Dncr	DillyTarym	DmndRydr																						
May4	1	FldM	20ft	Qua		:29 ¹	:59 ¹	1:29	1:58 ³	5	5	4 ^{8 1/4}	5 ⁹	5 ¹⁰	4 ¹²	4 ^{14 1/4}	:30 ⁴	:30 ¹	:30	:30 ²	2:01 ²	nb	WheM	WheW	DayDelight	Bttingnrbch	DchssOfBmt																						
Dec6	1	FldM	-2ft	2y-nw1r5000l	6000	:28 ⁵	:59 ²	1:30 ²	2:00 ¹	7	9	7 ¹⁷	6 ^{12 1/4}	6 ^{13 1/4}	6 ¹⁴	6 ^{14 1/4}	:32	:29 ⁴	:30	:28 ¹	2:00 ²	17 ⁶⁰	WheM	WheW	BgByMily	LlSbstn	LmbrghLn																						
Nov29	7	FldM	-2ft	2y-nw1r5000l	6000	:29	1:00 ²	1:31 ¹	2:01 ²	6	3	3 ^{4 1/4}	3 ^{33/4}	5 ^{4 1/2}	4 ^{33/4}	3 ^{3 1/2}	:29 ⁴	:31 ²	:30 ⁴	:29 ⁴	2:01 ⁴	3 ⁵⁵	WheM	WheW	HesComingOn	BgByMily	MckslHnvr																						
5	3-1	Jean Bernard Renaud Green-Black-White (44-8-6-2-.272)										Tr: Julie Walker (81-17-15-8-.345)										2024	6	1	1	1	\$7,550																						
SWEET ALEX (3, 1:57, 1 \$9,350)																									2023	5	0	2	\$1,800																				
BLACK B g 3 by McWicked-Sweet Ana Hanover-Dragon Again LCYS 24,000																									Breeder: Overseas Farms Ltd,Cambridge,ON										Last 5 Sts - \$7,022										Last 10 Sts - \$9,350				
Jun1	2	Hnvr	24ft	Prospect	8000	:29 ¹	:59 ⁴	1:29 ¹	1:58 ³	6	5	5 ⁵	4 ³	3 ^{3/4}	3 ^{1 1/4}	4 ^{23/4}	:30 ¹	:30 ¹	:29	:29 ⁴	1:59 ¹	6 ³⁰	RenJ	WalJ	WmyWhsprs	BettorsRush	Ljtmkr																						
May23	6	FldM	21ft	Nw1r5000l	6600	:29	1:00	1:28 ⁴	1:57	7	6	6 ^{83/4}	6 ⁸	3 ^{3 1/4}	2 ^h	1 ^{3/4}	:30 ²	:30 ⁴	:27 ⁴	:27 ³	1:57 ³	32 ⁷⁵	WheM	WheW	Brigus	SthwndInfsn	JslHnvr																						
May15	10	Lon	18ft	Prospect	8000	:28	:59 ¹	1:28 ⁴	1:58 ²	6	3	2 ^{1 1/2}	2 ²	3 ²	3 ²	4 ^{1 1/2}	:28 ¹	:31 ²	:29 ³	:29 ²	1:58 ³	1 ⁹⁰	RenJ	WalJ	BettorsRush	AcfrtyrDk	BlyklPntr																						
May9	4	FldM	14ft	Nw1r5000l	6600	:29 ¹	:58 ²	1:27 ⁴	1:56	8	3	4 ^{5 1/2}	4 ^{53/4}	x4 ^{5 1/4}	4 ⁷	3 ⁸	:30 ¹	:29 ²	:29 ¹	:28 ¹	1:57 ¹	2 ¹⁵	RenJ	WalJ	AllBtsOnRd	Minotaur	SweetAlex																						
Apr25	1	FldM	5ft	Nw1r5000l	6600	:30	1:01 ¹	1:30 ²	1:58 ³	9	3	1 ^{2 1/2}	1 ^{3 1/4}	1 ^{13/4}	1 ^{1 1/4}	2 nd	:30	:31 ¹	:29 ¹	:28 ¹	1:58 ³	9 ⁹⁵	RenJ	WalJ	LakersBank	SweetAlex	GfbrkYnk																						
Apr18	1	FldM	12ft	Nw1r5000l	6600	:29	:59	1:29 ¹	1:58 ²	8	5	5 ^{9 1/4}	5 ^{5 1/4}	2 ^{0 1}	3 ^{2 1/2}	4 ^{2 1/4}	:30 ⁴	:29 ¹	:29 ²	:29 ²	1:58																												

7

PACE
1 MILE

\$0.20 TRIFECTA & EXACTA & \$0.20 SUPERFECTA & LATE PICK 4(7-8-9-10)
PURSE \$5800. FILLIES & MARES - NW \$1,500 LAST 3 OR \$2,300 LAST 5 (W/O \$3,000 LAST 5 N/E).
(STARTERS FOR A PURSE OF \$7,500 OR MORE LAST START N/E).

WARM-UP PAD

PROBABLE FAVOURITES: 3-1-4-6

ASK FOR HORSE BY PROGRAM NUMBER

Date	Track	°CndVar	Class	Purse	1/4	1/2	3/4	Fin	Fld	PP	1/4	1/2	3/4	Str.	Fin.	1/4	L/2	L/4	L/4	Time	Odds	Drv	Trn	First	Second	Third	
1	5-2 SHEILAS BRUSH (4, 1:53, 17 \$94,924) Tr: Kenneth Oliver (54-3-9-4-.172) Milton Young,Paradise,NL ft 1:57 ¹ GeoD% 2024 9 0 0 1 \$3,114 B m 6 by Betterthancheddar-Bachata Hanover-Art Major Breeder: Milton Young,Paradise,NL Last 5 Sts - \$1,459 Last 10 Sts - \$4,614 Jun7 ² Grv ^{5/8} 16ft F-nw1500l3cd 5800 :26: :55 ¹ 1:23 ⁴ 1:53 ⁴ 9 3 3 ³ 3 ^{3/2} 3 ⁰³ 2 ^{1/2} 3 ³ :26: :29: :28 ³ :30 ⁴ :1:55 ¹ 1 ⁶⁵ MacB OIk DngnsCrvs MllrFrmg ShlsBrsh May28 ³ Lon 17ft F-nw1500l3cd 5600 :28: :58 ³ 1:27 ¹ 1:58 ³ 7 1 2 ^{1/2} 2 ^{1/2} 3 ^{1/2} 3 ^{1/4} 4 ^{1/4} :28: :30: :28 ³ :31 ² 1:58 ² 26 ⁷⁰ MacB OIk LndOfPrds LisSnsn RdSkyTnght May12 ¹⁰ FlmD 16ft F-nw1500l3cd 6600 :28: :58 1:27 1:56 ² 7 1 3 ^{3/2} 3 ^{3/2} 3 ³ 4 ⁵ 6 ⁵ :29: :29 ³ :29: :30 ¹ :1:57 ⁴ 8 ⁹⁵ HeTs OIk PlyDhrs StnbrdgDrm NMnyHny May5 ⁶ FlmD 15ft F-nw1500l3cd-L 6600 :28: :58 ² 1:26 ⁴ 1:55 ¹ 7 6 3 ³ 3 ³ 3 ^{33/4} 6 ¹³ 6 ^{153/4} :29: :30: :28 ² :31 1:58 ² 25 ⁹⁰ MacB OIk Broken CmpssrsDV LPTtGrs Apr27 ¹ FlmD 16gd-1 Qua :29: :57 ³ 1:27 ² 1:58 ² 1 6 3 ^{3/4} 3 ¹³ 4 ¹⁶ 6 ¹⁰ 6 ^{123/4} :30: :29: :30: :30 ² 2:01 nb OIk OIk MksDwWrt OlafDuLac JLLxmt Jan28 ³ FlmD 2gd-1 F-nw1500l3cd-L 6300 :28: :58 ⁴ 1:28 ³ 1:58 ¹ 7 5 6 ^{7/2} 7 ^{1/2} 6 ⁶ 5 ^{5/2} 5 ⁵ :29: :30 ² :29 ³ :29 ² :1:59 ¹ 2 ³⁵ CouS OIk HappyLookerOtlwskysthmt CldmBym Jan21 ¹ FlmD -6ft F-nw1500l3cd-L 6300 :28: :58 ³ 1:27 ³ 1:57 ² 7 2 3 ^{3/4} 3 ^{3/4} 5 ^{4/2} 4 ^{4/4} 5 ^{4/4} :28: :30 ² :29 ¹ :29 ⁴ :1:58 ¹ 2 ⁹⁵ CouS OIk RdDrHtSHt CabotTower CldmBym Jan16 ⁹ Lon -14gd-2 F-nw4000l3cd-L 8000 :29: :1:00 1:29 ¹ 1:59 ¹ 7 1 2 3 ^{3/4} 3 ³ 3 ^{3/4} 3 ⁶ 4 ^{123/4} :30: :30 ² :29 ⁴ :31 ² 2:01 ¹ 25 ⁹⁵ HeTs OIk SHtThWhsky SlsbrkJss JackieDavis																										
2	6-1 HAPPY LOOKER (4, 1:55, 17 \$142,726) Tr: Mark Winacott (72-6-9-.171) Donald Smith,Donna Parker,Hampton,ON gd 1:58 ¹ FlmD 2024 21 2 1 3 \$15,528 B m 7 by Hes Watching-Machbethslady-Mach Three Breeder: Donald Smith,Donna Parker,Hampton,ON Last 5 Sts - \$1,732 Last 10 Sts - \$4,726 Jun7 ² Grv ^{5/8} 16ft F-nw1500l3cd 5800 :26: :55 ¹ 1:23 ⁴ 1:53 ⁴ 9 8 7 ⁰⁷ 7 ^{9/4} 6 ⁸ 6 ^{9/4} 4 ^{7/4} :27: :29 ² :28 ² :30 1:55 ² 9 ³⁰ CouS WinM DngnsCrvs MllrFrmg ShlsBrsh Jun2 ⁷ GeoD ^{5/8} 17ft F-nw1500l3cd 7000 :28: :57 1:24 ¹ 1:54 8 5 6 ⁸ 6 ⁹ 6 ^{5/2} 6 ^{5/2} 5 ^{3/4} :29: :29: :26 ² :29 ² :1:54 ³ 5 ⁷⁰ MacB WinM ELCitadel ChmbStmy ADIsruptor May26 ³ FlmD 18ft F-nw1685l3cd 6600 :28: :57 ² 1:27 1:56 ¹ 6 5 6 ^{8/4} 6 ⁹ 6 ⁰⁶ 4 ^{3/2} 4 ³ :29: :29 ² :29: :28 ³ 1:56 ³ 9 ⁷⁰ CouS WinM BtrCtchGrl WfeySadSo JaneDiamond May18 ¹⁰ FlmD 20ft F-2000Clmcd 6600 :28: :58 ¹ 1:27 1:57 8 scratched - vet(sick) WinM ClCtCk Maple TrueThat May12 ³ FlmD 16ft F-nw1500l3cd 6600 :28: :58 ¹ 1:26 ³ 1:56 ² 7 7 7 ^{83/4} 7 ^{9/2} 6 ^{63/4} 6 ^{7/4} 6 ^{7/4} :30: :29 ⁴ :28 ¹ :29 ⁴ :1:57 ⁴ 3 ³⁵ CouS WinM CmpssrsDVJaneDiamond MjstVrgn May4 ² FlmD 16ft F-nw1500l3cd 7800 :28: :58 ² 1:27 1:56 7 6 6 ^{8/4} 6 ^{8/4} 5 ^{53/2} 5 ^{3/4} 5 ^{4/4} :30: :29 ² :28 ¹ :29 1:57 17 ³⁰ CouS WinM Rndmrg MyMthrPri RsnRyvt Apr27 ⁴ FlmD 18ft F-nw3500l3cd 7800 :28: :58 ³ 1:27 ¹ 1:56 ³ 8 2 3 ^{3/4} 4 ³ 5 ^{33/4} 4 ^{43/4} 5 ^{3/4} :29: :29 ⁴ :28 ⁴ :29 ¹ :1:57 ² 18 ⁰⁰ CouS WinM CozeyUp BtrCtchGrl KcknCwgrl Apr20 ² FlmD 5ft F-nw3525l3cd 7800 :29: :59 ¹ 1:27 ² 1:56 ⁴ 6 6 6 ^{73/4} 6 ^{5/2} 6 ^{63/4} 6 ⁷ 6 ^{7/2} :30: :29 ³ :28 ² :29 ² :1:58 ¹ 44 ⁸⁵ Byrs WinM ClCtCk KcknCwgrl BrynlySlstr																										
3	2-1 STONEBRIDGE DRAMA L (8, 7/8, 1:53, 32 \$189,117) Tr: Jared Mann (56-6-7-8-.224) Allison Hepburn,Fergus,Shawn Brisebois,Grimsby,ON ft 1:53 ² Wbs7/8 2024 8 0 1 0 \$2,305 B m 9 by Camluck-Stonebridge Mystic-Stonebridge Regal FCYS 15,000 Breeder: Angie Stillier,London,ON Last 5 Sts - \$2,305 Last 10 Sts - \$2,305 Jun7 ⁴ Grv ^{5/8} 16ft F-nw3200l3cd-L 6500 :26: :55 ³ 1:23 ³ 1:54 9 7 7 ^{9/2} 7 ^{06/4} 6 ⁷ 6 ^{73/4} 5 ^{4/4} :28: :28 ⁴ :28 ¹ :29 ¹ :1:54 ⁵ 35 ⁴⁵ SorA ManJ FatedFire StrigtDncr LisSnsn May25 ¹ FlmD 20ft F-nw3500l3cd-L 7800 :28: :57 ² 1:26 ² 1:55 8 3 3 ^{2/4} 3 ^{03/4} x3 ^{01/4} 7 ^{113/4} 7 ^{133/4} :28: :29 ² :28 ⁴ :32 ¹ :1:59 23 ⁷⁰ SorA ManJ SprtsDchss Btrntmchm ThsGrIRls May18 ⁸ FlmD 20ft F-nw3500l3cd-L 7800 :27: :57 1:25 ⁴ 1:55 9 [9 5 ^{93/4} 6 ^{8/4} 8 ^{7/4} 8 ^{8/2} 8 ^{8/4} :29: :29 ² :28 ³ :29 ² :1:56 ³ 36 ⁷⁵ HarJ ManJ FrThCrsh ThsGrIRls Broken May12 ¹⁰ FlmD 16ft F-nw1500l3cd-L 6600 :28: :58 1:27 1:56 ² 7 3 2 ^{1/4} 2 ^{1/4} 2 ^{1/2} 2 ^{nk} 2 ^{nk} :28: :29 ³ :28 ⁴ :29 ¹ :1:56 ³ 4 ³⁰ SorA ManJ PLYDhrs StnbrdgDrm NMnyHny May5 ³ FlmD 15ft F-nw1500l3cd-L 6600 :27: :56 1:25 ¹ 1:56 7 1 1 ^{2/2} 1 ² 1 ^{ns} 3 ^{3/4} 5 ^{4/4} :27: :29: :29 ¹ :31 ³ :1:56 ⁴ 6 ³⁵ SorA ManJ JaneDiamondRdDrHtSHt FthfIsNI Apr27 ¹ FlmD 18ft F-2000Clmcd-L 6600 :28: :57 ¹ 1:25 ³ 1:55 ² 9 8 9 ¹⁸ 9 ^{16/4} 9 ^{173/4} 9 ²⁰ 9 ²⁵ :31: :28 ³ :28 ⁴ :31 ¹ :2:00 ² 88 ⁹⁵ Fls DemG ClCtCk TrueThat Btrntmchm Apr19 ¹¹ Wbs7/8 9ft F-cond-L 12000 :27: :55 1:22 ⁴ 1:52 ³ 10 5 3 ^{4/4} 3 ^{1/4} 3 ⁸ 8 ^{9/2} 10 ^{133/4} :28: :28 ¹ :28: :30 ¹ :1:55 ¹ 33 ¹⁵ Fls DemG ZbsBrkngDwnSweetLoving MlgnPhlly Apr12 ⁵ Wbs7/8 4gd-1 F-cond-L 12000 :27: :56 ³ 1:26 1:57 9 1 5 ^{7/4} 5 ⁷ 9 ^{91/2} 9 ^{111/4} 8 ^{13/4} :29: :28 ⁴ :29 ⁴ :31 ³ :1:59 ² 38 ⁰⁰ Fls DemG BigDiamond DrkrshdflPN Ltllbrct																										
4	3-1 MY ONLY SUNSHINE (5, 1:54, 9 \$146,325) Tr: Nathan Harding (41-5-1-1-.143) Stuart & Patricia Bolender,Elora,ON ft Q1:57 ⁴ FlmD 2024 6 0 1 0 \$2,325 B m 6 by Sunshine Beach-Hat Trick Honey-Million Dollar Cam Breeder: Stuart & Patricia Bolender,Elora,ON Last 5 Sts - \$325 Last 10 Sts - \$3,315 Jun7 ² Grv ^{5/8} 16ft F-nw1500l3cd 5800 :26: :55 ¹ 1:23 ⁴ 1:53 ⁴ 9 2 1 ^{1/2} 1 ² 1 ² 1 ^{1/2} 6 ³ :26: :29: :28 ³ :31 ⁴ :1:55 ³ 1 ⁹⁵ HauA HarN DngnsCrvs MllrFrmg ShlsBrsh May28 ⁴ Lon 17ft F-nw2250l3cd-L 6500 :28: :58 ¹ 1:28 ¹ 1:58 ³ 7 1 4 ^{4/2} 4 ^{42/4} 2 ⁰¹ 3 ^{1/2} 5 ^{3/4} :29: :30: :28 ⁴ :31 1:59 ³ Fls HarN LdsFrmHll Gdnghtlrm BrydwmBtrB May18 ¹ FlmD 22ft Qua :29: :59 ² 1:29 ¹ 1:57 ⁴ 1 3 ⁵ 3 ^{3/4} 1 ⁰¹ 1h 1 ^{hd} :30: :29 ³ :29 ¹ :28 ³ :1:57 ⁴ nb Fls HarN MyOnlySnsnDMJohnwickDoubleTGrr May11 ² FlmD 10ft Qua :29: :1:00 ¹ 1:30 1:58 ⁴ 8x x8Xdis pu dnf nb DesR HarN NdTBrth SpaceCadebt TmStndSlly Feb10 ⁵ FlmD 3ft F-nw4r37590l-L 8400 :28: :1:00 1:30 1:59 ² 9 3 6 ^{81/2} 6 ^{8/4} 4 ^{21/2} 6 ^{33/4} 7 ^{43/4} :30: :31 ¹ :29 ¹ :30 2:00 ² 11 ²⁰ DesR BosK KlnDbrm FthfIsNI Tkybrthwy Jan30 ⁴ Lon 1ft-1 F-nw2001l3cd-L 6000 :28: :58 ⁴ 1:27 ² 1:57 ³ 6 1 5 ⁸ 5 ^{63/4} 6 ^{09/2} 6 ^{1/4} 6 ^{33/4} :30: :30 ¹ :28 ² :30 ² :1:59 5 ⁸⁰ KelC BosK MyMthrPri Scrtdrgn Pnnngfrtrs Jan16 ⁹ Lon -14gd-2 F-nw4000l3cd-L 8000 :29: :1:00 1:29 ⁴ 1:59 ¹ 7 5 7 ^{11/4} 7 ^{13/4} 7 ^{18/4} 7 ^{233/4} 7 ^{33/2} :31: :31: :30 ⁴ :32 ² :2:05 ⁴ 32 ⁸⁰ KelC BosK SHtThWhsky SlsbrkJss JackieDavis Jan9 ¹⁰ Lon 5gd-2 F-nw4000l3cd-L 8000 :29: :1:01 1:30 ² 2:01 ¹ 7 5 7 ⁹ 7 ^{41/4} 5 ⁴ 5 ⁴ 5 ⁴ :31: :30 ² :29 ² :30 ¹ :2:01 ¹ 13 ¹⁵ KelC BosK SackTadavisMyOnlySnsn LisSnsn																										
5	8-1 CABOT TOWER (5, 1:57, 5 \$44,425) Tr: Kenneth Oliver (54-3-9-4-.172) Milton Young,Paradise,NL ft 1:57 ³ FlmD 2024 20 1 3 0 \$10,136 B m 5 by Artspeak-Bachata Hanover-Art Major Breeder: Milton Young,Paradise,NL Last 5 Sts - \$680 Last 10 Sts - \$1,400 Jun8 ¹ GeoD ^{5/8} 15ft F-nw350l3s 7000 :28: :56 ⁴ 1:25 ² 1:55 ² 7 3 5 ^{6/2} 5 ^{6/2} 6 ⁶ 6 ^{6/4} 5 ^{4/2} :29: :28 ² :28 ³ :29 ¹ :1:56 ¹ 13 ¹⁰ KelC OIk GmmACrn Ladysmith ThsGrIRls May28 ³ Lon 17ft F-nw1500l3cd 5600 :28: :58 ³ 1:27 ¹ 1:58 ³ 7 3x 7 ^{9/4} 7 ^{1/4} x7 ^{81/2} 7 ^{24/4} 7 ^{20/4} :30: :29 ³ :28 ⁴ :33 ⁴ :2:02 ³ 5 ³⁵ HeTs OIk LndOfPrds LisSnsn RdSkyTnght May12 ³ FlmD 16ft F-nw1500l3cd 6600 :28: :58 ³ 1:26 ³ 1:56 ² 7 6 6 ^{8/4} 6 ^{63/4} 5 ⁶ 5 ⁷ 5 ^{4/4} :29: :30: :28 ¹ :30 1:57 ² 27 ⁸⁰ HeTs OIk CmpssrsDVJaneDiamond MjstVrgn May5 ³ FlmD 15ft F-nw1500l3cd 6600 :27: :56 1:25 ¹ 1:56 7 7 7 ¹² 7 ¹⁰ 7 ^{093/4} 6 ^{53/4} 6 ^{63/4} :29: :28 ³ :28 ² :31 1:57 ² 33 ⁰⁰ Fls OIk JaneDiamondRdDrHtSHt FthfIsNI Apr21 ⁵ FlmD 6ft F-nw1500l3cd 6600 :28: :58 ³ 1:27 ² 1:56 ² 9 7 6 ⁸ 8 ^{8/4} 8 ⁸ 8 ^{8/2} 8 ¹⁰ :29: :30 ³ :28 ⁴ :29 ² :1:58 ² 77 ⁴⁰ MacB OIk BlueGlambrMndngFncs RsnRyvt Apr14 ¹¹ FlmD 14ft F-nw1500l3cd 6600 :28: :58 ³ 1:26 ³ 1:56 ³ 8 6 7 ^{8/4} 5 ^{43/4} 6 ^{07/4} 8 ¹⁰ 8 ^{11/4} :30: :29 ¹ :28 ⁴ :30 ¹ :1:58 ² 32 ⁵⁵ MacB OIk BlueGlambrHappyLndr GrystnTrsr Apr7 ⁶ FlmD 8ft F-nw1500l3cd 6600 :27: :57 ³ 1:26 ² 1:56 ² 9 8 7 ⁹ 7 ^{8/4} 7 ^{7/4} 7 ⁶ 7 ⁶ :29: :29 ⁴ :28 ³ :29 ⁴ :1:57 ³ 69 ⁵⁰ HeTs OIk BtrCtchGrl GrystnTrsr FthfIsNI Mar31 ⁵ FlmD 6ft F-nw1500l3cd 6600 :29: :58 ⁴ 1:28 1:57 ¹ 9 8 9 ^{13/4} 9 ¹¹ 8 ^{101/2} 6 ⁹ 5 ^{8/2} :31: :29 ² :29: :28 ⁴ :1:58 ⁴ 28 ¹⁰ HeTs OIk HtSlstr BrynlySlstr FthfIsNI																										
6	4-1 ALLSTAR FINEST (3, 1:55, 8 \$68,203) Tr: Gordon Dancetovic (25-1-2-2-.111) Bob & Zoran Dancetovic,Paris,ON ft 1:55 ² FlmD 2024 17 0 2 2 \$10,065 B m 4 by Betterthancheddar-Fine Life-Life Sign Breeder: Kenneth Albrecht,Milverton,ON Last 5 Sts - \$2,250 Last 10 Sts - \$5,550 Jun7 ⁴ Grv ^{5/8} 16ft F-nw3200l3cd 6500 :26: :55 ³ 1:23 ³ 1:54 9 1 8 ^{11/2} 8 ^{8/2} 8 ^{101/2} 7 ¹¹ 7 ^{9/2} :28: :28 ⁴ :28 ² :30 ¹ :1:55 ³ 5 ⁵⁰ CouS DanG FatedFire StrigtDncr LisSnsn May26 ⁶ FlmD 18ft F-nw1685l3cd 6600 :28: :57 ⁴ 1:26 ⁴ 1:56 ¹ 6 5 5 ^{7/2} 5 ^{6/4} 5 ⁰⁵ 3 ^{4/2} 2 ^{33/4} :29: :29 ¹ :28 ⁴ :29 ¹ :1:57 2 ²⁰ CouS DanG PlyDhrs AllstrFnst RdDrHtSHt May18 ⁸ FlmD 20ft F-nw3500l3cd 7800 :27: :57 1:25 ⁴ 1:55 9 4 7 ^{15/2} 8x ^{103/4} 9dis 9dis 9dis :30: :29 20 ¹⁰ MaPa DanG FrThCrsh ThsGrIRls Broken Apr26 ¹¹ Wbs7/8 8ft F-cond 12000 :27: :56 ¹ 1:25 ¹ 1:53 ¹ 10 4 7 ^{121/4} 7 ^{101/2} 6 ⁷ 7 ^{6/4} 7 ³ :29: :28 ⁴ :28 ² :27 ¹ :1:53 ³ 29 ⁰⁰ CuT DanG ChlssCsh Lttbrct Duchenne Apr19 ¹¹ Wbs7/8 9ft F-cond 12000 :27: :55 1:22 ⁴ 1:52 ³ 10 3 7 ^{141/4} 7 ^{173/4} 8 ^{0131/2} 7 ^{81/2} 5 ³ :30: :28 ² :26 ⁴ :27 ⁴ :1:53 ¹ 10 ¹⁵ CuT DanG ZbsBrkngDwnSweetLoving MlgnPhlly Apr12 ⁵ Wbs7/8 4gd-1 F-cond 12000 :27: :56 ³ 1:26 1:57 9 8 8 ¹² 2 ^{1/2} 3 ^{3/4} 3 ^{4/2} 5 ^{6/4} :27: :29 ¹ :29 ⁴ :31 ³ :1:58 ¹ 21 ⁷⁰ CuT DanG BigDiamond DrkrshdflPN Ltllbrct Apr5 ⁵ Wbs7/8 4ft F-nw1500l3cd 18000 :28: :56 ³ 1:26 1:53 ² 8 6 8 ^{11/4} 8 ¹⁷ 8 ^{093/4} 7 ^{91/2} 6 ^{83/4} :30: :29 ⁴ :28: :27 ¹ :1:55 ¹ 16 ⁰⁵ CuT DanG MikkiSixx CctchMyBrth Ggtrmstchdr Mar30 ⁸ Wbs7/8 2ft F-nw4000l5cd 15000 :27: :55 ⁴ 1:25 ³ 1:54 ³ 10 7 8 ^{133/4} 9 ^{213/4} 8 ^{051/2} 8 ^{41/2} 3 ^{nk} :29: :28 ³ :28: :28 ¹ :1:54 ³ 38 ⁵⁰ CuT DanG BtrflyKss Flltnryhnds AllstrFnst																										
7	10-1 MS MACHINGBIRD (5, 1:54, 9 \$106,809) Tr: William Hofacker (3-0-1-0-.185) William Hofacker,Campbellville,ON ft 1:55 Rcr7/8 2024 0 0 0 0 \$0 B m 7 by Mach Three-Career Hanover-Western Hanover Breeder: Larry Kelson,Holland Landing,ON-Robert Walton,Chapala,MEX Last 5 Sts - \$1,500 Last 10 Sts - \$3,226 Jun4 ² Wbs7/8 20ft Qua :29: :59 ¹ 1:28 ⁴ 1:57 ¹ 20 2 2 ^{3/2} 2 ^{13/4} 2 ^{13/4} 2 ^{13/4} 2 ^{13/4} :29: :30: :29 ³ :28 ² :1:57 ³ nb YouS HofK LALwysAmrtnMsMchngrbd ShmsLdyHvc Dec3 ² FlmD 2gd-1 F-2000Clmcd 6000 :27: :57 ³ 1:26 ⁴ 1:57 ³ 8 7 8 ^{111/4} 8 ^{1/4} 8 ⁷ 7 ^{3/4} 7 ⁹ :30: :29: :29 ¹ :31 ¹ :1:59 ² 28 ⁷⁰ MacB HofK Shplysrkps SweetLoving Chakka Nov26 ⁷ FlmD 4sy-2 F-1500Clmcd 6000 :28: :58 ⁴ 1:28 ¹ 1:58 ⁴ 8 5 7 ^{91/4} 8 ^{8/4} 8 ⁷ 7 ⁵ 5 ^{4/2} :29: :30 ¹ :29 ³ :30 1:59 ³ 17 ³⁵ MacB HofK LiliGi Btrntmchm SweetLoving Nov16 ¹ FlmD 8ft F-nw1500l3cd 6000 :28: :58 1:26 ¹ 1:54 ⁴ 7 scratched - judges HofK SaubleAmberCustardLite ShmsLdyHvc Nov5 ⁴ FlmD 7ft F-1500Clmcd 6000 :27: :57 ² 1:26 ² 1:56 ³ 6 6 7 ¹⁰ 7 ^{111/2} 8 ^{081/2} 8 ^{8/4} 7 ⁹ :29: :29 ⁴ :28 ² :30 ² :1:58 ² 29 ⁰⁵ MacB HofK PchntsDLc Badditude SweetLoving Oct19 ⁸ FlmD 13ft F-nw1500l3cd 6000 :27: :57 ¹ 1:26 ² 1:56 8 5 5 ^{63/4} 5 ^{6/2} 5 ^{093/4} 5 ^{6/2} 4 ⁵ :29: :29 ¹ :29 ⁴ :28 ⁴ :1:57 10 ³⁵ RyaJ HofK SprtsDchss Gdnghtlrm BigDiamond Oct12 ³ FlmD 20ft F-nw150l13cd 6000 :27: :57 ² 1:26 1:55 ³ 9 1 3																										

MURDER AT THE DEAD HORSE SALOON

Murder Mystery Dinner Theatre

SAVE 10%
Use Promo Code: FLASH10

Presented by  THE GRANDWAY

JUNE 22 & 23



★ ★ ★

Get tickets at
thegrandway.com



Giant

Pink 

Patio Party

AUG 30 | 6:00 PM

Fundraiser for those affected by breast cancer.
Portion of proceeds will be donated to Harness the Hope.

BUY TICKETS: grandriverraceway.com/events



PACE
1 MILE

\$0.20 TRIFECTA & EXACTA & \$0.20 SUPERFACTA & LATE PICK 3(8-9-10)

PURSE \$7200. FILLIES & MARES - N/W \$5,000 LAST 3 OR NW \$8,100 LAST 5. (STARTERS FOR A PURSE

\$15,000 OR MORE LAST START N/E). AE: N/A \$1,300 P/S IN 2024

WARM-UP PAD

PROBABLE FAVOURITES: 6-1-2-5

ASK FOR HORSE BY PROGRAM NUMBER

Table with columns: Date, Track, Cnd, Var, Class, Purse, 1/4, 1/2, 3/4, Fin, Fld, PP, 1/4, 1/2, 3/4, Str., Fin., 1/4, 1/2, 1/4, 1/4, Time, Odds, Drv, Trn, First, Second, Third. Rows include race details for horses like FATED FIRE, MY MOTHER PEARL L, SPORTS DUCHESS, LAILA BLUE, SWEET CHEESEUS, CARSONS GOUDA, FEAR THE CRUSH, and GETTING EUCHRED.

WARM-UP PAD

PROBABLE FAVOURITES: 6-2-1-3

ASK FOR HORSE BY PROGRAM NUMBER

Table with columns: Date, Track, Cnd, Var, Class, Purse, 1/4, 1/2, 3/4, Fin, Fld, PP, 1/4, 1/2, 3/4, Str., Fin., 1/4, 1/2, 1 1/4, 1 1/2, Time, Odds, Drv, Trn, First, Second, Third. Rows include race details for programs 1-6, listing horses like MACHIN A TRICK L, ABOUT A BOY, PAYNE FOR PRES L, CEREAL KILLER L, SILVERBACK JACK L, and FEISTY LIKE FIRE L.

SILVERBACK JACK Trainer Change: Victor C Puddy to Carl W Dawson

10

PACE
1 MILE

\$.20 TRIFECTA & EXACTA & SUPER HI-5
PURSE \$6200. HORSES & GELDINGS - N/W \$3,000. LIFETIME (W-ALL).

PROBABLE FAVOURITES: 1-7-9-3

WARM-UP PAD

ASK FOR HORSE BY PROGRAM NUMBER

Date	Track	CCndVar	Class	Purse	1/4	1/2	3/4	Fin	Fld	PP	1/4	1/2	3/4	Str.	Fin.	1/4	L 1/2	L 3/4	L 1/4	Time	Odds	Drv	Trn	First	Second	Third	
1	2-1 PORT ST CHARLES (\$330)																										
Tr: Todd Ratchford Maroon-Grey (279-29-25-39-.200)												Tr: Jack Moiseyev (71-5-8-11-.184)															
BREEDER: Hudson Standrbrd Stb Inc,Hudson,OC												BREEDER: Hudson Standrbrd Stb Inc,Hudson,OC															
RED	B g 4 by Sportswriter-Forever Liza-Bettors Delight LSYS 18,000	Last 5 Sts - \$330																									
Jun7	3 Grv ^{5/8}	16ft	Nw1r8000lcd	6600	:27	:56	1:24	1:54	9	7i	5 ⁶ / ₁₆	5 ⁵ / ₁₆	3 ² / ₁₆	3 ² / ₁₆	5 ¹ / ₄	:28	:28	:27	:29	1:54	22 ⁴⁵	MacB	MoiJ	MrCommodoreBrkdGrg	VgBIChp		
May24	1 Wbs ^{7/8}	21ft	Nw1r7500lcd	17000	:26	:56	1:24	1:52	10	6	10 ¹⁴ / ₁₆	10 ¹⁴ / ₁₆	10 ¹¹ / ₁₆	10 ¹² / ₁₆	10 ¹⁴ / ₁₆	:29	:29	:27	:28	1:55	24 ⁵⁰	HeTr	MoiJ	BtOnSnshn	Concealed	DabOcolor	
May10	6 Wbs ^{7/8}	12ft	Nw1r7500lcd	17000	:26	:55	1:24	1:52	10	2	7 ¹² / ₁₆	x ⁷ / ₁₆	10 ²⁵ / ₁₆	10 ²⁶ / ₁₆	9p10 ²³ / ₁₆	:29	:28	:32	:26	1:56	68 ⁷⁵	RatT	MoiJ	PmrFrstStrWickedGames	Chesterman		
May2	6 FlmD	17ft	Nw1r5000l	6600	:29	:59	1:29	1:57	8	8	8 ¹¹ / ₁₆	7 ⁹ / ₁₆	6 ⁵ / ₁₆	7 ⁷ / ₁₆	7 ⁷ / ₁₆	:31	:29	:30	:29	1:59	55 ²⁵	RyaJ	MoiJ	HghlndHtSc	DcHnvr	AllBtsOnRd	
Apr25	1 FlmD	5ft	Nw1r5000l	6600	:30	1:01	1:30	1:58	9	8	9 ¹³ / ₁₆	9 ¹² / ₁₆	9 ¹³ / ₁₆	9 ¹⁵ / ₁₆	9 ¹⁸ / ₁₆	:32	:30	:29	:29	2:02	24 ⁶⁰	RyaJ	MoiJ	LakersBank	SweetAlex	GfbrkYnk	
2	6-1 PRIVATE DANCE (\$1,032)																										
Tr: Austin Sorrie 163 Blue-Yellow (488-61-41-47-.203)												Tr: Laura Toscani (101-11-15-12-.231)															
BREEDER: Robert Burgess,Rockwood,ON												BREEDER: Laura Toscani,Mount Hope,ON															
BLUE	B c 3 by Stag Party-Thistimtsforreal-Real Desire LCYS 16,000	Last 5 Sts - \$1,032																									
May30	3 FlmD	16ft	Nw1r5000l	6600	:29	:59	1:28	1:58	9	1	3 ⁴ / ₄	4 ³ / ₄	4 ⁴ / ₄	3 ³ / ₄	4 ⁴ / ₄	:30	:29	:29	:30	1:59	8 ¹⁵	HudS	TosL	NightSwing	GfbrkYnk	AcfrtyrZs	
May24	4 Lon	24ft	Nw5000lcd	6300	:29	:59	1:28	1:59	8	5	6 ¹⁴ / ₁₆	5 ¹² / ₁₆	6 ⁵ / ₁₆	6 ⁷ / ₁₆	4 ³ / ₄	:31	:29	:28	:30	2:00	21 ⁶⁵	HudS	TosL	Hogwash	OffcrChs	HwklInFght	
May18	4 FlmD	22ft	Qua		:29	:58	1:27	1:58	5	5	6 ¹⁸ / ₁₆	6 ³⁰ / ₁₆	5 ³⁰ / ₁₆	5 ³⁰ / ₁₆	4 ³⁰ / ₁₆	:32	:31	:28	:30	2:02	3 ¹	nb	HudS	TosL	TrbDncr	DillyTaryn	DmndRdyr
3	4-1 PARTY PASS (\$4,212)																										
Tr: Scott Coulter 163 Tan-Black-White (472-79-58-67-.282)												Tr: Richard Lareau (51-3-5-4-.139)															
BREEDER: Winbak Farm,Chesapeake City,MD												BREEDER: Richard Lareau,Hamilton,ON															
WHITE	B g 3 by Stag Party-Ph Diagnosis-American Ideal HBG 32,000	Last 5 Sts - \$660																									
Jun7	6 Grv ^{5/8}	16ft	Nw1r8000lcd	6600	:27	:57	1:25	1:56	8	2	2 ³ / ₄	2 ¹ / ₄	3 ⁵ / ₄	5 ⁸ / ₄	5 ¹⁸ / ₄	:28	:30	:28	:33	2:00	47 ⁰⁵	CouS	LaR	HrbtrAmbrs	HyJdHnvr	ThDrkPnthr	
May24	4 Wbs ^{7/8}	21ft	3y-nw5000lcd	16000	:27	:56	1:25	1:52	10	8	10 ¹⁷ / ₁₆	10 ¹⁵ / ₁₆	8 ¹³ / ₁₆	7 ¹⁵ / ₁₆	8 ¹⁸ / ₁₆	:31	:28	:28	:28	1:56	87 ⁰⁵	McC	LaR	WlchHrly	AlwaysBmMnn	LsbnSstr	
May16	2 FlmD	20ft	Nw1r5000l	6600	:29	:58	1:27	1:56	7	4	6 ⁸ / ₁₆	6 ⁹ / ₁₆	6 ⁸ / ₁₆	5 ⁸ / ₁₆	5 ¹¹ / ₁₆	:30	:29	:29	:29	1:58	25 ⁵⁰	LaS	LaR	MrCommodoreRcktFrgh	GfbrkYnk		
May10	1 Wbs ^{7/8}	12ft	3y-nw5000lcd	16000	:26	:56	1:25	1:54	9	7	7 ¹⁰ / ₁₆	7 ⁹ / ₁₆	8 ⁹ / ₁₆	8 ¹⁰ / ₁₆	8 ¹⁰ / ₁₆	:29	:29	:28	:29	1:56	67 ⁰⁰	McC	LaR	NtrblnLdr	AlwaysBmMnn	ThChkyBggr	
May3	6 Wbs ^{7/8}	15ft	Qua		:29	1:00	1:29	1:57	4	4	2 ¹ / ₂	2 ¹ / ₂	3 ² / ₄	3 ¹ / ₄	3 ¹ / ₄	:29	:31	:29	:27	1:57	nb	JonT	LaR	LouGrant	AcfrtyrHwk	PartyPass	
4	10-1 MINOTAUR L (\$4,026)																										
Tr: J Bradley Harris 155 White-Green-Black (538-74-66-49-.236)												Tr: Shawn Steacy (122-9-17-12-.183)															
BREEDER: Steve & Taylor Stewart,Paris,KY-Black Creek Farm,Grabill,IN												BREEDER: Robert Burgess,Rockwood,ON															
GREEN	B c 3 by Bettors Delight-Mythical-Artsplace LEX-SEL 105,000	Last 5 Sts - \$4,026																									
May23	1 FlmD	21ft	Nw1r5000l-L	6600	:29	:59	1:27	1:57	7	7	3 ³ / ₄	4 ³ / ₄	4 ⁶ / ₄	4 ⁸ / ₄	5 ⁴ / ₄	:29	:30	:28	:31	1:59	14 ⁸⁵	DesR	SteS	McPleasant	GfbrkYnk	TwnBcmchTm	
May16	2 FlmD	20ft	Nw1r5000l-L	6600	:29	:58	1:27	1:56	7	5	3 ³ / ₄	3 ⁴ / ₄	4 ⁵ / ₄	4 ⁷ / ₄	4 ⁸ / ₄	:29	:29	:29	:29	1:58	9 ⁸⁰	DesR	SteS	MrCommodoreRcktFrgh	GfbrkYnk		
May9	4 FlmD	14ft	Nw1r5000l-L	6600	:29	:58	1:27	1:56	8	2	2 ¹ / ₂	1 ² / ₄	2 ¹ / ₄	2 ⁴ / ₄	2 ⁵ / ₄	:29	:29	:29	:29	1:57	2 ⁸⁵	DesR	SteS	AllBtsOnRd	Minotaur	SweetAlex	
May2	2 FlmD	17ft	Nw1r5000l-L	6600	:28	:58	1:27	1:56	8	2	2 ¹ / ₂	2 ¹ / ₄	3 ³ / ₄	3 ⁴ / ₄	3 ³ / ₄	:28	:30	:29	:29	1:56	10 ⁰⁰	DesR	SteS	JmmyBlb	LakersBank	Minotaur	
Apr25	4 FlmD	5ft	Nw1r5000l-L	6600	:29	:59	1:29	1:58	8	3	2 ² / ₄	2 ¹ / ₄	2 ¹ / ₄	3 ³ / ₄	4 ³ / ₄	:29	:30	:29	:29	1:59	6 ⁶⁰	DesR	SteS	ExctlyMyTypRdlnDWrnglr	McPleasant		
5	8-1 ACEFORTYFOUR HAWK (\$928)																										
Tr: Steven Hudson 175 White-Orange-Blue (134-13-17-16-.207)												Tr: Steven Hudson (3-0-0-0-.0)															
BREEDER: Colin Densley Burrows,St Catharines,ON												BREEDER: Joseph Montour,Ohswéken,ON															
BLACK	B c 3 by Dali-Just Warrawee-Astrees	Last 5 Sts - \$928																									
Jun7	6 Grv ^{5/8}	16ft	Nw1r8000lcd	6600	:27	:57	1:25	1:56	8	1	4 ⁵ / ₄	3 ³ / ₄	2 ³ / ₂	2 ⁵ / ₂	4 ¹⁰ / ₄	:28	:29	:28	:31	1:57	20 ⁷⁰	HudS	HudS	HrbtrAmbrs	HyJdHnvr	ThDrkPnthr	
May22	6 Lon	25ft	City london	8000	:28	:58	1:26	1:56	5	5	5 ⁸ / ₄	5 ⁸ / ₄	5 ⁸ / ₄	5 ⁸ / ₄	5 ⁹ / ₄	:30	:29	:28	:29	1:58	20 ⁷⁵	HudS	HudS	Gglygyggygty	VgBIChp	FmrsBch	
May15	5 Lon	18ft	City london	8000	:28	:57	1:25	1:55	6	scratched - vet(sick)						:29	:29	:29	:29	1:57	2 ⁸⁵	DesR	SteS	AllBtsOnRd	Minotaur	SweetAlex	
May9	1 FlmD	14ft	Nw1r5000l	6600	:28	:57	1:26	1:56	8	2	5 ⁵ / ₂	3 ² / ₂	5 ⁶ / ₂	8 ¹⁰ / ₄	8 ¹⁴ / ₄	:30	:28	:30	:31	1:59	3 ⁷⁰	HudS	HudS	JmmyWhsprs	GfbrkYnk	RdlnDWrnglr	
May3	6 Wbs ^{7/8}	15ft	Qua		:29	1:00	1:29	1:57	9	1	1 ¹ / ₂	1 ¹ / ₂	1 ² / ₄	2 ¹ / ₄	2 ¹ / ₄	:29	:31	:28	:27	1:57	nb	HudS	HudS	LouGrant	AcfrtyrHwk	PartyPass	
6	12-1 B JS CHOICE (\$0)																										
Tr: Jason Ryan 170 Green-White (688-94-111-102-.275)												Tr: Mark Goddard (156-5-15-25-.138)															
BREEDER: William Brown,Rick Rier,Hanover,ON												BREEDER: William Brown,Rick Rier,Hanover,ON															
YELLOW	B g 3 by Big Jim-Karans Choice-Sportswriter	Last 5 Sts - \$0																									
Jun7	3 Grv ^{5/8}	16ft	Nw1r8000lcd	6600	:27	:56	1:24	1:54	9	8	9 ¹³ / ₁₆	9 ¹⁴ / ₁₆	9 ¹⁴ / ₁₆	9 ¹⁵ / ₁₆	8 ²⁰ / ₁₆	:29	:29	:28	:30	1:58	30 ⁸⁵	MooT	GodM	MrCommodoreBrkdGrg	VgBIChp		
May29	2 Grv ^{5/8}	21ft-1	Qua		:30	1:00	1:30	2:00	6	2	2 ² / ₄	2 ² / ₄	2 ⁴ / ₄	2 ⁴ / ₄	2 ⁴ / ₄	:31	:30	:30	:29	2:00	3 ¹	nb	FilS	GodM	TmrHnvr	BjsChoice	Bighonor
7	5-2 POUND CAKE JIM (\$1,650)																										
Tr: Jean Bernard Renaud Green-Black-White (44-8-6-2-.272)												Tr: William Walker (81-17-15-8-.345)															
BREEDER: Leonard Gamble,Etobicoke,ON												BREEDER: Leonard Gamble,Etobicoke,ON															
PINK	Br c 3 by Big Jim-Katies Gal-Camluck	Last 5 Sts - \$1,650																									
Jun7	9 Grv ^{5/8}	16ft	Nw1r8000lcd	6600	:28	:57	1:26	1:55	8	4	7 ⁷ / ₁₆	3 ⁴ / ₄	2 ² / _h	2 ¹ / ₂	2 ¹ / ₂	:29	:28	:27	:29	1:55	3 ⁶⁵	RenJ	WalJ	WrdRvvl	PndCkjm	MelsLegacy	
May23	1 FlmD	21ft	Nw1r5000l	6600	:29	:59	1:27	1:57	7	1	4 ⁴ / ₁₆	5 ⁵ / ₁₆	x ⁶ / ₁₆	5 ¹⁰ / ₁₆	3 ⁷ / ₁₆	:30	:30	:30	:29	1:59	17 ⁰⁵	RenJ	WalJ	McPleasant	GfbrkYnk	TwnBcmchTm	
Apr6	1 FlmD	14ft	Qua		:29	1:00	1:29	1:59	1	1	5 ⁸ / ₁₆	5 ⁹ / ₁₆	5 ¹⁴ / ₁₆	5 ¹⁷ / ₁₆	5 ¹¹ / ₁₆	:31	:31	:30	:28	2:01	nb	RenJ	WalJ	CrsnsGd	BestDay	MlfrMrg	
8	15-1 ALLSTARWATUACALLIT (\$1,332)																										
Tr: Travis Henry 170 Light Blue-White (950-158-154-137-.304)												Tr: Gordon Dancetovic (25-1-2-2-.111)															
BREEDER: Kenneth Albrecht,Milverton,ON												BREEDER: Kenneth Albrecht,Milverton,ON															
GREY	B c 3 by All Bets Off-Smile By A Mile-Grinfromeattear	Last 5 Sts - \$300																									
Jun7	3 Grv ^{5/8}	16ft	Nw1r8000lcd	6600	:27	:56	1:24	1:54	9	6x	3 ⁴ / ₄	3 ⁴ / ₄	8 ¹² / ₁₆	8 ¹⁴ / ₁₆	9 ²⁶ / ₁₆	:28	:29	:30	:32	1:59	7 ⁶⁵	CouS	DanG	MrCommodoreBrkdGrg	VgBIChp		
May30	3 FlmD	16ft	Nw1r5000l	6600	:29	:59	1:28	1:58	9	6	6 ⁹ / ₁₆	3 ² / ₄	3 ³ / ₄	3 ³ / ₄	6 ¹ / ₂	8 ⁸ / ₈	:31	:28	:29	:31	2:00	26 ⁶⁰	MacB	DanG	NightSwing	GfbrkYnk	AcfrtyrZs
May25	2 FlmD	17ft	Qua		:31	1:01	1:30	1:59	2	2	3 ¹ / ₄	1 ¹ / ₄	1 ¹ / ₄	2 ² / ₄	2 ² / ₄	:32	:29	:28	:29	1:59	nb	MacB	DanG	SwtGdgts	Allstrwdlct	DmndRdyr	
Jan11	6 FlmD	1gd-1	Nw1r5000l	6000	:29	:59	1:28	1:57	9	2	7 ¹² / ₁₆	7 ¹⁰ / ₁₆															

JOIN THE FUN!

All ages welcome!

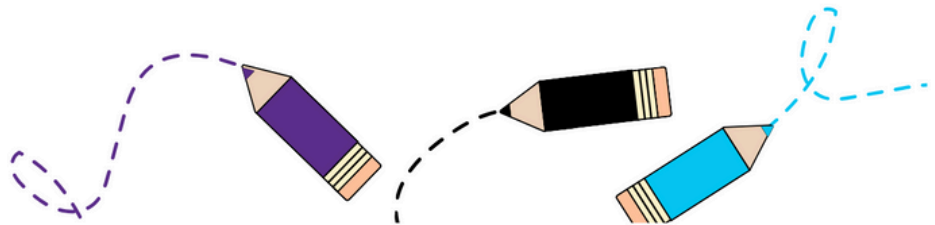


NEIGHbourhood

- LEARN ABOUT HORSERACING
- GET FREE STUFF
- DO FUN ACTIVITIES
- AND MORE...

See GRR Ambassador, Tom, or a mutuel teller to receive your NEIGHbourhood activity bag!

grandriverraceway.com



THE GRANDWAY *Lounge*

TAKEOUT AVAILABLE.
Seating right next to the track!

Check out the menu at
thegrandway.com

Grand River Raceway Race Night Schedule

June - September | Monday/Wednesday/Friday | Post Time: 6:30 pm



2024

JUNE						
S	M	T	W	T	F	S
						1
2	3	4	5	6	7	8
9	10	11	12	13	14	15
16	17	18	19	20	21	22
23	24	25	26	27	28	29
30						

JULY						
S	M	T	W	T	F	S
	1	2	3	4	5	6
7	8	9	10	11	12	13
14	15	16	17	18	19	20
21	22	23	24	25	26	27
28	29	30	31			

AUGUST						
S	M	T	W	T	F	S
				1	2	3
4	5	6	7	8	9	10
11	12	13	14	15	16	17
18	19	20	21	22	23	24
25	26	27	28	29	30	31

SEPTEMBER						
S	M	T	W	T	F	S
1	2	3	4	5	6	7
8	9	10	11	12	13	14
15	16	17	18	19	20	21
22	23	24	25	26	27	28
29	30					

*Monday, August 5 - Industry Day; Post time: 12:30pm

7445 Wellington County Road 21, Elora, ON N0B1S0

grandriverraceway.com • 519-846-5455



2024

RACE SEASON

JUNE 5 - OPENING NIGHT

JUNE 12 - NEW TRACK RIBBON CUTTING

JULY 12 - WIENER DOG RACES

AUG 5 - INDUSTRY DAY

AUG 30 - HARNESS THE HOPE

SEPT 6 - OSS 50TH & CARETAKERS NIGHT

GRANDRIVERRACEWAY.COM/EVENTS



TOP DASH WINNING DRIVERS June 5 - June 10, 2024

DRIVERS	minimum of 1 starts				MONEY	URS	WIN
	Sts	1st	2nd	3rd			
Sorrie Austin	15	6	1	0	23,815	.4370	40%
Henry Travis J	21	4	2	4	22,732	.3069	19%
Haughan Anthony P	13	3	0	1	11,410	.2564	23%
Macdonald Brett A	20	3	3	4	18,855	.3000	15%
Moore Tyler	13	3	0	1	11,924	.2564	23%
Harris J Bradley	16	2	2	2	13,409	.2361	12%
Kelly Colin	16	2	1	0	10,456	.1597	12%
Baillargeon Mario J	2	1	0	0	3,600	.5000	50%
Desroche Ryan P	5	1	0	0	4,396	.2000	20%
Macdonell Mark A	3	1	0	0	3,230	.3333	33%
Mcclure Bob	1	1	0	0	3,250	1.0000	100%
Ratchford Todd	6	1	1	1	5,963	.3148	17%
Ryan Jason D	19	1	5	8	20,904	.3392	5%
Spence Dale Pr	7	1	1	0	6,182	.2222	14%
Barrington John R	2	0	0	0	310	.0000	0%
Chretien Guy	1	0	0	0	0	.0000	0%
Coulter Scott	18	0	0	1	2,420	.0185	0%
Cullen Travis A	5	0	0	0	1,504	.0000	0%
Day Natasha K	1	0	0	0	400	.0000	0%
Fillion Samuel	12	0	5	2	10,689	.2870	0%
Gagnon Jimmy	3	0	0	0	290	.0000	0%
Gimblett Carter A	1	0	0	0	496	.0000	0%
Gois Ondrej	2	0	0	0	0	.0000	0%
Gregg Louis P	2	0	1	1	2,580	.4444	0%
Holliday Ryan L	3	0	0	0	1,485	.0000	0%

TOP DASH WINNING TRAINERS June 5 - June 10, 2024

TRAINERS	minimum of 1 starts				MONEY	URS	WIN
	Sts	1st	2nd	3rd			
Bossence Kyle J	6	4	0	0	13,950	.6667	67%
Crone Meg J	2	2	0	0	6,400	1.0000	100%
Baillargeon Benoit O	1	1	0	0	3,600	1.0000	100%
Boyd Rod V	3	1	0	1	3,692	.4444	33%
Bradshaw Clare S	1	1	0	0	3,300	1.0000	100%
Budd William W	1	1	0	0	3,250	1.0000	100%
Cullen Jodie M	6	1	0	0	4,734	.1667	17%
Dupont Marie Helene	2	1	1	0	5,250	.7778	50%
Ellis Kenneth H	1	1	0	0	4,400	1.0000	100%
Forgie Pam M	1	1	0	0	3,250	1.0000	100%
Gebhardt Roger	1	1	0	0	3,400	1.0000	100%
Graham Katelyn M	1	1	0	0	3,250	1.0000	100%
Kwietniowski Michael J	2	1	0	1	4,044	.6667	50%
Laver Darryl D	1	1	0	0	3,250	1.0000	100%
Lendvoy Ashley	4	1	1	0	3,950	.3889	25%
Libby Jason A	2	1	0	0	4,375	.5000	50%
Macquarrie Mark L	2	1	0	1	4,380	.6667	50%
Marfisi Duane F	2	1	0	0	4,400	.5000	50%
Merner Garry M	2	1	0	0	5,500	.5000	50%
Moore Ian	1	1	0	0	4,000	1.0000	100%
Moreau Richard	4	1	1	1	6,089	.4722	25%
Pentland John R	2	1	0	1	3,892	.6667	50%
Pereira Joe H	2	1	1	0	3,375	.7778	50%
Ratchford Mary M	3	1	0	1	4,338	.4444	33%
Simpson Riley M	2	1	0	0	2,940	.5000	50%

Pari-mutuel wagering is conducted by:
Woodbine Entertainment Group

Racing is Conducted by:

Grand River Raceway Corporation

7445 Wellington County Rd. 21
Elora, ON • N0B 1S0
Admin: (519) 846-5455
Email: info@grandriverraceway.com
Web: www.grandriverraceway.com

Grand River Raceway Corporation

Chair G. Green
Director D. Whale
Director B. Ross
Director K. Giddy
Director I. Scott
Director D. Key

Racing Officials

Associate Judge Craig Walker
Associate Judge Kelly Counsell
Associate Judge Larry Hughes
Associate Judge
Track Veterinarian P. Meyers D.V.M
Race Secretary T. O'Sullivan
Race Office C. Pattison
Starter M. Strome
Paddock Judge L. Jackson
Charter R. Cudmore
Announcer G. Guy
Photographer Tiffany Chantel Photography (519-889-1049)

Management Team

Raceway Manager J. MacDonald
Vice President - Operations K. Giddy
Vice President - Finance I. Scott
Facilities Manager D. McCaig
Human Resources Manager R. Edmondson

A.G.C.O.

Chair D. Forestell
Vice Chair P. Stoyan
Member H. Reinhart
Member N. Desai
Member D. McLarty
Member C. Vaccarino

AGCO ADMINISTRATION

CEO & Registrar Dr. K. Schnarr
Chief Operating Officer D. Forestell
Director Regulatory Compliance Branch B. Stone
Director Regulatory Compliance Branch J. Locke
Senior Manager Racing M. Wilson
Manager Racing T. Durand
Acting Manager Racing D. Moretti
Senior Manager, Veterinarian Services Dr. A. Chambers
Manager Veterinarian Services P. Chesterfield

First Turn Printing

The Official Program is published each racing day by First Turn Printing Office: 12 Dawson Road, Unit 3 Orangeville, Ontario, Canada. L9W 2W2. Telephone (519) 938-1523. © 2023 First Turn Printing. All rights reserved. Material printed herein may not be reproduced, retransmitted, or stored in any data retrieval system without the written permission of the copyright owners. Opinions expressed and information published herein are not to be construed as encouragement to wager. Every effort is made to ensure the accuracy of the information contained herein but First Turn Printing and the racing association cannot accept any responsibility for loss or inconvenience attributed to errors or omissions.

Children

Children are welcome at Grand River Raceway, but must be under adult supervision at ALL times.

Program Policy – Grand River Raceway 'live' racing programs only:

If less than 5 races have run, guests may exchange the program for another 'live' program. The actual canceled program must be presented for exchange. No refunds.

If 5 or more races have run, there will be no exchange.

General Operations

Supervision of the pari-mutuel betting and drug control services is provided by the Canadian Pari-Mutuel Agency (CPMA), a division of Agriculture Canada. All pools are calculated and distributed in accordance with these Regulations. All tickets should be held until the result of the race is declared official. No minor shall purchase or cash a pari-mutuel ticket. Approximate odds represent the probable pay-out price of the win pool at the time they are posted and have no bearing on the pay-out price for any other pool. Where approximate odds for any horse are posted as "1-9", the pay-out price based on a \$2 bet on the win pool may be as low as \$2.10. All tickets should be kept until the result of the race is declared official. No ruling made by the Judges or the Alcohol And Gaming Commission of Ontario (AGCO) with regard to distribution of purse money or the placing of horses in the order of finish, after the race has been declared official shall have any bearing on the pay-out prices or distribution of pari-mutuel pools. In the case of foreign separate pool betting, the rules of racing are those of the governing body that regulates the race.

Cancellation Policy

In the event that cancellation of races should result for any reason after four races have been run, no refunds or issuance of rain checks will be made. If a cancellation results before the completion of four races, and upon producing the day's Official Program at the seller's booth, a next day's racing program will be exchanged.

Refunds

Subject to the provisions of the Federal Regulations, all monies bet in all pools on a race are refunded in the event that the race is canceled, declared off, declared no contest or postponed beyond the racing card for which it was scheduled. Subject to the Regulations, all monies bet on a horse are refunded if the horse is a late scratch or does not receive a fair start. Where a horse that is part of an entry is a late scratch and at least one horse of that entry or mutual field starts in the race, all tickets purchased on that entry or mutual field remain valid, and the purchase price of any such ticket shall not be refunded.

Fair Start

The starter shall have control of the horses from the formation of the post parade until a start has been determined. For purpose of this rule, the determination of the start is when the horses have passed the starting point and have been released by the starter. 22.03 (h) There shall be no recall after the horses have been released by the starter. 22.03 (i) The starter shall endeavour to get all horses away in position and on gait. The starter shall only sound a recall for the following reasons: (i) A horse scores ahead of the starting gate; (ii) There is interference before the horses have reached the starting point; (iii) A horse has broken equipment, which the starter notices; (iv) A horse falls before the starting point; (v) A horse coming to the starting gate in the wrong position; (vi) A malfunction of the starting gate or in the interests of safety. 22.03 (l) If a horse has not reached the Fair Start Pole when the horses are released at the starting point by the starter, the judges shall cause the "inquiry" sign to be displayed immediately.

Breaking Rule

When a horse breaks from its gait in a race the driver shall: (a) take the horse to the outside of other horses where clearance exists and; (b) properly attempt to pull the horse to its gait; (c) lose ground while on the break. If there has been no violation of (a), (b) or (c) above, the horse shall not be set back unless a contending horse on its gait is lapped on the hind quarter of the breaking horse at the finish, however, notwithstanding the foregoing, if interference caused by another driver(s) or horse(s) has caused the horse to be on a break at the finish, the judges may, in their discretion determine not to set the horse back even if a contending horse on its gait is lapped on the hind quarter of the breaking horse at the finish. The judges may set any horse back one or more places if, in their judgment, any of the above violations have been committed, or if the horse goes on an extended break, and the driver may be penalized.

Entry or Field in an Exacta

Exactor pools on races that have an entry (1 and 1A and/or 2 and 2B) or mutual field (14f, 15f...) will not offer a wager combining both halves of the same betting interest (ie. 1-1, 2-2, field-field). If the same betting interest finishes first and second, the exactor payout will be on those horses finishing first and third.

Daily Double & Late Double Betting

Where the daily double feature is operated, the daily double is a betting transaction in which the purchaser of a ticket undertakes to select the winners of each of the two races specified for the daily double and that if the purchaser of a daily double ticket fails to pick the winner of the first half of the daily double his bet is void and that all tickets in the second half of the daily double not coupled with the declared official winner of the first half of the daily double are void no matter what circumstances might affect the programmed running of the second half of the daily double. The daily double is operated as an entirely separate pool and is not affected by wagering in other pools operated on the daily double races. Should a horse or horses (not coupled with a starter) be excused from starting in the second race of the daily double after the first race of the daily double has been declared official, holders of all daily double tickets on such horses, coupled with the winner of the daily double race, shall participate in the Consolation Double pool.

Exacta Betting

Where the exacta feature is operated, the exacta is a betting transaction in which the purchaser of a ticket undertakes to select the first two horses to finish, in the exact order of finish, in the race on which the feature is operated.

Trifecta Betting

A Trifecta bet is a betting transaction in which the purchaser of a ticket undertakes to select the first three horses representing different betting interests to finish, in the exact official order of finish, in the race on which the feature is operated.

Superfecta Betting

A Superfecta bet is a betting transaction in which the purchaser of a ticket undertakes to select the first four horses representing different betting interests to finish, in the exact official order of finish, in the race on which the feature is operated.

Super Hi-5 Betting

The Super Hi-5 wager is a betting transaction in which the purchaser of a ticket undertakes to select the first five horses representing different betting interests to finish, in the exact official order of finish, in the race on which the feature is operated. In the event no one correctly selects all five winners in order, 100 per cent of the net pool will be carried over to the next Super Hi-5 race.

Pick-3 or Pick-4 Betting

The Pick 3 & Pick 4 bets are betting transactions in which a purchaser of a ticket undertakes to select the official winners of each of three or four successive races specified for the Pick 3 & Pick 4 respectively. Winning tickets for the Pick 3 & Pick 4 are determined in the following sequence: A) winners of all legs, B) most winners, then refund. If there is a change of surface in any leg that is NOT made known to the public prior to wagering for that pool closing, that leg will pay on all runners. If there are no winners in any leg of a pool, the entire pool is refunded.

Pick 5 Betting

The Pick 5 bet is a betting transaction in which a purchaser of a ticket undertakes to select the official winners of each of five successive races specified for the Pick 5 respectively. If no one has correctly selected all 5 winners, the entire net pool is carried over to the next available PICK 5.

Pick 3, Pick 4 & Pick 5 Scratches

In the event a Pick 3, Pick 4 or Pick 5 ticket designates as a selection a horse which is scratched, excused or determined by the Stewards/Judges to be a non-starter in any of the races comprising the Pick 3, Pick 4 or Pick 5 the favourite, as evidenced by the amount wagered in the win pool at the time of the start of the race in which the scratch occurred, will be substituted for the non-starting selection. In the event that the money bet in the win pool for two or more favourites is identical, the selection with the lowest program number shall be substituted for the non-starting selection. However, if a scratch occurs in any leg of the Pick 3, Pick 4 or Pick 5 pools before the pool is closed, a ticket including the scratched horse may be cancelled.

Pari-Mutuel Deductions

The Association deducts and retains the following percentages from wagers placed on Grand River Raceway in Ontario which are then shared with the horsepeople. Horsepeople receive a further 2% on all wagers and an additional 2% on trifecta wagering. The Ontario Government retains .5% on all bets placed in Ontario. The Canadian Government retains .8% on all wagers placed in Canada.

Win, Place, Show: 13.65%, Exacta: 17.2%, Trifecta: 21.7%, Super: 23%; all other pools: 11.7%.

Allowances

Allowances for Ontario Sired horses at Signature tracks is 50% and are based on the condition of the class. Allowances for purse earnings at Signature tracks are 25% for fillies and mares (vs colts and geldings) and are based on the conditions of the race only.

Rule 7.15

No association shall allow a person under 18 years of age to purchase or cash a ticket. For the purposes of this rule, a "ticket" is defined as a receipt or voucher that is issued by an association for one or more bets on a race or races. The association shall ensure that signs are clearly posted in all areas, or in application forms, where tickets are purchased or cashed, advising the public of the age restriction.

Advance Notice Of New Bet Cancellation Options

No claim shall be considered for tickets thrown away, lost, changed, destroyed or mutilated beyond recognition. Payment of wagers will only be made upon presentation of valid parimutuel tickets. The following Bet Cancellation Policy is in effect at Grand River Raceway and the Grand River Teletheatre site. A bet can be cancelled up until "stop betting" for the following reasons: 1) A wrong ticket (even after you have left the mutual window) e.g. wrong track; 2) A change in race surface (turf - dirt) or race distance; 3) A scratch of part of an entry (1-1A) or part of a field Self Serve Cancellation; Cancellation of Self Serve Tickets via mutual sellers (see below)

Mutuel Teller Cancellation

1) Open cancellation: ticket must be cancelled prior to stop betting of the race.
2) For tickets of \$100 or more you must write your name, address and telephone number on the back of the ticket before requesting the cancellation. You will also be required to present 1 piece of photo identification to the teller.

When your bets cannot be cancelled:

- 1) After a pool has been closed (ie betting has been stopped)
- 2) For tickets of \$100 or more, if photo ID is not presented or a full name, address and telephone number has not been legibly written on the back of the ticket
- 3) Under circumstances affecting the integrity of a pool or display of pari-mutuel data
- 4) An officer or the association refuses to cancel and refund the bet under subsection 57

Children

Children are welcome at Grand River Raceway, but must be under adult supervision at ALL Times.