

MONDAY, AUGUST 21, 2023

Official Program

\$2.50

taxes included

Harness Racing

from



POST TIME 6:30 PM



Grand River Raceway Entries

HORSES

| | |
|--------------------|---|
| ALLSMOKEANDMIRRORS | 2 |
| AUTUMNS PASSION | 7 |
| BETTER BE GOUDA | 8 |
| BETTER DRIVE | 2 |
| BETTOR B GOING | 9 |
| BETTOR IN THE DARK | 4 |
| BLACK TO REALITY | 2 |
| BOLT POWER | 8 |
| BUGSY MAGUIRE | 8 |
| CARIBEAN SKY | 6 |
| CHAUD HOLIDAY | 1 |
| CLARES SCAMPER | 4 |
| COUNTRY CHARM | 4 |
| CREDIT KAWHI | 5 |
| CURIOUS CORTEZ | 9 |
| D M JOHNWICK | 9 |
| DRAGON TERROR | 5 |
| DUCHESS OF BRANT | 5 |
| EASYBUTIMNOTCHEAP | 4 |
| FASHION FORWARD | 7 |
| GLENBORO | 5 |
| GRACEFUL CHINA | 6 |
| HAD ME A WHISKEY | 6 |
| HAMSANDWICH | 8 |
| HANDBAGOFCHEEZIES | 3 |
| HEZA HANDY MAN | 9 |
| HOPE N GLORY | 1 |
| IDEAL JET | 8 |
| JEMENAR | 7 |
| LAST BEACH | 9 |
| LOLAS SUNSHINE | 5 |
| LOVEMYROCKINBIRD | 9 |
| LYONS LADYLUCK | 3 |
| MATERNAL INSTINCT | 2 |
| MATTHEWS RITA | 7 |
| MELISSAS DAY | 6 |
| MISS DEW WRITE | 3 |
| MOLLYS GAME | 2 |
| MUSCLE CHARM | 6 |
| NO PLACE TO HIDE | 4 |
| PANNINGFORTREASURE | 5 |
| PARTYINTHESHADOWS | 8 |
| PINK GEE | 2 |
| P L OLIVER | 8 |
| PREMIER DELIGHT | 3 |
| QUEEN OF THE DECK | 2 |
| REMISSANCE | 7 |
| SANDOON | 1 |
| SHAY SEELSTER | 4 |
| SINGLE TO MINGLE | 2 |
| SOUTHBEACH HANOVER | 9 |
| SPORTS SECTION | 8 |
| STEEL BEAUTY | 5 |
| ST LADS BEAT IT | 9 |
| STONEBRIDGE PHEME | 3 |
| STORYBOOK BELLA | 5 |
| SWEETER THAN LOU | 4 |
| SWEET MOLLY | 7 |
| TAYLORS CREDIT | 9 |
| THE BLONDY | 1 |
| TWENTYEIGHT LATE | 5 |
| ULTIMATE TWIX | 4 |
| WASAGA | 3 |
| WATCH MY HONEYDRIP | 3 |
| WELL ASSESSED | 4 |
| YELL IT | 1 |

TRAINER

| | |
|-------------------------|---------|
| ANDREW, RACHEL E | 8 |
| BARRINGTON, SHAYNE A | 2,3 |
| BARSS, CRAIG A | 8 |
| BISSETT, PATRICK D | 5 |
| BOURASSA, RAPHAEL | 7,8 |
| BOURASSA, RENE | 2 |
| BURGESS, BLAIR R | 2 |
| CAMERON, PAUL L | 6 |
| CARROLL, ANGELA M | 5 |
| CICERO, GINO | 1 |
| CRONE, MEG J | 7 |
| CULLEN, JODIE M | 5 |
| DAWSON, CARL W | 4 |
| DAY, NATASHA K | 5,9 |
| DUPONT, MARIE HELENE | 7 |
| DUPIUS, MATTHEW D | 8 |
| ENBERG, T MARIELLE | 8 |
| FELLOWS, ROBERT KYLE | 5 |
| FITZSIMMONS, LARRY N | 7 |
| GEISEL, REBECCA R | 4 |
| GUILLEMETTE, FRANCIS | 8 |
| HASKELL, KRISTOPHER D | 5 |
| HENRY, WAYNE W | 6 |
| HILL, CHRIS A | 2 |
| HOLDING, JOHN J | 1 |
| HOLLIDAY, DAVID L | 1 |
| HORNER, MICHAEL A | 9 |
| HUNT, JEFFREY P | 3 |
| JEWITT, LARRY B | 5 |
| JONES, KEITH E | 1,6 |
| LEBLANC, MICHELLE M | 3 |
| LENDVOY, ASHLEY | 4 |
| LEPAGE, LORI A | 7,9 |
| LINDSEY, DONALD | 9 |
| MACDONALD, BRUCE A | 7 |
| MACINTOSH, BLAKE C | 8 |
| MAGUIRE, JEAN-FRANCOIS | 1 |
| MARCHILDON, JEAN PAUL G | 3 |
| MCINTOSH, ROBERT A | 4 |
| MCNIVEN, SCOTT P | 2,5 |
| MOREAU, RICHARD | 2,4,9 |
| MYERS, TIM R | 5 |
| NADEAU, ERIC | 3 |
| NIXON, DEAN L | 4 |
| OLIVER, KENNETH D | 4 |
| PERRAULT, WILFORD | 3,9 |
| POSAN, LES | 3 |
| PUDDY, VICTOR C | 9 |
| RATCHFORD, TODD | 4 |
| REID, PAUL W | 6 |
| STEACY, SHAWN F | 2,4,6,9 |
| TOSCANI, LAURA | 8 |
| WALLACE, BENJAMIN | 9 |
| WELLWOOD, JAMES D | 2 |

DRIVER

| | |
|---------------------|---------------|
| BOYD, NICHOLAS R | 3,8,9 |
| BYRON, STEPHEN R | 1 |
| COULTER, SCOTT | 2,3,4,6,7,8,9 |
| DAY, NATASHA K | 5,9 |
| DESROCHE, RYAN P | 5 |
| FILLION, SAMUEL | 2,3,4 |
| HARRIS, J BRADLEY | 2,4,5,6,8,9 |
| HAUGHAN, ANTHONY P | 2,3,5,7,9 |
| HENRY, TRAVIS J | 1,2,3,4,5,8 |
| HENRY, WAYNE W | 6 |
| HOLLIDAY, RYAN L | 1,7 |
| HORNER, MICHAEL A | 9 |
| HOUSE, LORNE S | 2,5 |
| HUDON, STEVEN | 8 |
| HUNT, JEFFREY P | 3 |
| JONES, KEITH E | 1,6 |
| KELLY, COLIN | 9 |
| MACDONALD, BRETT A | 2,3,4,5,7,8,9 |
| OLIVER, KENNETH D | 4 |
| RATCHFORD, TODD | 4 |
| RICHARDSON, BRUCE M | 1 |
| ROONEY, GARRETT L | 4,5 |
| RYAN, JASON D | 6,7,8,9 |
| SORRIE, AUSTIN | 7,8 |
| THIESSEN, DARYL | 2,4,5 |

Track Abbreviations

| Abbr. | Size | Track, Location | Speed | Rating |
|-------|-------|---|--------|--------|
| Bang | 1/2 | Bangor Raceway, Bangor, Maine | 2:03 | |
| BgD | 5/8 | Players' Bluegrass Downs, Paducah, Kentucky | 2:00.3 | |
| BR | 1/2 | Buffalo Raceway, Hamburg, New York | 2:01.1 | |
| Btva | 1/2 | Batavia Downs, Batavia, New York | 2:01 | |
| CalX | 1 | Cal-Expo, Sacramento, California | 2:00.1 | |
| CDP | 1/2 | Charlottetown Driving Park, Charlottetown, PEI | 2:00 | |
| Clntn | 1/2 | Clinton Raceway, Clinton, Ontario | 2:01.2 | |
| Col | 1-1/4 | Colonial Downs, New Kent, Virginia (one turn) | 1:57 | |
| Dela | 1/2 | Delaware County Fair, Delaware, Ohio | 1:59.1 | |
| DD | 5/8 | Dover Downs, Dover, Delaware | 1:59.4 | |
| Dres | 1/2 | Dresden Raceway, Dresden, Ontario | 2:00.4 | |
| DuQ | 1 | Du Quoin State Fair, Du Quoin, Illinois | 1:57.3 | |
| EPR | 1/12 | Exhibition Park Raceway, Coldbrook, New Brunswick | 2:01.3 | |
| Fhld | 1/2 | Freehold Raceway, Freehold, New Jersey | 2:00 | |
| FImD | 1/2 | Flamboro Downs, Dundas, Ontario | 1:58.3 | |
| FrD | 5/8 | Fraser Downs, Surrey, British Columbia | 1:58.2 | |
| Frdt | 1/2 | Fredericton Raceway, Fredericton, New Brunswick | 2:00.1 | |
| GeoD | 5/8 | Georgian Downs, Barrie, Ontario | 1:57.1 | |
| Gosh | 1/2 | Historic Track, Goshen, New York | 2:02.2 | |
| GRvr | 1/2 | Grand River Raceway, Elora, Ontario | 1:59.1 | |
| HAY | 1/2 | Hippodrome Gatineau, Aylmer, Quebec | 2:01.2 | |
| Har | 1/2 | Harrington Raceway, Harrington, Delaware | 2:00.2 | |
| Haw | 1 | Hawthorne Racecourse, Stickney, Illinois | 1:58.3 | |
| HM | 7/8 | Hippodrome de Montreal, Montreal, Quebec | 1:56.2 | |
| Hnvr | 1/2 | Hanover Raceway, Hanover, Ontario | 2:00 | |
| HoP | 1 | Hoosier Park, Anderson, Indiana | 2:00 | |
| HP | 5/8 | Hazel Park Harness, Hazel Park, Michigan | 2:00.2 | |
| Ind | 1 | Indiana State Fair, Indianapolis, Indiana | 1:59.2 | |
| Indy | 1 | Indiana Downs, Shelbyville, Indiana | 1:59.2 | |
| Inv | 1/2 | Inverness Raceway, Inverness, Nova Scotia | 2:03 | |
| Jack | 1/2 | Jackson Harness Raceway, Jackson, Michigan | 2:02.3 | |
| KD | 5/8 | Kawartha Downs, Frasersville, Ontario | 1:57 | |
| Leb | 1/2 | Lebanon Raceway, Lebanon, Ohio | 2:01.3 | |
| Lex | 1 | The Red Mile, Lexington, Kentucky | 1:58 | |
| Lon | 1/2 | Western Fair Raceway, London, Ontario | 2:01.1 | |
| M | 1 | The Meadowlands, East Rutherford, New Jersey | 1:56.3 | |
| Mea | 5/8 | The Meadows, Meadow Lands, Pennsylvania | 1:59.2 | |
| MR | 1/2 | Monticello Raceway, Monticello, New York | 2:01.3 | |
| Nfld | 1/2 | Northfield Park, Northfield, Ohio | 2:00 | |
| Nor | 1/2 | Northville Downs, Northville, Michigan | 2:01.3 | |
| OD | 1/2 | Ocean Downs, Berlin, Maryland | 2:01 | |
| PcD | 5/8 | Pocono Downs, Wilkes-Barre, Pennsylvania | 2:00.2 | |
| PM | 1 | Prairie Meadows, Altoona, Iowa | 2:01 | |
| PPK | 5/8 | Pompano Park, Pompano Beach, Florida | 1:59 | |
| PRc | 5/8 | Plainridge Racecourse, Plainville, Massachusetts | 2:00.2 | |
| Que | 1/2 | Sulky Quebec, Quebec City, Quebec | 2:02.2 | |
| RC | 5/8 | Rideau Carleton Raceway, Ottawa, Ontario | 1:57.4 | |
| RcR | 5/8 | Rosecroft Raceway, Ft. Washington, Maryland | 1:59.1 | |
| Rock | 1 | Rockingham Park, Salem, New Hampshire | 1:59.4 | |
| RP | 5/8 | Raceway Park, Toledo, Ohio | 2:00.1 | |
| Sand | 5/8 | Sandown Park, Sidney, British Columbia | 2:00 | |
| Sar | 5/8 | Hiawatha Horse Park, Sarnia, Ontario | 1:57.2 | |
| Scar | 1/2 | Scarborough Downs, Scarborough, Maine | 2:03.2 | |
| ScD | 5/8 | Scioto Downs, Columbus, Ohio | 1:59.3 | |
| SpCk | 5/8 | Sports Creek Raceway, Swartz Creek, Michigan | 2:00.4 | |
| Spr | 1 | Illinois State Fair, Springfield, Illinois | 1:56.4 | |
| SgHR | 1/2 | Saginaw Harness Raceway, Saginaw, Michigan | 2:00.3 | |
| Stga | 1/2 | Saratoga Harness, Saratoga Springs, New York | 2:01.2 | |
| StP | 5/8 | Stampede Park, Calgary, Alberta | 1:58.1 | |
| Summ | 1/2 | Summerside Raceway, Summerside, PEI | 2:01 | |
| Sycs | 1 | Syracuse Mile, Syracuse, New York | 1:58.2 | |
| TrR | 1/2 | Thunder Ridge, Prestonsburg, Kentucky | 2:02 | |
| TrRv | 1/2 | Sulky Trois-Rivieres, Trois Rivieres, Quebec | 2:01.4 | |
| Trur | 1/2 | Truro Raceway, Truro, Nova Scotia | 2:01 | |
| Ver | 7/8 | Vernon Downs, Vernon, New York | 1:58 | |
| Wbsb | 7/8 | Woodbine Mohawk Park, Campbellville, Ontario | 1:54.4 | |
| Wood | 1/2 | Woodstock Raceway, Woodstock, New Brunswick | 2:02.3 | |
| YR | 1/2 | Yonkers Raceway, Yonkers, New York | 2:00 | |

Trainer Changes

| Race | Horse | Trainer Change |
|--------|--------------------|----------------------------------|
| 4 | ULTIMATE TWIX | Darren R Crowe to Dean L Nixon |
| Race 5 | DRAGON TERROR | Raymond T Paver to Natasha K Day |
| Race 9 | SOUTHBEACH HANOVER | David C Drew to Shawn F Steacy |

GRAND RIVER RACEWAY

By Ken Middleton, Jr. – Monday, August 21

Most Probable Winner:

Race 4 - #2 Sweeter Than Lou

Longshot Special

Race 5 - #5 Dragon Terror

Race 5 Selections 6-7-9-2

6 STORYBOOK BELLA was a down the road winner in her latest for trainer Fellows, who will be looking for a round trip to victory lane. She gets the nod again.

7 GLENBORO kicked home in :28.2 following a nice trip and she managed to grab the deuce. Big threat.

9 STEEL BEAUTY has put together a solid record this year and I can see her adding to it in this spot.

Race 1 Selections 5-3-4-2

5 CHAUD HOLLIDAY has put up solid numbers to this point in her career, and I can see her adding to her totals tonight for Team Holliday. Top call again.

3 THE BLONDY has only missed the board once in her career. She merits major respect in this spot.

4 YELL IT appears to be getting her act together for trainer Jones. I'll use her on the Trifecta ticket tonight.

Race 6 Selections 4-1-2-3

4 MUSCLE CHARM lacked staying power last week in her debut for trainer Cameron. She returns to the half-miler and the shorter stretch might help her.

1 CARIBEAN SKY clearly has speed and skill to offer when she minds her manners. Exacta factor tonight.

2 GRACEFUL CHINA has picked up shares in her last three tries in the Prospect Series. Contender.

Race 2 Selections 1-3-2-6

1 MOLLYS GAME has shown improvement in her last two assignments for trainer Steacy, who gets the rail to work from tonight. She gets the nod in this spot.

3 BLACK TO REALITY overcame interference last time and wound up a fast-closing third. Contender.

2 PINK GEE stepped up her speed in her latest prep. She gets a great post to work from. Top three threat.

Race 7 Selections 2-1-6-5

2 FASHION FORWARD made a costly miscue in last week's quest for the hat trick. The filly gets a great post to work from tonight. She gets the nod in here.

1 SWEET MOLLY turned a two-hole trip into a 1:58.3 triumph in her latest. She can double up in this spot.

6 JEMENAR lacked staying power last time, but she was quite solid in a number of her previous outings.

Race 3 Selections 1-5-7-3

1 MISS DEW WRITE has manufactured some solid numbers this season for trainer Nadeau, who gets the coveted rail post to work from tonight. Major danger.

5 WATCH MY HONEYDRIP has nabbed small shares in her last two attempts. She's an Exacta factor here.

7 PREMIER DELIGHT kicked home in :28.4 last time to rally for a third-place finish. Top three threat again.

Race 8 Selections 2-4-1-6

2 BOLT POWER drops in class and gets a solid post to work from for trainer Enberg. The gelding has the speed and the skill needed to handle this group.

4 PARTYINTHESHADOWS had a rough trip last time but still came away with the win. He can double up.

1 SPORTS SECTION has picked up cheques in his last three local assignments. He's a top three threat.

Race 4 Selections 2-1-3-7

2 SWEETER THAN LOU turned a two-hole trip into a 1:59 triumph in her most recent performance for trainer Steacy. The inside post adds to her appeal.

1 WELL ASSESSED broke her maiden at first asking, and I can see her doubling up in here. Exacta factor.

3 NO PLACE TO HIDE is a logical horse to use on the bottom of the ticket based on her resume to date.

Race 9 Selections 7-6-3-1

7 SOUTHBEACH HANOVER returns from the bench for trainer Steacy, who had to be pleased with his recent qualifier. He gets a slight edge in this spot.

6 LAST BEACH has hit the board in half of his starts this year, but his win % is quite low. Exacta factor.

3 BETTOR B GOING tries his luck on the half-miler after an unproductive effort in his latest. Contender.

Betting Basics

Some essentials to get you started with making a wager.

1 How to wager



Place your bet by visiting a teller, or using a self-serve terminal.

To place a bet here are just 5 things you need to know:

- 1 Name of racetrack (choose from any track in the simulcast feeds)
- 2 Number of the race
- 3 Amount of your bet (e.g. \$2)
- 4 Type of bet (see step 2)
- 5 Horse's number (see step 4)

Once you have decided what you want to bet, head to the nearest seller's window and use the sample statement as your guide:

Hello, (Racetrack), race 6, \$2 to WIN on Horse #4

How to use a self-serve terminal:

- 1 Swipe your Cash Card/Insert Cash
- 2 Enter the initial PIN #1234 (then choose a new PIN)
- 3 Press/Tap the track you would like to bet: (defaults to current race)
- 4 Tap the Horse Number: **#4**
- 5 Press/Tap the Bet Type: **WIN**
- 6 Press/Tap the Bet Amount: **\$2**
- 7 Press/Tap the Race Number: **Race #6**
- 8 Press Green **"Make BET"** button
- 9 Press/Tap the **"Finish with Receipt"** button
- 10 Be sure to check your ticket to confirm it's the bet you wanted

To get a Cash Card or for assistance ask a teller, or a staff member.

2 Types of bets



Single horse bets (minimum \$2.00 bet is required)

| Bet type | Level of difficulty | Explanation and expectation |
|----------|---------------------|---|
| Win | U U U | Your horse must finish 1st; payoff determined by the win odds. |
| Place | U U | Your horse must finish 1st or 2nd; payoffs better than to show. |
| Show | U | Your horse must finish 1st, 2nd, or 3rd; modest payoffs. |

Exotic multiple-horse bets

| Bet type | Level of difficulty | Explanation and expectation |
|-------------------------------|---------------------|---|
| Exacta* | U U U U | Your horses must finish 1st and 2nd in exact order; riskier bet that can pay a little or a lot, depending on the horses' odds. |
| Daily double | U U U U U | Pick the winners of two designated consecutive races. |
| Pick 3, Win 4, Pick 5, Pick 6 | U U U U U U | Select the winners of a designated set of consecutive races. The wager must be made prior to the start of the first race in the multi-race wager. |
| Triactor* | U U U U U U U | Your horses must finish 1st, 2nd, and 3rd in exact order; can be expensive to play if you use a lot of horses. |
| Superfecta* | U U U U U U U U | Your horses must finish 1st, 2nd, 3rd, and 4th; big payoff possible. |

* Exotic bets require the horses to finish in the EXACT order you select, unless you "BOX" the bet, in which case your selections can finish in any order.

For more information visit ONTARIORACING.com

Grand River Raceway Race Night Schedule

June - September | Monday/Wednesday/Friday | Post Time: 6:30 pm



2023

| JUNE | | | | | | |
|------|----|----|----|----|----|----|
| S | M | T | W | T | F | S |
| | | | | 1 | 2 | 3 |
| 4 | 5 | 6 | 7 | 8 | 9 | 10 |
| 11 | 12 | 13 | 14 | 15 | 16 | 17 |
| 18 | 19 | 20 | 21 | 22 | 23 | 24 |
| 25 | 26 | 27 | 28 | 29 | 30 | |

| JULY | | | | | | |
|------|----|----|----|----|----|----|
| S | M | T | W | T | F | S |
| | | | | | | 1 |
| 2 | 3 | 4 | 5 | 6 | 7 | 8 |
| 9 | 10 | 11 | 12 | 13 | 14 | 15 |
| 16 | 17 | 18 | 19 | 20 | 21 | 22 |
| 23 | 24 | 25 | 26 | 27 | 28 | 29 |
| 30 | 31 | | | | | |

| AUGUST | | | | | | |
|--------|----|----|----|----|----|----|
| S | M | T | W | T | F | S |
| | | 1 | 2 | 3 | 4 | 5 |
| 6 | 7 | 8 | 9 | 10 | 11 | 12 |
| 13 | 14 | 15 | 16 | 17 | 18 | 19 |
| 20 | 21 | 22 | 23 | 24 | 25 | 26 |
| 27 | 28 | 29 | 30 | 31 | | |

| SEPTEMBER | | | | | | |
|-----------|----|----|----|----|----|----|
| S | M | T | W | T | F | S |
| | | | | | 1 | 2 |
| 3 | 4 | 5 | 6 | 7 | 8 | 9 |
| 10 | 11 | 12 | 13 | 14 | 15 | 16 |
| 17 | 18 | 19 | 20 | 21 | 22 | 23 |
| 24 | 25 | 26 | 27 | 28 | 29 | 30 |

*Monday, August 7 - Industry Day; Post time: 12:30pm

7445 Wellington County Road 21, Elora, ON N0B1S0
grandriverraceway.com • 519-846-5455 ext. 221

1

TROT
1 Mile
 Grand River Raceway
 21-AUG-23

PROSPECT SERIES
 PURSE: \$8,500. PROSPECT SERIES : 2 YEAR OLD FILLY TROT.
 LEG 4A. (STARTING FEE \$100 CDN).

DAILY DOUBLE (Races 1 & 2)
EXACTA, \$0.20 TRIFECTA
\$0.20 SUPERFECTA
\$0.20 PICK 5 (GTD \$5000)
 PROBABLE FAVOURITES: 5-1-3-2

WARM-UP PAD

| 1 | | 3-1 | | Bruce Richardson A Green-Yellow (149-22-18-24 .268) | | Tr. John Holding (66-4-9-9 .181) | | 2023 | | 2:04 ^F GeoD ft | | 1 1 0 0 | | 100% | | \$4,250 | |
|-----------------------|--|---|--|---|--|---|--|-------------------------------------|--|---------------------------|--|-------------------------|--|----------------|--|-----------------|--|
| SANDOON | | B f 2, Lookslikeeachpndale-Striking Ivy-Striking Sahbra | | John Holding, Kitchener-Morley Bosomworth, Elora, ON | | John Holding, Kitchener-Morley Bosomworth, Elora, ON | | 2022 | | 2:04 ^F GeoD | | 2yo | | 1 wins | | \$4,250 | |
| Red Ag13 ³ | | aGeoD 23 ft Prospect | | 8500 m :30 ² 1:01 ⁴ 1:33 ² 2:04 ² | | o5 ⁴ 433 ⁴ 121 ⁴ 2:04 ² 30 ⁴ 31 ³ 31 ⁴ 30 ¹ | | Breeder: Bloomingwood Farms Ltd, ON | | BcRchdsn JHolding | | 8 ⁹⁰ Sandoon | | ClevelandJUBet | | GracefulChina 5 | |
| Ag2 ³ | | aGRvr 23 ft qua | | m :32 1:02 ⁴ 1:34 ¹ 2:05 | | 2 ² 25 ³ / ₄ 24 ¹ / ₂ 23 ¹ / ₂ 21 ¹ / ₄ 2:05 ¹ 32 ² 31 ³ 31 | | | | BcRchdsn JHolding | | NB HadMeAWhiskey | | Sandoon | | SuzyValentine | |
| Jy14 ³ | | aWbsb 20 ft qua | | m :31 ¹ 1:01 ¹ 1:30 ² 1:59 ⁴ | | 5 56 ¹ / ₂ 51 ⁰ 61 ⁶ 7 ^{dis} 7 ^{dis} 32 ² 30 ⁴ 30 ² | | | | DMcNair GMcNair | | NB CoolMaBelle | | KickinYourMass | | Evolving | |
| Jn15 ³ | | aWbsb 15 ft 2yr-f-qua | | m :31 ¹ 1:01 ² 1:30 ⁴ 2:00 ⁴ | | 6 x7 ²¹ 72 ⁶ 7 ^{dis} 7 ^{dis} 35 ² 31 ¹ | | | | DMcNair GMcNair | | NB PrincessArl | | TacticalPrncss | | NoOn | |
| Jn9 ³ | | rWbsb 12 sy ⁴ 2yr-f-qua | | m :33 ⁴ 1:07 ⁴ 1:40 ³ 2:10 ² | | 5 69 ¹ / ₄ 6 ⁹ 69 ¹ / ₂ 51 ⁰ 51 ³ 2:13 35 ³ 34 32 ⁴ 30 ³ | | | | TrHenry GMcNair | | NB LandingOrdr | | TequilaSunst | | DollarMakr | |

| 2 | | 6-1 | | Stephen Byron 190 A Green-White-Yellow (240-15-28-23 .159) | | Tr. Gino Cicero (43-3-2-7 .149) | | 2023 | | 4 0 0 0 | | 0% | | \$00 | | | |
|-----------------------|--|--|--|---|--|---|--|----------------------------|--|------------------|--|----------------------------------|--|--------------|--|----------------|--|
| HOPE N GLORY | | B f 2, Lookslikeeachpndale-Merry Maiden-Angus Hall | | Gino Cicero, Melancthon, ON | | Gino Cicero, Melancthon, ON | | 2022 | | 0 0 0 0 | | 0% | | \$00 | | | |
| Blue Ag7 ³ | | aWbsb 22 ft OnSS-rs | | 22600 m :28 ² :59 ³ 1:29 ² 1:59 | | o86 ¹ / ₄ 77 ¹ / ₄ 710 ³ / ₄ 2:01 ¹ 30 ² 30 ² 29 ⁴ 30 ¹ | | Breeder: Norah E Parks, ON | | SBYron GCicero | | 66 ⁸⁵ KinnderHotblood | | Abikadabra | | TeaLake 9 | |
| Jy31 ³ | | rWbsb 19 ft OnSS-rs | | 23000 m :29 1:00 ³ 1:30 ¹ 1:59 ¹ | | 10 917 ¹ / ₄ 911 ¹ / ₂ o81 ⁰ 710 ¹ / ₂ 711 ³ / ₄ 2:01 ¹ 32 ² 30 ² 29 ² 29 ² | | | | SBYron GCicero | | 52 ¹⁰ SueAnne | | TeaLake | | GamingQueen 10 | |
| Jy17 ³ | | aWbsb 25 ft OnSS-rs | | 22200 m :28 ¹ :58 ⁴ 1:29 ² 1:57 ³ | | 3 615 ¹ / ₂ 68 ¹ / ₂ 6 ⁸ 68 ¹ / ₄ 613 ³ / ₄ 2:00 ² 31 ¹ 29 ¹ 30 ² 29 ² | | | | JJamiesn GCicero | | 41 ⁷⁵ AllOutMarln | | RhythmOILf | | WestRiverlvr 8 | |
| Jy9 ³ | | aGeoD 22 ft nw1r5000lcd | | 7000 m :29 ¹ :59 ⁴ 1:30 ² 2:00 ³ | | 1 x7 ¹⁰ 8 ^{dis} 8 ^{dis} 8 ^{dis} 31 ¹ | | | | SBYron GCicero | | 28 ⁹⁵ MncrdBlMvp | | Nlrthmchnclr | | AmbrOrmnt 8 | |
| Jy1 ³ | | aGeoD 27 ft qua-t&p | | m :29 ¹ :58 ³ 1:29 ⁴ 2:00 ¹ | | 2 48 ¹ / ₂ 49 ³ / ₄ 4 ⁸ 51 ¹ 514 ³ / ₄ 2:03 ¹ 30 ⁴ 29 ⁴ 30 ⁴ 31 ⁴ | | | | SBYron GCicero | | NB KieraSeelstr | | ClaresScampr | | TtConwa | |

| 3 | | 4-1 | | Travis Henry 170 A Light Blue-White (1120-182-165-166 .293) | | Tr. Jean-Francois Maguire (86-18-8-14 .315) | | 2023 | | 2:05 ^H Clint | | gd 4 1 1 1 | | 25% | | \$7,645 | |
|-------------------------|--|--|--|---|--|--|--|--------------------------|--|-------------------------|--|-------------------------------|--|---------------|--|----------------|--|
| THE BLONDY † | | B f 2, Muscle Mass-Tymal Tempest-Deweycheatumnhowe | | Ecuries Maguire Inc, Sainte-Marie, QC-Jean-Francois Maguire, Acton, ON | | Ecuries Maguire Inc, Sainte-Marie, QC-Jean-Francois Maguire, Acton, ON | | 2022 | | 0 0 0 0 | | 0 | | 0% | | \$00 | |
| White Ag13 ³ | | aGeoD 23 ft † Prospect | | 8500 m :30 ³ 1:02 ² 1:32 2:02 | | 4x 515 512 ¹ / ₄ 410 ³ / ₄ 410 411 ¹ / ₂ 52:04 ¹ 33 ³ 31 ¹ 29 ² 30 | | Breeder: Tymal Farms, ON | | JRyan JMaguire | | 2 ⁹⁰ RadicalLegacy | | ChaudHolliday | | Yelltt 5 | |
| Ag6 ³ | | iClnt 22 gd ¹ † Prospect | | 8700 m :31 ³ 1:04 ² 1:36 ² 2:05 ⁴ | | 1 11 ³ / ₄ 12 ¹ / ₂ 11 ³ / ₄ 12 1 ³ / ₄ 2:05 ⁴ 31 ³ 32 ⁴ 32 29 ² | | | | TraHenry JMaguire | | 5 ⁴⁰ TheBlondy | | ChaudHolliday | | MuscleCharm 7 | |
| Jy25 ³ | | aGeoD 22 ft † Prospect | | 8600 m :31 ¹ 1:03 ³ 1:34 ³ 2:04 ¹ | | 6 45 44 ¹ / ₂ 44 ¹ / ₂ 33 ¹ / ₄ 223 ⁴ 2:04 ⁴ 32 ¹ 32 ¹ 31 29 ² | | | | CKelly JMaguire | | 2 ⁷⁵ ChaudHollida | | TheBlond | | GracefulChin 6 | |
| Jy19 ³ | | iGRvr 23 ft 2yr-nw1r1ft | | 6000 m :29 ² 1:03 ³ 1:30 ¹ 2:03 ¹ | | 1 57 58 ¹ / ₂ o44 ¹ / ₄ 34 ¹ / ₂ 35 ¹ / ₄ 2:04 ³ 32 32 ² 30 ¹ 30 | | | | SYong JMaguire | | 2 ¹⁵ AllyBaba | | DollarMaker | | TheBlondy 6 | |
| Jy11 ³ | | aWbsb 24 ft 2yr-f-qua | | m :32 ¹ 1:02 ³ 1:30 ² 2:03 ¹ | | 6 44 ³ / ₄ 3 ⁸ 33 ³ / ₄ 32 ⁴ / ₄ 43 2:03 ⁴ 33 ¹ 31 30 29 ³ | | | | LRoy JMaguire | | NB Abikadabra | | RhythmOILf | | Caribeansky | |
| Jy4 ³ | | rWbsb 25 ft 2yr-qua | | m :31 1:01 1:30 ³ 1:59 | | 4 61 ⁰ 61 ² 61 ² 61 ⁸ 62 ⁶ 2:04 ¹ 33 30 ² 29 ³ 31 ¹ | | | | LRoy JMaguire | | NB HitTheBank | | NoOne | | WomanOfPassion | |

| 4 | | 8-1 | | Keith Jones 195 A Black-White (27-0-2-2 .065) | | Tr. Keith Jones (115-7-12-13 .156) | | 2023 | | 2 0 0 1 | | 0% | | \$1,020 | | | |
|-------------------------|--|---|--|---|--|---|--|--------------------------|--|-----------------|--|-------------------------------|--|----------------|--|-----------------|--|
| YELL IT † | | B f 2, Archangel-Dont Tell My Girl-Mutineer | | Douglas McCarthy, Holland Landing, ON | | Douglas McCarthy, Holland Landing, ON | | 2022 | | 0 0 0 0 | | 0 | | \$1,020 | | | |
| Green Ag13 ³ | | aGeoD 23 ft † Prospect | | 8500 m :30 ³ 1:02 ² 1:32 2:02 | | 3 2 ¹ / ₂ 21 ³ / ₄ o21 ² 35 ¹ / ₂ 37 ³ / ₄ 2:03 ³ 30 ³ 32 ¹ 29 ¹ 31 ³ | | Breeder: Winbak Farm, MD | | TBorth KJones | | 8 ⁶⁰ RadicalLegacy | | ChaudHolliday | | Yelltt 5 | |
| Ag4 ³ | | aWbsb 22 gd ¹ † 2yr-qua | | 8700 m :31 ³ 1:03 ² 1:34 2:03 ¹ | | 2 89 ¹ / ₂ o4 ⁵ o21 3 ² 4 ³ 2:03 ⁴ 33 ² 31 29 ⁴ 29 ³ | | | | BMcClure KJones | | NB MyfriendJose | | Griff | | TymalSpellbound | |
| Jy31 ³ | | aWbsb 21 ft 2yr-f-qua | | m :31 ² 1:01 1:31 2:01 ¹ | | 7x x82 ² 8 ^{dis} 8 ^{dis} 8 ^{dis} 8 ^{dis} 35 ⁴ | | | | BMcClure KJones | | NB DrawnImprsn | | KissMZtt | | BillieJeanOn | |
| Jy21 ³ | | aKD 24 ft qua | | m :31 1:03 1:34 2:05 | | 3x 421 425 328 330 328 ¹ / ₄ 2:10 ³ 35 ¹ 32 ⁴ 31 ³ 31 | | | | BRae KJones | | NB DusktodawnHnvr | | CarwinsLuckLn | | Ylltt | |
| Jy5 ³ | | iGRvr 27 ft nw1r5000lcd | | 6200 m :29 ² 1:00 ³ 1:30 ¹ 2:00 ¹ | | 2x 9 ^{dis} 9 ^{dis} 9 ^{dis} 9 ^{dis} 9 ^{dis} 33 ² 31 ⁴ 31 ² | | | | TBorth KJones | | 31 ⁵⁰ PrinceArch | | EnjoyTrttnng | | ItsSallyDI 9 | |
| Jn23 ³ | | aWbsb 23 ft † 2yr-f-qua | | m :28 ⁴ 1:01 ² 1:31 ⁴ 2:00 ³ | | 5x x62 ³ 61 ⁹ 62 ⁴ 6 ^{dis} 6 ^{dis} 33 ² 31 ⁴ 30 ¹ 32 | | | | TBorth KJones | | NB KarensDream | | QueenCabal | | GoHaveFun | |
| Jn15 ³ | | aWbsb 15 ft 2yr-f-qua | | m :31 ¹ 1:01 ² 1:30 ⁴ 2:00 ⁴ | | 7 33 ¹ / ₄ 38 ¹ / ₂ 31 ² 61 ³ 62 ² 2:05 ¹ 31 ⁴ 31 ¹ 30 ¹ 32 | | | | TBorth KJones | | NB PrincessArl | | TacticalPrncss | | NoOn | |
| Jn9 ³ | | rWbsb 12 sy ⁴ 2yr-f-qua | | m :33 ⁴ 1:07 ⁴ 1:40 ³ 2:10 ² | | 6 3 ⁴ 3 ⁴ 33 ³ / ₄ x6 ¹⁰ 6 ^{dis} 34 ³ 34 32 ⁴ | | | | TBorth KJones | | NB LandingOrdr | | TequilaSunst | | DollarMakr | |

| 5 | | 5-2 | | Ryan Holliday 145 A Brown-Gold (45-5-12-8 .318) | | Tr. Dave Holliday (64-10-11-11 .309) | | 2023 | | 2:04 ^F GeoD ft | | 4 1 2 0 | | 25% | | \$8,600 | |
|-------------------------|--|--|--|---|--|--|--|--------------------------------|--|---------------------------|--|------------------------------|--|---------------|--|----------------|--|
| CHAUD HOLLIDAY † | | B f 2, Lookslikeeachpndale-Chaleur Hanover-Cantab Hall | | Caroline Holliday, Mount Forest-Dr Paul Rutherford, Listowel, ON | | Caroline Holliday, Mount Forest-Dr Paul Rutherford, Listowel, ON | | 2022 | | 0 0 0 0 | | 0 | | 0% | | \$00 | |
| Black Ag13 ³ | | aGeoD 23 ft † Prospect | | 8500 m :30 ³ 1:02 ² 1:32 2:02 | | 2 o1 ¹ / ₂ 11 ³ / ₄ 1 ¹ / ₂ x1 ^{nk} 26 ¹ / ₄ 2:03 ¹ 30 ³ 31 ⁴ 29 ³ 31 ³ | | Breeder: Caroline Holliday, ON | | RHolliday DHolliday | | *50 RadicalLegacy | | ChaudHolliday | | Yelltt 5 | |
| Ag6 ³ | | iClnt 22 gd ¹ † Prospect | | 8700 m :31 ³ 1:04 ² 1:36 ² 2:05 ⁴ | | 3 33 ¹ / ₄ 34 ¹ / ₄ o21 ³ / ₄ 22 2 ³ / ₄ 2:06 32 ¹ 33 31 ³ 29 ¹ | | | | RHolliday DHolliday | | 2 ⁸⁰ TheBlondy | | ChaudHolliday | | MuscleCharm 7 | |
| Jy25 ³ | | aGeoD 22 ft † Prospect | | 8600 m :31 ¹ 1:03 ³ 1:34 ³ 2:04 ¹ | | 3 21 ¹ / ₂ 21 ¹ / ₂ 21 ¹ / ₂ 2 ³ / ₄ 12 ³ / ₄ 2:04 ¹ 31 ² 32 ² 31 29 ² | | | | RHolliday DHolliday | | *115 ChaudHollida | | TheBlond | | GracefulChin 6 | |
| Jy17 ³ | | aWbsb 25 ft OnSS-rs | | 22200 m :28 ¹ :58 ⁴ 1:29 ² 1:57 ³ | | 5x 81 ⁸ 81 ⁴ 71 ⁰ 711 ¹ / ₂ 716 ³ / ₄ 2:01 31 ⁴ 29 ⁴ 29 ⁴ 29 ³ | | | | RHolliday DHolliday | | 19 ⁹⁵ AllOutMarln | | RhythmOILf | | WestRiverlvr 8 | |
| Jy7 ³ | | aWbsb 22 ft 2yr-f-qua | | m :31 1:00 ³ 1:30 ¹ 2:01 ² | | 4 4 ⁵ 4 ⁸ 48 ¹ / ₂ 4 ⁹ 36 ¹ / ₂ 2:02 ³ 32 30 ¹ 29 ³ 30 ⁴ | | | | RHolliday DHolliday | | NB SummrCrsh | | TequilaSnst | | ChaudHollid | |
| Jy1 ³ | | aHnvr 29 ft qua | | m :32 1:03 ⁴ 1:35 2:05 ² | | 5 37 ¹ / ₄ 37 ³ / ₄ o3 ⁹ 26 ¹ / ₂ 25 ¹ / ₄ 2:06 ² 33 ² 32 31 ² 29 ³ | | | | RHolliday DHolliday | | NB YetiSetG | | ChaudHollida | | HadMeAWhiske | |

2

PACE
1 Mile
 Grand River Raceway
 21-AUG-23

PURSE: \$6,000. 2 YEAR OLD FILLIES: NW 1 RACE LIFETIME.

EXACTA
\$0.20 TRIFECTA
\$0.20 SUPERFECTA
\$0.20 PICK 4 (GTD \$2500)
PROBABLE FAVOURITES: 1-3-6-7

WARM-UP PAD

| | | | | | | | | | | |
|----------|--|---|---|------|---|---|---|---|------|---------|
| 1 | 2-1 | J Bradley Harris 155 A Wh-Gm-Blk (851-150-140-117 .313) | Tr. Shawn Steacy (326-54-46-43 .288) | 2023 | 3 | 0 | 1 | 1 | 0% | \$2,556 |
| | MOLLYS GAME | Mickey Sudar,Hagersville-Dewitt Stables,Port Perry,ON | Life | 2022 | 0 | 0 | 0 | 0 | \$00 | |
| | Red B f 2, Bettors Delight-Case Dismissed-Western Terror Ag14 ³ 6GRvr 21 ft 2yf-nw1rft 6000 m :28 ¹ :59 1:28 ⁴ 1:59 2 36 ¹ / ₄ i37 2 ¹ / ₄ 2 ¹ / ₄ 2 ¹ / ₄ 1:59 ¹ 29 ² 31 28 ⁴ 30 Ag6 ³ 6GeoD 20 ft Prospect 8800 m :27 ² :57 ³ 1:27 ² 1:58 ¹ 7 5 ⁵ / ₂ 5 ⁶ o4 ³ 4 ³ 3 ¹ 1:58 ² 28 ² 30 ² 29 ¹ 30 ² Jy22 ³ 10Sar 25 ft OnSS-rs 21800 m :28 ¹ :58 1:26 ² 1:55 ⁴ 3 4 ⁴ 5 ⁴ / ₄ 6 ¹² 6 ¹⁹ / ₄ 6 ²⁰ / ₄ 2:00 29 30 29 ⁴ 31 ¹ Jy11 ³ 6Wbsb 24 ft qua m :29 ¹ :59 ³ 1:28 ⁴ 1:57 ² 6 3 ³ / ₂ 3 ³ 3 ³ 3 ² / ₄ 3 ³ / ₄ 1:58 ¹ 29 ⁴ 30 ² 29 ¹ 28 ⁴ Jy4 ³ 10Wbsb 25 ft 2yr-qua m :31 1:00 ⁴ 1:29 ⁴ 1:57 ⁴ 8 8 ¹² / ₂ 8 ¹³ 8 ¹² / ₂ 8 ¹³ 8 ¹⁴ 2:00 ³ 33 ² 30 28 ⁴ 28 ² | JB.Harris SStacey 160 DrinksInthsnd MollysGm BlackToRealt 6 JDruvy SStacey 890 RocksShadow McPaisley MollysGame 8 MStacey SStacey 223 ⁵ BonitasBestBt SportyLz WinnerBlts 6 NB Pam HopesWthEmi ElodiHnvr AllieGm 6 SStacey NB PastaDelght DefiningtheMomnt MaDiv | | | | | | | | |

| | | | | | | | | | | |
|----------|---|---|--------------------------------------|------|---|---|---|---|------|------|
| 2 | 6-1 | Daryl Thiessen 171 A (458-52-65-51 .229) | Tr. Chris Hill (5-1-0-0 .200) | 2023 | 0 | 0 | 0 | 0 | 0% | \$00 |
| | PINK GEE | Chris Hill,Hagersville,ON | Life | 2022 | 0 | 0 | 0 | 0 | \$00 | |
| | Blue B f 2, All Bets Off-Jasper Avenue-Village Jasper Ag9 ³ 2GRvr 26 ft 2yr-qua m :29 ² :59 ¹ 1:29 ¹ 1:59 ¹ 1 3 ⁶ 3 ⁷ / ₄ 3 ⁴ / ₄ 2 ⁴ 2 ⁴ / ₄ 2:00 30 ³ 30 ¹ 29 ² 29 ⁴ Jy19 ³ 5GRvr 23 gd ¹ qua m :30 ⁴ 1:01 ⁴ 1:32 ¹ 2:02 ¹ 3 6 ¹² / ₂ 6 ¹⁵ 6 ¹⁸ 6 ²¹ 6 ²⁵ 2:07 ¹ 33 ¹ 31 ³ 31 31 ² | DThiessenCHill NB GladiatorSBg PinkGee CountryMouse DThiessenCHill NB DiamondGrI Alsmokeandmirrs IntoG | | | | | | | | |

| | | | | | | | | | | |
|----------|--|---|--|------|---|---|---|---|------|---------|
| 3 | 5-2 | Brett Macdonald 135 A Brngdy-Wh-Blk (1290-177-179-185 .262) | Tr. Richard Moreau (993-170-167-141 .311) | 2023 | 6 | 0 | 2 | 1 | 0% | \$4,020 |
| | BLACK TO REALITY | Norah Parks,New Lowell-James Grant,Samia-Jeffrey Seibel,Elmira,ON | Life | 2022 | 0 | 0 | 0 | 0 | \$00 | |
| | White Bk f 2, Shadow Play-Take My Breathaway-Artsplce Ag14 ³ 6GRvr 21 ft 2yf-nw1rft 6000 m :28 ¹ :59 1:28 ⁴ 1:59 6 6 ¹² / ₄ i511 ¹ / ₄ 5 ⁵ / ₂ 4 ² / ₄ 3 ¹ / ₂ 1:59 ¹ 30 ⁴ 30 ² 28 ³ 29 ² Jy31 ³ 6GRvr 19 ft 2yf-nw1rft 6000 m :29 ² :59 ⁴ 1:28 ⁴ 1:58 ¹ 7 5 ⁸ o4 ⁵ / ₄ 4 ⁴ / ₄ 4 ⁴ / ₄ 5 ⁵ / ₂ 1:59 ¹ 31 29 ⁴ 28 ⁴ 28 ³ Jy24 ³ 6GRvr 22 ft 2yf-nw1rft 6000 m :28 ⁴ 1:00 1:28 ² 1:57 ³ 4 3 ³ / ₄ 3 ⁴ / ₄ 2 ² 2x1 ¹ / ₂ x2 ³ / ₄ 1:58 ² 29 ² 31 ² 28 28 29 ³ Jy17 ³ 6GRvr 21 ft 2yf-nw1rft 6000 m :30 ¹ 1:00 ³ 1:29 ² 1:58 6 1 ³ / ₄ 1 ³ / ₂ 1 ² / ₂ 1 ¹ / ₄ 2 ¹ / ₂ 1:58 30 ¹ 30 ² 28 ⁴ 28 ³ Jy6 ³ 5Wbsb 23 ft 2yfnw5000lcd 16000 m :28 ³ :57 ² 1:25 ¹ 1:53 ² 8 9 ¹⁷ / ₄ 9 ²² / ₂ 9 ²⁰ 9 ²¹ / ₄ 8 ² / ₂ 1:57 ³ 32 ¹ 29 ³ 27 ² 28 ² Jn29 ³ 4Wbsb 22 ft 2yr-f-cond 16000 m :29 ² :59 ³ 1:28 ¹ 1:55 ⁴ 2 2 ² / ₂ 2 ¹ / ₂ o11 ¹ / ₂ 2 ⁴ 3 ⁴ 7 ⁶ / ₂ 1:57 29 ⁴ 29 ⁴ 29 ² 28 Jn15 ³ 2Wbsb 15 ft 2yr-f-qua m :31 ¹ 1:00 ⁴ 1:29 ¹ 1:57 ³ 5 5 2 ³ / ₄ 2 ¹ / ₄ 3 ³ / ₄ 3 ³ / ₄ 2 ² / ₄ 1:58 ¹ 31 ⁴ 29 ² 28 ² 28 ² Jn9 ³ 2Wbsb 12 sy ³ 2yr-f-qua m :31 ² 1:03 ² 1:33 2:02 ² 4 5 5 ⁸ / ₂ o2 ¹ 1 ² / ₄ 2 ^{nk} 4 ¹ / ₄ 2:02 ³ 33 ³ 30 ³ 29 ² 29 ⁴ | BMacDld RMoreau 3 ¹⁵ DrinksInthsnd MollysGm BlackToRealt 6 BMacDld RMoreau 2 ³⁵ Scrrpp MiklobUltr FulloPersonallt 7 BMacDld RMoreau *1 ⁰⁰ Hottubppnbbbl BlackToRealt AllRc 7 BMacDld RMoreau 4 ¹⁰ SweetMll BlackToRealt McwickedBch 6 CChristof RMoreau 4 ⁷⁸ StayngWthEmi ElodiHnvr CollusinHnvr 9 CChristof KMdltion 10 ⁷⁵ PassngAndStw CenturyKalimb SportyLz 9 SFillion KMdltion NB AfewChoicWrds BlackToRealt Capytrch SFillion KMdltion NB DiamondGrI SweetReport RazzyJazz | | | | | | | | |

| | | | | | | | | | | | | | | |
|----------|--|--|--|------|--------------------|---|------|----|-------|---|---|---|----|---------|
| 4 | 8-1 | Lorne House 159 A Black-Grey-White (453-45-63-60 .220) | Tr. Scott McNiven (179-14-20-33 .201) | 2023 | Q2:04 ² | H | GRvr | ft | 6 | 0 | 0 | 1 | 0% | \$1,200 |
| | QUEEN OF THE DECK | Kimberley McNiven,Putnam-Thomas Brodhurst,London-Bradley McNiven,Embro-Douglas Heywood,Putnam,ON | Life | 2022 | 0 | 0 | 0 | 0 | \$200 | | | | | |
| | Green B f 2, Betterthancheddar-Magic Card-Veeza Ag7 ³ 8Dres 23 ft ¹ OnSS-rs 22200 m :28 :58 ² 1:28 ² 1:58 ³ 7 8 ²⁴ 8 ²³ / ₄ o7 ¹⁹ / ₂ 6 ¹⁵ 6 ¹⁹ / ₄ 2:02 ² 32 ⁴ 30 ¹ 29 ¹ 30 ¹ Jy31 ³ 6GRvr 19 ft 2yf-nw1rft 6000 m :29 ² :59 ⁴ 1:28 ⁴ 1:58 ¹ 4 6 ¹¹ / ₂ o6 ⁸ / ₄ 5 ⁷ / ₄ 5 ⁶ / ₄ 4 ⁵ 1:59 ¹ 31 ³ 30 28 ² 29 Jy22 ³ 2Sar 25 ft OnSS-rs 22200 m :28 :58 ² 1:27 ² 1:55 ⁴ 1 x7 ⁷ / ₂ 7 ¹⁰ / ₃ 7 ⁹ / ₂ 7 ⁸ / ₄ 6 ¹¹ / ₄ 1:58 ¹ 29 ² 31 ¹ 28 ³ 29 Jy15 ³ 10Hnvr 23 sy ³ Prospect 8800 m :31 ² 1:03 ² 1:33 ¹ 2:03 ² [8 4 ⁵ / ₂ o4 ⁷ o3 ^x 8 ¹⁷ Jy3 ³ 6GRvr 23 ft 2yr-f-cond 6000 m :29 ² :59 ³ 1:29 ⁴ 1:58 ⁴ 6 6 ¹⁰ / ₂ 6 ¹² o6 ⁸ / ₄ 5 ⁹ 3 ⁷ / ₂ 2:00 ¹ 31 ² 30 ³ 29 ² 28 ⁴ Jn26 ³ 3GRvr 20 ft f-nw3000l 6000 m :28 ⁴ :58 ³ 1:28 ³ 1:58 ² 4x o8 ¹⁸ / ₄ 9 ¹⁷ 9 ²⁰ / ₂ 8 ²³ 7 ²⁸ 2:04 32 ² 29 ³ 30 ³ 31 ² Jn14 ³ 2GRvr 18 ft qua m :31 ² 1:03 ³ 1:34 2:04 ² 1 2 ³ 2 ³ / ₄ 2 ³ / ₄ 2 ¹ / ₂ 1 ¹ / ₄ 2:04 ² 32 ² 29 ³ 30 ¹ 29 ⁴ Jn9 ³ 2Wbsb 12 sy ³ 2yr-f-qua m :33 ³ 1:05 ¹ 1:36 2:04 ³ 7 2 ² 2x ² x8 ^{dis} 8 ^{dis} 8 ^{dis} 3 ⁴ 3 ¹³ | LHouse SMCNiven25 ⁴⁵ TribIDncr IdyllicDght Shultupnddvr 8 LHouse SMCNiven11 ¹⁵ Scrrpp MiklobUltr FulloPersonallt 7 LHouse SMCNiven 6 ²⁰ ControlTHFr CheesPrt SheComsAndGs 7 LHouse SMCNiven11 ⁸⁰ GreatestPlesr LvOnM AcefortyforLd 8 LHouse SMCNiven28 ⁸⁰ THJackiesLegac TooEas QueenOTTheDck 7 LHouse SMCNiven32 ⁹⁵ FashionFrwr Remissnc BettorsPassy 9 LHouse SMCNiven NB QueenOTTheDeck TalTaTina FazyLike JJamiesn SMCNiven NB PrettyMissM CandescenHnvr CheesPrt | | | | | | | | | | | | |

| | | | | | | | | | | |
|----------|--|---|--|------|---|---|---|---|------|---------|
| 5 | 12-1 | Anthony Haughan 185 A Green-White-Gold (658-103-78-67 .256) | Tr. Blair Burgess (62-9-9-5 .252) | 2023 | 4 | 0 | 0 | 0 | 0% | \$1,147 |
| | SINGLE TO MINGLE | Blair Burgess Stable,Campbellville,ON | Life | 2022 | 0 | 0 | 0 | 0 | \$00 | |
| | Black B f 2, Stag Party-Bunkhouse Play-Shadow Play Ag13 ³ 7Learn 26 ft ¹ Prospect 8600 m :29 1:01 1:33 2:01 ¹ 1 5 ⁴ / ₂ 5 ⁶ 5 ⁴ / ₂ 5 ³ / ₂ 6 ¹⁰ / ₄ 2:03 ¹ 29 ⁴ 32 ² 31 ³ 29 ² Jy31 ³ 2GRvr 19 ft 2yf-nw1rft 6000 m :29 ³ 1:00 ⁴ 1:29 ³ 1:58 4 5 ⁸ / ₄ 5 ⁸ / ₄ 6 ¹⁰ / ₄ 6 ¹⁶ / ₄ 6 ²⁴ / ₄ 2:03 31 ¹ 31 ¹ 29 ¹ 31 ² Jy26 ³ 4GRvr 25 gd ² Prospect 8900 m :30 ¹ 1:01 1:31 2:00 ¹ 1 3 ³ 3 ⁶ / ₂ 4 ⁸ / ₂ 4 ⁹ 4 ¹² / ₄ 2:02 ⁴ 30 ⁴ 31 ² 30 ³ 30 ¹ Jy15 ³ 7Hnvr 23 ft Prospect 8700 m :30 ¹ 1:03 1:34 2:03 ⁴ 7ix 7 ¹¹ 7 ⁸ 6 ⁸ / ₂ 6 ⁸ 6 ¹¹ / ₅ 2:06 32 ² 32 ¹ 30 ³ 30 ⁴ Jy4 ³ 13Wbsb 25 ft 2yr-qua m :30 ⁴ 1:00 ¹ 1:29 1:56 ² 7 3 ³ 3 ³ / ₄ 5 ⁴ / ₂ 5 ⁹ 6 ²⁰ 2:00 ² 31 ² 29 ² 29 30 ³ Jn23 ³ 12Wbsb 23 ft 2yr-f-qua m :29 ³ :59 ⁴ 1:29 ² 1:56 ¹ 3 6 ⁷ / ₄ 6 ⁹ / ₂ 6 ⁸ / ₂ 6 ¹³ 6 ²² 2:00 ³ 31 ¹ 30 ² 29 ³ 29 ³ | NSteward BBrgess 10 ⁴⁰ McPaisle DiamondGrI Cheddarisbett 6 BBurgess BBrgess 39 ⁸⁰ MikisDchss DACinnamncrnch Myblctn 6 TBorth BBrgess 37 ⁵⁵ HalvahHanover LyonsShineOn McPaisley 8 TBorth BBrgess 5 ⁸⁵ SpeakOFJ CzechWithVivn TinyBuMght 7 BBurgess BBrgess NB PremHrss Hottbppnbbbl Chdrsbtt 8 BBurgess BBrgess NB CocoJoJo SwiftTalker SuntanCity | | | | | | | | |

| | | | | | | | | | | |
|----------|---|--|--|------|---|---|---|---|------|---------|
| 6 | 3-1 | Scott Coulter 163 A Tan-Black-White (698-84-90-104 .241) | Tr. Shayne Barrington (215-42-22-30 .298) | 2023 | 4 | 0 | 0 | 1 | 0% | \$1,500 |
| | MATERNAL INSTINCT | Aaron Waxman,Carlisle,ON-David Jarvis,Bloomfield Hills,MI | Life | 2022 | 0 | 0 | 0 | 0 | \$00 | |
| | Yellow B f 2, Mcwicked-Granny Hanover-Captaintreacheros Ag14 ³ 6GRvr 21 ft 2yf-nw1rft 6000 m :29 ³ :58 ³ 1:28 ³ 1:59 3 3 ³ / ₄ 3 ⁷ / ₄ 3 ⁸ / ₂ 3 ⁷ / ₂ 3 ⁸ 2:00 ³ 30 ² 29 ² 30 ⁴ 30 ⁴ Ag7 ³ 6GRvr 22 ft 2yf-nw1rft 6000 m :27 ⁴ :58 ¹ 1:29 1:58 ³ 4 5 ¹³ / ₄ 6 ¹⁴ 6 ⁸ 6 ⁹ 5 ¹⁰ / ₄ 2:00 ⁴ 30 ² 30 ³ 29 ³ 30 ¹ Jy31 ³ 2GRvr 19 ft 2yf-nw1rft 6000 m :29 ³ 1:00 ⁴ 1:29 ³ 1:58 6 2 ² 2 ² 4 ⁴ / ₄ 4 ⁷ 4 ¹¹ 2:01 30 31 ¹ 29 ² 29 ³ Jy25 ³ 4Wbsb 25 ft 2f-nw5000lcd 16000 m :28 ² :58 1:26 ³ 1:53 ³ 7 8 ¹¹ / ₂ 8 ¹⁴ 8 ¹¹ / ₂ 8 ¹⁸ / ₄ 8 ²³ / ₂ 1:58 ¹ 30 ³ 30 ¹ 28 29 ² Jy14 ³ 3Wbsb 20 ft 2yr-f-qua m :30 ¹ :59 ¹ 1:27 ⁴ 1:55 ¹ 7 5 ⁷ / ₂ 5 ⁹ / ₂ 5 ¹² 4 ¹⁶ 4 ²¹ 1:59 ² 31 ³ 29 ² 29 ¹ 29 ¹ Jy2 ³ 1Chr 24 ft 2yr-f-qua m :31 ¹ 1:03 ¹ 1:34 ¹ 2:04 ¹ 5 5 ¹⁰ / ₂ o5 ⁶ / ₄ o5 ⁴ / ₄ 4 ³ 4 ² 2:04 ³ 33 ¹ 31 ² 30 ² 29 ³ | BMacDld SBarringt 5 ⁷⁰ SweetrThnL StOfAffrs MtrlnInstinct 6 BMacDld SBarringt 28 ⁵⁰ DACinnmncrnch MiklobUltr DrnksInthsnd 7 SCoulter SBarringt 40 ¹⁵ MikisDchss DACinnmncrnch Myblctn 6 SBarringt 31 ²⁵ WickedWthr PastDght DefiningthMmnt 8 TBorth SBarringt NB ReigningJad KissMyChek MiklobUltr BMacPhe TWthrbie NB StarshpBt ZendaysFrstd WoodmerLz | | | | | | | | |

| | | | | | | | | | | |
|----------|---|---|--|------|---|---|---|---|------|-------|
| 7 | 4-1 | Travis Henry 170 A Light Blue-White (1120-182-165-166 .293) | Tr. Rene Bourassa (12-3-1-2 .351) | 2023 | 2 | 0 | 0 | 1 | 0% | \$984 |
| | BETTER DRIVE | Gilles Caouette,Sudbury,ON-Les Ecuries Marc Gelinas,Shawinigan,QC-Rene Bourassa,Fergus,ON | Life | 2022 | 0 | 0 | 0 | 0 | \$00 | |
| | Pink B f 2, All Bets Off-Ocean Drive-Captaintreacheros Ag14 ³ 4GRvr 21 ft 2yf-nw1rft 6000 m :29 ³ :58 ³ 1:28 ³ 1:59 6 6 ¹³ / ₄ 6 ¹⁶ o5 ¹³ / ₂ 5 ¹² / ₄ 4 ⁹ / ₄ 2:00 ⁴ 32 ² 29 ² 29 ³ 29 ³ Ag5 ³ 4Hnvr 20 ft nw1500lcd 4200 m :29 ³ 1:00 ³ 1:29 ² 2:00 ³ 7 4 ⁵ / ₂ 4 ⁹ / ₄ o4 ⁷ / ₄ 3 ⁷ 3 ⁵ / ₄ 2:01 ³ 30 ³ 32 28 ¹ 30 ⁴ Jy26 ³ 4GRvr 27 ft 2yr-qua m :32 ⁴ 1:04 ³ 1:35 ¹ 2:04 ³ 2 1 ² 2 ¹ / ₄ 3 ¹ / ₄ 3 ² / ₄ 3 ² / ₄ 2:05 32 ⁴ 32 ¹ 30 ³ 29 ² | LRoy RBouras 1 ⁶⁰ SweetrThnL StOfAffrs MtrlnInstinct 6 ASorrie RBouras 17 ¹⁰ AcefortrAngl MeetMlnMkns BttDrv 8 LGuერი RBouras NB WllAsssd JewelsDiamonds BttDrv | | | | | | | | |

| | | | | | | | | | | |
|----------|--|---|---|------|---|---|---|---|------|------|
| 8 | 10-1 | Samuel Fillion 155 A Blue-White (754-93-99-107 .243) | Tr. Jim Wellwood (40-6-3-7 .250) | 2023 | 0 | 0 | 0 | 0 | 0% | \$00 |
| | ALLSMOKEANDMIRRORS | Jeffrey Wellwood,Toronto,ON | Life | 2022 | 0 | 0 | 0 | 0 | \$00 | |
| | Gray B f 2, Betterthancheddar-Duchess Dolly-Shadow Play Ag11 ³ 4Wbsb 19 ft 2yr-qua m :30 ² :58 ³ 1:28 ¹ 1:57 ¹ 2 3 ⁴ 3 ¹² 5 ¹⁰ / ₄ 5 ¹⁴ 5 ²² 2:01 ³ 31 ¹ 29 ⁴ 29 ² 31 ¹ Jy31 ³ 7Wbsb 21 ft 2yr-f-qua m :29 :59 ² 1:29 ² 1:57 ² 3 8 ¹² / ₂ 8 ¹² / ₂ 8 ¹⁹ 8 ²³ 8 ³¹ 2:03 ³ 31 ² 30 ² 31 ² 30 ² Jy19 ³ 5GRvr 23 gd ¹ qua m :30 ⁴ 1:01 ⁴ 1:32 ¹ 2:02 ¹ 4 3 ⁴ / ₄ 3 ⁴ / ₄ 4 ⁵ / ₂ 2 ³ / ₄ 2 ⁴ / ₄ 2:03 ¹ 31 ⁴ 31 30 ² 30 ² | LRoy JWellwd NB WholeLTLck LittleBetSpcl Rlthbt 6 LRoy JWellwd NB Ladytari SorchaSeelstr ReadyForFn 6 TBorth JWellwd NB DiamondGrI Allsmokeandmirrs IntoG | | | | | | | | |

3

PACE
1 Mile

Grand River Raceway
21-AUG-23

PURSE: \$7,200. FILLIES & MARES - N/W \$15,000 LIFETIME (W-ALL).
AE: N/A \$325 P/S IN 2023.

EXACTA
\$0.20 TRIFECTA
\$0.20 SUPERFACTA
\$0.20 PICK 3

PROBABLE FAVOURITES: 1-7-3-4

WARM-UP PAD

Table 1: Race 1 details including horse names (MISS DEW WRITE), jockeys (Samuel Fillion), trainers (Eric Nadeau), and race results.

Table 2: Race 2 details including horse names (WASAGA), jockeys (Brett Macdonald), trainers (Les Posan), and race results.

Table 3: Race 3 details including horse names (LYONS LADYLUCK), jockeys (Scott Coulter), trainers (Shayne Barrington), and race results.

Table 4: Race 4 details including horse names (HANDBAG OF CHEEZIES), jockeys (Nick Boyd), trainers (Wilford Perrault), and race results.

Table 5: Race 5 details including horse names (WATCH MY HONEYDRIP), jockeys (Travis Henry), trainers (Michelle LeBlanc), and race results.

Table 6: Race 6 details including horse names (STONEBRIDGE PHEME), jockeys (Anthony Haughan), trainers (Jean Paul Marchildon), and race results.

Table 7: Race 7 details including horse names (PREMIER DELIGHT), jockeys (Jeffrey P Hunt), trainers (Jeffrey Hunt), and race results.

4

PACE
1 Mile
 Grand River Raceway
 21-AUG-23

PURSE: \$6,000. FILLIES & MARES - N/W \$3,350. LIFETIME (W-ALL)

EXACTA
\$0.20 TRIFECTA
\$0.20 SUPERFACTA

WARM-UP PAD

PROBABLE FAVOURITES: 1-2-3-7

| | | | | |
|--|--|---|--|--|
| 1 | 9-5 | Garrett Rooney 150 A Red-White-Black (827-151-133-.322) | Tr. Robert McIntosh (214-25-34-27 .247) | 2023 Q2:00 ¹ H GRvr ft 1 1 0 0 100% \$4,350 |
| | WELL ASSESSED | Robert McIntosh Stables Inc,Windsor-Dave Boyle,Bowmanville,ON Breeder: Robert McIntosh Stables Inc,ON-C S X Stables,OH-Dave A Boyle,ON | 2022 0 0 0 0 | \$00 |
| | B f 2, Sunshine Beach-Well Pondered-Ponder | 8700 m :28 ² :59 ⁴ 1:29 ⁴ 2:01 2 43 $\frac{1}{2}$ 2:01 29 30 ³ 30 ³ 31 ¹ | 1nk 1nk 2:01 29 30 ³ 30 ³ 31 ¹ | NSteward RMcIntsh ¹ 00 WillAsssd AcefortyfrLd ChddrCrssng 6 |
| | Ag13 ³ sLeam 26 ft ¹ Prospect 8700 m :28 ² :59 ⁴ 1:29 ⁴ 2:01 2 43 $\frac{1}{2}$ 2:01 29 30 ³ 30 ³ 31 ¹ | 2 43 $\frac{1}{2}$ 2:01 29 30 ³ 30 ³ 31 ¹ | 1nk 1nk 2:01 29 30 ³ 30 ³ 31 ¹ | Life Q2:00 ¹ H GRvr 2yo 1 wins \$4,350 |
| | Ag2 ³ iGRvr 23 ft 2yr-qua m :30 ² 1:01 ² 1:31 ⁴ 2:00 ¹ 4 21 2 ¹ / ₄ 3 ² 2 ¹ / ₄ 1 ¹ / ₂ 2:00 ¹ 30 ³ 31 ¹ 30 ² 28 | 4 21 2 ¹ / ₄ 3 ² 2 ¹ / ₄ 1 ¹ / ₂ 2:00 ¹ 30 ³ 31 ¹ 30 ² 28 | 2 ¹ / ₄ 1 ¹ / ₂ 2:00 ¹ 30 ³ 31 ¹ 30 ² 28 | BMacDld RMcIntsh NB WillAsssd LoveThaMirmt CabanaNB |
| Jy26 ³ iGRvr 27 ft 2yr-qua m :32 ⁴ 1:04 ³ 1:35 ¹ 2:04 ³ 1 22 1 ¹ / ₄ 1 ¹ / ₄ 1 ² 1 ¹ / ₄ 2:04 ³ 33 ¹ 31 ² 30 ² 29 ² | 1 22 1 ¹ / ₄ 1 ¹ / ₄ 1 ² 1 ¹ / ₄ 2:04 ³ 33 ¹ 31 ² 30 ² 29 ² | 1 ² 1 ¹ / ₄ 2:04 ³ 33 ¹ 31 ² 30 ² 29 ² | BMacDld RMcIntsh NB WillAsssd JewelsDiamonds BetrDrv | |
| 2 | 2-1 | J Bradley Harris 155 A Wh-Grn-Blk (851-150-140-117 .313) | Tr. Shawn Steacy (326-54-46-43 .288) | 2023 1:59 H GRvr ft 2 1 0 0 50% \$3,300 |
| | SWEETER THAN LOU | Diane Bertrand-Robert Gilhespy,Lake Country,BC-Mark Steacy,Lansdowne,ON Breeder: Diane Bertrand,AB | 2022 0 0 0 0 | \$300 |
| | Br f 2, Sweet Lou-No More Loving-Western Hanover | 6000 m :29 ³ :58 ³ 1:28 ³ 1:59 2 21 ³ / ₄ 22 22 ¹ / ₄ 21 ¹ / ₂ 11 1:59 30 29 30 30 | 2 21 ³ / ₄ 22 22 ¹ / ₄ 21 ¹ / ₂ 11 1:59 30 29 30 30 | BMcClure SSteacy ¹ 00 SweetThnL StIOAffrs MtrlnInstnc 6 |
| | Ag14 ³ iGRvr 21 ft 2yr-nw1rft 6000 m :28 ⁴ 1:00 1:28 ² 1:57 ³ 5 58 ¹ / ₂ 58 ¹ / ₂ $\frac{1}{4}$ 41 ² 41 ¹ / ₂ 51 ⁷ / ₄ 2:01 30 ² 31 ¹ 29 ¹ 30 ¹ | 5 58 ¹ / ₂ 58 ¹ / ₂ $\frac{1}{4}$ 41 ² 41 ¹ / ₂ 51 ⁷ / ₄ 2:01 30 ² 31 ¹ 29 ¹ 30 ¹ | 2:01 30 ² 31 ¹ 29 ¹ 30 ¹ | CKelly SSteacy ¹⁸ 50 WellAsssd PremierDelght TrueTht NoPlaceToHid 7 |
| | Jy24 ³ iGRvr 22 ft 2yr-nw1rft 6000 m :30 1:00 ² 1:30 ² 1:58 ² 3 46 46 ¹ / ₂ $\frac{1}{4}$ 3 ² 21 ¹ / ₂ 3 ¹ / ₂ 2:00 ¹ 31 ¹ 30 ² 29 ¹ 29 ¹ | 3 46 46 ¹ / ₂ $\frac{1}{4}$ 3 ² 21 ¹ / ₂ 3 ¹ / ₂ 2:00 ¹ 31 ¹ 30 ² 29 ¹ 29 ¹ | 2:00 ¹ 31 ¹ 30 ² 29 ¹ 29 ¹ | JDrury SSteacy ¹⁸ 50 WellAsssd PremierDelght TrueTht NoPlaceToHid 7 |
| Jy14 ³ wWbsb 20 ft 2yr-f-qua m :31 ² 1:00 1:29 ³ 1:58 ³ 5 79 ¹ / ₂ 71 ³ / ₂ $\frac{1}{2}$ 71 ⁶ 61 ⁵ 51 ⁷ 2:02 33 ¹ 29 ² 30 ¹ 29 ¹ | 5 79 ¹ / ₂ 71 ³ / ₂ $\frac{1}{2}$ 71 ⁶ 61 ⁵ 51 ⁷ 2:02 33 ¹ 29 ² 30 ¹ 29 ¹ | 2:02 33 ¹ 29 ² 30 ¹ 29 ¹ | JDrury SSteacy ¹⁸ 50 WellAsssd PremierDelght TrueTht NoPlaceToHid 7 | |
| Jy7 ³ sWbsb 22 ft 2yr-f-qua m :31 ² 1:00 1:29 ³ 1:58 ³ 5 79 ¹ / ₂ 71 ³ / ₂ $\frac{1}{2}$ 71 ⁶ 61 ⁵ 51 ⁷ 2:02 33 ¹ 29 ² 30 ¹ 29 ¹ | 5 79 ¹ / ₂ 71 ³ / ₂ $\frac{1}{2}$ 71 ⁶ 61 ⁵ 51 ⁷ 2:02 33 ¹ 29 ² 30 ¹ 29 ¹ | 2:02 33 ¹ 29 ² 30 ¹ 29 ¹ | JDrury SSteacy ¹⁸ 50 WellAsssd PremierDelght TrueTht NoPlaceToHid 7 | |
| 3 | 3-1 | Samuel Fillion 155 A Blue-White (754-93-99-107 .243) | Tr. Ashley Lendvoy (91-8-8-15 .191) | 2023 6 0 0 5 0% \$3,852 |
| | NO PLACE TO HIDE | Big Als Stables Inc,ON-Dana L Parham,FL Breeder: Big Als Stables Inc,ON-Dana L Parham,FL | 2022 0 0 0 0 | \$00 |
| | B f 3, Bettors Delight-Place At The Table-Artsplace | 6000 m :28 ² :59 1:29 1:58 ³ 6 3 ³ / ₄ 3 ³ / ₄ 4 ³ / ₂ 4 ³ / ₄ 3 ³ 1:59 ¹ 29 30 ³ 30 29 ³ | 6 3 ³ / ₄ 3 ³ / ₄ 4 ³ / ₂ 4 ³ / ₄ 3 ³ 1:59 ¹ 29 30 ³ 30 29 ³ | SaFillion ALendvoy ⁵ 70 SweetMoll RollOnMywa NoPlaceToHid 6 |
| | Ag14 ³ iGRvr 21 ft f-nw3000lcd 6000 m :27 ⁴ :57 ⁴ 1:27 ² 1:58 ¹ 3 3 ⁵ / ₄ 3 ⁴ / ₄ 3 ⁵ / ₄ 3 ⁷ 3 ⁶ / ₄ 1:59 ³ 28 ⁴ 30 ² 29 ⁴ 31 | 3 3 ⁵ / ₄ 3 ⁴ / ₄ 3 ⁵ / ₄ 3 ⁷ 3 ⁶ / ₄ 1:59 ³ 28 ⁴ 30 ² 29 ⁴ 31 | 3 ⁵ / ₄ 3 ⁷ 3 ⁶ / ₄ 1:59 ³ 28 ⁴ 30 ² 29 ⁴ 31 | Life SaFillion ALendvoy ¹⁷ 90 PremierDelght TrueTht NoPlaceToHid 7 |
| | Ag7 ³ sGRvr 22 ft f-nw1r8000l 6600 m :28 ² :59 1:27 1:56 ² 3 2 ² 2 ² 3 ⁴ / ₄ 3 ⁶ 3 ⁹ / ₄ 1:58 ² 28 ⁴ 30 ³ 28 ³ 30 ¹ | 3 2 ² 2 ² 3 ⁴ / ₄ 3 ⁶ 3 ⁹ / ₄ 1:58 ² 28 ⁴ 30 ³ 28 ³ 30 ¹ | 3 ⁶ 3 ⁹ / ₄ 1:58 ² 28 ⁴ 30 ³ 28 ³ 30 ¹ | SaFillion ALendvoy ⁶ 90 Jemenar RoseRunVette NoPlaceToHid 9 |
| Jy23 ³ iGRvr 19 ft f-nw3000lcd 6000 m :29 ² :58 ⁴ 1:28 ¹ 1:58 ² 6 2 ² / ₄ 3 ² 4 ⁶ 3 ⁷ 3 ¹⁰ / ₄ 2:00 ² 29 ⁴ 29 ² 30 ¹ 31 ¹ | 6 2 ² / ₄ 3 ² 4 ⁶ 3 ⁷ 3 ¹⁰ / ₄ 2:00 ² 29 ⁴ 29 ² 30 ¹ 31 ¹ | 2:00 ² 29 ⁴ 29 ² 30 ¹ 31 ¹ | SaFillion ALendvoy ⁵ 90 ZbsBrkngDwn StemThTd NoPlaceThd 7 | |
| Jy12 ³ iGRvr 23 ft qua m :29 ³ 1:01 ¹ 1:31 ⁴ 2:02 ² 4 2 ² 2 ¹ / ₄ 2 ¹ / ₂ 2 ³ / ₄ 2 ¹ / ₂ 2:02 ² 30 31 ³ 30 ² 30 ² | 4 2 ² 2 ¹ / ₄ 2 ¹ / ₂ 2 ³ / ₄ 2 ¹ / ₂ 2:02 ² 30 31 ³ 30 ² 30 ² | 2:02 ² 30 31 ³ 30 ² 30 ² | SaFillion ALendvoy ¹⁸ 50 AusPssns NoPlacThd OutlawJssJms | |
| Jn19 ³ sGRvr 21 ft f-nw1r8000l 6600 m :28 ³ :58 ³ 1:28 ¹ 1:57 ¹ scratched - vet(sick) | scratched - vet(sick) | scratched - vet(sick) | ALendvoy RunBaby Remissance EditorsChoice 7 | |
| 4 | 12-1 | Daryl Thiessen 171 A (458-52-65-51 .229) | Tr. Rebecca Geisel (14-1-0-2 .119) | 2023 10 0 0 1 0% \$1,604 |
| | BETTOR IN THE DARK | Rebecca Geisel,Hanover,ON Breeder: Rebecca Geisel,Hanover,ON | 2022 1 0 0 0 | \$00 |
| | B f 3, Bettors Delight-Lights Go Out-Western Ideal | 4400 m :29 ³ 1:00 ⁴ 1:31 2:02 ² 1 5 ⁷ 6 ⁹ / ₄ 4 ⁸ / ₄ 4 ⁷ / ₄ 4 ³ / ₄ 2:03 ¹ 31 31 ³ 30 30 ³ | 1 5 ⁷ 6 ⁹ / ₄ 4 ⁸ / ₄ 4 ⁷ / ₄ 4 ³ / ₄ 2:03 ¹ 31 31 ³ 30 30 ³ | DThiessenRGeisel ⁸ 70 DALunchbox AllBetsOnRed PullTheGate 7 |
| | Ag13 ³ iGRvr 20 ft nw2500lcd 4400 m :27 ⁴ :57 ⁴ 1:27 ² 1:58 ¹ 2 6 ¹² 5 ¹⁴ 6 ¹⁶ 6 ¹⁸ 6 ²⁰ / ₄ 2:02 ¹ 30 ¹ 30 ² 30 31 ³ | 2 6 ¹² 5 ¹⁴ 6 ¹⁶ 6 ¹⁸ 6 ²⁰ / ₄ 2:02 ¹ 30 ¹ 30 ² 30 31 ³ | 6 ¹⁸ 6 ²⁰ / ₄ 2:02 ¹ 30 ¹ 30 ² 30 31 ³ | Life TBorth RGeisel ⁵⁰ 15 PremierDelght TrueTht NoPlaceToHid 7 |
| | Ag7 ³ sGRvr 22 ft f-nw1r8000l 6600 m :29 ³ 1:00 ³ 1:31 2:02 5 3 ⁵ / ₄ 3 ⁸ / ₄ 3 ¹⁰ / ₄ 3 ¹⁰ / ₄ 2 ⁸ 2:03 ² 30 ⁴ 31 ³ 30 ³ | 5 3 ⁵ / ₄ 3 ⁸ / ₄ 3 ¹⁰ / ₄ 3 ¹⁰ / ₄ 2 ⁸ 2:03 ² 30 ⁴ 31 ³ 30 ³ | 3 ¹⁰ / ₄ 3 ¹⁰ / ₄ 2:03 ² 30 ⁴ 31 ³ 30 ³ | TBorth RGeisel ¹⁸ 50 AusPssns BettorInTheDrk Hogshw |
| Jy26 ³ iGRvr 27 ft qua m :29 ³ 1:01 ¹ 1:30 ⁴ 2:00 ³ 1 7 ¹⁸ / ₄ 7 ²¹ 7 ²⁵ / ₄ 7 ²⁹ / ₂ 7 ³⁰ / ₄ 2:06 ³ 33 ¹ 32 ¹ 30 ³ 30 ³ | 1 7 ¹⁸ / ₄ 7 ²¹ 7 ²⁵ / ₄ 7 ²⁹ / ₂ 7 ³⁰ / ₄ 2:06 ³ 33 ¹ 32 ¹ 30 ³ 30 ³ | 2:06 ³ 33 ¹ 32 ¹ 30 ³ 30 ³ | JRyan RGeisel ¹¹ 30 Moona EditorsChoice ArIOSport 7 | |
| Jn10 ³ iGRvr 25 ft f-nw2500lcd 4400 m :30 1:01 ¹ 1:31 ³ 2:02 ¹ 6 6 ¹⁰ x6 ²² 6 ³² 6 ^{dis} 6 ^{dis} 6 ^{dis} 6 ^{dis} 2:00 ² 30 31 ³ 30 ² 30 ² | 6 6 ¹⁰ x6 ²² 6 ³² 6 ^{dis} 6 ^{dis} 6 ^{dis} 6 ^{dis} 2:00 ² 30 31 ³ 30 ² 30 ² | 2:00 ² 30 31 ³ 30 ² 30 ² | JRyan RGeisel ¹² 70 MadamKII ShtgnsShrk ItisWhalitsMil 6 | |
| Jn3 ³ iGRvr 29 ft nw2500lcd 4400 m :29 ¹ 1:01 ² 1:32 ³ 2:02 ² 3ix 6 ^{dis} 6 ^{dis} 6 ^{dis} 6 ^{dis} 6 ^{dis} 2:00 ² 30 29 ¹ 31 ¹ 29 ⁴ | 3ix 6 ^{dis} 6 ^{dis} 6 ^{dis} 6 ^{dis} 6 ^{dis} 2:00 ² 30 29 ¹ 31 ¹ 29 ⁴ | 2:00 ² 30 29 ¹ 31 ¹ 29 ⁴ | JRyan RGeisel ⁸ 55 SharkBl StarsTreasr PrinceWassrTrfr 6 | |
| 5 | 10-1 | Ken Oliver 160 Blue-White-Yellow (22-3-2-2 .217) | Tr. Ken Oliver (87-10-7-9 .194) | 2023 3 0 0 1 0% \$528 |
| | CLARES SCAMPER | Milton Young,Paradise,NL Breeder: Milton C Young,NL | 2022 0 0 0 0 | \$00 |
| | B f 3, Hes Watching-Bachata Hanover-Art Major | 8000 m :28 ³ :58 1:26 ⁴ 1:56 ¹ 4 6 ⁹ 5 ¹² $\frac{1}{2}$ 5 ¹³ 6 ¹⁶ 6 ²² / ₂ 2:00 ³ 30 ² 30 29 31 ¹ | 4 6 ⁹ 5 ¹² $\frac{1}{2}$ 5 ¹³ 6 ¹⁶ 6 ²² / ₂ 2:00 ³ 30 ² 30 29 31 ¹ | KnOliver KnOliver ²² 60 MilgnPhl TrestrsWtchng Easybmtmchp 7 |
| | Ag5 ³ sGeoD 20 ft f-nw1r5000l 4400 m :30 ⁴ 1:02 1:32 ³ 2:03 2x $\frac{1}{2}$ 7 ¹¹ / ₂ 7 ⁹ / ₂ 7 ⁷ / ₄ 6 ⁷ / ₄ 6 ⁷ / ₄ 2:04 ³ 30 ² 30 ³ 30 ³ | 2x $\frac{1}{2}$ 7 ¹¹ / ₂ 7 ⁹ / ₂ 7 ⁷ / ₄ 6 ⁷ / ₄ 6 ⁷ / ₄ 2:04 ³ 30 ² 30 ³ 30 ³ | 6 ⁷ / ₄ 6 ⁷ / ₄ 2:04 ³ 30 ² 30 ³ 30 ³ | Life KnOliver KnOliver ³⁴ 0 BtlrNtSss AcefortfrAngr AllstrSmls 8 |
| | Jy23 ³ iGRvr 27 ft qua m :29 ³ 1:00 ³ 1:31 2:02 5 3 ⁵ / ₄ 3 ⁸ / ₄ 3 ¹⁰ / ₄ 3 ¹⁰ / ₄ 2 ⁸ 2:03 ² 30 ⁴ 31 ³ 30 ³ | 5 3 ⁵ / ₄ 3 ⁸ / ₄ 3 ¹⁰ / ₄ 3 ¹⁰ / ₄ 2 ⁸ 2:03 ² 30 ⁴ 31 ³ 30 ³ | 3 ¹⁰ / ₄ 3 ¹⁰ / ₄ 2:03 ² 30 ⁴ 31 ³ 30 ³ | KnOliver KnOliver ¹⁵ 55 AllstrSmls TreasuredLgc ClarsScmp 6 |
| Jy16 ³ iGRvr 27 ft qua m :29 ¹ 1:01 ² 1:32 ³ 2:03 1 4 ⁷ / ₄ $\frac{1}{4}$ 4 ⁴ / ₄ $\frac{1}{4}$ 3 ³ / ₄ 3 ⁴ / ₄ 3 ⁴ / ₄ 2:04 32 ¹ 30 ⁴ 30 ¹ 30 ⁴ | 1 4 ⁷ / ₄ $\frac{1}{4}$ 4 ⁴ / ₄ $\frac{1}{4}$ 3 ³ / ₄ 3 ⁴ / ₄ 3 ⁴ / ₄ 2:04 32 ¹ 30 ⁴ 30 ¹ 30 ⁴ | 2:04 32 ¹ 30 ⁴ 30 ¹ 30 ⁴ | KnOliver KnOliver ¹⁵ 55 AllstrSmls TreasuredLgc ClarsScmp 6 | |
| Jy1 ³ iGRvr 27 ft qua m :29 ¹ 1:01 ² 1:32 ³ 2:03 5 3 ⁴ 3 ³ / ₂ 3 ³ / ₄ 3 ³ 2 ^{nk} 2:00 ¹ 30 29 ¹ 31 ¹ 29 ⁴ | 5 3 ⁴ 3 ³ / ₂ 3 ³ / ₄ 3 ³ 2 ^{nk} 2:00 ¹ 30 29 ¹ 31 ¹ 29 ⁴ | 2:00 ¹ 30 29 ¹ 31 ¹ 29 ⁴ | KnOliver KnOliver ¹⁵ 55 KieraSeelstr ClaresScampr TIConwa | |
| 6 | 9-2 | Scott Coulter 163 A Tan-Black-White (698-84-90-104 .241) | Tr. Dean Nixon (92-10-8-19 .225) | 2023 Q2:00 ⁴ H Leam ft 7 0 0 0 0% \$486 |
| | ULTIMATE TWIX | Madonna Morrison,Oak Point,NB Breeder: Madonna J Morrison,NB | 2022 2:05 ¹ H Trur gd 6 1 2 0 17% \$1,490 | |
| | B f 3, Pang Shui-Lyons Katrina-Major In Art | 1425 m :29 ¹ 1:00 ³ 1:33 2:00 ⁴ 4 2 ³ 3 ² / ₂ $\frac{1}{2}$ 1 ² 1 ² 1:1 ³ 2:00 ⁴ 29 ⁴ 31 ² 32 27 ⁴ | 4 2 ³ 3 ² / ₂ $\frac{1}{2}$ 1 ² 1 ² 1:1 ³ 2:00 ⁴ 29 ⁴ 31 ² 32 27 ⁴ | NSteward DNixon ¹⁸ 50 UltimaTwix ELWldSprt UnicornSprks |
| | Ag13 ³ iGRvr 21 ft qua m :29 ¹ 1:00 ³ 1:33 2:00 ⁴ 4 2 ³ 3 ² / ₂ $\frac{1}{2}$ 1 ² 1 ² 1:1 ³ 2:00 ⁴ 29 ⁴ 31 ² 32 27 ⁴ | 4 2 ³ 3 ² / ₂ $\frac{1}{2}$ 1 ² 1 ² 1:1 ³ 2:00 ⁴ 29 ⁴ 31 ² 32 27 ⁴ | 2:00 ⁴ 29 ⁴ 31 ² 32 27 ⁴ | Life MMacDld DCrowe ¹⁷ 40 NovaScotStrng WoodmerAmr BareftBd 6 |
| | Jn18 ³ iTrur 14 ft nw1-2rl-hcp 1425 m :29 ³ :58 ⁴ 1:28 1:58 ³ 3 4 ⁴ 4 ⁵ / ₂ $\frac{1}{2}$ 4 ⁸ / ₂ 5 ⁸ 6 | | | |



TAKEOUT AVAILABLE.
Seating right next to the track!

Check out the menu at
thegrandway.com

JOIN THE FUN!

All ages welcome!

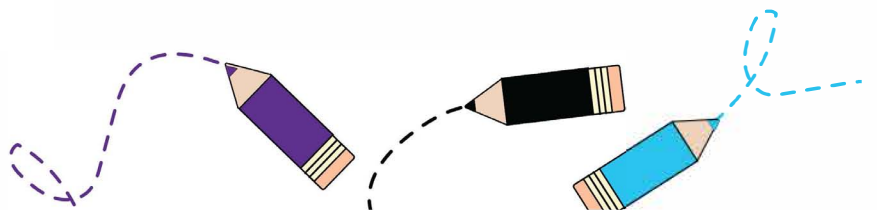


- LEARN ABOUT HORSERACING
- GO FOR A BARN TOUR
- DO FUN ACTIVITIES
- AND MORE...

NEIGHbourhood

Go to a mutuel teller to get your
NEIGHbourhood activity bag!

grandriverraceway.com



5

PACE
1 Mile
Grand River Raceway
21-AUG-23

PURSE: \$8,000. FILLIES & MARES - N/W 2 RACES OR \$30,500
LIFETIME (W-ALL). AE: N/A \$1,330 P/S IN 2023-23.

EXACTA
\$0.20 TRIFECTA
\$0.20 SUPER HI 5

WARM-UP PAD

PROBABLE FAVOURITES: 6-7-4-9

Table 1: Race 1 results. Header: 6-1 TWENTYEIGHT LATE. Trainers: Daryl Thiessen, Tr. Larry Jewitt. Results include horse names, ages, genders, and performance data.

Table 2: Race 2 results. Header: 8-1 PANNINGFORTREASURE L. Trainers: Garrett Rooney, Tr. Angela Carroll. Results include horse names, ages, genders, and performance data.

Table 3: Race 3 results. Header: 10-1 LOLS SUNSHINE. Trainers: Lorne House, Tr. Scott McNiven. Results include horse names, ages, genders, and performance data.

Table 4: Race 4 results. Header: 3-1 DUCHESS OF BRANT. Trainers: Travis Henry, Tr. Kristopher Haskell. Results include horse names, ages, genders, and performance data.

Table 5: Race 5 results. Header: 7-1 DRAGON TERROR L. Trainers: Natasha K Day, Tr. Natasha Day. Results include horse names, ages, genders, and performance data.

Table 6: Race 6 results. Header: 8-5 STORYBOOK BELLA. Trainers: J Bradley Harris, Tr. Robert Kyle Fellows. Results include horse names, ages, genders, and performance data.

Table 7: Race 7 results. Header: 2-1 GLENBORO L. Trainers: Ryan P Desroche, Tr. Jodie Cullen. Results include horse names, ages, genders, and performance data.

Table 8: Race 8 results. Header: 12-1 CREDIT KAWHI. Trainers: Anthony Haughan, Tr. Patrick Bissett. Results include horse names, ages, genders, and performance data.

Table 9: Race 9 results. Header: 4-1 STEEL BEAUTY. Trainers: Brett Macdonald, Tr. Tim Myers. Results include horse names, ages, genders, and performance data.

6

TROT
1 Mile
 Grand River Raceway
 21-AUG-23

PROSPECT SERIES
PURSE: \$8,500. PROSPECT SERIES : 2 YEAR OLD FILLY TROT.
 LEG 4A. (STARTING FEE \$100 CDN).

EXACTA
\$0.20 TRIFECTA
\$0.20 SUPERFECTA
\$0.20 PICK 4
 PROBABLE FAVOURITES: 1-4-2-5

WARM-UP PAD

| 1 | | 3-1 | | Scott Coulter 163 A Tan-Black-White (698-84-90-104 .241) | | Tr. Shawn Steacy (326-54-46-43 .288) | | 2023 | | 3 0 0 0 | | 0% | | \$2,950 | | | | | | | | | | | | | | |
|-------------------|-------------|----------------------------------|-------|--|------------------|--------------------------------------|-------------------|-------------------|----|--------------------------------|---------------------------------|---------------------------------|--------------------------------|--------------------------------|--------------------------------|-------------------|-------------------|-----------------|-----------------|-----------------|-----------------|---------|------------------|--------------|-----------------|--------------|---------|---|
| Red | | Blk f 2, Mister Bianco-Caribbean | | Conch-King Conch | | Tyler Snoek,Elmwood,ON | | 2022 | | 0 0 0 0 | | 0 | | \$00 | | | | | | | | | | | | | | |
| Ag7 ³ | | 3Wbsb 22 ft | | OnSS-rs | | Breeder: Tyler Snoek,ON | | Life | | | | | | \$2,950 | | | | | | | | | | | | | | |
| Jy31 ³ | 3Wbsb 19 ft | OnSS-rs | 22600 | m | :28 ² | :59 ³ | 1:29 ² | 1:59 | x8 | 9x26 | 9dis | 9dis | 9dis | 9dis | 9dis | 43 | 1:59 ⁴ | 30 ³ | 31 | 29 ² | 28 ⁴ | JDrury | SSteacy | 4410 | KinnderHotblood | Abikadabra | TeaLake | 9 |
| Jy17 ³ | 4Wbsb 25 ft | OnSS-rs | 23000 | m | :29 | 1:00 ³ | 1:30 ¹ | 1:59 ¹ | 3 | 57 ³ / ₄ | 44 ³ / ₄ | 53 ³ / ₄ | 53 ¹ / ₄ | 43 | 56 ¹ / ₄ | 1:59 ⁴ | 29 ⁴ | 30 ² | 29 ¹ | 30 ² | BMcClure | SSteacy | 28 ²⁰ | RLiza | TeaLake | Shetrolsalot | 8 | |
| Jy11 ³ | 3Wbsb 24 ft | 2yr-f-qua | 22200 | m | :28 ³ | :59 | 1:28 ⁴ | 1:58 ³ | 2 | 56 | o66 ¹ / ₄ | o43 ¹ / ₄ | 53 | 56 ¹ / ₄ | 2:03 ² | 32 ¹ | 30 ² | 30 ⁴ | 30 ¹ | BMcClure | SSteacy | NB | Abikadabra | RhythmOfLife | CaribbeanSky | | | |
| Jy4 ³ | 4Wbsb 25 ft | 2yr-qua | | m | :31 | 1:01 | 1:30 ³ | 1:59 | 2x | 72 ¹ | 72 ² | 72 ⁰ | 72 ⁵ | 73 ¹ | 2:05 ¹ | 35 ¹ | 30 ¹ | 29 ¹ | 30 ³ | BMcClure | SSteacy | NB | HilTheBank | NoOne | WomanOfPassion | | | |

| 2 | | 5-1 | | Jason Ryan 170 A Green-White (908-126-117-144 .263) | | Tr. Paul Reid (60-9-4-8 .231) | | 2023 | | 6 0 0 2 | | 0% | | \$3,268 | | | | | | | | | | | | |
|-------------------|--------------------------|---|-------|---|------------------|--------------------------------|-------------------|-------------------|---|--------------------------------|-----------------|---------------------------------|--------------------------------|--------------------------------|-------------------|-----------------|-----------------|-----------------|-----------------|----------|-------|------------------|--------------|---------------|----------------|---|
| Blue | | B f 2, Kadabra-Greathallofchina-Cantab Hall | | Sandra Stamey,Deland,FL | | Sandra Stamey,Deland,FL | | 2022 | | 0 0 0 0 | | 0 | | \$00 | | | | | | | | | | | | |
| Ag13 ³ | | 2GeoD 23 ft | | Prospect | | Breeder: Double Spring Farm,OH | | Life | | | | | | \$3,268 | | | | | | | | | | | | |
| Jy25 ³ | 2GeoD 22 ft | Prospect | 8500 | m | :30 ² | 1:01 ⁴ | 1:32 | 2:04 ² | 1 | 1 1/4 | 2 1/2 | 3 1/2 | 3 1/2 | 3 2 3/4 | 2:05 | 30 ² | 31 ³ | 31 ⁴ | 31 ¹ | JRyan | PReid | 28 ⁵ | Sandoon | ClevelandUBet | GracefulChina | 5 |
| Jy17 ³ | 3Wbsb 25 ft | OnSS-rs | 8700 | m | :31 ³ | 1:04 ² | 1:36 ² | 2:05 ⁴ | 7 | 44 ³ / ₄ | 46 | o45 | 46 | 47 1/4 | 2:07 ¹ | 32 ³ | 33 | 31 ⁴ | 29 ⁴ | MEnberg | PReid | 30 ²⁰ | TheBlondy | ChaudHolliday | MuscleCharm | 7 |
| Jy23 ³ | 2GeoD 24 ft | 2yr-cond | 8600 | m | :31 ¹ | 1:03 ³ | 1:34 ³ | 2:04 ¹ | 1 | 1 1/2 | 1 1/2 | 1 1/2 | 1 1/4 | 3 3 1/2 | 2:04 ⁴ | 31 ¹ | 32 ² | 31 | 30 ¹ | JRyan | PReid | 13 ⁵ | ChaudHollida | TheBlond | GracefulChin | 6 |
| Jn15 ³ | 2Wbsb 21 ft | 2yr-f-nw1rl | 22200 | m | :28 ³ | :59 | 1:28 ⁴ | 1:58 ³ | 5 | 89 ¹ / ₂ | 81 ¹ | o87 ¹ / ₄ | 87 ¹ / ₂ | 89 ¹ / ₂ | 2:00 ² | 30 ² | 30 ⁴ | 29 | 30 ¹ | TJones | PReid | 51 ²⁵ | FLiza | TeaLake | Shetrolsalot | 8 |
| Jn9 ³ | 3Wbsb 12 sy ³ | 2yr-f-qua | 6500 | m | :31 | 1:03 | 1:33 ¹ | 2:02 ³ | 4 | 1 1/2 | 1 1/2 | 1 1/2 | 2nk | 48 1/2 | 2:04 ¹ | 31 | 32 | 30 ¹ | 31 | SYoung | PReid | 5 ⁸⁰ | FliriDncr | StonBrk | Northernchnclr | 5 |
| Jn23 ³ | 2Wbsb 15 ft | 2yr-f-qua | 16000 | m | :29 ³ | 1:00 ³ | 1:29 ¹ | 1:57 | 2 | 61 ² | 61 1/2 | 61 ⁵ | 62 2 1/4 | 72 ² | 2:01 ² | 32 | 30 ⁴ | 29 ² | 29 ¹ | SYoung | PReid | 61 ⁹⁰ | TactiStrk | ClassyRol | Dontmesswthm | 7 |
| Jn9 ³ | 3Wbsb 12 sy ³ | 2yr-f-qua | | m | :31 ³ | 1:02 ² | 1:32 ⁴ | 2:01 ² | 2 | 46 1/2 | 46 | 45 | 47 | 51 ² | 2:03 ⁴ | 32 ⁴ | 30 ⁴ | 30 ¹ | 30 | SYoung | PReid | NB | TactiStrk | BellaBellssm | MsciChrm | |
| Jn9 ³ | 3Wbsb 12 sy ³ | 2yr-f-qua | | m | :32 | 1:06 ³ | 1:38 ⁴ | 2:07 ³ | 5 | 4 ⁵ | 5 ⁶ | o4 ⁴ | 3 ⁴ | 46 3/4 | 2:09 | 33 | 34 ⁴ | 31 ⁴ | 29 ² | BMcClure | PReid | NB | KarensDream | TeaLake | ValuableMiss | |

| 3 | | 8-1 | | Wayne Henry 176 A Brown-Gold (2-0-0-0) | | Tr. Wayne Henry (2-0-0-0) | | 2023 | | Q2:05 | | H GRvr | | ft | | 2 0 0 0 | | 0% | | \$680 | | | | | | | |
|-------------------|-------------|-----------------------------------|-------|--|------------------|---------------------------|-------------------|-------------------|----|-----------------------|-----------------|---------------------|------------------|--------------------------------|-------------------|-----------------|-----------------|-----------------|-----------------|--------|--------|------------------|---------------|---------------|---------------|---------------|---|
| White | | B f 2, Lookslikeachpndale-Phoenix | | Goal-Here Comes Herbie | | Henry Stable,Arthur,ON | | 2022 | | 0 0 0 0 | | 0 | | 0 | | 0 | | 0 | | \$00 | | | | | | | |
| Ag2 ³ | | 2GRvr 23 ft | | qua | | Breeder: Henry Stable,ON | | Life | | Q2:05 | | H GRvr | | 2yo | | | | | | \$680 | | | | | | | |
| Jy25 ³ | 2GeoD 22 ft | Prospect | 8500 | m | :30 ³ | 1:02 ² | 1:32 | 2:02 | 1 | 3 ³ | 3 3 1/2 | x5 ¹⁸ | 52 ¹ | 53 ³ / ₄ | 2:08 ³ | 31 ¹ | 31 ⁴ | 32 ³ | 33 | WHenry | WHenry | 5 ⁹⁰ | RadicalLegacy | ChaudHolliday | Yellit | 5 | |
| Jy17 ³ | 3Wbsb 25 ft | OnSS-rs | 8700 | m | :32 | 1:02 ⁴ | 1:34 ¹ | 2:05 | 2 | 1 ² | 1 5/4 | 1 4 1/2 | 1 3 1/2 | 1 1 1/4 | 2:05 | 32 | 30 ⁴ | 31 ² | 30 ⁴ | WHenry | WHenry | NB | HadMeAWhiskey | Sandoon | SuzuValentine | | |
| Jy7 ³ | 2Wbsb 22 ft | 2yr-f-qua | 8600 | m | :31 ¹ | 1:03 ³ | 1:34 ³ | 2:04 ¹ | 5x | 61 1/2 | 68 1/2 | x6 ¹⁵ | 6 ²⁴ | 62 3/4 | 2:10 ¹ | 34 | 31 ¹ | 32 ² | 32 ³ | WHenry | WHenry | 16 ²⁵ | ChaudHollida | TheBlond | GracefulChin | 6 | |
| Jy1 ³ | 2Hnr 29 ft | qua | 22200 | m | :29 ² | 1:00 ⁴ | 1:31 ² | 2:00 ³ | | scratched - vet(sick) | | | | | | | | | | | WHenry | WHenry | | BirthDayMone | CKanTrt | DamselSeelstr | 7 |
| Jy7 ³ | 2Wbsb 22 ft | 2yr-f-qua | | m | :31 | 1:00 ³ | 1:30 ¹ | 2:01 ² | 1 | 5 ⁷ | 5 ¹⁰ | 5 ^{10 1/2} | x5 ¹² | 52 ² | 2:05 ⁴ | 32 ² | 30 ¹ | 29 ³ | 33 ³ | WHenry | WHenry | NB | SummrCrsh | TequilaSnst | ChaudHollid | | |
| Jy1 ³ | 2Hnr 29 ft | qua | | m | :32 | 1:03 ⁴ | 1:35 | 2:05 ² | 4 | 2 5 1/2 | 2 ⁶ | 2 ⁸ | 3 7 1/2 | 39 1/4 | 2:07 ¹ | 33 | 32 | 31 ³ | 30 ³ | WHenry | WHenry | NB | YetiSetG | ChaudHollida | HadMeAWhiske | | |

| 4 | | 4-1 | | J Bradley Harris 155 A Wh-Gm-Blk (851-150-140-117 .313) | | Tr. Paul Cameron (23-5-3-4 .347) | | 2023 | | 4 0 0 1 | | 0% | | \$2,874 | | | | | | | | | | | | |
|-------------------|--------------------------|-------------------------------|-------|---|------------------|----------------------------------|-------------------|-------------------|---|----------------|-----------------|----------------|----------------|---------|-------------------|-----------------|-----------------|-----------------|-----------------|----------|---------|------------------|-------------|---------------|---------------|----|
| Green | | Br f 2, Muscle Mass-Exquisite | | Charm-Yankee Glide | | Paul & Jayme Cameron,Guelph,ON | | 2022 | | 0 0 0 0 | | 0 | | \$00 | | | | | | | | | | | | |
| Ag13 ³ | | 2GeoD 23 ft | | Prospect | | Breeder: Willow Oak Ranch,TN | | Life | | | | | | \$2,874 | | | | | | | | | | | | |
| Jy25 ³ | 2GeoD 22 ft | Prospect | 8500 | m | :30 ³ | 1:01 ⁴ | 1:32 | 2:04 ² | 4 | o2 1/4 | 1 1 1/2 | 1 1 1/2 | 1 1 1/4 | 43 1/4 | 2:05 | 30 ² | 31 ² | 31 ³ | 31 ³ | TCullen | PCamern | *35 | Sandoon | ClevelandUBet | GracefulChina | 5 |
| Jy31 ³ | 3Wbsb 19 ft | OnSS-rs | 8700 | m | :31 ³ | 1:04 ² | 1:36 ² | 2:05 ⁴ | 4 | 2 1 3/4 | 2 2 1/2 | 3 ³ | 3 ⁴ | 3 4 3/4 | 2:06 ⁴ | 32 | 32 ⁴ | 32 ¹ | 29 ⁴ | TBorth | GMcNair | *45 | TheBlondy | ChaudHolliday | MuscleCharm | 7 |
| Jy17 ³ | 4Wbsb 25 ft | OnSS-rs | 23000 | m | :29 | 1:00 ³ | 1:30 ¹ | 1:59 ¹ | 6 | 2 ³ | 2 1 1/2 | 3 3/4 | 4 ³ | 5 4 3/4 | 2:00 ¹ | 29 ³ | 31 ¹ | 29 ⁴ | 29 ³ | TJones | GMcNair | 15 ⁷⁰ | SueAnne | TeaLake | GamingQueen | 10 |
| Jn15 ³ | 3Wbsb 15 ft | 2yr-f-qua | 22200 | m | :28 ³ | :59 | 1:28 ⁴ | 1:58 ³ | 6 | 2 1 1/2 | o3 2 1/2 | 1 1 1/4 | 2 1 1/2 | 6 6 1/2 | 1:59 ⁴ | 28 ⁴ | 30 ³ | 29 ² | 31 | DMcNair | GMcNair | 29 ⁸⁰ | RLiza | TeaLake | Shetrolsalot | 8 |
| Jn9 ³ | 3Wbsb 12 sy ³ | 2yr-f-qua | | m | :31 ³ | 1:02 ² | 1:32 ⁴ | 2:01 ² | 3 | 1 1 1/2 | 2 1 1/2 | 2 1 1/2 | 3 2 1/2 | 3 8 1/4 | 2:03 | 31 ³ | 31 ³ | 30 ² | 30 | TreHenry | GMcNair | NB | TactiStrk | BellaBellssm | MsciChrm | |
| Jn9 ³ | 3Wbsb 12 sy ³ | 2yr-f-qua | | m | :32 | 1:06 ³ | 1:38 ⁴ | 2:07 ³ | 2 | 6 9 1/4 | o3 ³ | 3 3 1/2 | 5 5 1/4 | 5 7 1/4 | 2:09 | 33 ⁴ | 33 ² | 32 ¹ | 29 ³ | DMcNair | GMcNair | NB | KarensDream | TeaLake | ValuableMiss | |

| 5 | | 6-1 | | Keith Jones 195 A Black-White (27-0-2-2 .065) | | Tr. Keith Jones (115-7-12-13 .156) | | 2023 | | 5 0 0 0 | | 0% | | \$1,438 | | | | | | | | | | | | |
|-------------------|--------------------------|--|-------|---|------------------|---|-------------------|-------------------|-----|------------------|------------------|------------------|------------------|------------------|-------------------|-----------------|-----------------|-----------------|-----------------|--------|--------|------------------|--------------|---------------|----------------|---|
| Black | | Br f 2, Resolve-Melissas Angel-Archangel | | Maggie Jones,Barrie-Philip Newfield,Aurora,ON | | Maggie Jones,Barrie-Philip Newfield,Aurora,ON | | 2022 | | 0 0 0 0 | | 0 | | \$00 | | | | | | | | | | | | |
| Ag13 ³ | | 2GeoD 23 ft | | Prospect | | Breeder: Winbak Farm,MD | | Life | | | | | | \$1,438 | | | | | | | | | | | | |
| Jy25 ³ | 2GeoD 22 ft | Prospect | 8500 | m | :30 ² | 1:01 ⁴ | 1:32 | 2:04 ² | 5 | o42 3/4 | 44 1/2 | 44 | 54 3/4 | 5 5 1/2 | 2:05 ² | 31 | 31 ³ | 31 ³ | 31 ¹ | KJones | KJones | 8 ⁸⁵ | Sandoon | ClevelandUBet | GracefulChina | 5 |
| Jy17 ³ | 3Wbsb 25 ft | OnSS-rs | 8700 | m | :31 ³ | 1:04 ² | 1:36 ² | 2:05 ⁴ | 5 | 6 9 1/2 | 6 ¹⁰ | 5 ⁶ | 5 ⁹ | 6 11 3/4 | 2:08 ¹ | 32 ² | 33 | 31 ¹ | 30 ⁴ | KJones | KJones | 26 ³⁵ | TheBlondy | ChaudHolliday | MuscleCharm | 7 |
| Jn15 ³ | 2Wbsb 15 ft | 2yr-f-qua | 8600 | m | :31 ¹ | 1:03 ³ | 1:34 ³ | 2:04 ¹ | 4 | 5 ⁷ | 5 ⁶ | o5 ⁵ | 4 ⁴ | 4 7 1/4 | 2:05 ³ | 32 ³ | 32 ¹ | 30 ⁴ | 30 | KJones | KJones | 12 ⁹⁵ | ChaudHollida | TheBlond | GracefulChin | 6 |
| Jn9 ³ | 3Wbsb 12 sy ³ | 2yr-f-qua | 22200 | m | :28 ¹ | :58 ⁴ | 1:29 ² | 1:57 ³ | 1 | 7 ¹⁶ | 7 12 1/2 | o8 ¹¹ | 8 16 1/2 | 8 24 1/4 | 2:02 ² | 31 ² | 29 ⁴ | 30 ² | 30 ⁴ | TBorth | KJones | 17 ⁹⁵ | AllOutMarin | RhythmOfLf | WestRiverRvr | 8 |
| Jn23 ³ | 3Wbsb 23 ft | 2yr-f-qua | 6500 | m | :31 | 1:03 | 1:33 ¹ | 2:02 ³ | x2x | 5 ^{dis} | 5 ^{dis} | 5 ^{dis} | 5 ^{dis} | 5 ^{dis} | 2:04 ³ | 32 ¹ | 32 ² | 30 ⁴ | 29 ¹ | TBorth | KJones | 8 ⁹⁰ | FliriDncr | StonBrk | Northernchnclr | 5 |
| Jn15 ³ | 4Wbsb 15 ft | 2yr-f-qua | | m | :31 ³ | 1:02 ² | 1:32 ⁴ | 2:01 ² | 5x | x7 ¹⁵ | 6 ²¹ | 6 ²⁰ | 6 ²⁵ | 6 ³⁵ | 2:08 ² | 34 ³ | 32 | 30 ¹ | 31 ³ | TBorth | KJones | NB | TactiStrk | BellaBellssm | MsciChrm | |

GRAND RIVER Raceway 2023 EVENTS

DAVE LANDRY

| DATE | ASG | SERIES | LEG |
|-------------------------|-----|--------------------------|-----|
| Friday, June 2 | 3FP | Prospect Series | 1B |
| Friday, June 2 | 3FT | Prospect Series | 1B |
| Monday, June 26 | 3FT | Prospect Series | 2B |
| Wednesday, July 26 | 2CP | Prospect Series | 2 |
| Wednesday, July 26 | 2FP | Prospect Series | 2 |
| Wednesday, August 2 | 3CP | Prospect Series | 3 |
| Friday, August 4 | 3CT | Prospect Series | 3 |
| Monday, August 7 | 3FP | Gold Leg | 3 |
| Monday, August 14 | 3CT | Gold Leg | 3 |
| Wednesday, August 16 | 3FP | Prospect Series | 4A |
| Friday, August 18 | 2CP | Grassroots Series | 3 |
| Monday, August 21 | 2CT | Prospect Series | 3B |
| Monday, August 21 | 2FT | Prospect Series | 4A |
| Monday, August 28 | 2FT | Prospect Series | 4B |
| Wednesday, August 30 | 2FP | Prospect Series | 4B |
| Friday, September 1 | 2CT | Grassroots Series | 4 |
| Wednesday, September 6 | 2CP | Prospect Series | 5A |
| Wednesday, September 6 | 2FP | Prospect Series | 5A |
| Monday, September 11 | 2FT | Grassroots Series | 5 |
| Wednesday, September 13 | 2CP | Prospect Series | 5B |
| Friday, September 15 | 3FP | Prospect Series | 5 |
| Wednesday, September 27 | ALL | Prospect FINALS | |

**PROSPECT SERIES
FINALS**
Wednesday, September 27
Grand River Raceway
Post Time 6:30 pm

**GRASSROOTS
CHAMPIONSHIPS**
Saturday, September 30
Woodbine Mohawk Park
Post Time 7:00 pm

GOLD SUPER FINALS
2YO's Friday, October 13
3YO's Saturday, October 14
Woodbine Mohawk Park
Post Time 7:00 pm



oss.ontarioracing.com



grandriverraceway.com



The OSS Program is administered by Ontario Racing

ontarioracing.com

Schedule accurate as at February 8, 2023. Please note that all dates are subject to change and it is recommended to confirm dates and post times with the track. For complete OSS information including schedules, stats, leader boards and more, please visit oss.ontarioracing.com. Complete track information may be found at ontarioracing.com

7

PACE 1 Mile Grand River Raceway 21-AUG-23

PURSE: \$6,600. FILLIES & MARES - N/W 1 RACE OR \$8,000 LIFETIME (W-ALL)

EXACTA \$0.20 TRIFECTA \$0.20 SUPERFECTA \$0.20 PICK 3 PROBABLE FAVOURITES: 2-1-6-5

WARM-UP PAD

Table 1: Race 1 results. Includes horse names (Sweet Molly), jockeys (Jason Ryan, Tr. Marie Helene Dupont), and race details (2023, 1:58 HGRvr ft 6 2 0 1 33% \$7,600).

Table 2: Race 2 results. Includes horse names (Fashion Forward), jockeys (Anthony Haughan, Tr. Meg Crone), and race details (2023, 1:56 HGRvr ft 7 2 1 1 29% \$9,442).

Table 3: Race 3 results. Includes horse names (Remissance), jockeys (Austin Sorrie, Tr. Bruce MacDonald), and race details (2023, 2:02 HGRvr ft 7 0 3 1 0% \$5,670).

Table 4: Race 4 results. Includes horse names (Autumns Passion), jockeys (Scott Coulter, Tr. Raphael Bourassa), and race details (2023 Q2:01 HGRvr ft 2 0 0 0 0% \$1,800).

Table 5: Race 5 results. Includes horse names (Matthews Rita), jockeys (Brett Macdonald, Tr. Lori LePage), and race details (2023 2:00 HGRvr ft 8 1 2 0 13% \$6,786).

Table 6: Race 6 results. Includes horse names (Jememar), jockeys (Ryan Holliday, Tr. Larry Fitzsimmons), and race details (2023 1:56 HGRvr ft 11 1 2 1 9% \$6,970).



PACE
1 Mile
Grand River Raceway
21-AUG-23

PURSE: \$6,200. HORSES & GELDINGS - N/W \$3,000 LAST 3 OR \$4,500 LAST 5 (STARTERS FOR A PURSE \$10,500 OR MORE LAST START N/E). AE: N/A \$575 P/S IN 2022-23.

DAILY DOUBLE (Races 8 & 9)
EXACTA
\$0.20 TRIFECTA
\$0.20 SUPERFECTA
PROBABLE FAVOURITES: 6-4-8-2

WARM-UP PAD

| | | | | | | | | | | | | | | | | | | | | | |
|----------|------------|---|--|--|--|--|--|--|--|------|---------------------|------|---------------------|------|------|----|---|---|---|------------|----------|
| 1 | 9-2 | Brett Macdonald 135 A Brngdy-Wh-Blk (1290-177-179-185 .262) Tr. Francis Guillemette (4477-66-51-74 .266) | | | | | | | | | | 2023 | 1:55 ² H | FimD | ft | 24 | 3 | 1 | 4 | 13% | \$26,991 |
| | | Francis Guillemette, Guelph, ON - Stephane Geoffroy, St-Jerome, QC Breeder: Jeffery E Ruch-Wallacestandardbreeds Inc, ON-William J Boden, BC | | | | | | | | | | 2022 | 1:56 ¹ H | YR | ft | 17 | 1 | 2 | 3 | 6% | \$30,880 |
| | | | | | | | | | | Life | 1:55 ² H | FimD | 4yo | 5 | wins | | | | | \$70,459 | |

| | | | | | | | | | | | | | | | | | | | | | |
|----------|------------|---|--|--|--|--|--|--|--|------|---------------------|---|-----|----|------|---|---|------------|----------|-----------|--|
| 2 | 7-2 | J Bradley Harris 155 A W-Gm-Blk (851-150-140-117 .313) | | | | | | | | | | Tr. Marielle Enberg (18-2-3-2 .240) | | | | | | | | | |
| | | Brenda Denible, Elmwood, ON Breeder: Winbak Farm, MD | | | | | | | | | | Brenda Denible, Elmwood, ON Breeder: Winbak Farm, MD | | | | | | | | | |
| | | | | | | | | | | 2023 | 1:53 ⁴ H | GRvr | ft | 14 | 2 | 4 | 2 | 14% | \$24,150 | | |
| | | | | | | | | | | 2022 | 1:52 ⁴ F | GeoD | gd | 32 | 6 | 7 | 4 | 19% | \$68,232 | | |
| | | | | | | | | | | Life | 1:52 ² H | YR | 3yo | 12 | wins | | | | | \$154,351 | |

| | | | | | | | | | | | | | | | | | | | | | |
|----------|------------|---|--|--|--|--|--|--|--|------|---------------------|---|-----|----|------|---|-----|------------|----------|-----------|--|
| 3 | 4-1 | Austin Sorrie 163 A Blue-Yellow (822-80-102-95 .204) | | | | | | | | | | Tr. Rachel Andrew (110-18-20-14 .307) | | | | | | | | | |
| | | Austin Sorrie, Freeton, ON Breeder: Brenda K Selwyn Waxman, ON | | | | | | | | | | Austin Sorrie, Freeton, ON Breeder: Brenda K Selwyn Waxman, ON | | | | | | | | | |
| | | | | | | | | | | 2023 | 1:54 | HGRvr | ft | 27 | 6 | 5 | 15% | \$32,400 | | | |
| | | | | | | | | | | 2022 | 1:52 ³ H | Chrt | ft | 19 | 6 | 1 | 2 | 32% | \$12,644 | | |
| | | | | | | | | | | Life | 1:52 ¹ H | YR | 4yo | 49 | wins | | | | | \$331,812 | |

| | | | | | | | | | | | | | | | | | | | | | |
|----------|------------|---|--|--|--|--|--|--|--|------|---------------------|--|-----|----|------|---|------------|----------|--|-----------|--|
| 4 | 5-2 | Scott Coulter 163 A Tan-Black-White (698-84-90-104 .241) | | | | | | | | | | Tr. Raphael Bourassa (164-39-30-19 .378) | | | | | | | | | |
| | | Francis Morin, Beauveville, QC Breeder: Brad D Gray, ON | | | | | | | | | | Francis Morin, Beauveville, QC Breeder: Brad D Gray, ON | | | | | | | | | |
| | | | | | | | | | | 2023 | 1:52 | FRC | ft | 29 | 3 | 7 | 10% | \$45,305 | | | |
| | | | | | | | | | | 2022 | 1:52 ³ S | Wbsb | ft | 26 | 2 | 6 | 7% | \$39,376 | | | |
| | | | | | | | | | | Life | 1:52 | FRC | 5yo | 13 | wins | | | | | \$140,751 | |

| | | | | | | | | | | | | | | | | | | | | | |
|----------|------------|--|--|--|--|--|--|--|--|------|---------------------|--|-----|----|------|---|------------|----------|--|-----------|--|
| 5 | 8-1 | Nick Boyd 175 A Green-White-Yellow (216-20-33-22 .211) | | | | | | | | | | Tr. Craig Bars (94-11-11-11 .221) | | | | | | | | | |
| | | Nurko Sokolovic, Waterloo-Craig Bars, Cobourg, ON Breeder: Nurko Sokolovic-Craig A Bars, ON | | | | | | | | | | Nurko Sokolovic, Waterloo-Craig Bars, Cobourg, ON Breeder: Nurko Sokolovic-Craig A Bars, ON | | | | | | | | | |
| | | | | | | | | | | 2023 | 1:56 ¹ H | Lon | ft | 38 | 2 | 3 | 16% | \$15,882 | | | |
| | | | | | | | | | | 2022 | 1:55 ¹ F | KD | ft | 33 | 5 | 8 | 13% | \$41,683 | | | |
| | | | | | | | | | | Life | 1:49 ¹ S | Wbsb | 8yo | 51 | wins | | | | | \$664,557 | |

| | | | | | | | | | | | | | | | | | | | | | |
|----------|------------|--|--|--|--|--|--|--|--|------|----------------------|--|-----|----|------|----|----------|------------|----------|-----------|--|
| 6 | 2-1 | Jason Ryan 170 A Green-White (908-126-117-144 .263) | | | | | | | | | | Tr. Matt Dupuis (142-19-18-22 .255) | | | | | | | | | |
| | | Matt Dupuis, Rockwood, ON Breeder: Prince Lee Acres-Douglas A Simon, ON | | | | | | | | | | Matt Dupuis, Rockwood, ON Breeder: Prince Lee Acres-Douglas A Simon, ON | | | | | | | | | |
| | | | | | | | | | | 2023 | Q1:54 ¹ S | Wbsb | ft | 22 | 3 | 8 | 2 | 14% | \$35,740 | | |
| | | | | | | | | | | 2022 | 1:53 ⁴ H | FimD | ft | 36 | 6 | 10 | 10 | 17% | \$74,233 | | |
| | | | | | | | | | | Life | 1:53 ⁴ H | FimD | 4yo | 13 | wins | | | | | \$164,852 | |

| | | | | | | | | | | | | | | | | | | | | | |
|----------|------------|---|--|--|--|--|--|--|--|------|---------------------|---|-----|----|------|---|------------|---------|--|-----------|--|
| 7 | 6-1 | Steven Hudon 175 A White-Orange-Blue (154-18-12-21 .205) | | | | | | | | | | Tr. Laura Toscani (80-14-9-11 .283) | | | | | | | | | |
| | | Laura Toscani, Mount Hope-Steven Hudon, Erin, ON Breeder: Dustin T Heinzen-Sherri Heinzen-Chad E Clark, IN | | | | | | | | | | Laura Toscani, Mount Hope-Steven Hudon, Erin, ON Breeder: Dustin T Heinzen-Sherri Heinzen-Chad E Clark, IN | | | | | | | | | |
| | | | | | | | | | | 2023 | 1:55 | HGRvr | ft | 6 | 1 | 0 | 17% | \$3,844 | | | |
| | | | | | | | | | | 2022 | | | ft | 7 | 0 | 1 | 0% | \$3,604 | | | |
| | | | | | | | | | | Life | 1:51 ³ F | ScD | 4yo | 13 | wins | | | | | \$115,413 | |

| | | | | | | | | | | | | | | | | | | | | | |
|----------|------------|--|--|--|--|--|--|--|--|------|---------------------|--|-----|----|------|---|----------|------------|----------|-----------|--|
| 8 | 3-1 | Travis Henry 170 A Light Blue-White (1120-182-165-166 .293) | | | | | | | | | | Tr. Blake MacIntosh (378-57-46-53 .265) | | | | | | | | | |
| | | Leanne Murphy, St George, ON Breeder: Leanne M Murphy, ON | | | | | | | | | | Leanne Murphy, St George, ON Breeder: Leanne M Murphy, ON | | | | | | | | | |
| | | | | | | | | | | 2023 | 1:53 ³ H | GRvr | ft | 29 | 4 | 2 | 9 | 14% | \$36,446 | | |
| | | | | | | | | | | 2022 | 1:52 ⁴ H | FimD | ft | 38 | 5 | 9 | 4 | 13% | \$42,940 | | |
| | | | | | | | | | | Life | 1:51 ² F | TgDn | 5yo | 23 | wins | | | | | \$184,507 | |

FOOD TRUCKS

Friday!



CHECK IT OUT!

Follow us on
social media

for more info on
which food trucks
will be joining us!



AT THE
EAST
GATE

Food trucks will be on site most Friday race nights.

WINBAK FARM'S 2023 Yearling Lineup



Selling at:

**Lexington (10/2-10/6), London Classic (10/17 & 10/18),
Harrisburg (11/6-11/8), & Harrisburg Mixed (11/9)**

**Ontario Pacers Sired by: Betterthancheddar, Bettor's Delight,
Jimmy Freight, McWicked, Shadow Play, Sportswriter & Stag Party**

**Ontario Trotters Sired by: Archangel, Green Manalishi S, Muscle Mass, My MVP,
Resolve, The Bank & Trixton**

Introducing Trixton's First Ontario Crop! Visit www.winbakfarm.com for 2023 Yearling Lineup!



Also, Selling Yearlings Eligible to Delaware, Indiana, New Jersey, New York, Ohio & Pennsylvania!
Jack Burke, General Manager / Jimmy Ladwig, Yearling Manager / Pat Woods, Canada Manager
410.885.3059 / james.ladwig@winbakfarm.com / [f](#) / [t](#)

WARM-UP PAD

PROBABLE FAVORITES: 6-9-1-7

Table for race 1: 5-2 ST LADS BEAT IT L. Tr. Lori LePage (73-16-7-9 .313). Includes horse names, jockeys, and performance data.

Table for race 1: Tr. Lori LePage (73-16-7-9 .313). Includes race results, odds, and payouts.

Table for race 2: 10-1 D M JOHNWICK. Scott Coulter (163 A Tan-Black-White (698-84-90-104 .241)). Includes horse names, jockeys, and performance data.

Table for race 2: Tr. Donald Lindsey (79-8-9-15 .227). Includes race results, odds, and payouts.

Table for race 3: 6-1 BETTOR B GOING. Nick Boyd (175 A Green-White-Yellow (216-20-33-22 .211)). Includes horse names, jockeys, and performance data.

Table for race 3: Tr. Wilford Perrault (22-2-4-5 .267). Includes race results, odds, and payouts.

Table for race 4: 8-1 HEZA HANDY MAN. Michael Horner (166 A Green-Black-White (194-21-22-22 .209)). Includes horse names, jockeys, and performance data.

Table for race 4: Tr. Michael Horner (130-23-12-17 .271). Includes race results, odds, and payouts.

Table for race 5: 7-1 CURIOUS CORTEX. Brett Macdonald (135 A Brngdy-Wh-Blk (1290-177-179-185 .262)). Includes horse names, jockeys, and performance data.

Table for race 5: Tr. Richard Moreau (993-170-167-141 .311). Includes race results, odds, and payouts.

Table for race 6: 8-5 LAST BEACH @. Jason Ryan (170 A Green-White (908-126-117-144 .263)). Includes horse names, jockeys, and performance data.

Table for race 6: Tr. Ben Wallace (68-6-14-6 .232). Includes race results, odds, and payouts.

Table for race 7: 4-1 SOUTHBACH HANOVER L. J Bradley Harris (155 A Wh-Gn-Blk (851-150-140-117 .313)). Includes horse names, jockeys, and performance data.

Table for race 7: Tr. Shawn Steacy (326-54-46-43 .288). Includes race results, odds, and payouts.

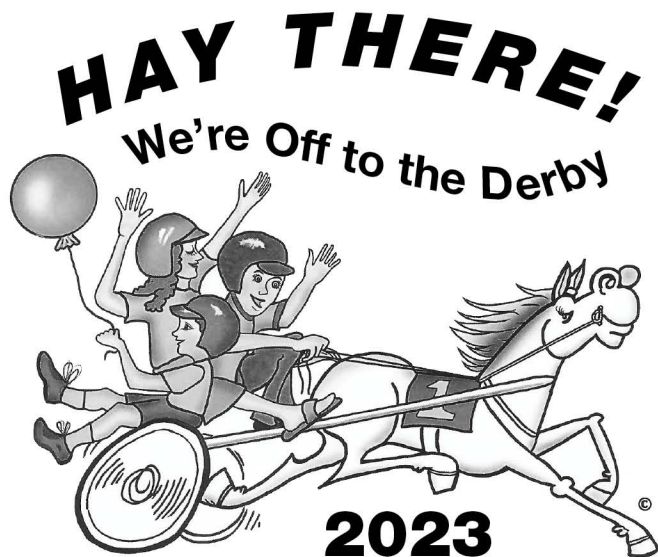
Table for race 8: 12-1 TAYLORS CREDIT. Natasha K Day (106 A Red-Blue-White (327-43-48-43 .256)). Includes horse names, jockeys, and performance data.

Table for race 8: Tr. Natasha Day (53-14-5-6 .354). Includes race results, odds, and payouts.

Table for race 9: 2-1 LOVEMYROCKINBIRD L. Colin Kelly (164 A Orange-Black-White (971-195-137-116 .319)). Includes horse names, jockeys, and performance data.

Table for race 9: Tr. Vic Puddy (527-57-76-61 .226). Includes race results, odds, and payouts.

**NEW
CONTESTS!**



Youth Photo Derby and Youth Video Derby

HORSE LOVING STUDENTS

In Grades 5-8 (*as of June 1, 2023*)

Youth Photo Derby – submit a maximum of 2 racing or non-racing photos with a Standardbred theme.

Youth Video Derby – submit a short video (maximum 3 minutes and 300 MB) with a Standardbred theme.

You could win up to \$250

Identical prizes will be awarded for each contest

1st Prize - \$250 • 2nd Prize - \$150 • 3rd Prize - \$100

Equine Guelph is also offering free tuition for Youth Courses in Horse Behaviour and Safety for contest winners

**Get your imagination racing!
Deadline is August 31, 2023**

Full details and entry form can be found on the Bill Galvin Racing Alliance website at BGRacingAlliance.ca

Follow us on Facebook 

Grand River Drivers by Wins June 2, 2023 - August 11, 2023

| DRIVERS | minimum of 14 starts | | | | MONEY | URS | WIN |
|---------------------|----------------------|-----|-----|-----|---------|-------|-----|
| | Sts | 1st | 2nd | 3rd | | | |
| Kelly Colin | 156 | 31 | 17 | 17 | 162,265 | .2956 | 20% |
| Haughan Anthony P | 144 | 28 | 15 | 8 | 146,086 | .2708 | 19% |
| Henry Travis J | 153 | 28 | 20 | 19 | 166,994 | .2970 | 18% |
| Macdonald Brett A | 208 | 23 | 33 | 33 | 182,951 | .2516 | 11% |
| Ryan Jason D | 165 | 19 | 28 | 24 | 151,266 | .2579 | 12% |
| Harris J Bradley | 137 | 18 | 19 | 20 | 124,989 | .2571 | 13% |
| Sorrie Austin | 66 | 13 | 13 | 5 | 79,336 | .3316 | 20% |
| Borth Tyler J | 81 | 11 | 11 | 16 | 112,033 | .2771 | 14% |
| Cullen Travis A | 50 | 11 | 9 | 8 | 88,527 | .3733 | 22% |
| Coulter Scott | 107 | 10 | 10 | 17 | 85,245 | .1983 | 9% |
| Thiessen Daryl | 68 | 9 | 11 | 5 | 57,040 | .2467 | 13% |
| Fillion Samuel | 73 | 8 | 4 | 16 | 56,098 | .2131 | 11% |
| Rooney Garrett L | 77 | 8 | 8 | 13 | 61,408 | .2179 | 10% |
| Baillargeon Mario J | 14 | 6 | 3 | 3 | 31,718 | .6190 | 43% |
| Moore Tyler | 57 | 6 | 3 | 4 | 35,471 | .1579 | 11% |
| Roy Louis-philippe | 15 | 6 | 3 | 1 | 46,448 | .5333 | 40% |
| Hudon Steven | 25 | 5 | 2 | 5 | 27,746 | .3111 | 20% |
| Desroche Ryan P | 55 | 4 | 5 | 7 | 30,890 | .1657 | 7% |
| Hensley Ed F | 17 | 4 | 3 | 2 | 29,346 | .3725 | 24% |
| Richardson Bruce M | 30 | 4 | 4 | 4 | 26,598 | .2519 | 13% |
| Mackenzie Paul G | 86 | 3 | 11 | 11 | 48,093 | .1486 | 3% |
| Day Natasha K | 21 | 2 | 1 | 3 | 12,211 | .1693 | 10% |
| Horner Michael A | 25 | 2 | 3 | 3 | 16,000 | .1867 | 8% |
| House Lorne S | 48 | 2 | 7 | 6 | 31,246 | .1644 | 4% |
| Mcnair Douglas R | 14 | 1 | 7 | 3 | 88,253 | .4206 | 7% |

Winning Post Positions June 2, 2023 - August 11, 2023

| | Pace | | | | | | | | |
|--------|------|------|------|------|------|------|-----|-----|-----|
| | 1 | 2 | 3 | 4 | 5 | 6 | 7 | 8 | 9 |
| Starts | 228 | 228 | 227 | 228 | 228 | 221 | 190 | 106 | 89 |
| Wins | 37 | 36 | 42 | 35 | 35 | 24 | 11 | 6 | 2 |
| Win% | 16.2 | 15.8 | 18.5 | 15.4 | 15.4 | 10.9 | 5.8 | 5.7 | 2.2 |

| | Trot | | | | | | | | |
|--------|------|------|------|------|------|------|-----|-----|-----|
| | 1 | 2 | 3 | 4 | 5 | 6 | 7 | 8 | 9 |
| Starts | 66 | 66 | 66 | 66 | 66 | 63 | 53 | 31 | 31 |
| Wins | 12 | 9 | 7 | 11 | 10 | 9 | 5 | 0 | 3 |
| Win% | 18.2 | 13.6 | 10.6 | 16.7 | 15.2 | 14.3 | 9.4 | 0.0 | 9.7 |

Grand River Trainers by Wins June 2, 2023 - August 11, 2023

| TRAINERS | minimum of 14 starts | | | | MONEY | URS | WIN |
|----------------------|----------------------|-----|-----|-----|---------|-------|-----|
| | Sts | 1st | 2nd | 3rd | | | |
| Cullen Jodie M | 46 | 13 | 6 | 6 | 71,562 | .3986 | 28% |
| Lepage Lori A | 31 | 11 | 2 | 1 | 44,540 | .4014 | 35% |
| Lester Brett M | 45 | 11 | 9 | 10 | 56,584 | .4296 | 24% |
| Roberts Jacob | 30 | 10 | 6 | 2 | 55,206 | .4667 | 33% |
| Beaton Anthony B | 36 | 7 | 7 | 2 | 82,584 | .3210 | 19% |
| Andrew Rachel E | 31 | 6 | 6 | 0 | 30,203 | .3011 | 19% |
| Bourassa Raphael | 16 | 6 | 2 | 4 | 21,604 | .5278 | 38% |
| Mcintosh Robert A | 24 | 6 | 4 | 3 | 231,999 | .3843 | 25% |
| Crone Meg J | 17 | 5 | 3 | 0 | 26,184 | .3922 | 29% |
| Demers Gerard | 35 | 5 | 5 | 7 | 29,352 | .2889 | 14% |
| Macintosh Blake C | 34 | 5 | 4 | 5 | 32,208 | .2614 | 15% |
| Mcgean Wayne P | 14 | 5 | 0 | 2 | 20,796 | .4048 | 36% |
| Toscani Laura | 22 | 5 | 2 | 5 | 27,186 | .3535 | 23% |
| Waxman Isaac S | 19 | 5 | 5 | 1 | 28,975 | .4269 | 26% |
| Guillemette Francis | 56 | 4 | 10 | 8 | 50,261 | .2183 | 7% |
| Haskell Kristopher D | 15 | 4 | 1 | 2 | 20,112 | .3481 | 27% |
| Macdonald Ronald A | 17 | 4 | 3 | 4 | 27,784 | .4118 | 24% |
| Moreau Richard | 32 | 4 | 7 | 5 | 33,845 | .2986 | 12% |
| Myers Tim R | 18 | 4 | 6 | 3 | 29,808 | .4630 | 22% |
| Bossence Kyle J | 40 | 3 | 3 | 1 | 86,842 | .1250 | 8% |
| Lindsey Donald | 21 | 3 | 2 | 4 | 18,847 | .2593 | 14% |
| Mcnaair R Gregg | 19 | 3 | 6 | 3 | 55,302 | .3860 | 16% |
| Mcqueen Cameron | 15 | 3 | 2 | 2 | 16,794 | .3185 | 20% |
| Schneider Cassidy | 39 | 3 | 2 | 6 | 20,816 | .1567 | 8% |
| Dupuis Matthew D | 25 | 2 | 7 | 4 | 25,408 | .2889 | 8% |

Winning Favourite June 2, 2023 - August 11, 2023

| Races | 294 |
|---------------------------------|-----------|
| Favourites or co-Favourites | 297 |
| Favourites finishing 1st | 165 55.6% |
| Favourites finishing 2nd | 62 20.9% |
| Favourites finishing 3rd | 30 10.1% |
| Favourites finishing 4th - 11th | 40 13.5% |

Winning Trips

June 2 to August 11, 2023. Includes 294 races. Table shows the position of the winner at 1/2 and 3/4 points. Percentages not indicated for 4th through 9th as not all races had full fields.

| | 1 | 2 | 3 | 4 | 5 | 6 | 7 | 8 | 9 |
|-----|------|------|------|----|----|---|---|---|---|
| 1/2 | 149 | 44 | 46 | 28 | 14 | 8 | 4 | 1 | 0 |
| % | 50.7 | 15.0 | 15.6 | | | | | | |
| 3/4 | 172 | 59 | 36 | 20 | 2 | 4 | 1 | 0 | 0 |
| % | 58.5 | 20.1 | 12.2 | | | | | | |

GRAND RIVER RACEWAY TRACK RECORDS

| PACERS | TROTTERS |
|--|--|
| Two-Year-Olds | Two-Year-Olds |
| (c) 1:52.3 - STAG PARTY (Bettors Delight-My Lady Day) | 15-Aug-2018 (c) 1:56.4 - FORBIDDEN TRADE (Kadabra-Pure Ivory) |
| (f) 1:54.2 - RIGHT ON MOLLY (Stonebridge Regal-Right On) | 07-Sep-2012 (f) 1:57.1 - ADARE CASTLE (Muscle Mass-Pacific Edge) |
| 1:54.2 - ALICORN (Bettors Delight-Mythical) | 29-Jul-2019 (g) 1:57.3 - ONLY FOR JUSTICE (Justice Hall-Intense America) |
| 1:54.2 - LOVE THAT SMILE (Sportswriter-Smileallthewayhome) | 26-Jul-2021 |
| (g) 1:52.4 - BETTERHAVEMYMONEY (Betterthancheddar-Whosluckierthanme) | 02-Aug-2021 |
| Three-Year-Olds | Three-Year-Olds |
| (c) 1:51.1 - JET AIRWAY (Jeremes Jet-Aromatic) | 04-Aug-2014 (c) 1:56.3 - SASS (Kadabra-Armbrro Equinox) |
| (f) 1:52.4 - NEON MOON (Sportswriter-Beach Of A Time) | 06-Aug-2018 (f) 1:55.0 - IMEXTRASPECIAL (Muscle Mass-I Am Special) |
| 1:52.4 - VOELZ DELIGHT (Bettors Delight-Voelz Hanover) | 02-Aug-2021 (g) 1:53.3 - HAYEK (E L Titan-Hold Her Tight) |
| (g) 1:51.4 - MACH IT SO (Mach Three-Beach Dancer) | 28-Aug-2013 |
| Aged | Aged |
| (h) 1:51.1 - IDEAL PERCEPTION (American Ideal-Southwind Siren) | 30-Jul-2021 (h) 1:55.2 - PARTYATYOURPLACE (Amigo Hall-Zorgwijk Davita) |
| (m) 1:53.0 - COUSIN MARY (CamLuck-Chianti Seelster) | 06-Aug-2018 (m) 1:54.2 - MYSTICAL STARLIGHT (Credit Winner-Miss Lovely) |
| 1:53.0 - HEAVENS SHOWGIRL A (Rock N Roll Heaven-Miss Deville) | 15-Jun-2022 (g) 1:55.1 - SEA CAN (Muscle Mass-Sos Respect) |
| (g) 1:50.4 - RARE JEWEL (Artiscape-Michelles Jewel) | 06-Aug-2007 |

Pari-mutuel wagering is conducted by:
Woodbine Entertainment Group

Racing is Conducted by:

Grand River Raceway Corporation

7445 Wellington County Rd. 21

Elora, ON • N0B 1S0

Admin: (519) 846-5455

Email: info@grandriverraceway.com

Web: www.grandriverraceway.com

Grand River Raceway Corporation

Chair G. Green
Director D. Whale
Director B. Ross
Director K. Giddy
Director I. Scott
Director D. Key

Racing Officials

Senior Judge Don Lawrence
Associate Judge Tyler Fines
Associate Judge Kelly Counsell
Associate Judge K. Giddy
Track Veterinarian P. Meyers D.V.M
Race Secretary T. O'Sullivan
Race Office C. Pattison
Starter M. Strome
Paddock Judge L. Jackson
Charter R. Cudmore
Announcer G. Guy
Photographer Tiffany Chantel Photography (519-889-1049)

Management Team

Raceway Manager C. Rozema
Vice President - Operations K. Giddy
Vice President - Finance I. Scott
Facilities Manager D. McCaig
Human Resources Manager R. Edmondson

A.G.C.O.

Chair L. Aggarwal
Vice Chair H. Reinhart
Member N. Desai
Member D. Forestall
Member D. McLarty
Member P. Stoyan
Member C. Vaccarino

AGCO ADMINISTRATION

CEO & Registrar Tom Mungham
Chief Operating Officer Dave Phillips
Director Regulatory Compliance Branch Katherine Cunningham
Director Regulatory Compliance Branch Jamie Wannamaker
Senior Manager Racing Tanya Cadeau
Manager Racing Tyler Durand
Manager Racing Keshia Kallou
Senior Manager, Veterinarian Services Adam Chambers
Manager Veterinarian Services Pamela Chesterfield

First Turn Printing

The Official Program is published each racing day by First Turn Printing
Office: 12 Dawson Road, Unit 3 Orangeville, Ontario, Canada. L9W 2W2. Telephone (519) 938-1523. © 2022 First Turn Printing. All rights reserved. Material printed herein may not be reproduced, retransmitted, or stored in any data retrieval system without the written permission of the copyright owners. Opinions expressed and information published herein are not to be construed as encouragement to wager. Every effort is made to ensure the accuracy of the information contained herein but First Turn Printing and the racing association cannot accept any responsibility for loss or inconvenience attributed to errors or omissions.

Children

Children are welcome at Grand River Raceway, but must be under adult supervision at ALL times.

Program Policy – Grand River Raceway 'live' racing programs only:

If less than 5 races have run, guests may exchange the program for another 'live' program. The actual canceled program must be presented for exchange. No refunds.

If 5 or more races have run, there will be no exchange.

General Operations

Supervision of the pari-mutuel betting and drug control services is provided by the Canadian Pari-Mutuel Agency (CPMA), a division of Agriculture Canada. All pools are calculated and distributed in accordance with these Regulations. All tickets should be held until the result of the race is declared official. No minor shall purchase or cash a pari-mutuel ticket. Approximate odds represent the probable pay-out price of the win pool at the time they are posted and have no bearing on the pay-out price for any other pool. Where approximate odds for any horse are posted as "1-9", the pay-out price based on a \$2 bet on the win pool may be as low as \$2.10. All tickets should be kept until the result of the race is declared official. No ruling made by the Judges or the Alcohol And Gaming Commission of Ontario (AGCO) with regard to distribution of purse money or the placing of horses in the order of finish, after the race has been declared official shall have any bearing on the pay-out prices or distribution of pari-mutuel pools. In the case of foreign separate pool betting, the rules of racing are those of the governing body that regulates the race.

Cancellation Policy

In the event that cancellation of races should result for any reason after four races have been run, no refunds or issuance of rain checks will be made. If a cancellation results before the completion of four races, and upon producing the day's Official Program at the seller's booth, a next day's racing program will be exchanged.

Refunds

Subject to the provisions of the Federal Regulations, all monies bet in all pools on a race are refunded in the event that the race is canceled, declared off, declared no contest or postponed beyond the racing card for which it was scheduled. Subject to the Regulations, all monies bet on a horse are refunded if the horse is a late scratch or does not receive a fair start. Where a horse that is part of an entry is a late scratch and at least one horse of that entry or mutual field starts in the race, all tickets purchased on that entry or mutual field remain valid, and the purchase price of any such ticket shall not be refunded.

Fair Start

The starter shall have control of the horses from the formation of the post parade until a start has been determined. For purpose of this rule, the determination of the start is when the horses have passed the starting point and have been released by the starter. 22.03 (h) There shall be no recall after the horses have been released by the starter. 22.03 (i) The starter shall endeavour to get all horses away in position and on gait. The starter shall only sound a recall for the following reasons: (i) A horse scores ahead of the starting gate; (ii) There is interference before the horses have reached the starting point; (iii) A horse has broken equipment, which the starter notices; (iv) A horse falls before the starting point; (v) A horse coming to the starting gate in the wrong position; (vi) A malfunction of the starting gate or in the interests of safety. 22.03 (l) If a horse has not reached the Fair Start Pole when the horses are released at the starting point by the starter, the judges shall cause the "inquiry" sign to be displayed immediately.

Breaking Rule

When a horse breaks from its gait in a race the driver shall: (a) take the horse to the outside of other horses where clearance exists and; (b) properly attempt to pull the horse to its gait; (c) lose ground while on the break. If there has been no violation of (a), (b) or (c) above, the horse shall not be set back unless a contending horse on its gait is lapped on the hind quarter of the breaking horse at the finish, however, notwithstanding the foregoing, if interference caused by another driver(s) or horse(s) has caused the horse to be on a break at the finish, the judges may, in their discretion determine not to set the horse back even if a contending horse on its gait is lapped on the hind quarter of the breaking horse at the finish. The judges may set any horse back one or more places if, in their judgment, any of the above violations have been committed, or if the horse goes on an extended break, and the driver may be penalized.

Entry or Field in an Exacta

Exacta pools on races that have an entry (1 and 1A and/or 2 and 2B) or mutual field (14f, 15f...) will not offer a wager combining both halves of the same betting interest (ie. 1-1, 2-2, field-field). If the same betting interest finishes first and second, the exactor payout will be on those horses finishing first and third.

Daily Double & Late Double Betting

Where the daily double feature is operated, the daily double is a betting transaction in which the purchaser of a ticket undertakes to select the winners of each of the two races specified for the daily double and that if the purchaser of a daily double ticket fails to pick the winner of the first half of the daily double his bet is void and that all tickets in the second half of the daily double not coupled with the declared official winner of the first half of the daily double are void no matter what circumstances might affect the programmed running of the second half of the daily double. The daily double is operated as an entirely separate pool and is not affected by wagering in other pools operated on the daily double races. Should a horse or horses (not coupled with a starter) be excused from starting in the second race of the daily double after the first race of the daily double has been declared official, holders of all daily double tickets on such horses, coupled with the winner of the daily double race, shall participate in the Consolation Double pool.

Exacta Betting

Where the exacta feature is operated, the exacta is a betting transaction in which the purchaser of a ticket undertakes to select the first two horses to finish, in the exact order of finish, in the race on which the feature is operated.

Trifecta Betting

A Trifecta bet is a betting transaction in which the purchaser of a ticket undertakes to select the first three horses representing different betting interests to finish, in the exact official order of finish, in the race on which the feature is operated.

Superfecta Betting

A Superfecta bet is a betting transaction in which the purchaser of a ticket undertakes to select the first four horses representing different betting interests to finish, in the exact official order of finish, in the race on which the feature is operated.

Super Hi-5 Betting

The Super Hi-5 wager is a betting transaction in which the purchaser of a ticket undertakes to select the first five horses representing different betting interests to finish, in the exact official order of finish, in the race on which the feature is operated. In the event no one correctly selects all five winners in order, 100 per cent of the net pool will be carried over to the next Super Hi-5 race.

Pick-3 or Pick-4 Betting

The Pick 3 & Pick 4 bets are betting transactions in which a purchaser of a ticket undertakes to select the official winners of each of three or four successive races specified for the Pick 3 & Pick 4 respectively. Winning tickets for the Pick 3 & Pick 4 are determined in the following sequence: A) winners of all legs, B) most winners, then refund. If there is a change of surface in any leg that is NOT made known to the public prior to wagering for that pool closing, that leg will pay on all runners. If there are no winners in any leg of a pool, the entire pool is refunded.

Pick 5 Betting

The Pick 5 bet is a betting transaction in which a purchaser of a ticket undertakes to select the official winners of each of five successive races specified for the Pick 5 respectively. If no one has correctly selected all 5 winners, the entire net pool is carried over to the next available PICK 5.

Pick 3, Pick 4 & Pick 5 Scratches

In the event a Pick 3, Pick 4 or Pick 5 ticket designates as a selection a horse which is scratched, excused or determined by the Stewards/Judges to be a non-starter in any of the races comprising the Pick 3, Pick 4 or Pick 5 the favourite, as evidenced by the amount wagered in the win pool at the time of the start of the race in which the scratch occurred, will be substituted for the non-starting selection. In the event that the money bet in the win pool for two or more favourites is identical, the selection with the lowest program number shall be substituted for the non-starting selection. However, if a scratch occurs in any leg of the Pick 3, Pick 4 or Pick 5 pools before the pool is closed, a ticket including the scratched horse may be cancelled.

Pari-Mutuel Deductions

The Association deducts and retains the following percentages from wagers placed on Grand River Raceway in Ontario which are then shared with the horsepeople. Horsepeople receive a further 2% on all wagers and an additional 2% on trifecta wagering. The Ontario Government retains .5% on all bets placed in Ontario. The Canadian Government retains .8% on all wagers placed in Canada.

Win, Place, Show: 13.65%, Exacta: 17.2%, Trifecta: 21.7%, Super: 23%; all other pools: 11.7%.

Allowances

Allowances for Ontario Sired horses at Signature tracks is 50% and are based on the condition of the class. Allowances for purse earnings at Signature tracks are 25% for fillies and mares (vs colts and geldings) and are based on the conditions of the race only.

Rule 7.15

No association shall allow a person under 18 years of age to purchase or cash a ticket. For the purposes of this rule, a "ticket" is defined as a receipt or voucher that is issued by an association for one or more bets on a race or races. The association shall ensure that signs are clearly posted in all areas, or in application forms, where tickets are purchased or cashed, advising the public of the age restriction.

Advance Notice Of New Bet Cancellation Options

No claim shall be considered for tickets thrown away, lost, changed, destroyed or mutilated beyond recognition. Payment of wagers will only be made upon presentation of valid parimutuel tickets. The following Bet Cancellation Policy is in effect at Grand River Raceway and the Grand River Teletheatre site.

A bet can be cancelled up until "stop betting" for the following reasons: 1) A wrong ticket (even after you have left the mutual window) e.g. wrong track; 2) A change in race surface (turf - dirt) or race distance; 3) A scratch of part of an entry (1-1A) or part of a field Self Serve Cancellation; Cancellation of Self Serve Tickets via mutual sellers (see below)

Mutuel Teller Cancellation

1) Open cancellation: ticket must be cancelled prior to stop betting of the race.

2) For tickets of \$100 or more you must write your name, address and telephone number on the back of the ticket before requesting the cancellation. You will also be required to present 1 piece of photo identification to the teller.

When your bets cannot be cancelled:

1) After a pool has been closed (ie betting has been stopped)

2) For tickets of \$100 or more, if photo ID is not presented or a full name, address and telephone number has not been legibly written on the back of the ticket

3) Under circumstances affecting the integrity of a pool or display of pari-mutuel data

4) An officer or the association refuses to cancel and refund the bet under subsection 57

Children

Children are welcome at Grand River Raceway, but must be under adult supervision at ALL Times.